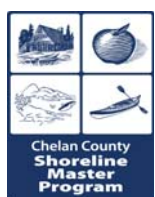




# Environment Designations

## Chelan 01



0  
|  
Feet  
1 inch equals 800 feet

August 2010  
Data: WA DNR,  
WA OFM,  
Chelan County

### CCH--Environment Designations

- Urban Conservancy
- Shoreline Residential – SF
- Shoreline Residential – MF
- High Intensity

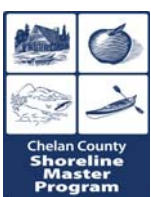
- Highways
- Railroads
- Parcels
- City Boundaries
- UGA Boundaries
- WRIA Boundaries

Shoreline jurisdiction boundaries depicted on this map are approximate. They have not been formally delineated or surveyed and are intended for planning purposes only. Additional site-specific evaluation may be needed to confirm/verify information shown on this map.



# Environment Designations

## Chelan 02



0  
|  
Feet  
1 inch equals 800 feet

August 2010  
Data: WA DNR,  
WA OFM,  
Chelan County

### CCH--Environment Designations

- Urban Conservancy
- Shoreline Residential – SF
- Shoreline Residential – MF
- High Intensity

- Highways
- Railroads
- Parcels
- City Boundaries
- UGA Boundaries
- WRIA Boundaries

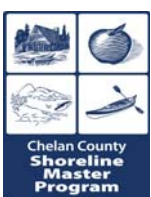
Shoreline jurisdiction boundaries depicted on this map are approximate. They have not been formally delineated or surveyed and are intended for planning purposes only. Additional site-specific evaluation may be needed to confirm/verify information shown on this map.



100' waterward = Shoreline Residential -- SF  
 100' landward = Urban Conservancy

125' landward = Shoreline Residential -- SF  
 75' waterward = Urban Conservancy

## Environment Designations Chelan 03



0  
 Feet  
 1 inch equals 800 feet

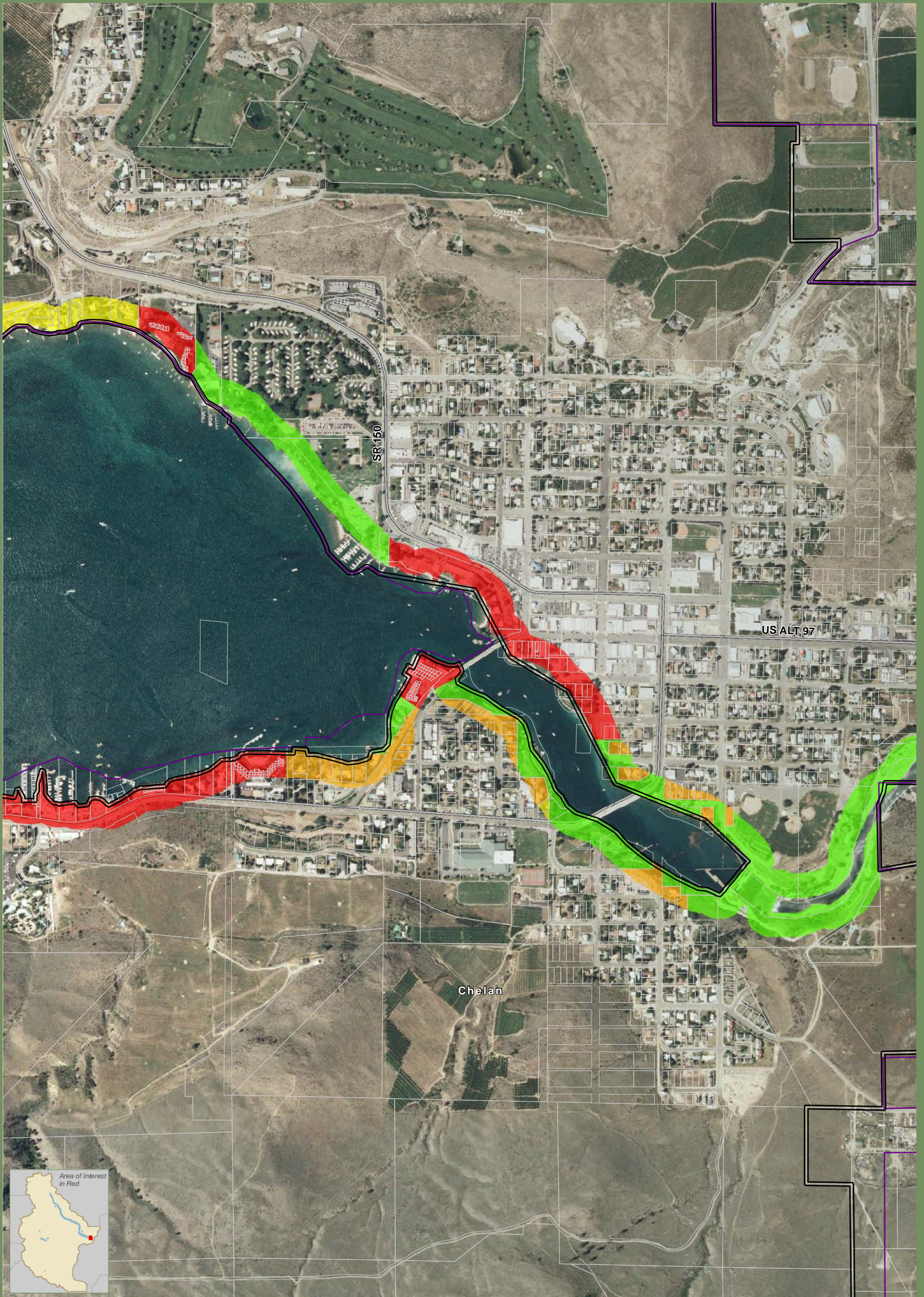
August 2010  
 Data: WA DNR,  
 WA OFM,  
 Chelan County

### CCH--Environment Designations

- Urban Conservancy
- Shoreline Residential – SF
- Shoreline Residential – MF
- High Intensity

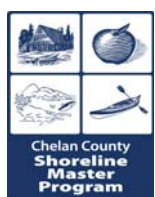
- Highways
- Railroads
- Parcels
- City Boundaries
- UGA Boundaries
- WRIA Boundaries

Shoreline jurisdiction boundaries depicted on this map are approximate. They have not been formally delineated or surveyed and are intended for planning purposes only. Additional site-specific evaluation may be needed to confirm/verify information shown on this map.



# Environment Designations

## Chelan 04



0  
|  
Feet  
1 inch equals 800 feet

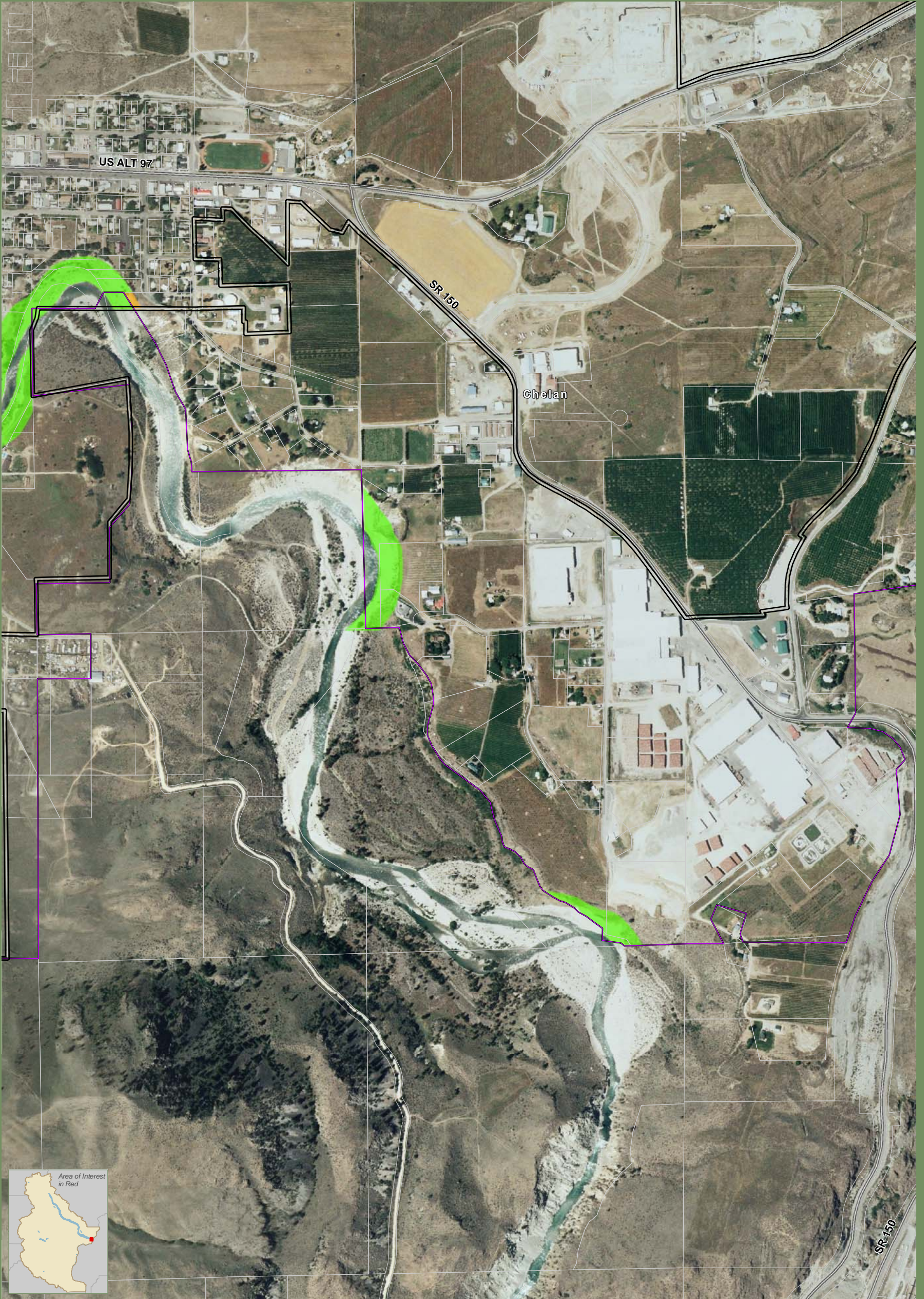
August 2010  
Data: WA DNR,  
WA OFM,  
Chelan County

### CCH--Environment Designations

- Urban Conservancy
- Shoreline Residential – SF
- Shoreline Residential – MF
- High Intensity

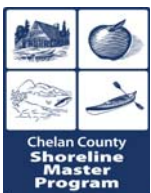
- Highways
- Railroads
- Parcels
- City Boundaries
- UGA Boundaries
- WRIA Boundaries

Shoreline jurisdiction boundaries depicted on this map are approximate. They have not been formally delineated or surveyed and are intended for planning purposes only. Additional site-specific evaluation may be needed to confirm/verify information shown on this map.



# Environment Designations

## Chelan 05



0  
Feet  
1 inch equals 800 feet

August 2010  
Data: WA DNR,  
WA OFM,  
Chelan County

### CCH--Environment Designations

- Urban Conservancy
- Shoreline Residential – SF
- Shoreline Residential – MF
- High Intensity

- Highways
- Railroads
- Parcels
- City Boundaries
- UGA Boundaries
- WRIA Boundaries

Shoreline jurisdiction boundaries depicted on this map are approximate. They have not been formally delineated or surveyed and are intended for planning purposes only. Additional site-specific evaluation may be needed to confirm/verify information shown on this map.