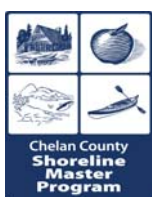


# Environment Designations

## Leavenworth 01



0  
|  
Feet  
1 inch equals 800 feet

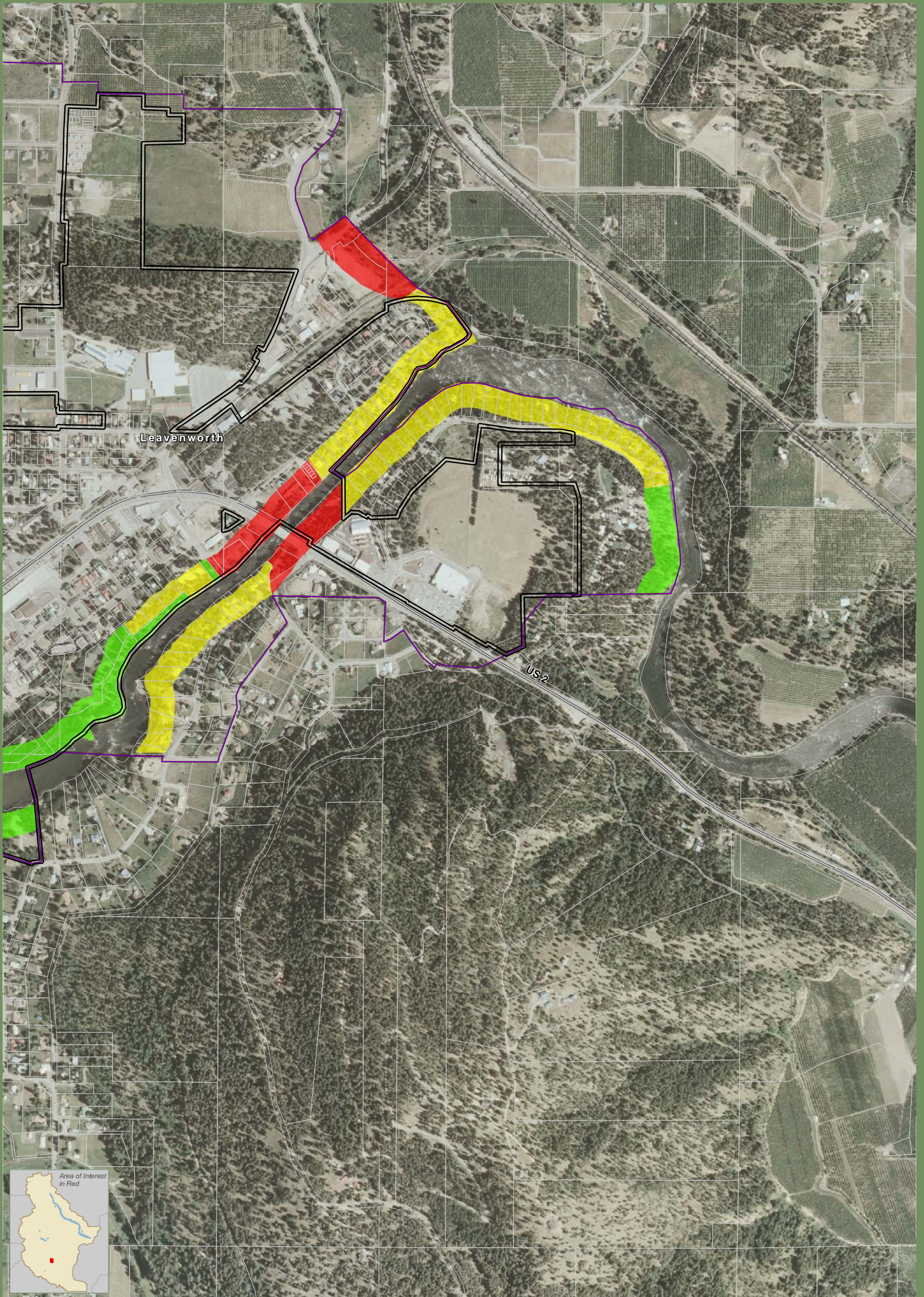
August 2010  
Data: WA DNR,  
WA OFM,  
Chelan County

### CLV--Environment Designations

- Natural
- Urban Conservancy
- Shoreline Residential
- High Intensity

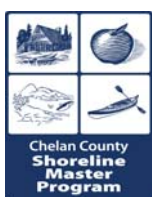
- Highways
- Railroads
- Parcels
- City Boundaries
- UGA Boundaries
- WRIA Boundaries

Shoreline jurisdiction boundaries depicted on this map are approximate. They have not been formally delineated or surveyed and are intended for planning purposes only. Additional site-specific evaluation may be needed to confirm/verify information shown on this map.



# Environment Designations

## Leavenworth 02



0  
|  
Feet  
1 inch equals 800 feet

August 2010  
Data: WA DNR,  
WA OFM,  
Chelan County

### CLV--Environment Designations

- Natural
- Urban Conservancy
- Shoreline Residential
- High Intensity

- Highways
- Railroads
- Parcels
- City Boundaries
- UGA Boundaries
- WRIA Boundaries

Shoreline jurisdiction boundaries depicted on this map are approximate. They have not been formally delineated or surveyed and are intended for planning purposes only. Additional site-specific evaluation may be needed to confirm/verify information shown on this map.