

# Entiat Shoreline Public Access Plan

---

This Entiat Shoreline Public Access Plan documents how the City has planned for parks and recreation in the community, particularly public access opportunities on the Columbia and Entiat Rivers. The plan has been prepared pursuant to WAC 173-26-221 (4)(c), including identifying specific public needs and opportunities to provide public access through an open public process. This plan is based on the City's *Comprehensive Plan* land use, economic development, capital facilities, and transportation elements, as well as a detailed *Parks, Recreation, and Open Space Plan*. The City's plans provide a variety of shoreline access opportunities and circulation for pedestrians, bicycles, and vehicles, and include recommended projects and actions.

## Shoreline Public Access Laws and Rules

Public access refers to the ability of the general public "to reach, touch, and enjoy the water's edge, to travel on the waters of the state, and to view the water and the shoreline from adjacent locations" (WAC 173-26-221(4)(a)). Public access can be physical access such as via a trail or park and/or visual such as a view corridor from a road.

Public access is a preferred use per the Shoreline Management Act (RCW 90.58.020). The Shoreline Master Program (SMP) Guidelines require that public access be provided with most new development, except that more flexibility is allowed where there is a coordinated public access planning process (WAC 173-26-221(4)(c)). When public access is addressed in a SMP, it implements the "public trust doctrine" which is a common law principle holding that "the waters of the state are a public resource owned by and available to all citizens equally for the purposes of navigation, conducting commerce, fishing, recreation and similar uses." While the doctrine "protect(s) public use of navigable water bodies below the ordinary high water mark," the doctrine "does not allow the public to trespass over privately owned uplands to access the tidelands."<sup>1</sup> Generally, public or private landowners are limited in terms of liability when there are unintentional injuries to any public access users based on state law at RCW 4.24.210.

---

<sup>1</sup> See the State of Washington's Department of Ecology's website at: [http://www.ecy.wa.gov/programs/sea/sma/laws\\_rules/public\\_trust.html](http://www.ecy.wa.gov/programs/sea/sma/laws_rules/public_trust.html). Accessed March 24, 2010.

## Shoreline Recreation Goals and Plans

The City of Entiat's 2009 *Comprehensive Plan* includes Open Space and Recreation goals that seek to improve the existing parks and recreation facilities, as well as add new ones:

- Renovation of City/PUD Park to include trail; swimming beach; fire pits; additional boat launches; and upgrades to existing camping, parking, and restroom facilities (Comprehensive Plan Land Use Goal 8)
- Develop planned Entiaqua trail and outdoor learning center on Entiat River (Comprehensive Plan Land Use Goal 9)
- Develop waterfront trail to connect with trail at PUD/City Park and cross highway to Columbia Breaks Fire Interpretive Center (Comprehensive Plan Goal 10)
- Develop green spaces and shelters in waterfront business district (Comprehensive Plan Goal 11)
- Encourage local developers and entrepreneurs to build private recreational facilities. (Comprehensive Plan Land Use Policy LU 17.2)
- Identify and encourage the preservation of sites and structures with historical or archaeological significance, particularly those that might generate tourist appeal (Comprehensive Plan Land Use Policy LU 3.3)
- Support partnerships with other public agencies and private entities which provide recreational facilities within the UGA and in the broader, surrounding area. (Comprehensive Plan Land Use Policy CF 1.15)

To implement the *Comprehensive Plan*, the City prepared a *Parks, Recreation, and Open Space Plan* in 2009. The plan identifies improvements to the Entiat City Park, along the Columbia River, new opportunities for public access and recreation on the Columbia River through the City Waterfront Master Plan, and new opportunities along the Entiat River through the Entiaqua Park Plan.

Entiat adopted a *Waterfront Subarea Plan*, to be implemented by the more detailed *Waterfront Master Plan*, as an element to its *Comprehensive Plan*. These plans that will transform Entiat's Columbia River shoreline were approved in 2009. The *Waterfront Master Plan* is focused on the following 10 design principles related to shoreline access:

- Build projects that will transform Entiat
- Provide new public amenities and attractions
- Support boating on Lake Entiat
- Ensure continuous public access along the waterfront
- Increase opportunities for recreation
- Connect established parts of town to the waterfront

- Create a walkable waterfront
- Preserve and enhance natural resources
- Preserve and enhance Entiat’s character
- Link waterfront initiatives to Entiat’s overall economic renewal

## Parks and Recreation Plans and Public Review Process

The City’s parks and recreation goals and plans have been created with extensive public review. Public participation opportunities included public open houses, meetings, hearings, and other activities. Notice was provided to a variety of agencies and citizens.

Parks Documentation and Process	Description
Comprehensive Plan	City of Entiat Comprehensive Plan, Adopted 2009, including open space and recreation goals and policies.
Parks, Recreation, and Open Space Plan	Parks, Recreation, and Open Space Plan. Adopted 2009. Plan includes planning process, existing system, goals and standards, and implementation including a capital improvement program.
Waterfront Subarea Plan Waterfront Master Plan	Waterfront Subarea Plan and Waterfront Master Plan. Both adopted in 2009. Contain detailed plans for shoreline uses and recreation along the Columbia River (Lake Entiat) waterfront.
Public Involvement Process	Open houses, news ads, public meetings and workshops, community survey, Parks Board and Planning Commission meetings, and open record public hearings.

## Current Facilities in Shoreline Jurisdiction

The following public access features are found along the Columbia and Entiat Rivers, based on the “Shoreline Inventory and Analysis Report for Shorelines in Chelan County and the Cities of Cashmere, Chelan, Entiat, Leavenworth, and Wenatchee” dated March 2009 as updated in April 2010.

Waterbody	Shoreline Acres	Parks & Open Space Acres	Trails– Existing & Proposed Feet	Visual Access	Other Shoreline Facilities
Columbia River	85.04	46	2.63	Hilltops, US 97A, or immediately along the shoreline	Entiat City Park facilities include 3 restrooms, 2 showers, 25 tent camping sites, 31 RV camping sites, and a boat launch
Entiat River	32.02	15	0.45	Along roadways paralleling the Entiat River or the hills above	Fishing access at lower Entiat River

The City’s plans described previously will transform current parks and public lands to provide additional shoreline public access opportunities.

## Community Parks and Recreation Standards

The City’s *Parks, Recreation, and Open Space Plan* includes level of service standards for different facilities community wide. These standards were considered in the development of specific parks and recreation improvements for the current and future population in Entiat.

Facility Type	Level of Service Standard
Ballfields	Four combination fields per 500 population
Trail miles	Loop trail along shoreline & connecting via irrigation right-of-way approximately 6-10 miles
Swimming Beach	One public swimming area on each river
Boat Launches	Two boat launches for local use & two Additional launches for tourism
Marina Slips	Ten marina slips per 200 population + 50-100 slips for tourism
RV Camping and Tent Camping	No standard. Current sites are not typically overbooked, but this could change with the addition of a public marina. Address through PUD relicensing.
Sport Courts	4 sport courts per 500 population
Open green space/viewing	Views from highway to river at intervals, waterside and upland broad viewing areas and open spaces needed.

## Public Access Analysis & Objectives by Shoreline Reach

The City has prepared a *Waterfront Master Plan* for the Columbia River and has partnered with agencies on the Entiaqua Park proposed along the Entiat River. Goals and policies call for a trail connecting key shoreline features, though a precise alignment has not yet been determined. The City’s plans are designed to meet the needs of current and future residential population and to attract tourists.

Public access conditions are presented in order of numbered reaches as mapped in the “Shoreline Inventory and Analysis Report for Shorelines in Chelan County and the Cities of Cashmere, Chelan, Entiat, Leavenworth, and Wenatchee” dated March 2009.

<b>Waterbody and Reach</b>	<b>Current Shoreline Facilities</b>	<b>Planned Shoreline Facilities</b>	<b>Discussion</b>
<b>Columbia River</b>			
<b>CEN 10, 9, 8, 7</b>	None	None	Area is parcelized and largely developed with single family dwellings.
<b>CEN 6</b>	Publicly owned open space	Waterfront Master Plan	Waterfront Master Plan features include a hotel and restaurant, a new street layout, a marina, parks, a waterfront trail, and street trees.
<b>CEN 5</b>	Publicly owned Parks/Open Space	Waterfront Master Plan	See above for description of Waterfront Master Plan.
<b>CEN 4</b>	Parks/Open Space	None	City owned
<b>CEN 3</b>	Parks/Open Space	None	Partly PUD owned; partly private owned residential lots.
<b>CEN 2</b>	Entiat City Park: 40 acres and over 4,000 feet of shoreline, including 3 restrooms, 2 showers, 25 tent camping sites, 31 RV camping sites, and a boat launch. Additionally, a local museum is also located near the site.	Improvements to Entiat City Park	PUD and City owned Entiat City Park: Additional docks and other improvements are planned at the park.
<b>CEN 1</b>	None	None	Road and railroad right of way.
<b>Entiat River</b>			
<b>CEN 1</b>	Open Space	Entiaqua Park	The Entiaqua trail and outdoor learning center is to be located along the Entiat River extending approximately 1/3 of a mile from its confluence with the Columbia River. Day-use and interpretive facilities are planned.
<b>CEN 2</b>	Parks/Open Space	None	PUD owned. About 0.5 miles up Entiat River Road from the Highway 97 turnoff is the Chelan County PUD Entiat River information kiosk. Parking for several vehicles is available. Two river access points are marked.
<b>CEN 3</b>	Parks/Open Space	None	PUD owned

## **Implementation**

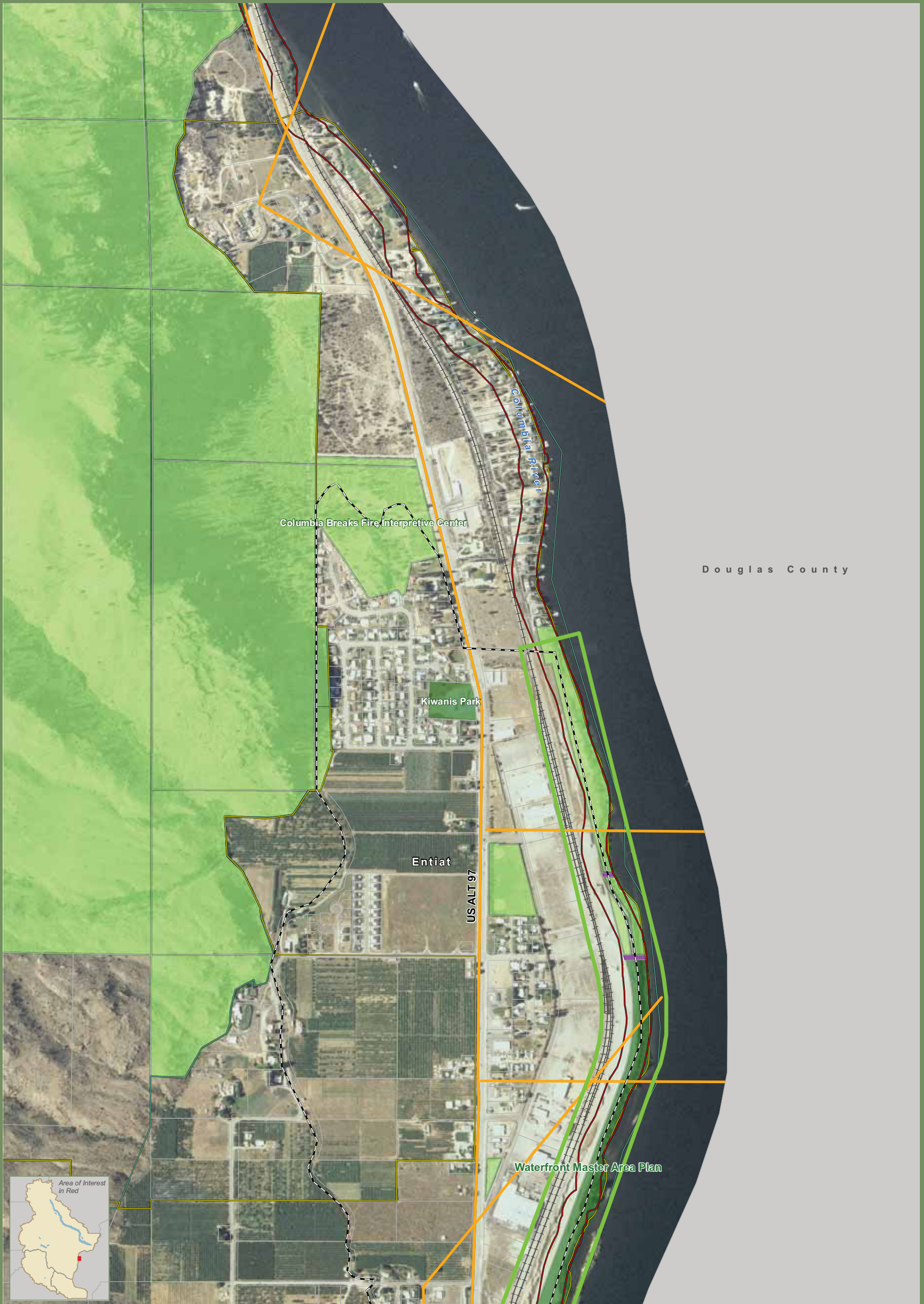
The City will implement its shoreline public access plan through a capital improvement program contained in the *Parks, Recreation, and Open Space Plan*. The capital improvement plan will be included in the City's budget in the appropriate year that the facility is to be implemented. The City anticipates this plan to be updated on or before the close of 2014. The Shoreline Master Program update also contains public access and recreation standards designed to be compatible with and support the shoreline public access plan. The City may also revisit its shoreline public access plan during periodic reviews of the SMP, anticipated every seven years. (RCW 90.58.080)

## **Supporting Maps**

The following attached maps are provided for reference and in support of the shoreline public access plan:

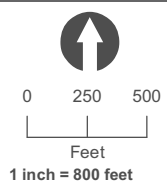
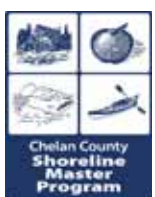
- Public Access maps prepared for the Shoreline Master Program update, July 22, 2010
- Waterfront Master Plan, Master Site Plan, 2009





Douglas County

# Public Access Entiat 01



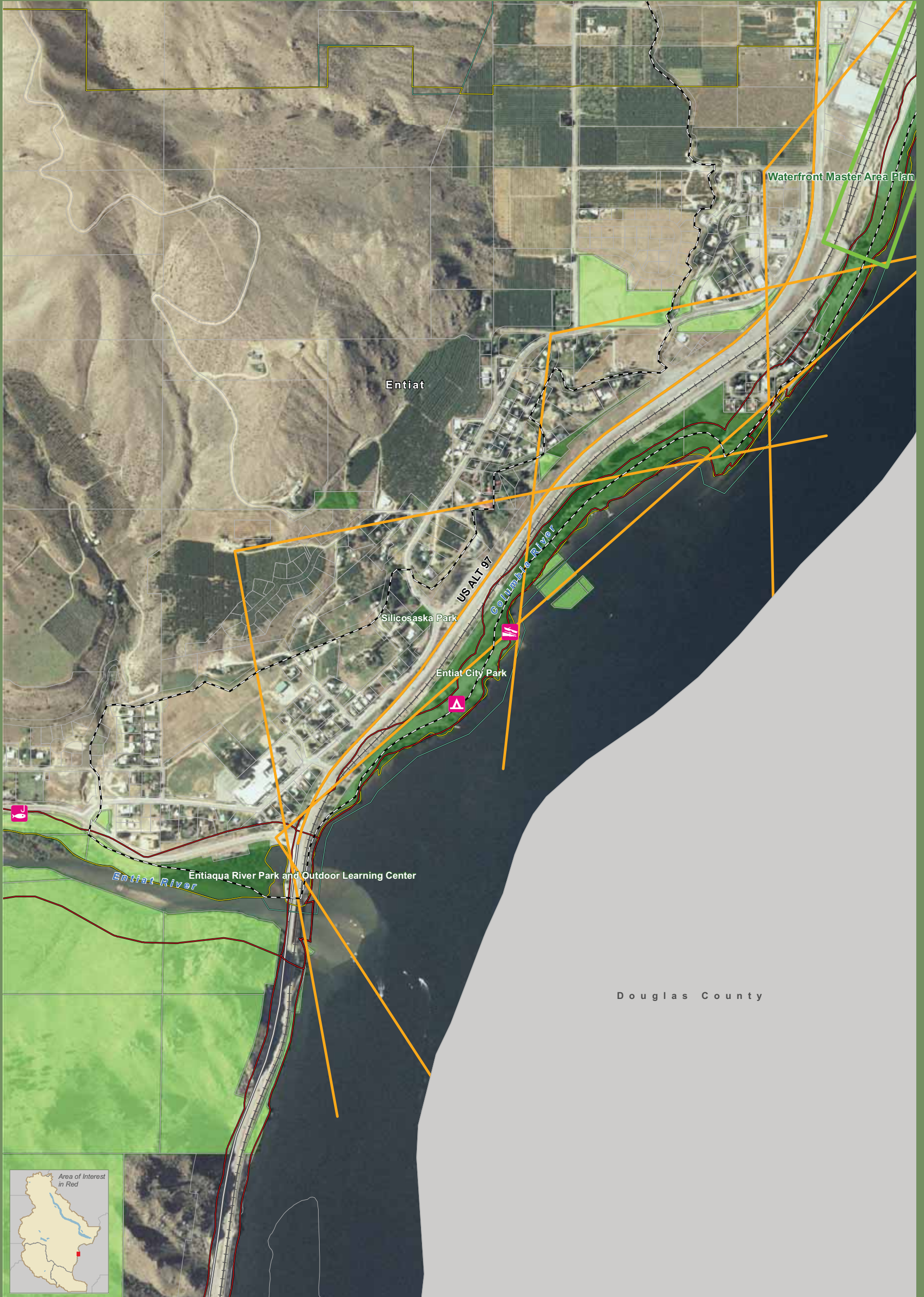
July 22, 2010  
Data: WA DOE,  
WA OFM, TPL,  
TNC, Chelan County,  
WA State Parks, WNF

## Public Access, Parks, and Other Public Lands

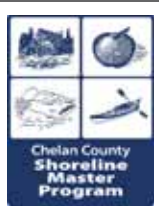
- |                        |                      |                                  |                 |
|------------------------|----------------------|----------------------------------|-----------------|
| Boat Launch            | Picnic Area          | WDFW Fishing Easements           | Hiking Trails   |
| Campground             | RV Camp              | Fishing Easement with Boatlaunch | Proposed Trails |
| Comm. Dock/Marina      | Ski Area             | Parks                            | Highways        |
| Fishing Access         | SnoPark              | Other Public and Protected Lands | Railroads       |
| Horse Camp             | Trailhead            | Potential ROW Access             | Parcels         |
| Marina                 | Visitor Info Site    | View Corridors                   | Jurisdiction    |
| Other Boating Facility | Winter Rec. Facility |                                  | City Boundaries |
|                        |                      |                                  | UGA Boundaries  |

Shoreline jurisdiction boundaries depicted on this map are approximate. They have not been formally delineated or surveyed and are intended for planning purposes only. Additional site-specific evaluation may be needed to confirm/verify information shown on this map.





# Public Access Entiat 02



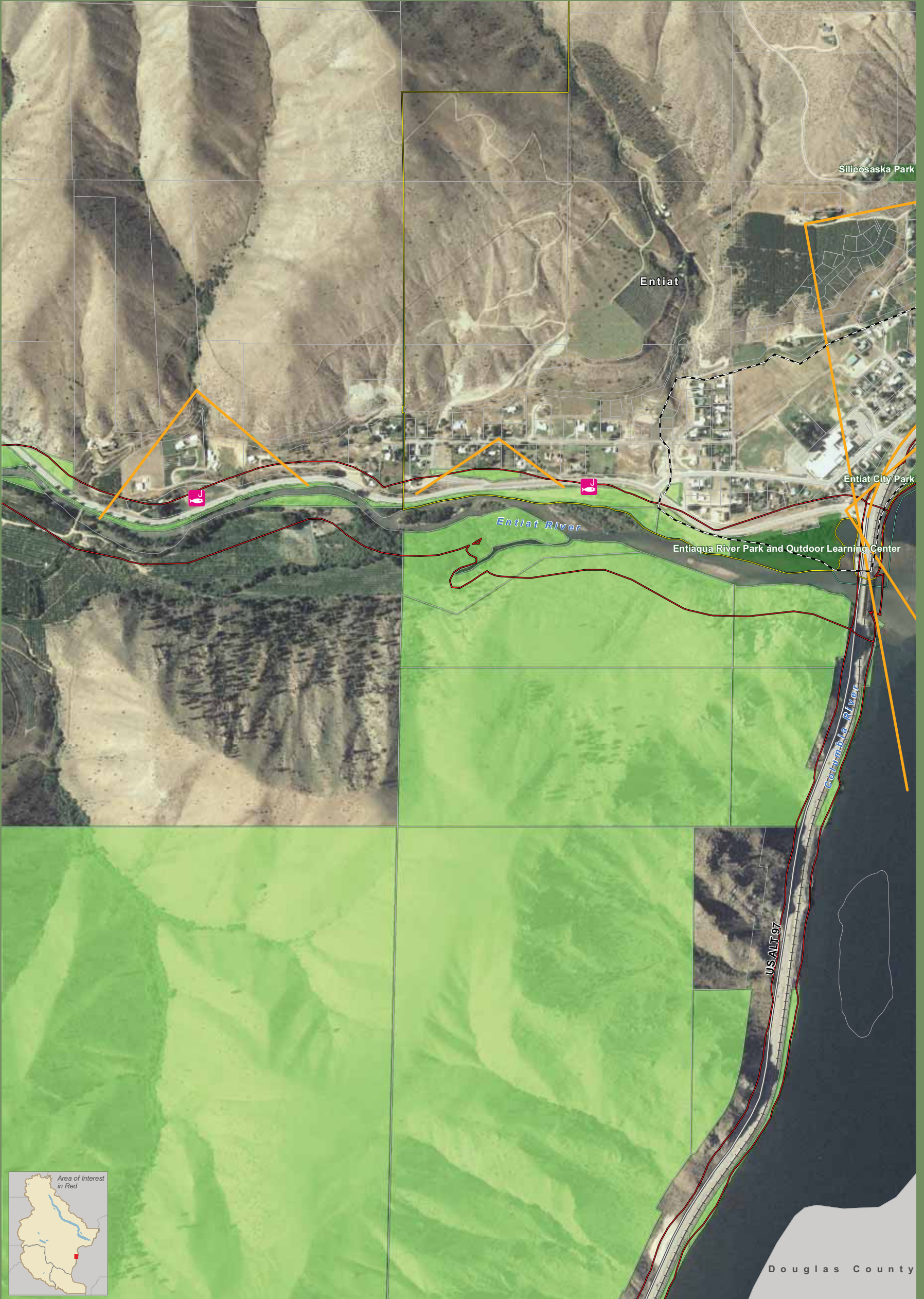
July 22, 2010  
Data: WA DOE,  
WA OFM, TPL,  
TNC, Chelan County,  
WA State Parks, WNF

## Public Access, Parks, and Other Public Lands

- |                        |                      |                                  |                 |
|------------------------|----------------------|----------------------------------|-----------------|
| Boat Launch            | Picnic Area          | WDFW Fishing Easements           | Hiking Trails   |
| Campground             | RV Camp              | Fishing Easement                 | Proposed Trails |
| Comm. Dock/Marina      | Ski Area             | Fishing Easement with Boatlaunch | Highways        |
| Fishing Access         | SnoPark              | Parks                            | Railroads       |
| Horse Camp             | Trailhead            | Other Public and Protected Lands | Parcels         |
| Marina                 | Visitor Info Site    | Potential ROW Access             | Jurisdiction    |
| Other Boating Facility | Winter Rec. Facility | View Corridors                   | City Boundaries |
|                        |                      |                                  | UGA Boundaries  |

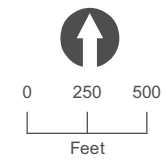
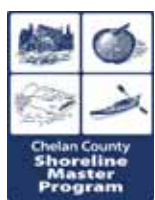
Shoreline jurisdiction boundaries depicted on this map are approximate. They have not been formally delineated or surveyed and are intended for planning purposes only. Additional site-specific evaluation may be needed to confirm/verify information shown on this map.





# Public Access

## Entiat 03



July 22, 2010  
 Data: WA DOE,  
 WA OFM, TPL,  
 TNC, Chelan County,  
 WA State Parks, WNF

### Public Access, Parks, and Other Public Lands

- |                        |                      |                                  |                 |
|------------------------|----------------------|----------------------------------|-----------------|
| Boat Launch            | Picnic Area          | <b>WDFW Fishing Easements</b>    | Hiking Trails   |
| Campground             | RV Camp              | Fishing Easement                 | Proposed Trails |
| Comm. Dock/Marina      | Ski Area             | Fishing Easement with Boatlaunch | Highways        |
| Fishing Access         | SnoPark              | Parks                            | Railroads       |
| Horse Camp             | Trailhead            | Other Public and Protected Lands | Parcels         |
| Marina                 | Visitor Info Site    | Potential ROW Access             | Jurisdiction    |
| Other Boating Facility | Winter Rec. Facility | View Corridors                   | City Boundaries |
|                        |                      |                                  | UGA Boundaries  |

Shoreline jurisdiction boundaries depicted on this map are approximate. They have not been formally delineated or surveyed and are intended for planning purposes only. Additional site-specific evaluation may be needed to confirm/verify information shown on this map.



# Master Site Plan

The Master Site Plan shows the location of the primary design elements proposed as part of the project, including buildings and property lines, street layout, the marina, parks, the waterfront trail, and street trees. The proposed hotel and restaurant are the only building uses specified in the plan. Uses for other buildings will be determined on a case-by-case basis, and will be governed by the City's form-based code (see Chapter 5).

