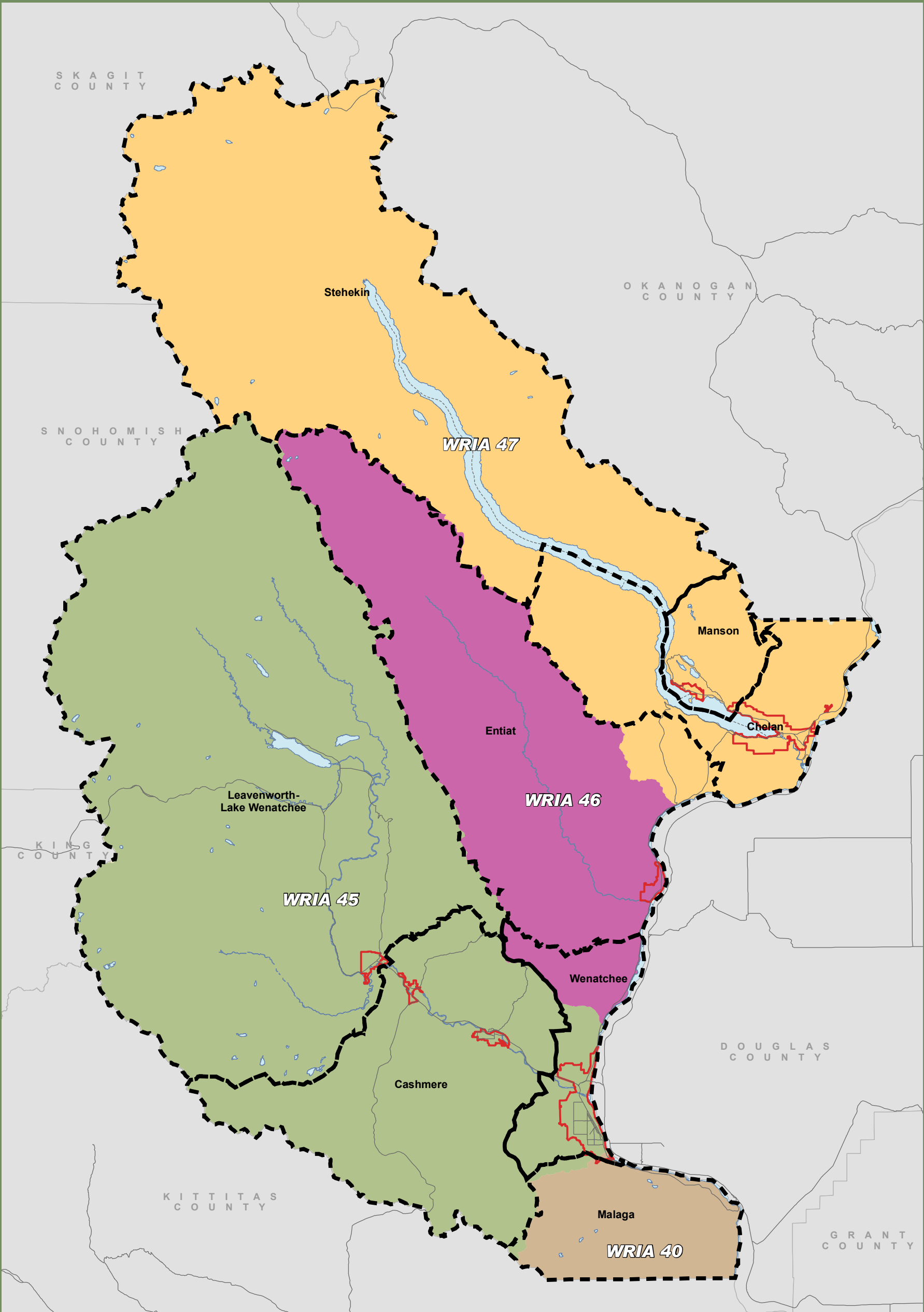
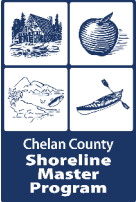


Appendix B

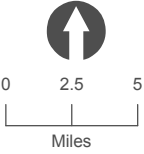
Census County Divisions and WRIA Boundaries and Population Estimates and Forecasts



2000 Census County Subdivisions and WRIA Boundaries Chelan County




Chelan County
Shoreline
Master
Program



0 2.5 5
Miles

March 2010
Data: WA DOE,
WA OFM, USGS,
TNC, Chelan County




THE
WATERSHED
COMPANY

Chelan County Shoreline Master Program

WRIA Boundaries

- 40
- 45
- 46
- 47

 UGA 101708

 Census County Subdivisions

Shoreline jurisdiction boundaries depicted on this map are approximate. They have not been formally delineated or surveyed and are intended for planning purposes only. Additional site-specific evaluation may be needed to confirm/verify information shown on this map.

Appendix B

Current and Projected Population: Chelan County Comprehensive Plan

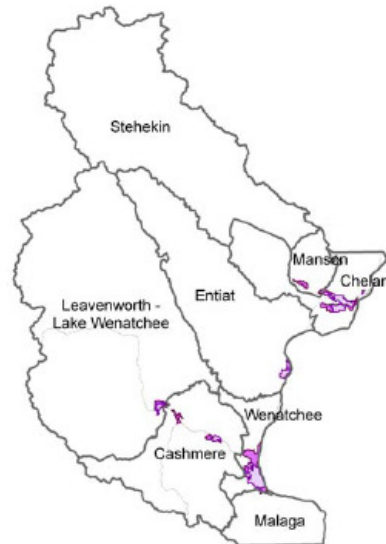
There are eight county census divisions within Chelan County. Table 4 illustrates the population growth projected within each of the county census divisions, utilizing the high series population projection from the Office of Financial Management. The Chelan County 'High Series' population number for the year 2030 was distributed to each of the eight Census County Divisions (CCDs) in Chelan County. The distribution was based on a historical trend of each CCD's percentage of the total county population. In order to give more emphasis to more recent counts, a weighted average was used. This weighted average used the following factors: 1970 Census, 10%; 1980 Census, 20%; 1990 Census, 30%; 2000 Census, 40%. This method of regional population distribution was reviewed and agreed upon by the cities and the county.

With the adoption of urban growth areas and the designation of rural and resource lands, historic growth rates within the census county divisions are intended to shift with the majority of growth being accommodated by those areas which have adequate facilities and services to accommodate the projected growth. Table 4 notes the population projection allocations by area, to the year 2030.

TABLE 4: CCD Populations

CCD Boundary	Population	
	1990 ¹	2000 ²
Cashmere	8,892	10,824
Chelan	4,949	6,222
Entiat	1,507	2,130
Leavenworth – Lk Wenatchee	4,388	5,902
Malaga	2,608	3,506
Manson	2,309	3,248
Stehekin	124	106
Wenatchee	27,473	34,678
TOTAL Countywide	52,250	66,616

¹ US Census P003; ² US CensusDP-1



The CCD's are used as the initial means of dividing County-wide population projects, as determined by the Office of Financial Management (OFM). Each CCD was assigned a percentage of the County growth then, using a ratio urban/rural split, each designated Urban Growth Area or LAMIRD was assigned a percent of the expected population. This division of growth was agreed to by the County and most cities in 2002.

Table 5 identifies the County growth from 2008 to 2030, as 35,077 people, and uses the CCD division of population growth and the urban/rural split to identify the growth throughout the County. While other CCD's only have one UGA or LAMIRD within its boundary, the Cashmere CCD divides its urban growth among three distinct areas: Cashmere, Peshastin and Monitor (see Table 6).

Appendix B

Table 5: Population Divisions Projected Growth

CCD	% of County Growth (2002 Agreement)	2008 - 2030 Population Growth of M Projections (High)	Target Split Urban/Rural %	Rural Split	Urban Split
Cashmere	16.780%	5,886	60/40	2,354	3,532
Chelan	9.404%	3,299	70/30	990	2,309
Entiat	3.060%	1,073	65/35	376	698
Leavenworth – Lake Wenatchee	8.299%	2,911	60/40	1,164	1,747
Malaga	4.674%	1,639	90/10*	574	1,066
Manson	4.495%	1,577	90/10**	158	1,419
Stehekin	0.214%	75	n/a	75	n/a
Wenatchee	53.074%	18,617	90/10	1,862	16,755
TOTAL	100.000%	35,077		7,552	27,525

* Consistent with Malaga Vision Plan projections; ** Consistent with Manson Subarea Plan 2009 (2002 agreement showed a 60/40 split)

Table 6: Current and Future Population Estimates

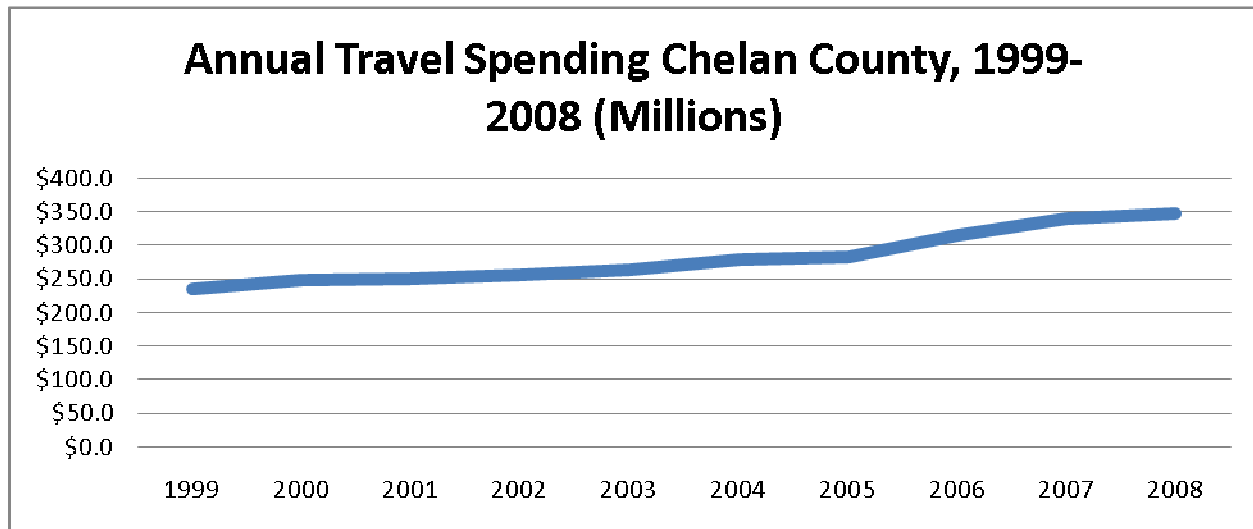
Urban Areas	Estimated Growth	2008 Estimated Population	2030 Estimated Population
Cashmere UGA	1476	2,990	4,466
Chelan UGA	2309	4,060	6,369
Entiat UGA	698	1,160	1,858
Leavenworth UGA	1747	2,295	4,042
Malaga LAMIRD	2620	2,030	4,650
Manson UGA	1419	1,685	3,104
Monitor LAMIRD*	1,573	190	1,763
Peshastin UGA	483	697	1,180
Stehekin	75	60	135
Wenatchee UGA	16,755	30,810	47,565

*2008 Population based on ACG Land Use (76 SF parcels *2.5 PPH); **Calculated annual growth rate based on Malaga Vision Plan 5.5% annually

The Stehekin Census County Division contacts no urban area therefore growth is only expected in the rural lands. The National Park Service estimated the 1995 year round population to be 70-90 persons and the seasonal population to be 175-190 persons during the peak season. In addition, the Park Service has estimated that the 2010 population for the community of Stehekin may reach 122 year round residents and up to 399 seasonal persons during the peak season. This rate of growth is higher than what the County projects and does not appear to be consistent with available land or permit applications.

Appendix B

Tourist Estimates



Source: Department of Commerce, Washington State Travel Impacts: 1991-2009

Annual Travel Spending Chelan County, 1999-2008 (Millions) and Estimated Visitors

Year	1999	2000	2001	2002	2003	2004	2005	2006	2007	2008
Millions	\$234.6	\$247.3	\$249.9	\$256.4	\$263.0	\$278.9	\$282.9	\$315.7	\$340.7	\$348.1
Visitors*	949,798	1,001,215	1,011,741	1,038,057	1,064,777	1,129,150	1,145,344	1,278,138	1,379,352	1,409,312
Annual Growth Rate		5.4%	1.1%	2.6%	2.6%	6.0%	1.4%	11.6%	7.9%	2.2%

* Derived using average person per trip 2008

Source: Department of Commerce, Washington State Travel Impacts: 1991-2009; visitor estimates, ICF

Estimated Spending and Visitors

Year	2009	2010	2015	2020	2025	2030
Millions	\$363.9	\$380.4	\$474.8	\$592.6	\$739.7	\$923.3
Visitors*	1,473,208	1,540,002	1,922,235	2,399,340	2,994,865	3,738,200
Average Annual Growth Rate	4.5%					

* Derived using average person per trip 2008

Source: Department of Commerce, Washington State Travel Impacts: 1991-2009; visitor estimates, ICF

Per Capita Spending

Average Daily Per Capita Travel Spending, Washington State: 2008

Visit Type	Person - Per Trip	Person - Per Day
Overnight	\$264	\$74
Day	\$86	\$86
Day & Overnight	\$180	\$76
Total*	\$247	\$104

* including transportation

Source: Department of Commerce, Washington State Travel Impacts: 1991-2009

Appendix B

Approximate Tourist Accommodations by Census County District

Census County Division	2010
Cashmere	362
Chelan	1,567
Entiat	153
Leavenworth-Lake Wenatchee	2,071
Malaga	-
Manson	59
Stehekin	18
Wenatchee	533
Total	4,763

Note: Tourist Accommodations includes the number of estimated rooms, campsites, RV spaces, and long-term moorage slips at hotels, motels, bed and breakfast operations, resorts, and campgrounds. These figures were compiled from chambers of commerce, agency websites, and similar sources. These are estimates only.

Annual Visitors

2005 - Chelan County PUD Parks & Recreation

Census County Division	Park	Annual Visitors
Chelan	Chelan Riverwalk	100,000
Chelan	Chelan Falls	100,000
Entiat	Entiat Park	50,000
Manson	Manson Bay Park	50,000
Manson	Old Mill Park	150,000
Wenatchee	Riverfront Park	900,000
Wenatchee	Walla Walla Pt	630,000
Wenatchee	Confluence St PK	400,000
County	Rocky Reach Dam	200,000

Source: Presentation Chelan County PUD Parks Department

Other Visitor Estimates

Locations	Annual Visitors	Sources
Cashmere	80,000	Liberty Orchards, Factory Tour
Leavenworth	1,000,000	http://www.leavenworth.org
Lake Chelan	567,000	1999 FERC Relicense Estimate

