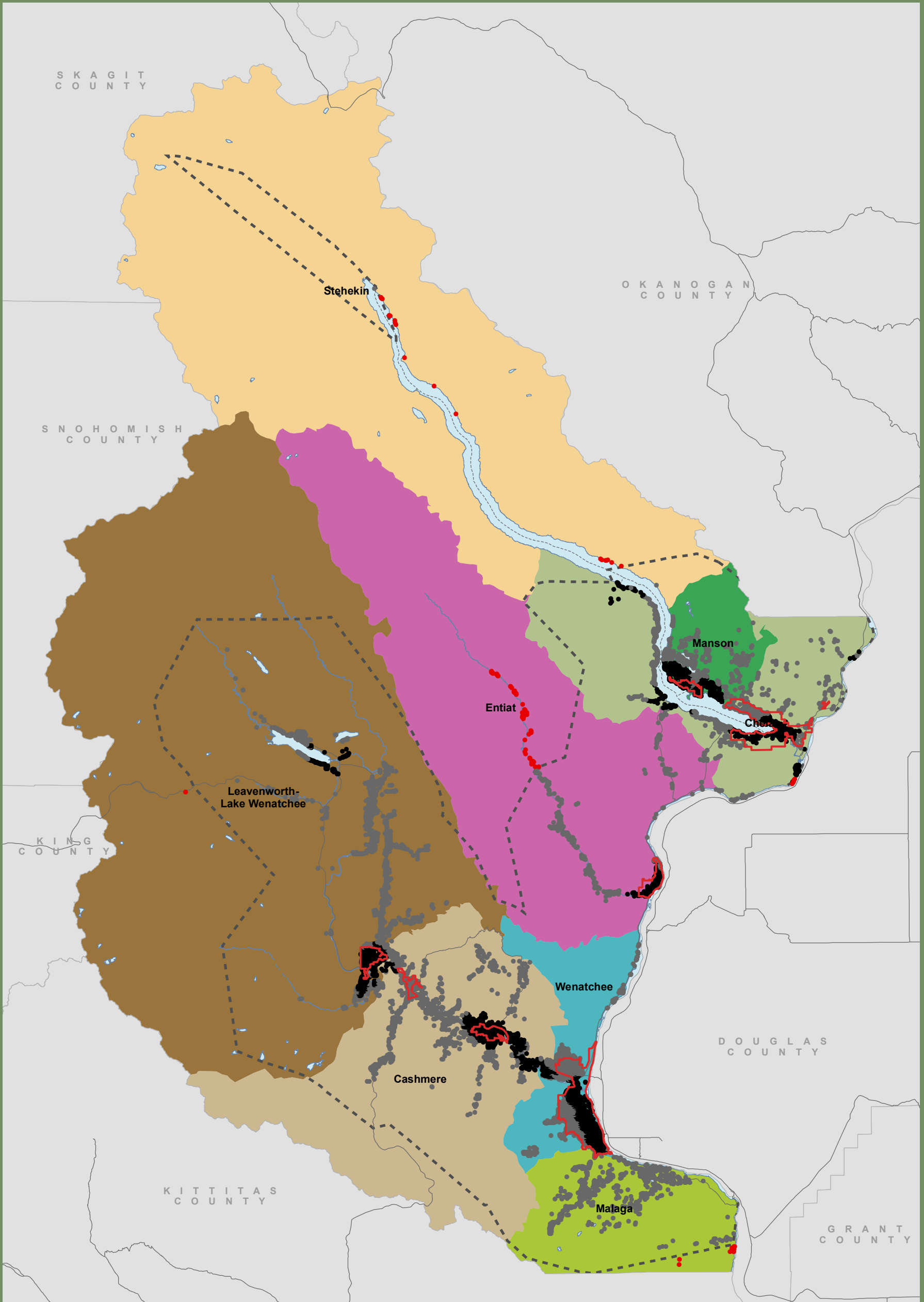


Appendix C

Distance Bands Public Access and Residences and Tourists



Distance of Residences from Park Access Chelan County Shoreline Master Program



April 2010
Data: WA DOE,
WA OFM, USGS,
TNC, Chelan County

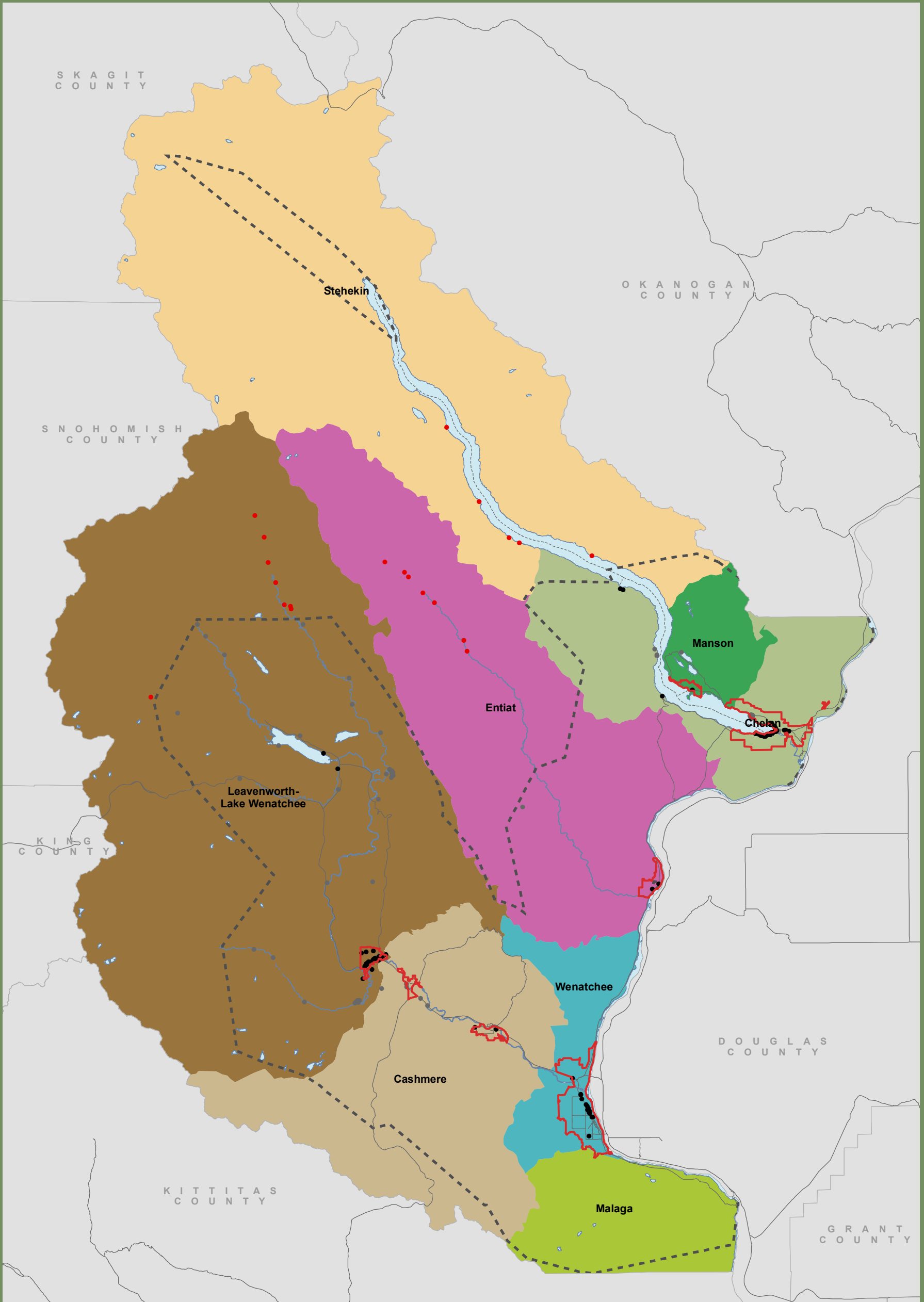
Census County Subdivisions

- Cashmere
- Chelan
- Entiat
- Leavenworth-Lk Wenatchee
- Malaga
- Manson
- Stehekin
- Wenatchee
- UGA 101708

Distance of Residences from Parks

- 1.5 miles or less
- 1.5 - 15 miles
- More than 15 miles
- Park Access 15 Mile
- Network Service Area

Shoreline jurisdiction boundaries depicted on this map are approximate. They have not been formally delineated or surveyed and are intended for planning purposes only. Additional site-specific evaluation may be needed to confirm/verify information shown on this map.



Distance of Tourist Accommodations from Park Access Chelan County Shoreline Master Program



April 2010
Data: WA DOE,
WA OFM, USGS,
TNC, Chelan County

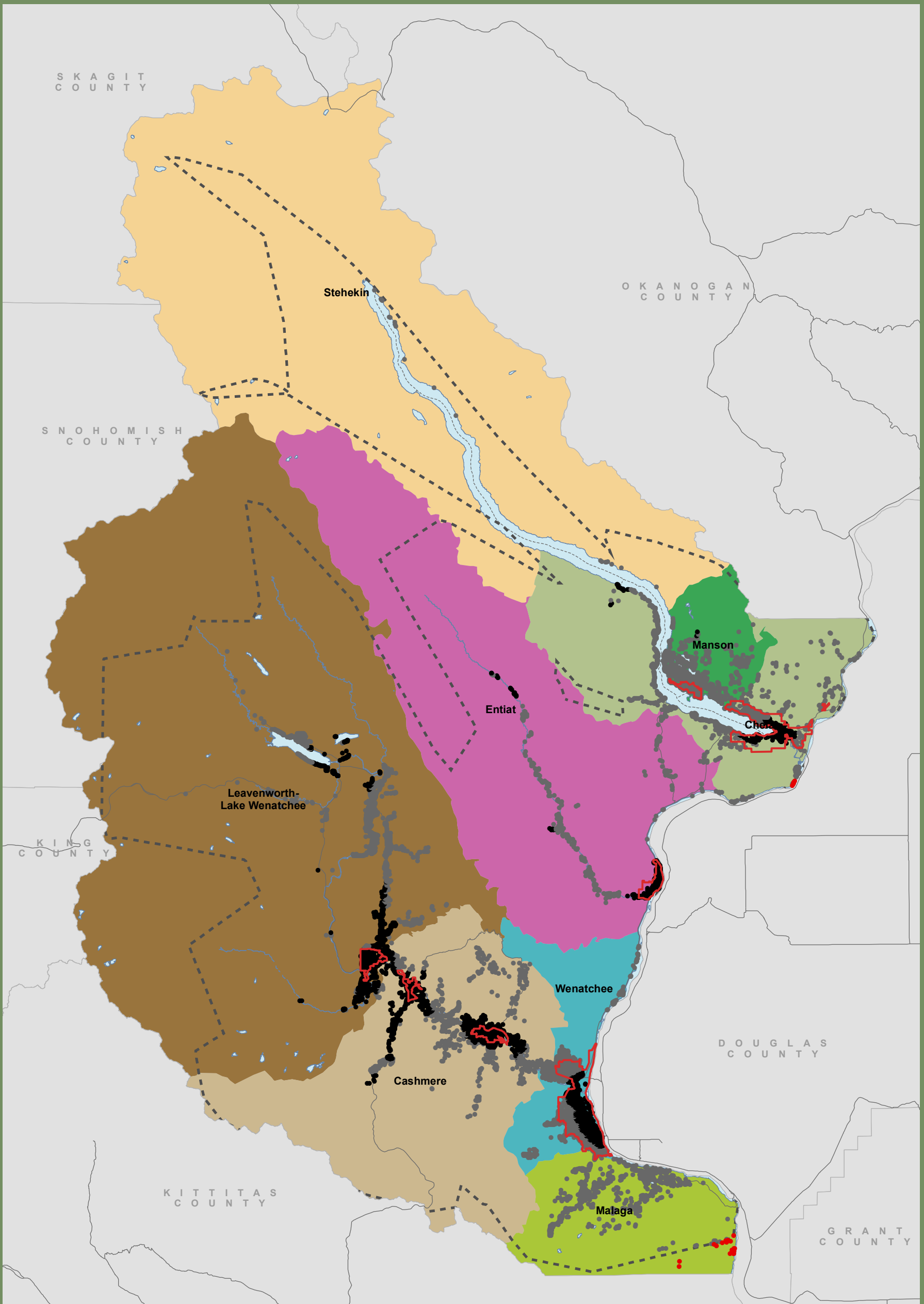
Census County Subdivisions

- Leavenworth-Lk Wenatchee
- Malaga
- Manson
- Stehekin
- Entiat
- Wenatchee
- Cashmere
- Chelan
- UGA 101708

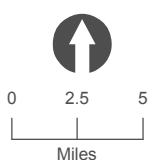
Distance of Tourist Accommodations from Park Access

- 1.5 miles or less
- 1.5 - 15 miles
- More than 15 miles
- Parks Access 15 Mile
- Network Service Area

Shoreline jurisdiction boundaries depicted on this map are approximate. They have not been formally delineated or surveyed and are intended for planning purposes only. Additional site-specific evaluation may be needed to confirm/verify information shown on this map.



Distance of Residences from Trail Access Chelan County Shoreline Master Program



April 2010
Data: WA DOE,
WA OFM, USGS,
TNC, Chelan County

Census County Subdivisions

- Cashmere
- Chelan
- Entiat

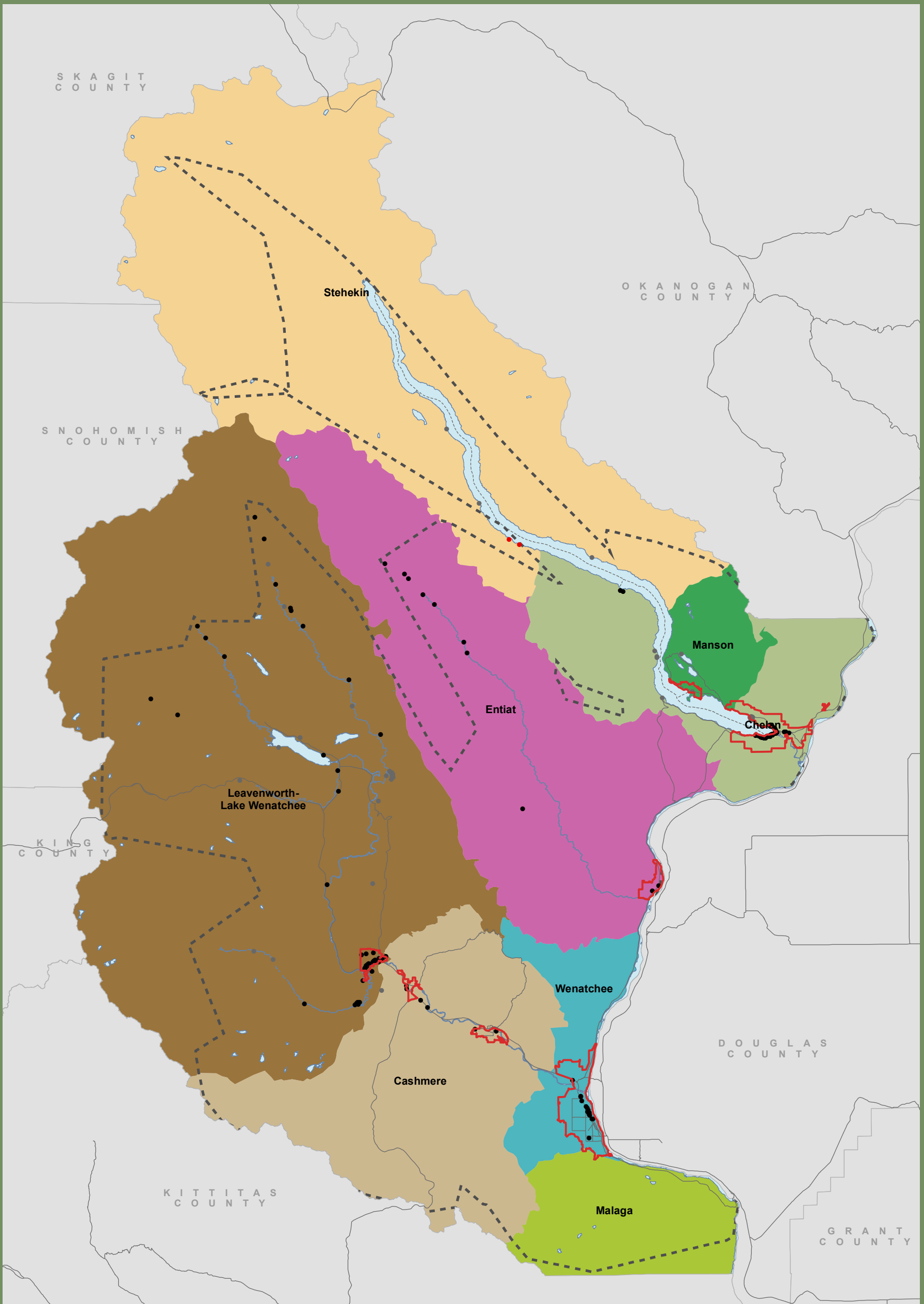
- Leavenworth-Lk Wenatchee
- Malaga

- Manson
- Stehekin
- Wenatchee
- UGA 101708

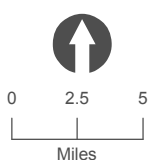
Distance of Residences from Trails Access

- 1.5 miles or less
- 1.5 - 15 miles
- More than 15 miles
- Trail Access 15 Mile
- Network Service Area

Shoreline jurisdiction boundaries depicted on this map are approximate. They have not been formally delineated or surveyed and are intended for planning purposes only. Additional site-specific evaluation may be needed to confirm/verify information shown on this map.



Distance of Tourist Accommodations from Trail Access Chelan County Shoreline Master Program



April 2010
Data: WA DOE,
WA OFM, USGS,
TNC, Chelan County

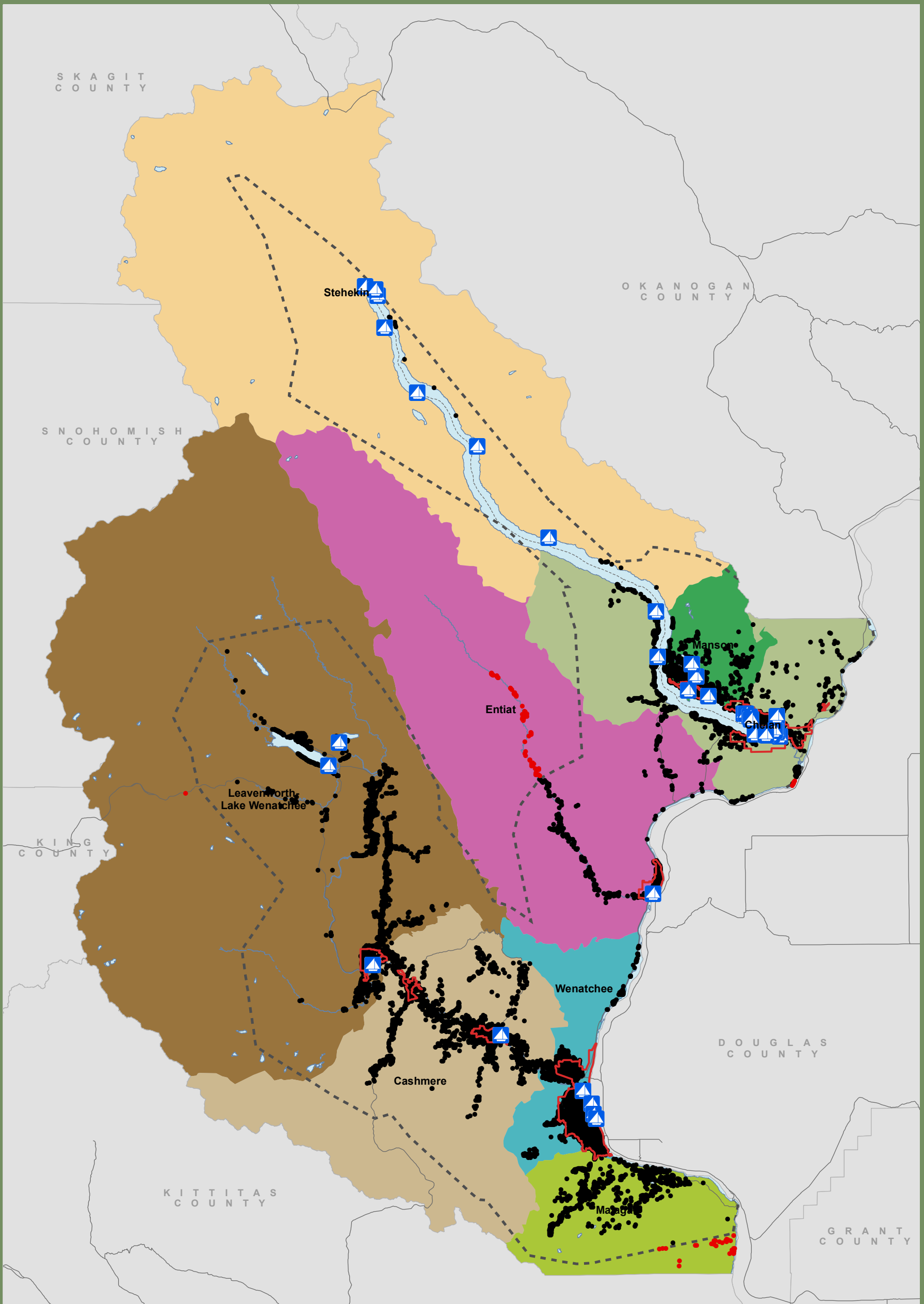
Census County Subdivisions

- Cashmere
- Chelan
- Entiat
- Leavenworth-Lk Wenatchee
- Malaga
- Manson
- Stehekin
- Wenatchee
- UGA 101708

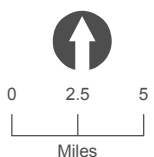
Distance of Tourist Accommodations from Trails Access

- 1.5 miles or less
- 1.5 - 15 miles
- More than 15 miles
- Trail Access 15 Mile
- Network Service Area

Shoreline jurisdiction boundaries depicted on this map are approximate. They have not been formally delineated or surveyed and are intended for planning purposes only. Additional site-specific evaluation may be needed to confirm/verify information shown on this map.



Distance of Residences from Boating Access Chelan County



April 2010
Data: WA DOE,
WA OFM, USGS,
TNC, Chelan County

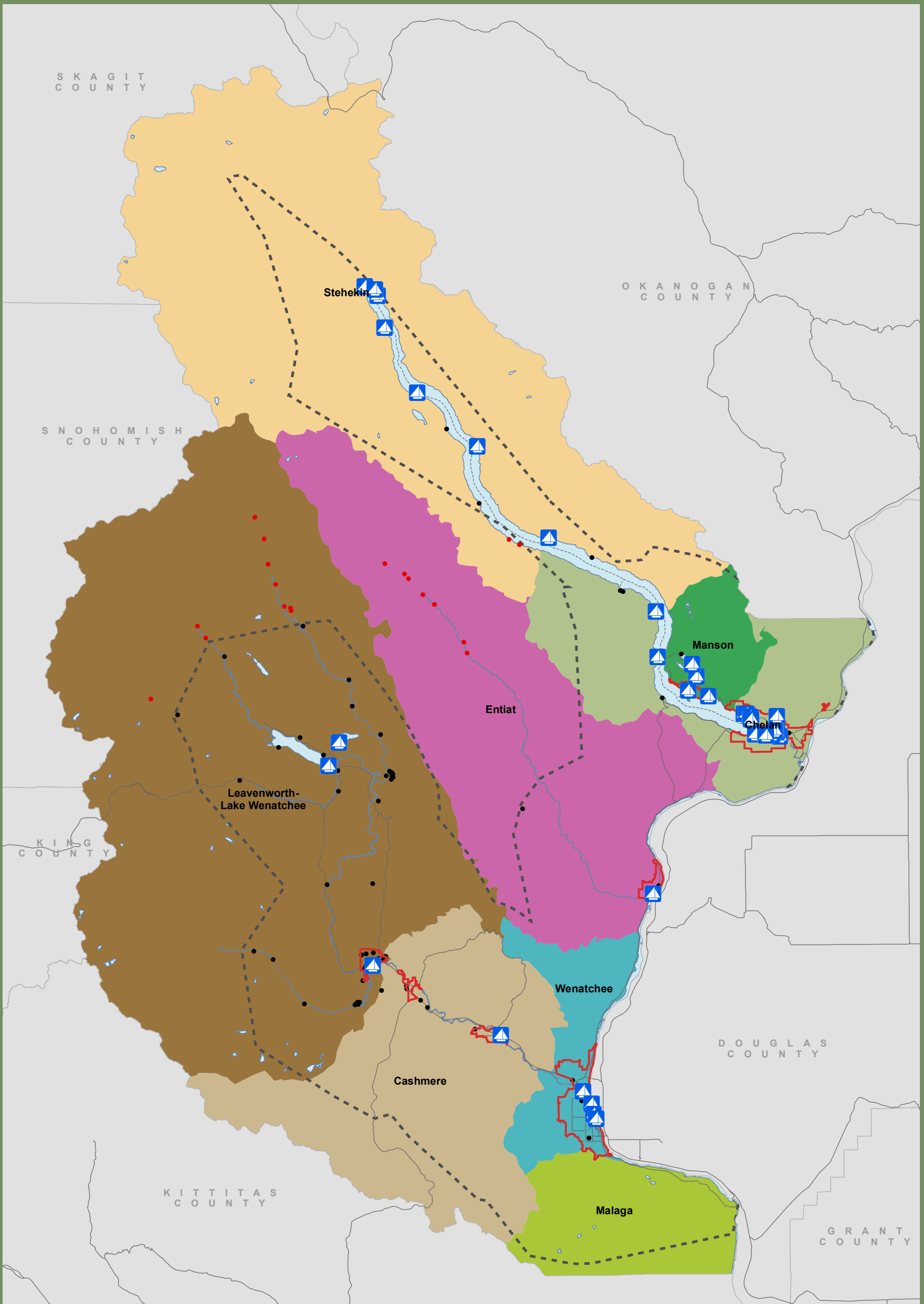
Census County Subdivisions

- Leavenworth-Lk Wenatchee
- Malaga
- Manson
- Stehekin
- Chelan
- Entiat
- Wenatchee
- UGA 101708

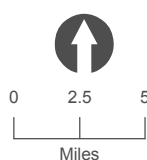
Distance of Residences from Boating Access

- 15 miles or less
- More than 15 miles
- Boating Facilities 15 Mile Network Service Area
- Boating Facilities

Shoreline jurisdiction boundaries depicted on this map are approximate. They have not been formally delineated or surveyed and are intended for planning purposes only. Additional site-specific evaluation may be needed to confirm/verify information shown on this map.



Distance of Tourist Accommodations from Boating Access Chelan County Shoreline Master Program



April 2010
Data: WA DOE,
WA OFM, USGS,
TNC, Chelan County

Census County Subdivisions

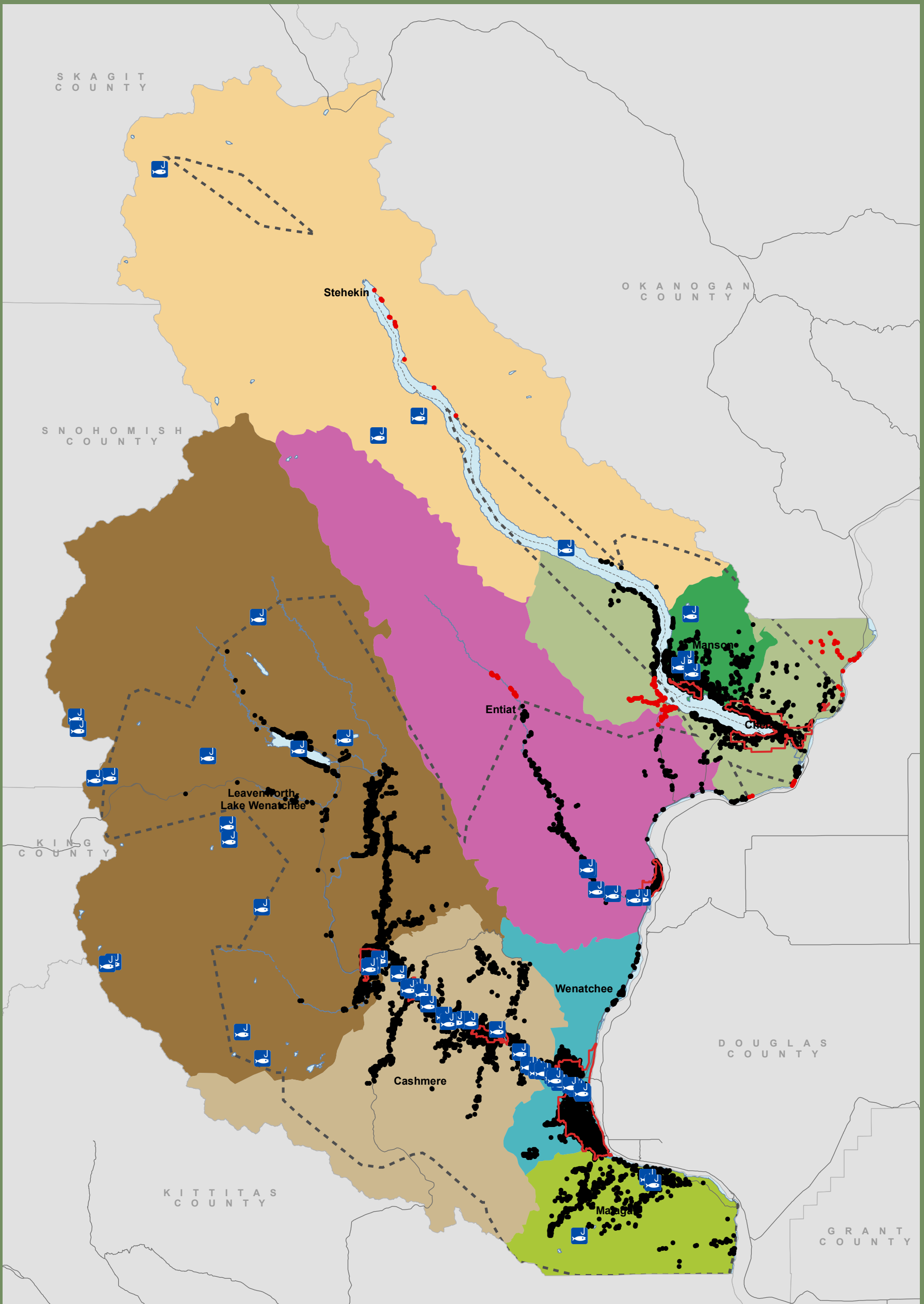
- Cashmere
- Chelan
- Entiat

- Leavenworth-Lk Wenatchee
- Malaga
- Manson
- Stehekin
- Wenatchee
- UGA 101708

Distance of Tourist Accommodations from Boating Access

- 15 miles or less
- More than 15 miles
- Boating Facilities 15 Mile Network Service Area
- Boating Facilities

Shoreline jurisdiction boundaries depicted on this map are approximate. They have not been formally delineated or surveyed and are intended for planning purposes only. Additional site-specific evaluation may be needed to confirm/verify information shown on this map.



Distance of Residences from Fishing Access Chelan County Shoreline Master Program



April 2010
Data: WA DOE,
WA OFM, USGS,
TNC, Chelan County

Census County Subdivisions

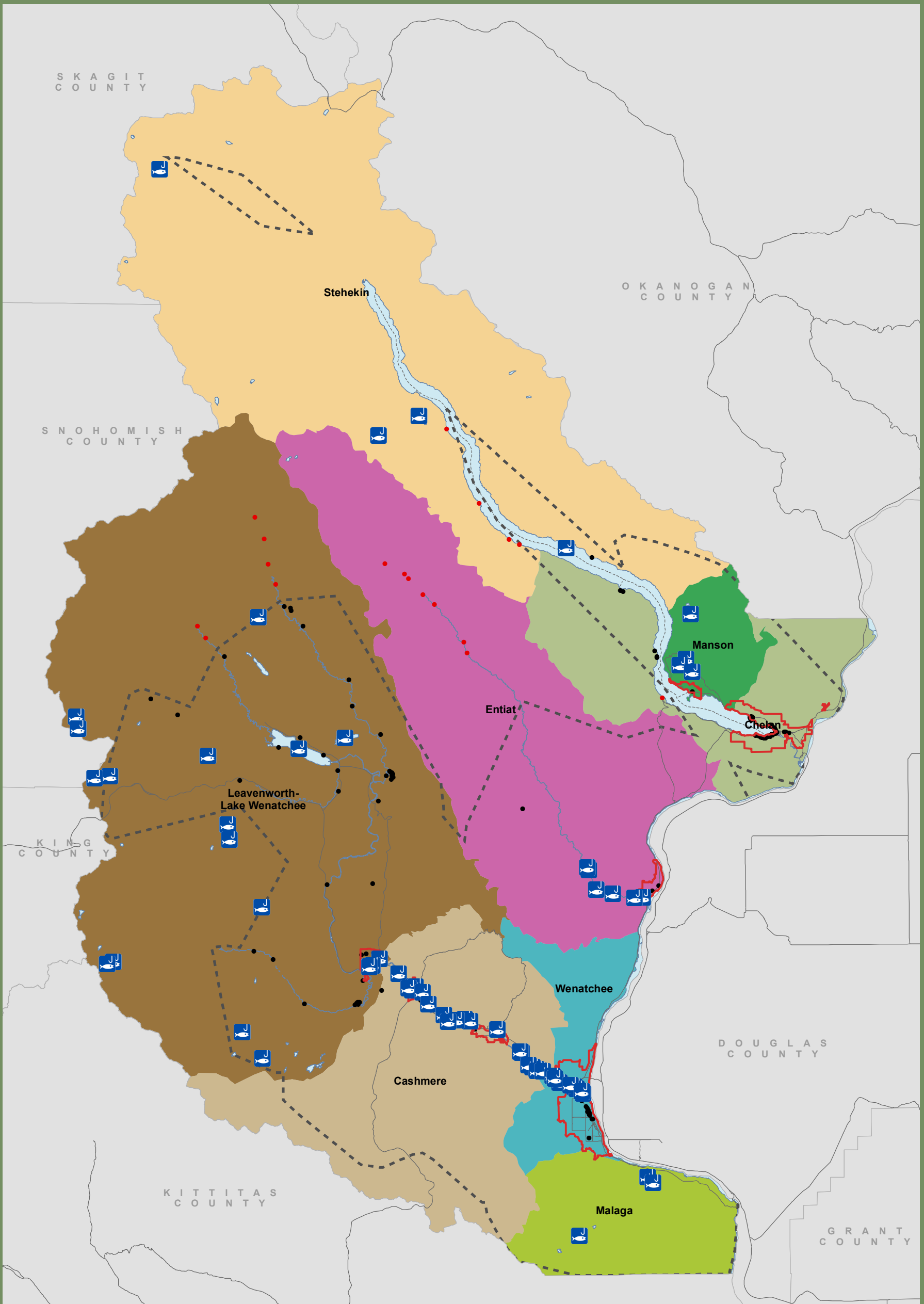
- Cashmere
- Chelan
- Entiat

- Leavenworth-Lk Wenatchee
- Malaga
- Manson
- Stehekin
- Wenatchee
- UGA 101708

Distance of Residences from Fishing Acces

- 15 miles or less
- More than 15 miles
- Fishing Access 15 Mile
- Network Service Area
- Fishing Facilities

Shoreline jurisdiction boundaries depicted on this map are approximate. They have not been formally delineated or surveyed and are intended for planning purposes only. Additional site-specific evaluation may be needed to confirm/verify information shown on this map.



Distance of Tourist Accommodations from Fishing Access Chelan County Shoreline Master Program



April 2010
Data: WA DOE,
WA OFM, USGS,
TNC, Chelan County

Census County Subdivisions

- Cashmere
- Chelan
- Entiat

- Leavenworth-Lk Wenatchee
- Malaga

- Manson
- Stehekin
- Wenatchee
- UGA 101708

Distance of Tourist Accommodations from Fishing Access

- 15 miles or less
- More than 15 miles
- Fishing Access 15 Mile Network Service Area
- Fishing Facilities

Shoreline jurisdiction boundaries depicted on this map are approximate. They have not been formally delineated or surveyed and are intended for planning purposes only. Additional site-specific evaluation may be needed to confirm/verify information shown on this map.