


SHORELINE MASTER PROGRAM UPDATE

**Public Access Planning
Chelan County**

April 22, 2010



1

SHORELINE MASTER PROGRAM UPDATE

SHORELINE MANAGEMENT ACT (SMA)
RCW 90.58
To prevent harm caused by uncoordinated and piecemeal development of the state's major shorelines.

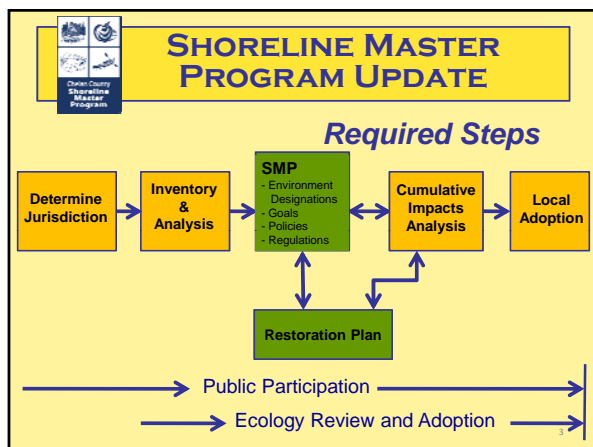
↓

Shoreline Master Program Guidelines
WAC 127-26

↓

Shoreline Master Program (SMP)
Carries out provisions of SMA
Must be approved by Dept. of Ecology,
using policy of RCW 90.58.020 and
Guidelines as approval standards/criteria

2



SHORELINE MASTER PROGRAM UPDATE

Key Principles of the Shoreline Management Act

- Encourage development of water-oriented uses
- Encourage public access to shorelines
- Encourage restoration (no net loss of ecological function)

4

SHORELINE MASTER PROGRAM UPDATE

What does shoreline public access mean?

- Ability of the general public “to reach, touch, and enjoy the water's edge, to travel on the waters of the state, and to view the water and the shoreline from adjacent locations” (WAC 173-26-221(4)(a)).
- Can be **physical access**, e.g. trail or park, and/or
- Can be **visual access**, e.g. view corridor from a road.


5

SHORELINE MASTER PROGRAM UPDATE

Why are the Cities and County preparing public access plans?

- SMP rules require that public access be provided on public lands and with most new development on a site by site basis,
- *Except* that more flexibility is allowed where there is a coordinated public access planning process (WAC 173-26-221(4)(c))

6



SHORELINE MASTER PROGRAM UPDATE

Public Access Plan Process:

- Identifies needs and opportunities
- Integrates with other community comprehensive and parks plans
- Is developed with public participation
- Results in identification of actions to be taken

7



SHORELINE MASTER PROGRAM UPDATE

Current Parks & Recreation Plans needs, opportunities, actions, public involvement

- **City Plans:**
 - City of Cashmere, Parks and Recreation Comprehensive Plan, 2009-15
 - City of Chelan, Parks and Recreation Comprehensive Plan, 2008-14
 - City of Entiat, Parks, Recreation, and Open Space Plan, 2009
 - City of Leavenworth, Parks and Recreation Comp Plan, April 1997 and Upper Valley Regional Trails Plan, June 2009
 - City of Wenatchee, Parks, Recreation & Open Space Plan 2006
- **County Plan:**
 - Comprehensive Parks and Recreation Plan 2007

8



SHORELINE MASTER PROGRAM UPDATE

Shoreline Public Access Planning

- **Cities: Prelim Shoreline Public Access Plans**
 - Summarize current plans and actions
 - Cities have planned for entire community, with some exceptions
- **County: Initial Study**
 - Still need to:
 - develop planning standards
 - determine gaps & opportunities
 - develop priorities and actions

9




SHORELINE MASTER PROGRAM UPDATE

Public Access Initial Study – Steps

- Document current & approved shoreline facilities and plans
- Review current & future resident population and tourists
- Compile example recreation standards
- Review amount and proximity of shoreline public access to population and tourists

10




SHORELINE MASTER PROGRAM UPDATE

Shoreline Public Access Maps

- Based on available information
- Address city, county, PUD, state, & federal facilities
- Include recent corrections and new information, e.g. new plans
- Show both current & planned facilities

11



SHORELINE MASTER PROGRAM UPDATE

Approximate *Shoreline* Public Access Facilities

Shoreline Jurisdiction	Current	Planned
Shoreline Jurisdiction – acres	41,683	Same
Public & Protected Lands – acres	28,955	Same
Parks – acres*	2,928	2,964
Trails – miles	101	139
Recreation facilities – number**	~150	Not estimated

*Planned acres exclude acres committed in plans, but not located yet
 **Includes the following categories: boat launch, campground, community dock/marina, fishing access, marina, other boating facility, picnic area, RV camp, snopark, trailhead, winter rec facility

12

SHORELINE MASTER PROGRAM UPDATE

Estimated Population and Tourists

	2000	2030
Resident Population	66,616	107,177**
Tourists (estimated)*	1,001,215	3,738,200

*Year 2000 estimated based on tourism expenditures and average trip costs. Future estimated based on average annual increase in expenditures between 2000 and 2010 -4.5%

**Based on Chelan County Comprehensive Plan 2009.

When broken down by Census County Division, the initial study looked at a population of 101,695, excluding 5,484 in population growth between 2000 and 2008 given lack of intercensal data. Based on CPM, it is estimated that about 70% of this growth occurred in the cities (mostly in Wenatchee) and 30% in unincorporated Chelan County.

13


SHORELINE MASTER PROGRAM UPDATE

Example Recreation Standards

- Reviewed local, state, and national guidelines or standards
- State of Washington Recreation and Conservation Office (preliminary)
 - Percentage of population within 1.5 miles of county park/trail
 - Percentage of population within 25 miles of a regional park or trail

14

SHORELINE MASTER PROGRAM UPDATE



Geography Reviewed:

County Census Districts
Similar to WRIA
Boundaries

15

SHORELINE MASTER PROGRAM UPDATE

Quantity: Public, Parks, Trails per 1,000 Population

Type of Facility	Year 2000 Acres or Miles/1,000	Year 2030 Acres or Miles/1,000
Public & Protected Lands	434.7	284.7
Parks	44.0	29.1
Trails	1.5	1.4*

*Corrected 2030 total. In initial study the number of trail miles in 2030 was misstated as 1.0

Gap Area:
•Malaga CCD – shoreline parks and trails = 0

16

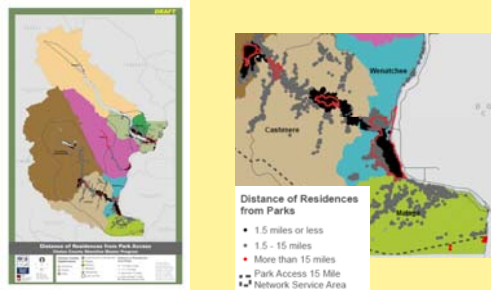
SHORELINE MASTER PROGRAM UPDATE

Proximity

- More than 90% of resident population within 15 miles of *current or planned* boating, fishing, trails, parks, and open space facilities
- Around 50% of resident population within 1.5 miles of *current or planned* parks and trails

17

SHORELINE MASTER PROGRAM UPDATE

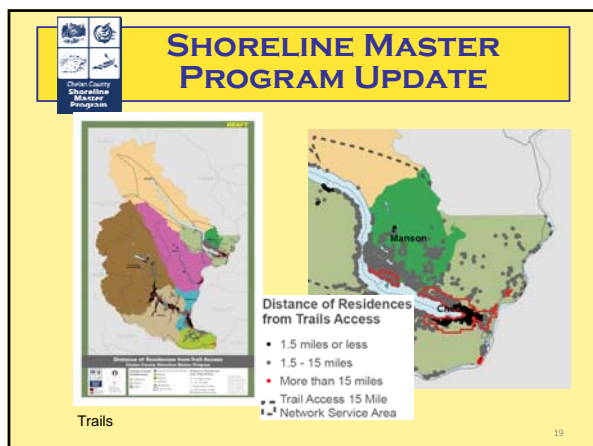


Parks

Distance of Residences from Parks

- 1.5 miles or less
- 1.5 - 15 miles
- More than 15 miles
- Park Access 15 Mile
- Network Service Area

18



19

SHORELINE MASTER PROGRAM UPDATE

Areas to review further:

- Malaga CCD – has fewer facilities, further distance
- **Parts of some CCDs have fewer facilities, further distance:**
 - Chelan UGA, northern
 - Wenatchee UGA, northern
 - Cashmere CCD, western
 - Leavenworth-Lake Wenatchee CCD, northern

20

SHORELINE MASTER PROGRAM UPDATE

What are some shoreline public access opportunities?

- Public lands:
 - Local, state, federal
 - Rights-of-way
- Land trusts
- Funding (see next slide)
- New development
- Other ideas

21

SHORELINE MASTER PROGRAM UPDATE

Grant Programs

- Washington Wildlife and Recreation Program – Outdoor Recreation Account
- Land and Water Conservation Fund
- Washington Wildlife and Recreation Program – Habitat Conservation
- National Audubon Society Together Green Innovation Grant
- NOAA/American Rivers Habitat Restoration partnership
- Partner with a local teacher and the National Environmental Education Foundation for outdoor education grants

Grants, cont. Local Funding

- Grants (cont)
 - Small Grants program at U.S. Fish & Wildlife Service, Division of Bird Habitat Conservation
- Local Taxing options
 - Conservation Futures Tax – Property Tax
 - Regular Property Taxes
 - Sales and Use Tax
 - Real Estate Excise Tax
- Other sources
 - General Obligation Bonds
 - Donations, Bequests, Gifts

22

SHORELINE MASTER PROGRAM UPDATE

Workshop/Discussion Questions

Is there enough shoreline public access?	Where are there gap areas?
What type of facilities are needed?	Where are opportunities to fill gaps?
What areas are well served by shoreline public access?	Where are the priority locations for shoreline public access?
What shoreline public access standards make sense for Chelan County?	

23

SHORELINE MASTER PROGRAM UPDATE

Next Steps

- **Use public and agency input to address gaps and develop strategies**
 - Late May, public meetings, discuss recommendations to address gaps
- **Develop public access plans and SMP policies & regulations**
 - Include in next version of draft SMP for additional public review

24