

Public Access Workshops: April 2010

Summary

Overview

As part of the Shoreline Master Program (SMP) Update, the City of Chelan and Chelan County held public workshops designed to share information about shoreline public access planning and to obtain community feedback on the following questions:

- Is there enough shoreline public access?
- What types of facilities are needed?
- What areas are well served by shoreline public access?
- What shoreline public access standards make sense for Chelan County?
- Where are there gap areas?
- Where are opportunities to fill gaps?
- Where are the priority locations for shoreline public access?

Meeting Format and Advertisements

The County and City announced two public workshops by email to a committee/stakeholders distribution list, and in the City of Chelan by 2,000 utility bill mailings. Two meetings were held on April 21 and 22, 2010. The meeting on April 21st was held at the City of Chelan Council Chambers at 6 p.m. The meeting on April 22nd was a joint public access subcommittee meeting, held at the Confluence Technology Center in Wenatchee at 9 a.m.

The meetings began with a presentation about current shoreline public access facilities and plans and an analysis of gaps. County, city staff and consultants facilitated a general question and answer session, followed by small group discussions of the key questions listed above. Participants could mark corrections and opportunities on posters.

Copies of the City of Chelan Preliminary Draft Shoreline Public Access Plan, the Chelan County Initial Public Access Study, and other City plans were distributed. A questionnaire was also distributed at the meetings as well as by email to a Shoreline Master Program committee/stakeholders distribution list as well as posted on the Lake Wenatchee Info website.

Participation included:

- Meetings: Shared initial public access study
 - 20 citizens at the Chelan meeting

- 24 subcommittee participants at the Wenatchee meeting
- Questionnaires: Distributed at meetings & by email
 - City of Chelan – 10
 - Subcommittee and General Email List – 15

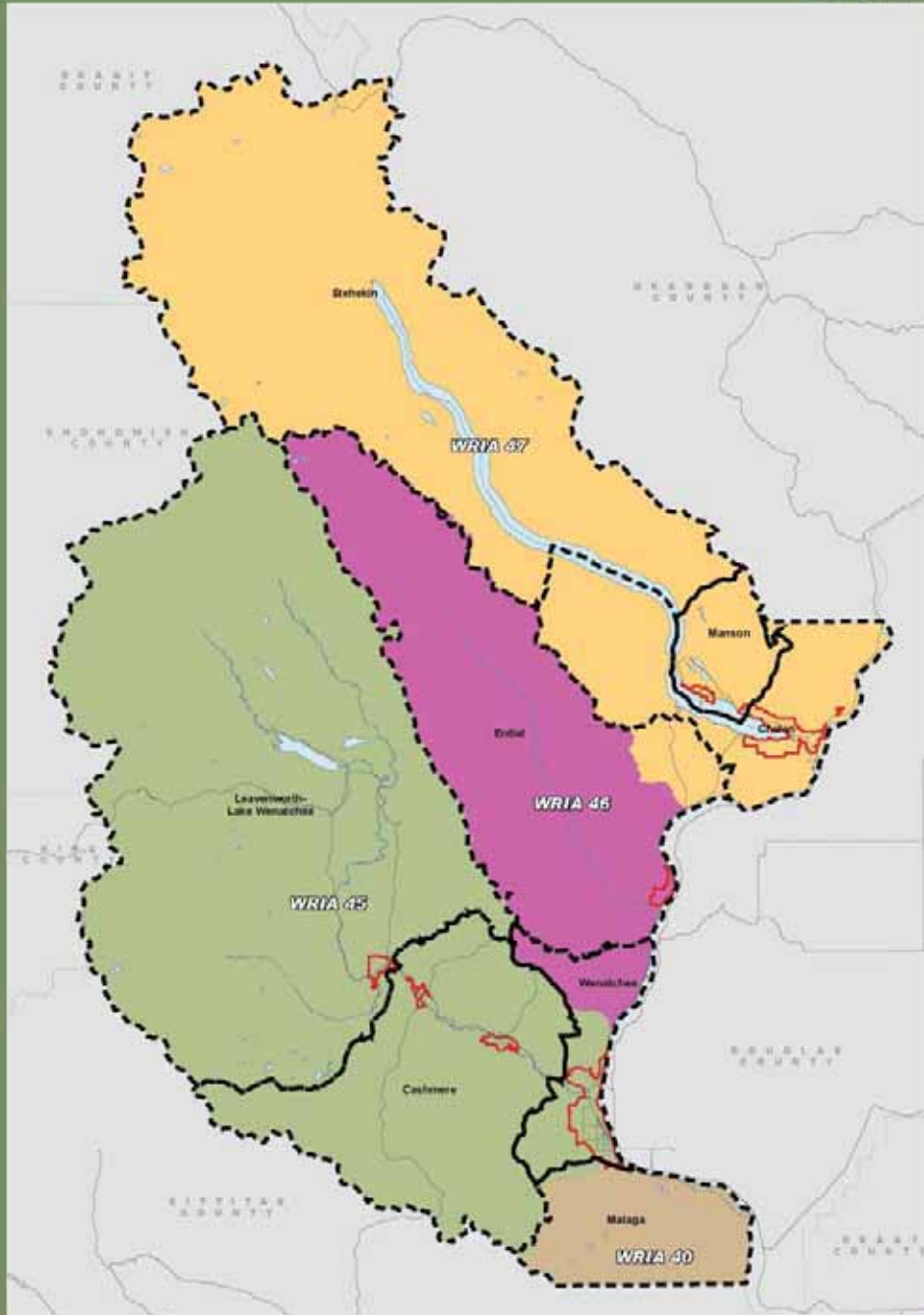
The meeting notes and maps are included in Appendix A. Questionnaire results are included in Appendix B.

Results

Results varied based on location and individual opinion. Following are potential gaps identified at the workshops and in questionnaires based on geographic locations shown on the following map:

- Lake Chelan Census County Division (CCD)
 - Some see gaps, e.g. north shore, others do not
 - Many identified improvements needed at Don Morse Park and Lakeside Park including parking
 - Several noted the crowds in the summertime
- Wenatchee/Entiat CCD
 - Columbia River, between Rocky Reach Dam and Entiat
- Malaga CCD – lacks all types of facilities
- Leavenworth-Lake Wenatchee CCD
 - Lake Wenatchee (north shore) and Fish Lake
- Cashmere CCD
 - Peshastin

DRAFT



**2000 Census County Subdivisions and WRIA Boundaries
Chelan County**

Chelan County
Shoreline
Master
Program

THE
WATERSHED
COMPANY



Chelan County Shoreline Master Program

WRIA Boundaries

- 40
- 45
- 46
- 47

USA 101708
Census County
Subdivisions

WRIA boundaries shown on this map are approximate. They should not be used for planning purposes only. Additional information is available by contacting the Watershed Company.

Participants also identified numerous opportunities, largely on public lands as listed in the following table.

CCD		Partial List of Opportunities
Cashmere		
Cashmere		WDFW site – opportunity for developed access
Peshastin		Peshastin Mill Flats, Dryden Dam. Lynn St .Easement
Chelan		Don Morse Park, Lakeside Park, Lakeside Micro Park, Chelan River
Entiat		City waterfront plan area and Entiaqua Park, Entiat River public access, Columbia River PUD property
Leavenworth-Lake Wenatchee		
Leavenworth		UGA private park
Lake Wenatchee		North shore Lake Wenatchee, road around lake, Fish Lake
Malaga		PUD, County, US Govt properties, public/private partnership
Manson		Bureau of Rec, Manson Marina, Pine Crest, Private if compensated
Wenatchee		South of bridge, two access/restoration sites

Next Steps

The County and Cities intend to develop shoreline public access recommendations as follows:

- Correct maps and data based on public input at workshops in April 2010
- Use public and agency input to address gaps and develop strategies
 - Early June – advertise two additional public meetings and discuss recommendations to address gaps
- Develop public access plans and SMP policies & regulations
 - Include in next version of draft SMP for additional public review anticipated in summer 2010.

Contact Information

Erin Fonville, Senior Natural Resource Specialist
Chelan County Natural Resource Department
316 Washington Street, Suite 401
Wenatchee, WA 98801
O: 509.667.6324
Erin.Fonville@CO.CHELAN.WA.US

Craig Gildroy
Planning Director
City of Chelan
135 E Johnson, Chelan, WA 98816
(509) 682-8017
cgildroy@cityofchelan.us

Appendix A: Workshop

Workshop Notes

City of Chelan: April 21, 2010

Sign-in sheet: 20 attendees

General Questions and Answers

- What does “should” mean? Can State require public access?
 - Public access plan can help avoid site by site requirements
 - Shoreline environment designations
 - There’s nothing “natural” in Manson.
- Don’t have as much access in lower lake/basin.
Lakeside park
- Intersection with water quality
- Having a lot of public access, e.g. Lake Chelan State Park – will that give lower priority for funding?
- There will always be peak use, e.g. Don Morse
 - Can address peak, e.g. 40% parking increase at Don Morse

Group 1 – City of Chelan/UGA

See map suggestions.

- DOG PARKS
 - Separate and within existing parks – appropriate size
- Do we estimate parks “level of service” at 85% of peak?
- What is our current park level of service?

Group 2 – Manson

See map suggestions.

- Road end- opportunity
 - Activity level concern
 - e.g. blocked driveways

- Willow Pt.
 - Need more parking
 - Need restrooms
- If there are private properties that are suitable for shoreline access- need purchase/compensation
- Willow Pt.- hard to turn around; Costly
- Concern- public access on private properties: security, parking, trash, noise
 - E.g. Antillon Lake weekends

Group 3 – Lake Chelan Watershed

See map suggestions. No notes.

Confluence Technology Center: April 22, 2010

Sign-in sheet: 24 attendees

Group 1 – Entiat/Columbia River

See map suggestions.

- Need more access on Entiat R. from Mad River to Tommy Cr.
 - Need more on Columbia R. from Rocky Reach Dam to Entiat
 - Need bridge below Maverick Saddle between Goose Cr.

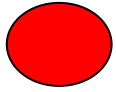
Group 2 – Wenatchee/Stemilt-Squilchuck Watershed

See map suggestions. No notes.

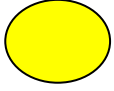
Group 3 - Cashmere/Peshastin/Leavenworth/Lake Wenatchee

- Road ends ~15 around Lake Wenatchee
- Irrigation district access roads=opportunity? Countywide.
- Concerns from irrigation districts – liability

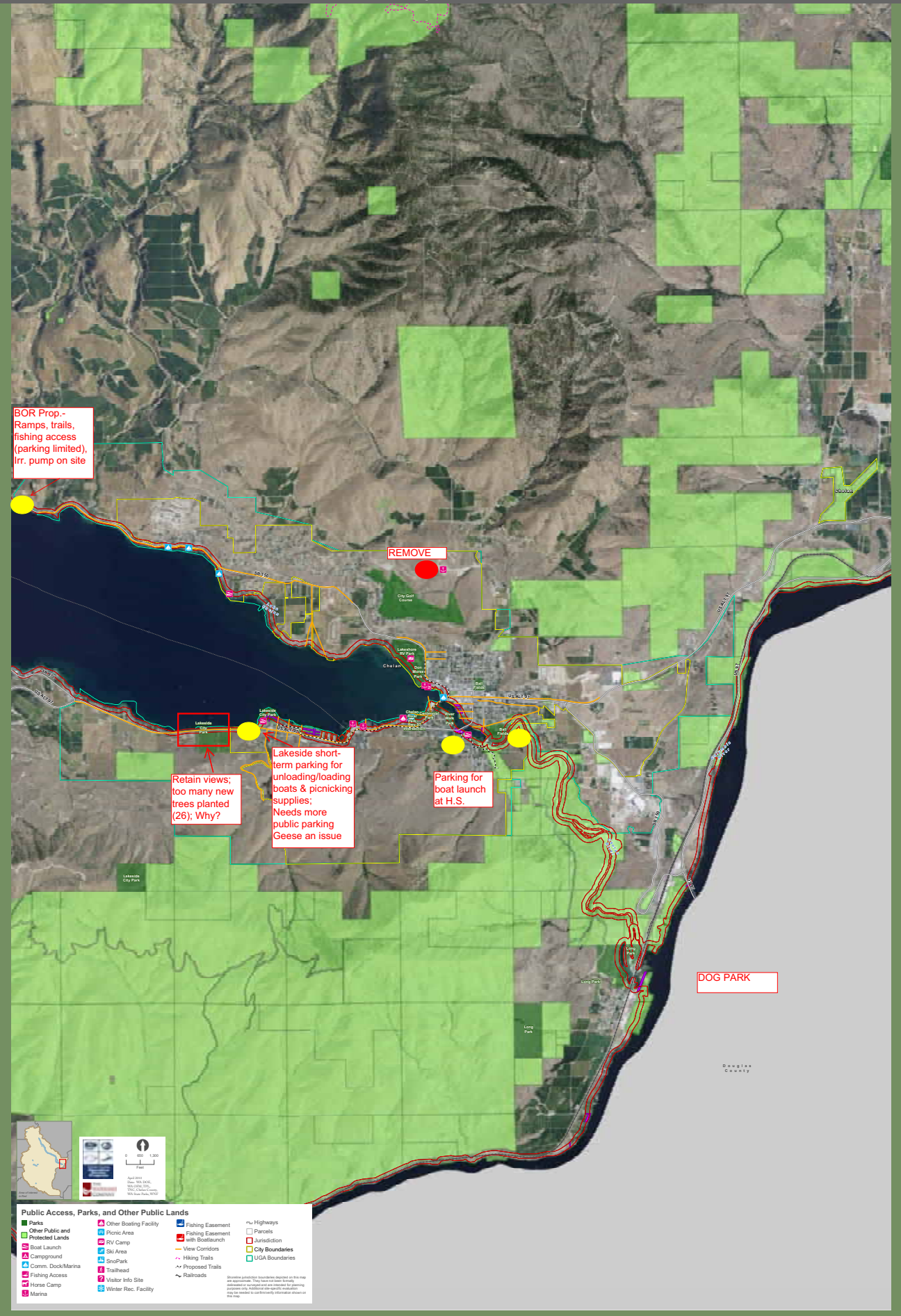
Workshop Map Legend



Change/Correction



Opportunity



Public Access & Recreation

Manson UGA

Manson Group 2

Pine Crest

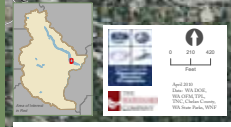
Parking prob.

If compensated, There is area for parking

BoR Pumping Area

Road end Harris

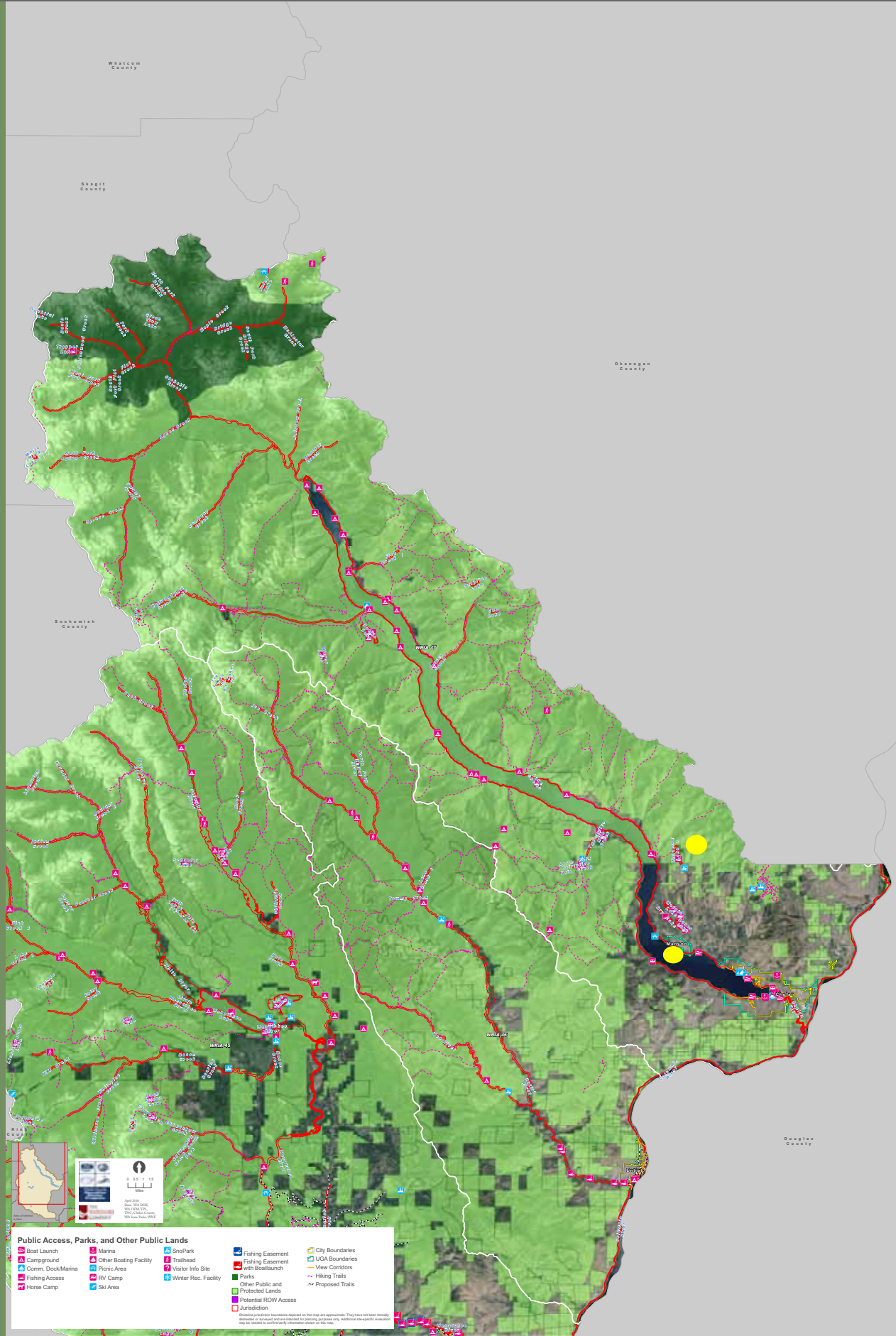
Only 10' wide



Public Access, Parks, and Other Public Lands

Parks	Other Boating Facility	Fishing Easement	Highways
Other Public and Protected Lands	Picnic Area	Fishing Easement with Boat/Launch	Parcels
Boat Launch	RV Camp	View Corridors	Jurisdiction
Campground	Ski Area	Hiking Trails	City Boundaries
Comm. Dock/Marina	Seapark	Proposed Trails	UGA Boundaries
Fishing Access	Trailhead	Railroads	
Horse Camp	Visitor Info Site		
Marina	Winter Rec. Facility		

Boundary jurisdiction boundaries depicted on this map are approximate. They have not been verified, established, or updated and are subject to changing jurisdiction. Any violation of state or federal law, including but not limited to trespassing, is strictly prohibited. The map is provided for informational purposes only.



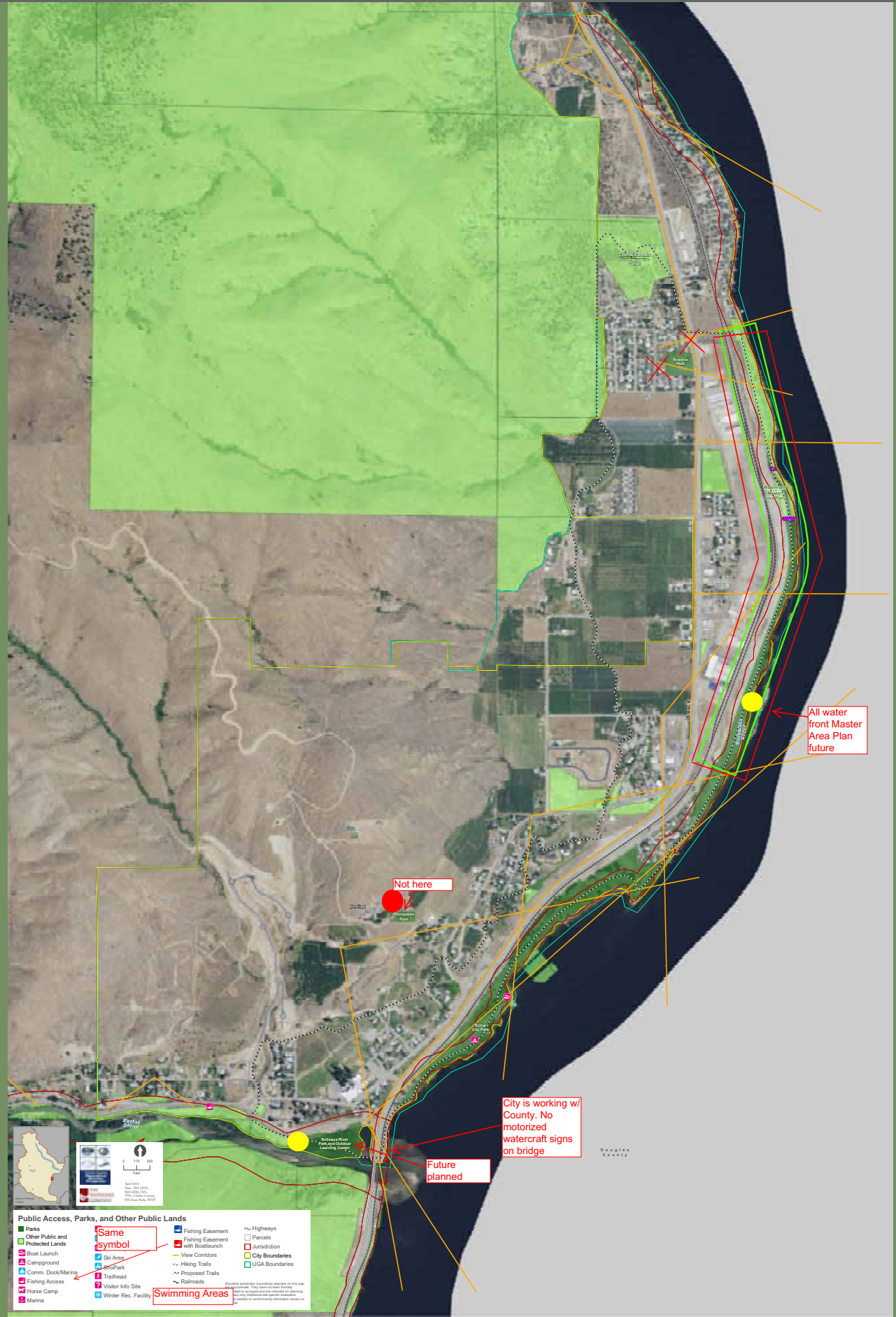
Public Access, Parks, and Other Public Lands

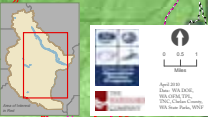
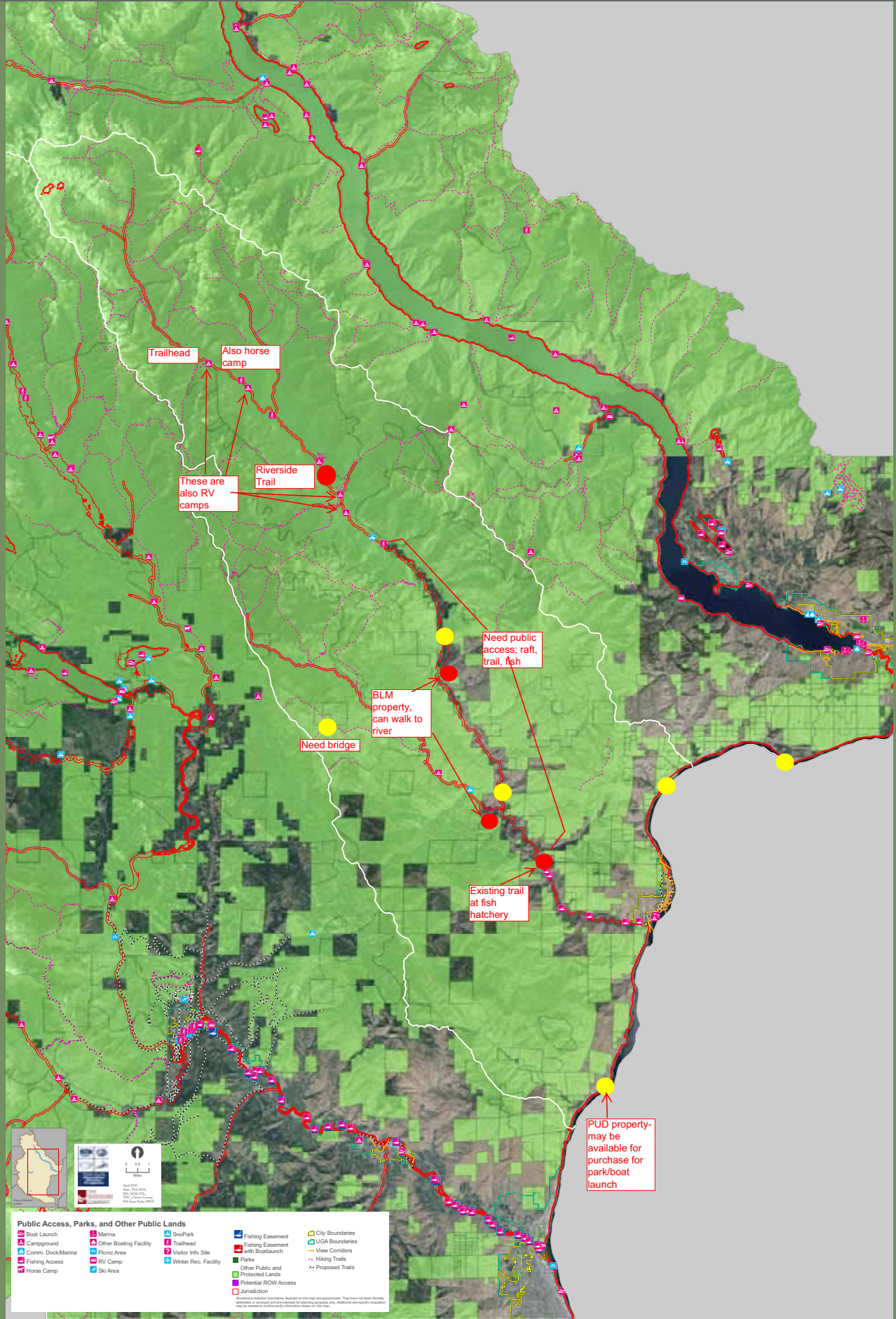
Boat Launch	Marina	SnowPark	Fishing Easement	City Boundaries
Campground	Other Boating Facility	Trailhead	Fishing Easement with Boat Launch	UGA Boundaries
Comm. Dock/Marina	Picnic Area	Visitor Info Site	Park	View Corridors
Fishing Access	RV Camp	Winter Rec. Facility	Other Public and Protected Lands	Hiking Trails
Horse Camp	Ski Area	Potential ROW Access	Jurisdiction	Proposed Trails

Boundaries and jurisdiction for this map are approximate. They have not been formally reviewed or approved and are provided for planning purposes only. Additional details and maps may be needed to confirm jurisdiction shown on this map.

Public Access & Recreation

City of Entiat



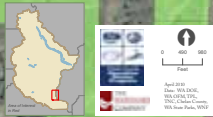
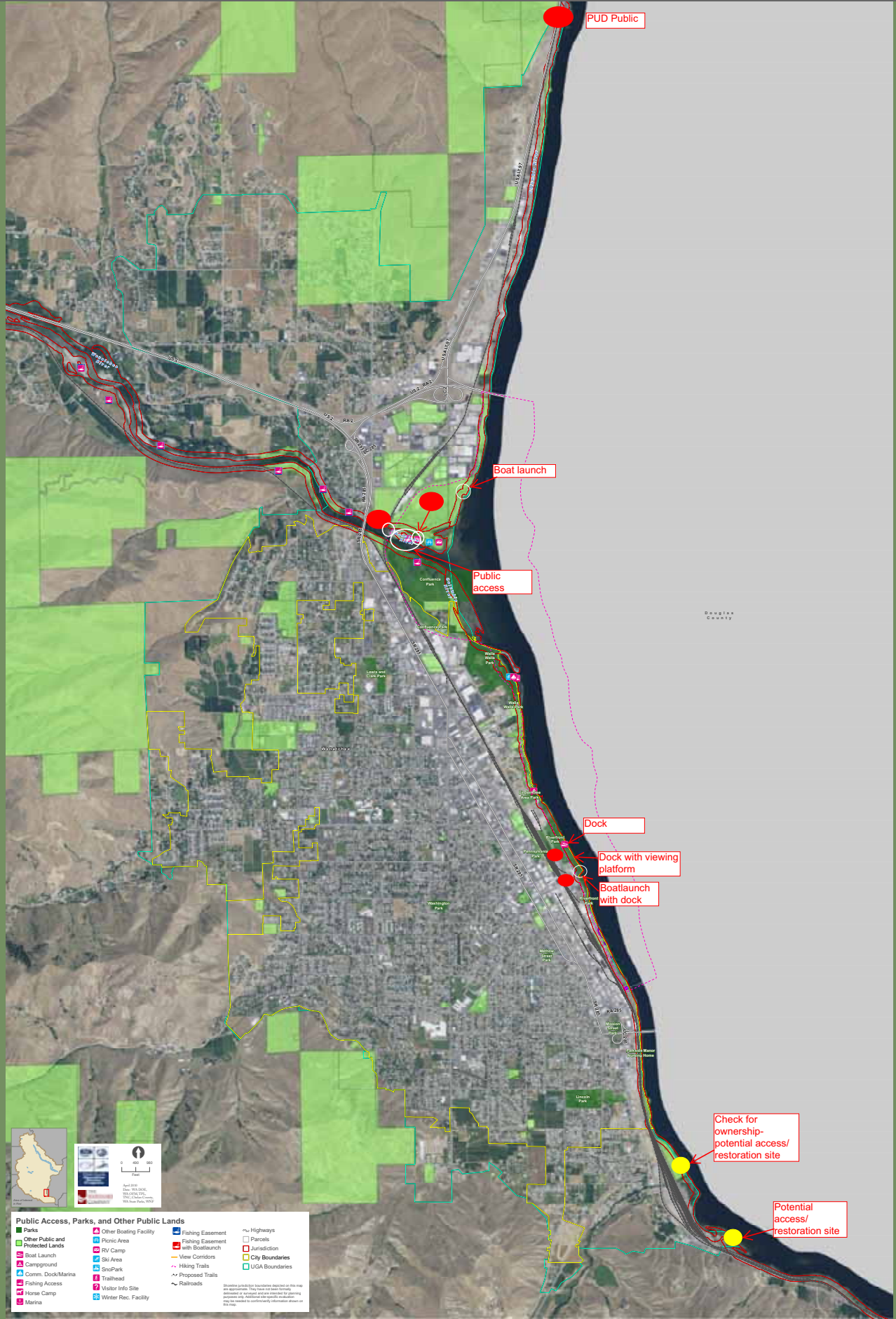


Public Access, Parks, and Other Public Lands			

Government jurisdiction boundaries depicted on this map are approximate. They have not been formally determined or approved and are provided for planning purposes only. Additional jurisdiction boundaries may be revealed by additional information shown on this map.

Public Access & Recreation

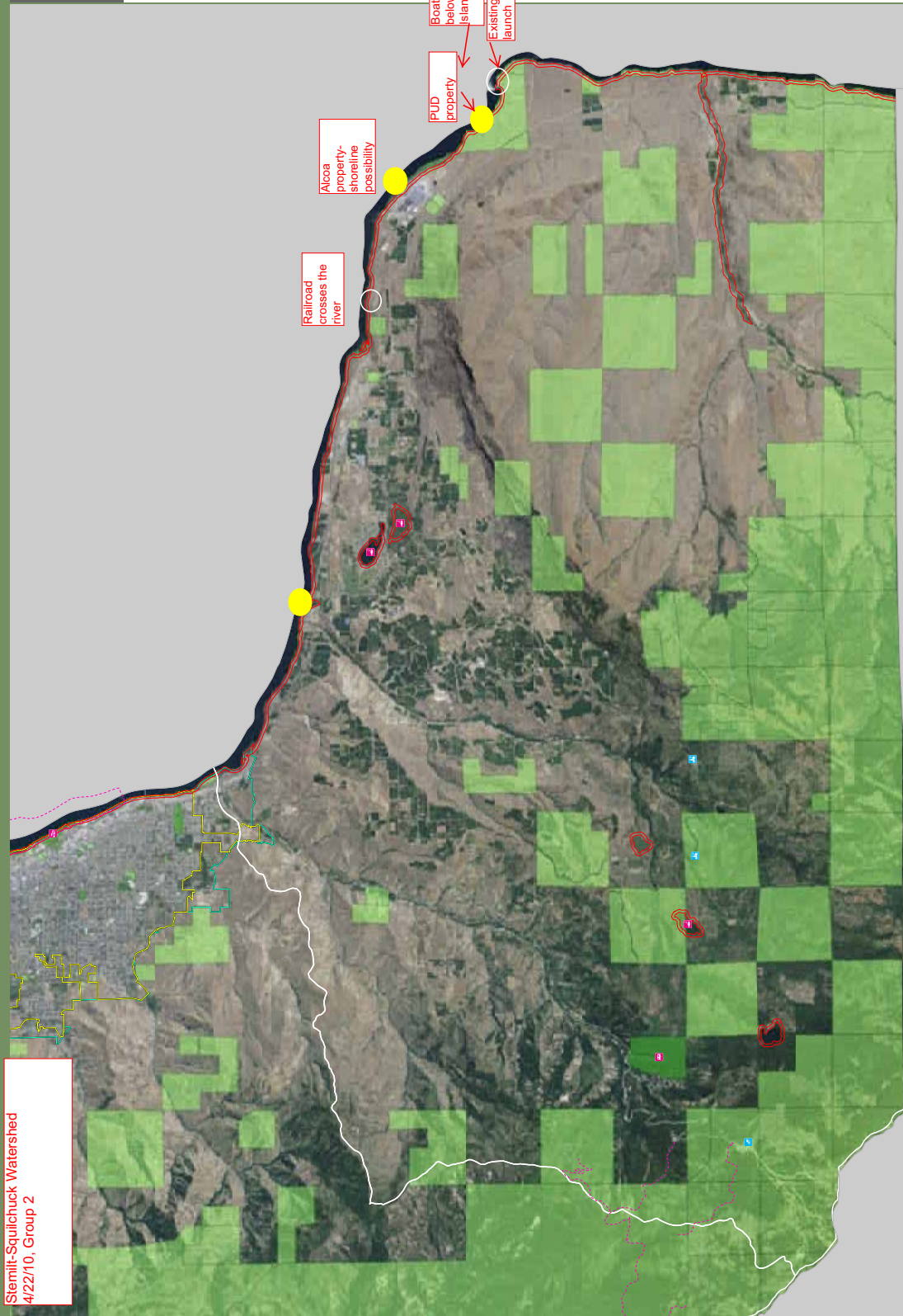
City of Wenatchee



Public Access, Parks, and Other Public Lands	
	Parks
	Other Public and Protected Lands
	Boat Launch
	Campground
	Comm. Dock/Marina
	Fishing Access
	Horse Camp
	Marina
	Other Boating Facility
	Picnic Area
	RV Camp
	SKI Areas
	SodPark
	Trailhead
	Visitor Info Site
	Winter Rec. Facility
	Fishing Easement
	Fishing Easement with Boatlaunch
	View Corridors
	Hiking Trails
	Proposed Trails
	Railroads
	Highways
	Parcels
	Jurisdiction
	City Boundaries
	UGA Boundaries

Boundary jurisdiction boundaries depicted on this map are approximate. They have not been verified by the City of Wenatchee. The City of Wenatchee is not responsible for any errors or omissions in this map. The City of Wenatchee is not responsible for any errors or omissions in this map.

Stemilt-Squilchuck Watershed
4/22/10, Group 2



Public Access & Recreation

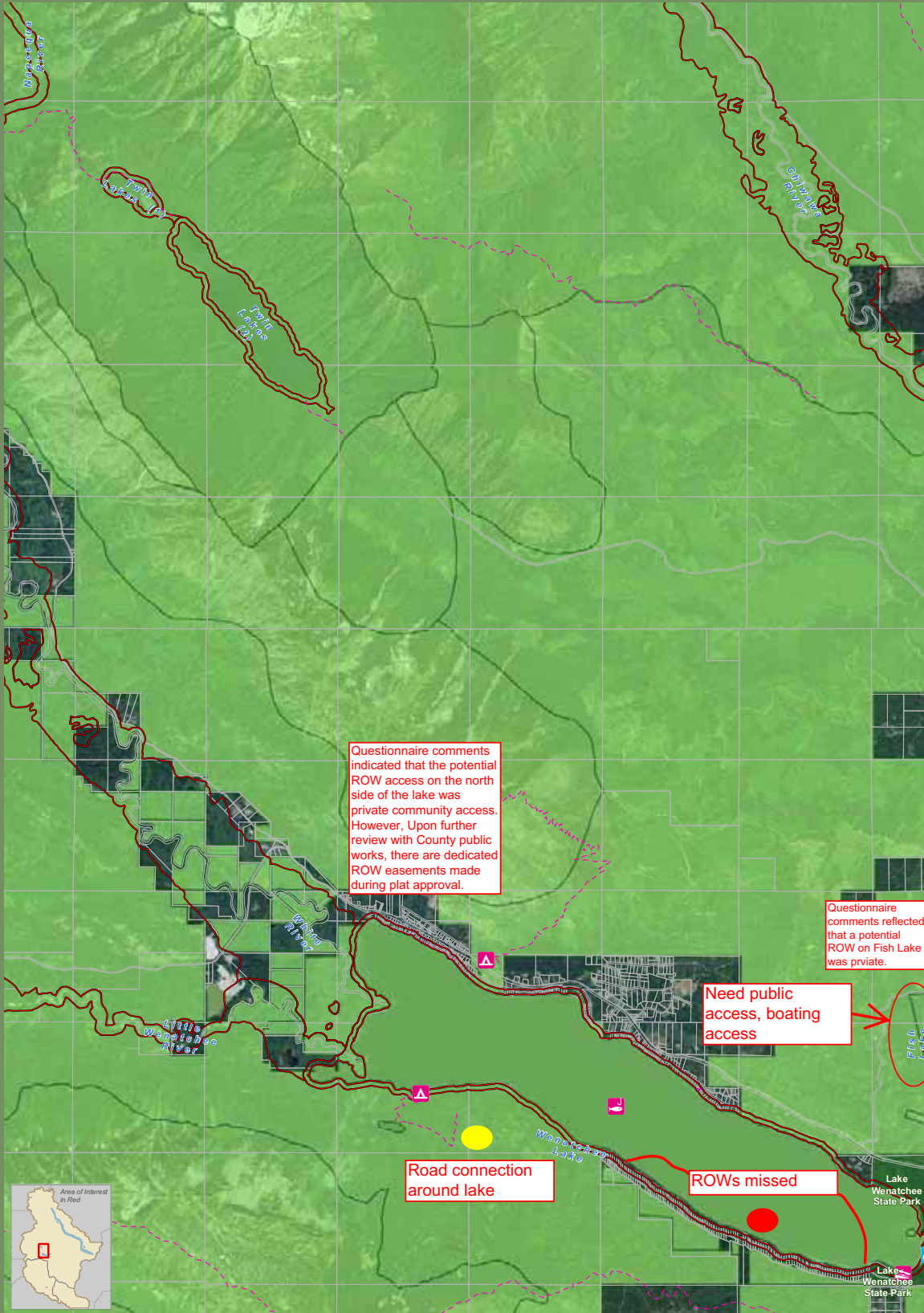
Stemilt-Squilchuck Watershed

- Public Access, Parks, and Other Public Lands**
- Boat Launch
 - Campground
 - Comm. Dock/Marina
 - Fishing Access
 - Horse Camp
 - Marina
 - Other Boating Facility
 - Picnic Area
 - RV Camp
 - Ski Area
 - SnoPark
 - Trailhead
 - Visitor Info Site
 - Winter Rec. Facility
 - Winter Rec. Facilities
 - Fishing Easement
 - Fishing Easement with Boatlaunch
 - Parks
 - Other Public and Protected Lands
 - Jurisdiction
 - City Boundaries
 - UGA Boundaries
 - View Corridors
 - Hiking Trails
 - Proposed Trails

April 2010
Data: WA DDE,
WA OPM, TPL,
TNC, Chelan County,
WA State Parks, WNF

Stemilt-Squilchuck Watershed is an organization. They have not been formally delineated or surveyed and are intended to provide a general overview of the watershed. Information may be needed to confirm verify information shown on this map.





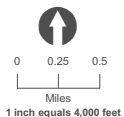
Public Access

25

Chelan County
Shoreline Master Plan Program

THE WATERSHED COMPANY

April 15, 2010
Date: WA DOE,
WA OFM, TPL,
TNC, Chelan County,
WA State Parks, WNF



Public Access, Parks, and Other Public Lands

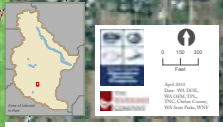
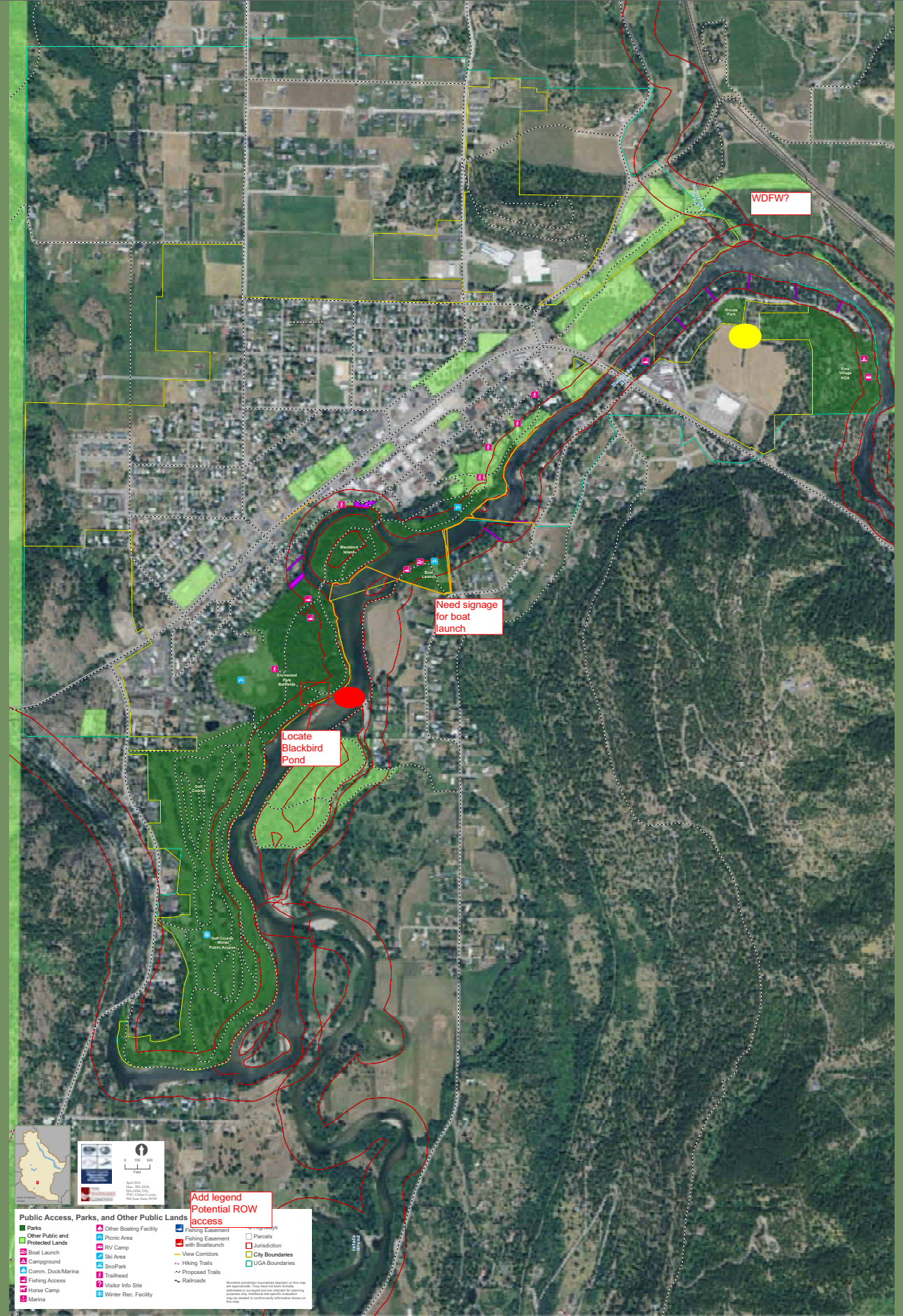
- Boat Launch
- Picnic Area
- Fishing Easement
- Campground
- RV Camp
- Fishing Easement with Boatlaunch
- Comm. Dock/Marina
- Ski Area
- Parks
- Fishing Access
- SnoPark
- Other Public and Protected Lands
- Horse Camp
- Trailhead
- Potential ROW Access
- Visitor Info Site
- Marina
- Winter Rec. Facility
- Other Boating Facility
- View Corridors
- Hiking Trails

Proposed Trails
Forest Service has map on N. side of lake

Shoreline jurisdiction boundaries depicted on this map are approximate. They have not been formally delineated or surveyed and are intended for planning purposes only. Additional site-specific evaluation may be needed to confirm/verify information shown on this map.

Public Access & Recreation

City of Leavenworth

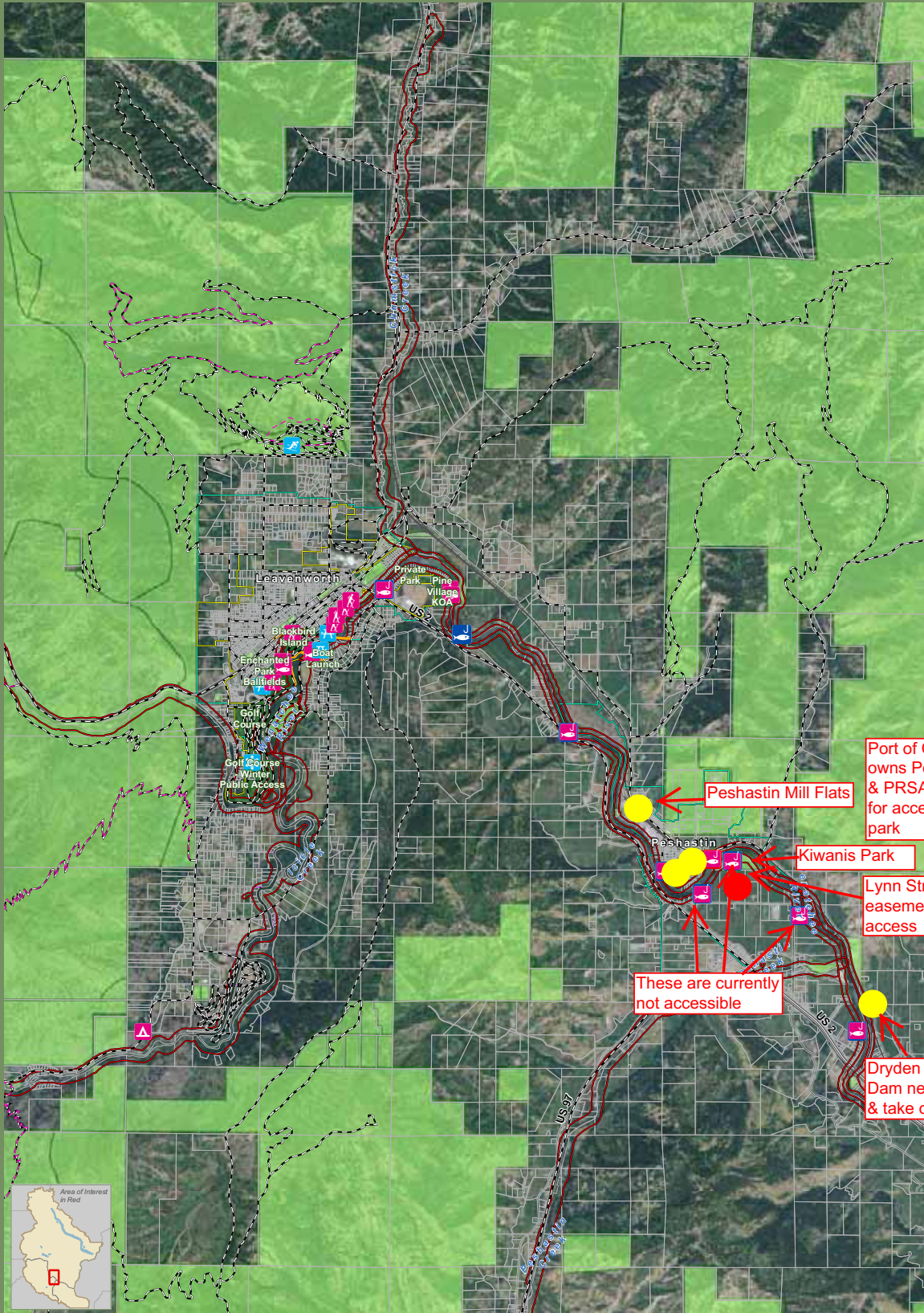


Public Access, Parks, and Other Public Lands

Parks	Other Boating Facility	Fishing Easement	Parcels
Other Public and Protected Lands	Picnic Area	Fishing Easement with Boat/Launch	Jurisdiction
Boat Launch	RV Camp	View Corridor	City Boundaries
Campground	Ski Area	Hiking Trails	UGA Boundaries
Comm. Dock/Marina	SandPark	Proposed Trails	
Fishing Access	Trailhead	Railroads	
Horse Camp	Visitor Info Site		
Marina	Winter Rec. Facility		

Add legend Potential ROW access

Boundary jurisdiction boundaries depicted on this map are approximate. They are not to be construed as a legal description. The City of Leavenworth, Kansas, is not responsible for any errors or omissions in this map. The City of Leavenworth, Kansas, is not responsible for any errors or omissions in this map.



Public Access

37

Chelan County
Shoreline Master Program

April 15, 2010
Data: WA DOE,
WA OFM, TPL,
TNC, Chelan County,
WA State Parks, WNF

THE WATERSHED COMPANY

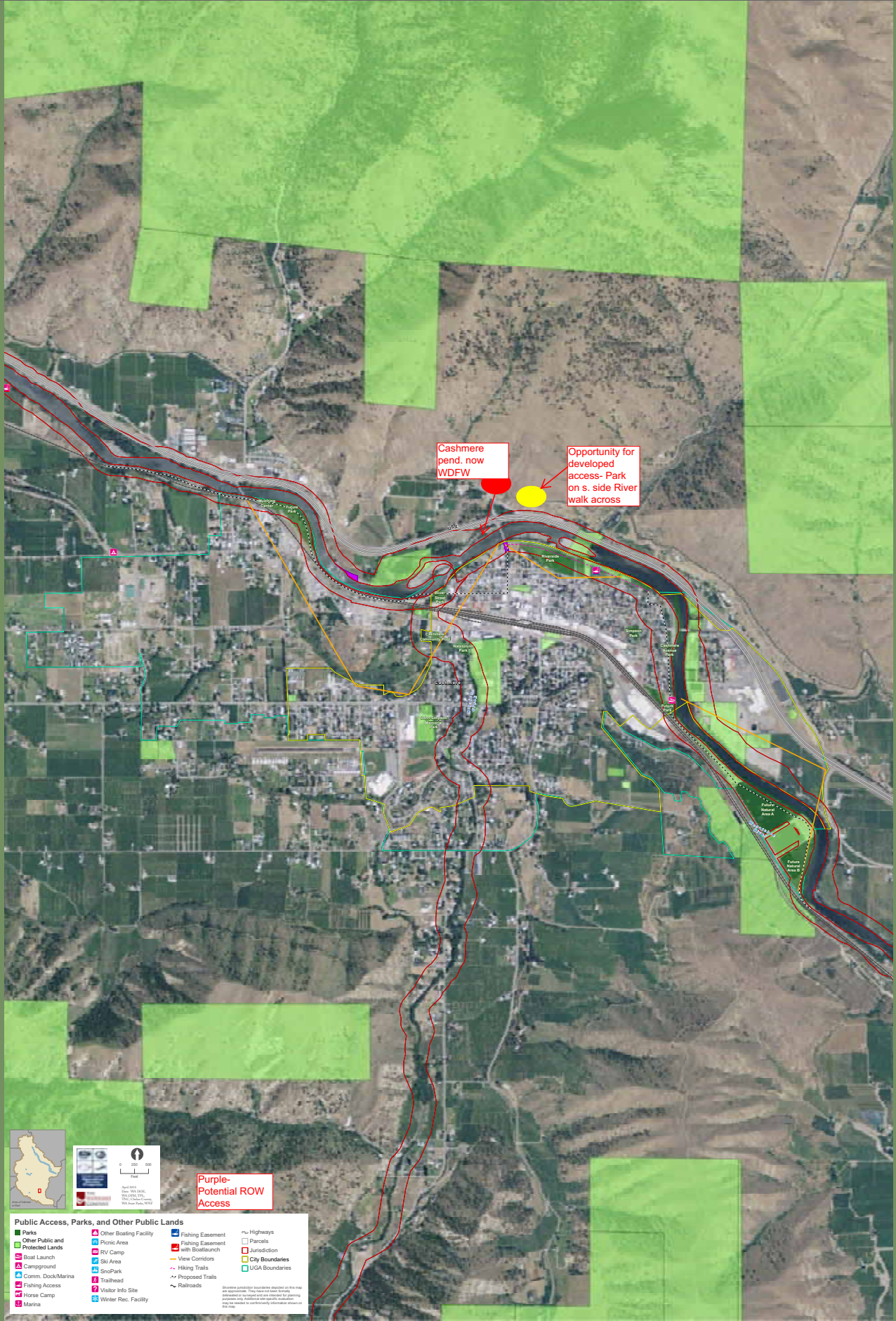
Public Access, Parks, and Other Public Lands

- | | | | |
|------------------------|----------------------|----------------------------------|-----------------|
| Boat Launch | Picnic Area | Fishing Easement | Proposed Trails |
| Campground | RV Camp | Fishing Easement with Boatlaunch | Highways |
| Comm. Dock/Marina | Ski Area | Parks | Railroads |
| Fishing Access | SnoPark | Other Public and Protected Lands | Parcels |
| Horse Camp | Trailhead | Potential ROW Access | Jurisdiction |
| Marina | Visitor Info Site | View Corridors | City Boundaries |
| Other Boating Facility | Winter Rec. Facility | Hiking Trails | UGA Boundaries |

Shoreline jurisdiction boundaries depicted on this map are approximate. They have not been formally delineated or surveyed and are intended for planning purposes only. Additional site-specific evaluation may be needed to confirm/verify information shown on this map.

Public Access & Recreation

City of Cashmere



Cashmere pend. now WDFW

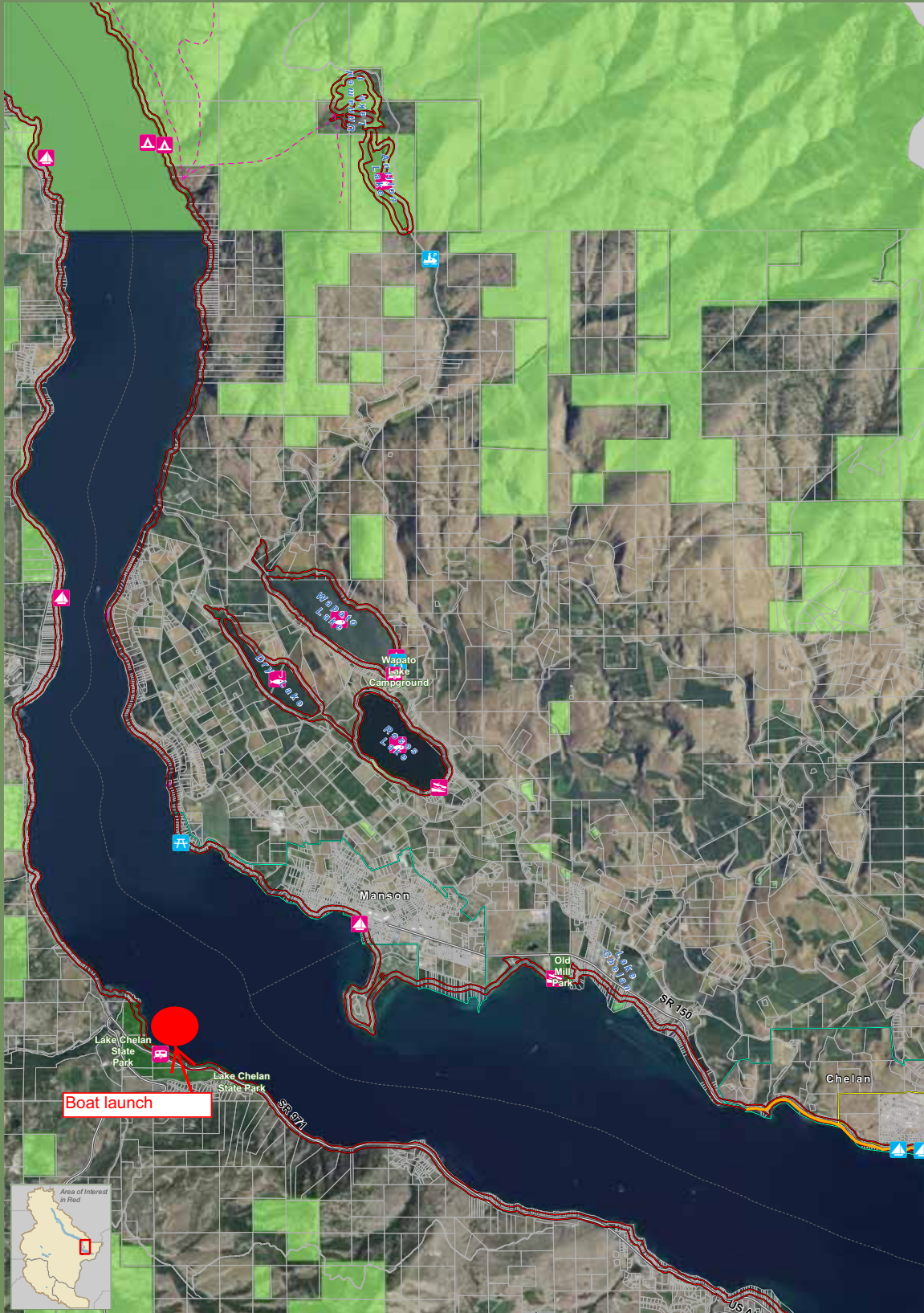
Opportunity for developed access- Park on s. side River walk across

Purple-Potential ROW Access



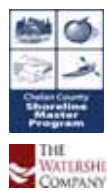
- Public Access, Parks, and Other Public Lands**
- Parks
 - Other Public and Protected Lands
 - Boat Launch
 - ▲ Campground
 - ▲ Comm. Dock/Marina
 - Fishing Access
 - Horse Camp
 - Marina
 - ▲ Other Boating Facility
 - Picnic Area
 - RV Camp
 - Sky Area
 - SandPark
 - Trailhead
 - Visitor Info Site
 - Winter Rec. Facility
 - Fishing Easement with BoatLaunch
 - Fishing Easement with BoatLaunch
 - View Corridors
 - Hiking Trails
 - Proposed Trails
 - Railroads
 - Highways
 - Parcels
 - Jurisdiction
 - City Boundaries
 - UGA Boundaries


Shaded jurisdiction boundaries depicted on this map are approximate. They are not intended to be used as a legal boundary. The City of Cashmere, WA, is not responsible for any errors or omissions in this map. The City of Cashmere, WA, is not responsible for any errors or omissions in this map.

















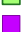













Public Access

18




 0 0.25 0.5
 Miles
 1 inch equals 4,000 feet
 April 15, 2010
 Date: WA DOE,
 WA OFM, TPL,
 TNC, Chelan County,
 WA State Parks, WNF

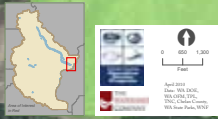
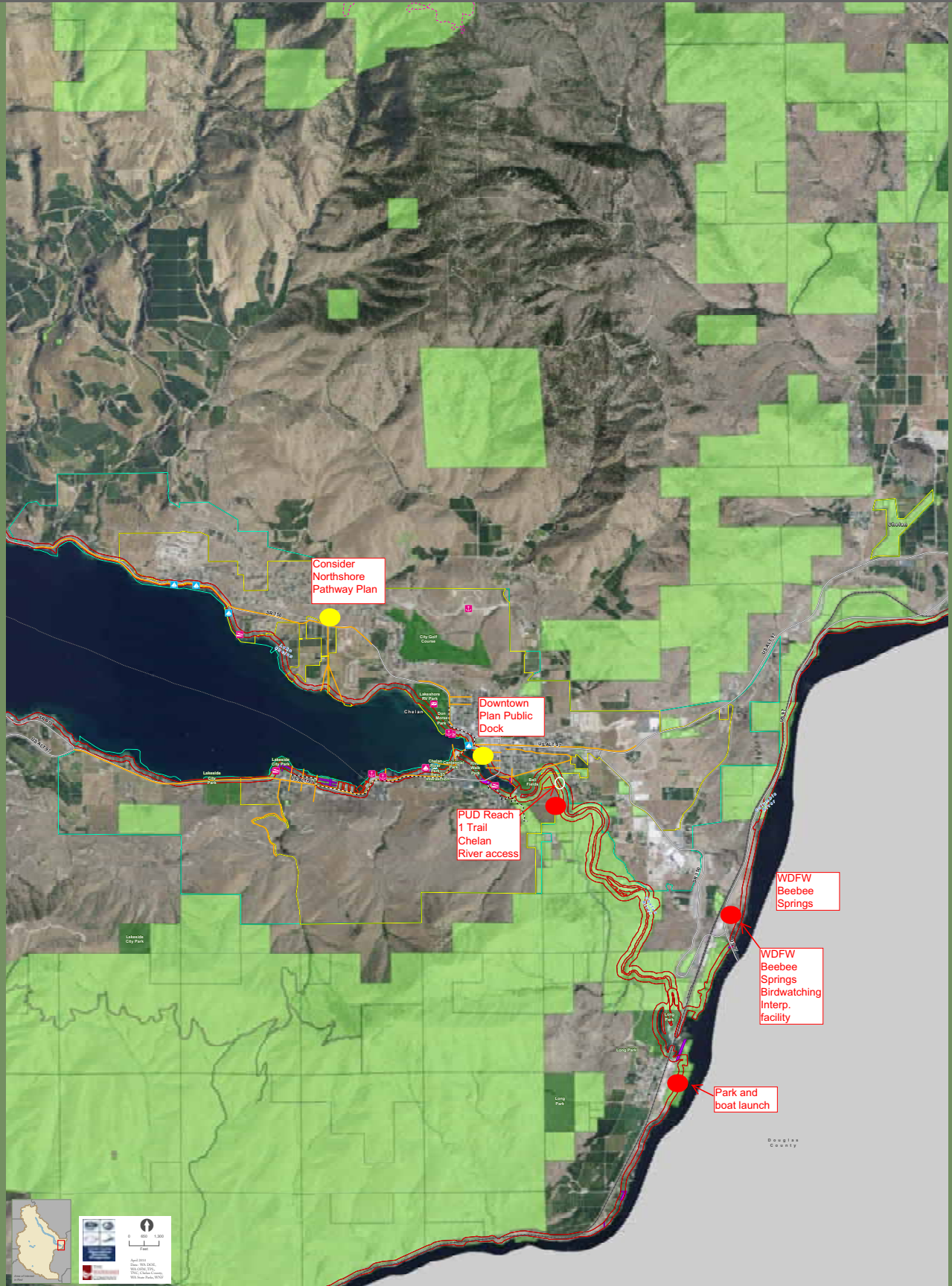
Public Access, Parks, and Other Public Lands

- | | | | |
|--|--|--|---|
|  Boat Launch |  Picnic Area |  Fishing Easement |  Proposed Trails |
|  Campground |  RV Camp |  Fishing Easement with Boatlaunch |  Highways |
|  Comm. Dock/Marina |  Ski Area |  Parks |  Railroads |
|  Fishing Access |  SnoPark |  Other Public and Protected Lands |  Parcels |
|  Horse Camp |  Trailhead |  Potential ROW Access |  Jurisdiction |
|  Marina |  Visitor Info Site |  View Corridors |  City Boundaries |
|  Other Boating Facility |  Winter Rec. Facility |  Hiking Trails |  UGA Boundaries |

Shoreline jurisdiction boundaries depicted on this map are approximate. They have not been formally delineated or surveyed and are intended for planning purposes only. Additional site-specific evaluation may be needed to confirm/verify information shown on this map.

Public Access & Recreation

City of Chelan

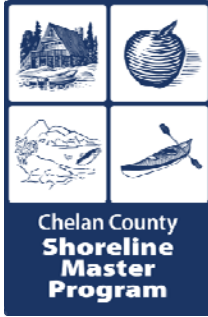


Public Access, Parks, and Other Public Lands

Parks	Other Boating Facility	Fishing Easement	Highways
Other Public and Protected Lands	Picnic Area	Fishing Easement with Boatlaunch	Parcels
Boat Launch	RV Camp	View Corridors	Jurisdiction
Campground	Site Area	Hiking Trails	City Boundaries
Comm. Dock/Marina	Seapark	Proposed Trails	UGA Boundaries
Fishing Access	Trailhead	Railroads	
Horse Camp	Visitor Info Site		
Marina	Winter Rec. Facility		

Shaded jurisdiction boundaries depicted on this map are approximate. They are not to be construed as a guarantee of jurisdiction or other specific information. The City of Chelan is not responsible for any errors or omissions on this map.

Appendix B: Questionnaire Results



Community Workshop on Public Access Planning City of Chelan, April 21, 2010

Public access refers to the ability of the general public “to reach, touch, and enjoy the water's edge, to travel on the waters of the state, and to view the water and the shoreline from adjacent locations” (WAC 173-26-221(4)(a)). Public access can be physical access such as via a trail or park and/or visual such as a view corridor from a road. Public access is a preferred use per the Shoreline Management Act (RCW 90.58.020). The Shoreline Master Program (SMP) Guidelines require that public access be provided with most new development, except that more flexibility is allowed where there is a coordinated public access planning process (WAC 173-26-221(4)(c)). The City of Chelan and Chelan County are preparing shoreline public access plans.

Please fill out the questionnaire below and return it this evening or mail it to the contact on page 2. Thank you.

Questionnaire – 10 Responses

1. Is there enough shoreline public access?

In the City of Chelan?		In Manson?		Other: _____	
<input type="checkbox"/> Yes Location: _____ _____	<input type="checkbox"/> No Location: _____ _____	<input type="checkbox"/> Yes Location: _____ _____	<input type="checkbox"/> No Location: _____ _____	<input type="checkbox"/> Yes Location: _____ _____	<input type="checkbox"/> No Location: _____ _____

Comments:

- No, City of Chelan, anywhere in city limits. No, Other, anywhere on the lake. The vast majority of the lower Lake Chelan shoreline is privately held. This limits public access. Any remedy to this problem will still result in limited access, so, in this case, more is better.
- Yes, way too much gov’t owned shoreline on Lake Chelan – about 80%. We need the government to sell off the 80% of shoreline they currently own, which would allow more access to it, and give the gov’t money in a trust to maintain what inventory they have left in a high quality usable fashion.
- Yes, City of Chelan. Use street ends as demand and money to support grows. Do not make development pay for public access.
- Yes, City of Chelan. Make the Lakeside & Don Morse Park more accessible and appealing.
- Desperately need a dog park with lake access! How about fencing off the area by the pumphouse at Lakeside? Only 1 fence would be needed.

- City of Chelan – Yes? No? The visual access is everywhere. I’ve noted that if people want to get to the water, they find a way. Provide additional parking at Don Morse, as this would help to get more people to the water.

2. What type of shoreline public access facilities are needed in the Lake Chelan area?

- | | | | |
|---------------------------------|--|---|---------------------------------------|
| <input type="checkbox"/> Parks | <input type="checkbox"/> Boat Launches | <input type="checkbox"/> Fishing Access | <input type="checkbox"/> Other: _____ |
| <input type="checkbox"/> Trails | <input type="checkbox"/> Marinas | <input type="checkbox"/> Campgrounds | <input type="checkbox"/> Other: _____ |

Comments:

- Parks, boat launches, trails, campgrounds. Day-use is the critical need.
- Only what our city can afford to maintain in the future, without undue city liability and not raising our taxes.
- Parks, boat launches, trails, marinas, campgrounds. Campgrounds update. If you add make the public land uplake less steep and get all the rocks out of it so it is sandy, that would be nice.
- Parks, Trails, Marinas. Year round marina slips are needed on Lake Chelan. When the lake is drawn down, there needs to be more boat moorage to allow year round access to the lake since boat launches become unusable.
- Dog park with lake access.
- Parks (upgraded), fishing access, trails, marinas. The Lakeside Park & Don Morse Parks are in serious need of upgrades. The parking problem at Lakeside can be resolved by 40% with new stripping.

3. What areas are well served by shoreline public access?

- Don Morse Park, Lakeside Park, State Park, Manson, Willow Point, 25 Mile Creek, Old Mill Park.
- We have a nice city park on each side of our lake.
- Lakeside Park – needs more parking. Revise property layout to avoid excess parking in the local neighborhood.

4. Where are there shoreline public access gap areas?

- Almost everywhere else.
- There will always be gaps, unless we get private donations. And have the money in our city budget to maintain those donated properties, otherwise they should be sold and the money put [into a] Trust to maintain the two large parks we already have.
- At USFS area. Move the USFS to the airport area & create a City park at the current USFS area on the water.
- There are physical gaps only, and this cannot be changed as there is private land between the 2 parks. However, this physical problem is off-set by the HUGE visual access advantage.

5. Where are opportunities to fill gaps in shoreline public access?

- Developer must be required to provide public access as part of development. Nothing else will provide sufficient access to meet needs 50 years from now.
- I don’t see our city having the money to procure. More shoreline and then to maintain it, so there are no gaps.
- Move the USFS to the airport area & create a City park at the current USFS area on the water.

- Multiple opportunities:
 - The proposed Sunset Marina will help with year around access. Rehab the parks will greatly assist.
 - We are in favor of placing emphasis on the south shore trail, from Don Morse Park to Lakeside and beyond. It makes sense to add improvements to the small micro-parks along the way and enhance the public use of these micro-parks as appropriate.
 - We heard a creative idea for the Chelan Ranger Station. Have the south shore trail run along the lakeside of the Ranger Station and consider the establishment of a public pier on that property incorporated into the trail system.
 - Are there some opportunities for a small swimming micro park connected with the Riverwalk Trail and located at the south west end of the old bridge, near the lift station, across the street from the Grandview Resort?
 - Are there some opportunities for a park located where the Bureau of Reclamation has its pumps half way out towards Manson?
 - Establishing a trail system into the Chelan River Gorge would be a wonderful enhancement as well.
 - Adding a day-use boat moorage in the Riverwalk Park near the Pavilion would be an attractive amenity.

6. Where are priority locations for shoreline public access?

- Our current two city parks, and city boat launch.
- Close proximity to center of City of Chelan = Don Morse Park.
- Improve Lakeside and Don Morse Parks. Develop the micro park on PUD property, uplake from the Fingers.

7. If you have other comments about any topic, please write them below.

- Get back to letting the people who live here enjoy living here without higher taxes, which force them to leave. Maintain well what you have no, or sell it and put the money in trust to maintain what you have left after the sale.
- Enhance uplake USFS docks to accommodate larger vessels.
- Craig, as the City looks at phases of the Lakeside Trail, the Forest Service may be able to partner with the City to improve trail access and alignment along the FS area. Let's discuss. Bob Sheehan.
- I agree that public access is desirable. I am concerned that the provisions of the proposal requiring granting of public access for developments of 5 or more lots, is a taking of owners rights without compensation. I haven't seen anything in the draft that addresses sanitation, security, noise, liability, parking requirements and those types of issues.
- There is ample public access at present in the lower Chelan basin. There continue to be parking considerations that need to be addressed around Lakeside Park. Geese are a health hazard as droppings are everywhere @ Lakeside Park. The shoreline is a mess. There is no accommodation for dogs, yet dogs are brought to the Lakeside Park and signs are ignored.

Thank you for your time. Please return questionnaires to:

Craig Gildroy

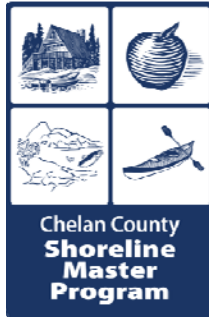
Planning Director

City of Chelan

135 E Johnson, Chelan, WA 98816

(509) 682-8017

cgildroy@cityofchelan.us



Community Workshop on Public Access Planning Subcommittee, April 22, 2010

Public access refers to the ability of the general public “to reach, touch, and enjoy the water's edge, to travel on the waters of the state, and to view the water and the shoreline from adjacent locations” (WAC 173-26-221(4)(a)). Public access can be physical access such as via a trail or park and/or visual such as a view corridor from a road. Public access is a preferred use per the Shoreline Management Act (RCW 90.58.020). The Shoreline Master Program (SMP) Guidelines require that public access be provided with most new development, except that more flexibility is allowed where there is a coordinated public access planning process (WAC 173-26-221(4)(c)). The City of Chelan and Chelan County are preparing shoreline public access plans.

Please fill out the questionnaire below and return it this morning or mail it to the contact on page 2. Thank you.

Questionnaire – 15 responses

1. Is there enough shoreline public access?

In Stehekin area?		In Manson area?		In Chelan area?	
<input type="checkbox"/> Yes Location: _____ _____	<input type="checkbox"/> No Location: _____ _____	<input type="checkbox"/> Yes Location: _____ _____	<input type="checkbox"/> No Location: _____ _____	<input type="checkbox"/> Yes Location: _____ _____	<input type="checkbox"/> No Location: _____ _____
In Entiat area?		In Leavenworth-Lake Wenatchee area?		In Cashmere area?	
<input type="checkbox"/> Yes Location: _____ _____	<input type="checkbox"/> No Location: _____ _____	<input type="checkbox"/> Yes Location: _____ _____	<input type="checkbox"/> No Location: _____ _____	<input type="checkbox"/> Yes Location: _____ _____	<input type="checkbox"/> No Location: _____ _____
In Wenatchee area?		In Malaga area?		Other: _____	
<input type="checkbox"/> Yes Location: _____ _____	<input type="checkbox"/> No Location: _____ _____	<input type="checkbox"/> Yes Location: _____ _____	<input type="checkbox"/> No Location: _____ _____	<input type="checkbox"/> Yes Location: _____ _____	<input type="checkbox"/> No Location: _____ _____

Comments:

Stehekin

- Don't know

Manson

- Yes, there is a beautiful park in downtown Manson with swimming, boating, and viewing areas. There is a large boat launch in Mill Bay approx 1 mi. east of downtown Manson and there is a very nice park at Willow Point about a mile west of downtown Manson. There are numerous small lakes around Manson that have excellent access for swimming, boating, fishing, and viewing.
- No, need along Lake Chelan
- Don't know

Chelan

- No, north shore of lake
- Don't know
- Chelan has HUGE visual access & adequate physical access. Chelan could re-hab their parks, parking at Lakeside and build the micro park uplake from the Fingers.

Entiat

- Yes, in city boundary
- No, Entiat Ridge

Leavenworth-Lake Wenatchee

- No, Lake Wenatchee, need along Cedar **Brac** and North Shore Drive.
- Yes, Wenatchee River, Icicle Creek
- No, Lake Wenatchee, Fish Lake
- No, location needs more at far end where White river empties into lake (approximately near the former Cougar Inn location)
- No, Fish Lake
- No, Lake Wenatchee
- No, Lake Wenatchee. Since the Cougar Inn closed, the northwest end of the lake is without reasonable launch facilities. There are Public Access areas designated but are overgrowth and mosquito infested. They don't even lend themselves to launching a canoe!
- No, north end of Lake Wenatchee
- No, Lake Wenatchee. More public access is needed at Lake Wenatchee.
- Yes, State Park, Glacier View Campground, National Forest –North Shore
- Leavenworth has plenty of shoreline access.

Cashmere

- Yes, in city boundary
- Cashmere has plenty of access

Wenatchee

- Yes, in city boundary
- Don't know

- Wenatchee has plenty of shoreline access

Malaga

- No, need access to the Columbia River
- Don't know
- Malaga has no physical & minimal visual

Other

- No, between Rocky Reach Dam and Entiat, need park and launch.
- Peshastin-Dryden-Monitor take up a long section of the River. Why are they not included here? This is not just an urban planning issue.
- No, Peshastin, Port property should be public access.
- No, Natapoc Ridge, River Rd. to Hwy 2. Many people are very with the obliteration of part of the trail (Old Forest Road) from the end of the River Road to Highway 2. During comment periods 3 years ago we were told that access was not going to be disturbed!

2. What type of shoreline public access facilities are needed in the County?

- | | | | |
|---------------------------------|--|---|---------------------------------------|
| <input type="checkbox"/> Parks | <input type="checkbox"/> Boat Launches | <input type="checkbox"/> Fishing Access | <input type="checkbox"/> Other: _____ |
| <input type="checkbox"/> Trails | <input type="checkbox"/> Marinas | <input type="checkbox"/> Campgrounds | <input type="checkbox"/> Other: _____ |

Comments:

- Propose trail up Wenatchee River from Confluence Park excellent idea. Trail access is seriously needed to Wenatchee River from Dryden to Leavenworth.
- Parks, trails, boat launches.
- Parks, Fishing Access, Trails, Windsurfing & Kiteboarding.
- Parks, Trails. Some supposed "fishing access" sites have little or no true access (place to park and a way to walk to them).
- Boat launches, trails, kayak landings on Wenatchee River
- Parks, boat launches. Re: Lake Wenatchee, the boat launch is located at the Stake Park and has virtually no parking and by mid summer the river passage is dangerous with large boulders near surface. Need another/improved boat launch.
- Boat launches, marinas
- Parks, trails, campgrounds
- Parks, boat launches, fishing access, trails, campgrounds

3. What areas are well served by shoreline public access?

- Manson is well served with a large park downtown and excellent boat launch facilities.
- City of Leavenworth, City of Entiat, City of Wenatchee.
- The Wenatchee River, Icicle Creek rivers have enough public access.
- Only access is at State park and end of lake (Lake Wenatchee).
- State park at Lake Wenatchee.
- Wenatchee area.

- Lake Wenatchee area has excellent public access through the state park and the national forest campground- Glacier.

4. Where are there shoreline public access gap areas?

- River access to the Wenatchee River particularly between Plain and Lake Wenatchee. There are several supposed access points but they have been blocked off. Access to the river is seriously needed between Dryden and Leavenworth. Why are we seeing new construction immediately adjacent to the river across from the Smallwood concession?
- Along the Columbia River between Wenatchee and Entiat. There currently are no boat launches or parks for the public.
- Lake Wenatchee lacks public access in all areas but the State Park. Fish Lake has no public access for fishing.
- Peshastin has virtually no access.
- Need boat launch other than State park (Lake Wenatchee).
- Lake Wenatchee on North Shore Road area or north end of Lake.
- Lake Wenatchee – one State Park and one Forest Service Campground on a 6-mile long lake?

5. Where are opportunities to fill gaps in shoreline public access?

- There is PUD property that they are willing to sell that could be developed into a park & boat launch area.
- Create a park on the north shore of Lake Wenatchee.
- There needs to be an updated clear inventory of actual access in order to have this discussion. Otherwise we are all going in circles debating about “enough” of an unknown amount.
- Improve visibility of other access locations and add boat launch.
- Forest Service land, North Shore Road presently vacated.
- I don’t know because of all the private land.

6. Where are priority locations for shoreline public access?

- Between Plain and Lake Wenatchee and from Dryden to Leavenworth. At one time a very attractive park was proposed up river from Plain near the bridge and Chelan County fire station. However, at that time Chelan County would not support a park needed in this area. Since then the area population has grown markedly.
- South shore of Lake Chelan, Entiat River above Mad River, Columbia River between Rocky Reach Dam & Entiat, Columbia River between Entiat & Chelan Falls, Manson, north shore of Lake Chelan above Manson, Lake Wenatchee along Cedar **Brac** and North Shore Drive.
- Lake Wenatchee. The State Park gets very crowded in summer with boats, PWC, and people in a small area.
- Peshastin Port Property
- Mid lake (Wenatchee)
- North end of Lake Wenatchee
- Somehow public access to Lake Wenatchee needs to be increased. Right now 95% of the lakeshore is off limits to public use.

7. If you have other comments about any topic, please write them below.

- I tried to negotiate the idea of a major stretch of the Wenatchee River Front in the Dryden being picked up by the Land Trust. While most thought it was a good idea including the land owner, the idea seems to have evaporated.
- As 25-year home owners (and soon to be full time residents) adjacent to John Bishop Rd on Hyacinth Road in Manson, my wife and I have been concerned about various comments we've heard or read in the paper about using this narrow access with bulkhead and deep water as a natural point of public access for Lake Chelan. There is no reasonable way to use this property for direct access to the lake due to the narrow width of the property, the close proximity to adjacent homes and the 6-8 foot depth of the water at the base of the bulkhead. We paid to do a major repair on the bulkhead several years ago and now it is need of structural repairs, without which, there will be consequences to the adjoining private properties. In addition, swimming from this location would present a danger to swimmers due to the heavy boat and personal watercraft activity adjacent to the property. It's not unusual to have a number of instances each year where people trespass on the adjoining private properties and, on occasion, use the private docks. We also have a big problem with trash from Singleton Park across the street. I can only imagine how much worse it would be if this area is used for public access. The property is currently completely open for viewing to the lake from Hyacinth Road, since it has been well maintained for the past many decades by the two adjoining property owners. It currently provides a good opportunity for people walking on Hyacinth (mostly renters from Wapato Point) to "view" the lake. I suspect it would make more sense, for a longer range plan, to negotiate for access on the Wapato land just to the east where there are several hundred feet of easily accessible waterfront.
- Thanks for listening.
- Possibly acquire some of Forest Service Campground access on **Univ WA** access for boat launch (Lake Wenatchee).
- Public access areas need to be more clearly marked. Also, if something can be done (e.g. voluntarily by local residents) to remove brush and improve access and usability, it would be good to post those suggestions somewhere on the web.
- Lake Wenatchee is inherently dangerous when the wind blows from north to south. The park ramp is surrounded by huge rocks making it dangerous to get to when high winds prevail.

- I have looked at the maps of Lake Wenatchee (25) and Fish Lake (26).and have the following comments:

- **Lake Wenatchee:** Boat access to Lake Wenatchee is adequate. The boat launch at the State Park at the east end of the park is the primary launch site. It is possible to launch small boats and canoes from the USFS Camp Ground at the west end of the lake on the South side.

We discussed the USFS lands on the north side of the lake between the YMCA Camp and the built up area to the west. This area is currently used occasionally by wind surfers. It should remain undeveloped as it currently serves as access to the lake for wildlife. Deer, wild turkeys and other animals have been observed going to and from this area. Deer come down to the lake at dusk at this location on a regular basis, especially in the summer.

If this is a shore line study, I question the inclusion of the nonexistent campground at the Ranger Station. As far as I know It really is a trail head to Dirtyface Mountain and I know of no public lake access at this location.

- **Fish Lake:** Boat access at Fish Lake is adequate. The best access is at the Cove Resort on the south side of the lake. The access on the north side of the lake at Cascade Hideaway is restricted to members only. The USFS Has established an access site located on the northeast portion of the lake and is reached by a dirt road, USFS Road 6202, around the east end of the lake . The entrance is from the Chiwawa River Road, USFS Road # 62. This site is adequate for small boats and canoes only. There is no trailer access.
- **Wenatchee River between Lake Wenatchee and Tumwater Canyon:** I do recommend a small boat/canoe access site be located in the gravel pit at Shugart Flats. This area currently has a no Trespassing Sign posted by Chelan County. There also used to be a public access point at Chiwawa River Pines but it is now restricted to residents only.
- Remainder of the Preliminary Draft, Shoreline Public Access Plan:

In looking over the rest of the plan I had a hard time accepting the combining of Leavenworth and Lake Wenatchee (I assume this includes Plain and Nason Creek as well).

While this makes it easy for the researchers to use the Postal Service Zip Code Area, It makes it impossible to break out Lake Wenatchee from the City of Leavenworth. The two are over 20 miles apart. Tables 2 thru 8.

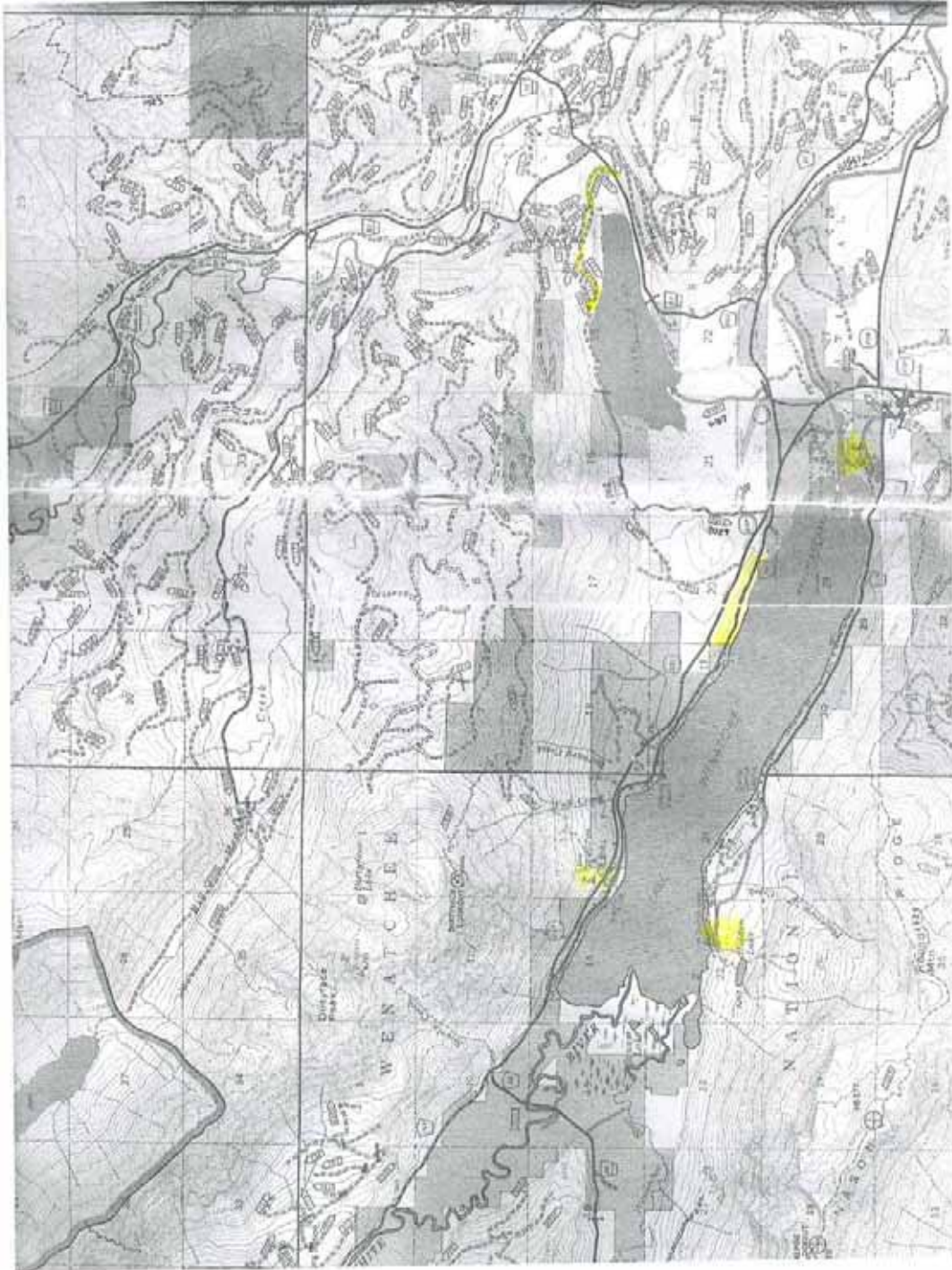
Table 11, Local Example Approach, Local Recreation Standards. This table is for Lake Wenatchee and Fish Lake. I find it confusing looking at all recreation facilities and not just shore line access. Again the combined population figures cause a distortion in my mind.

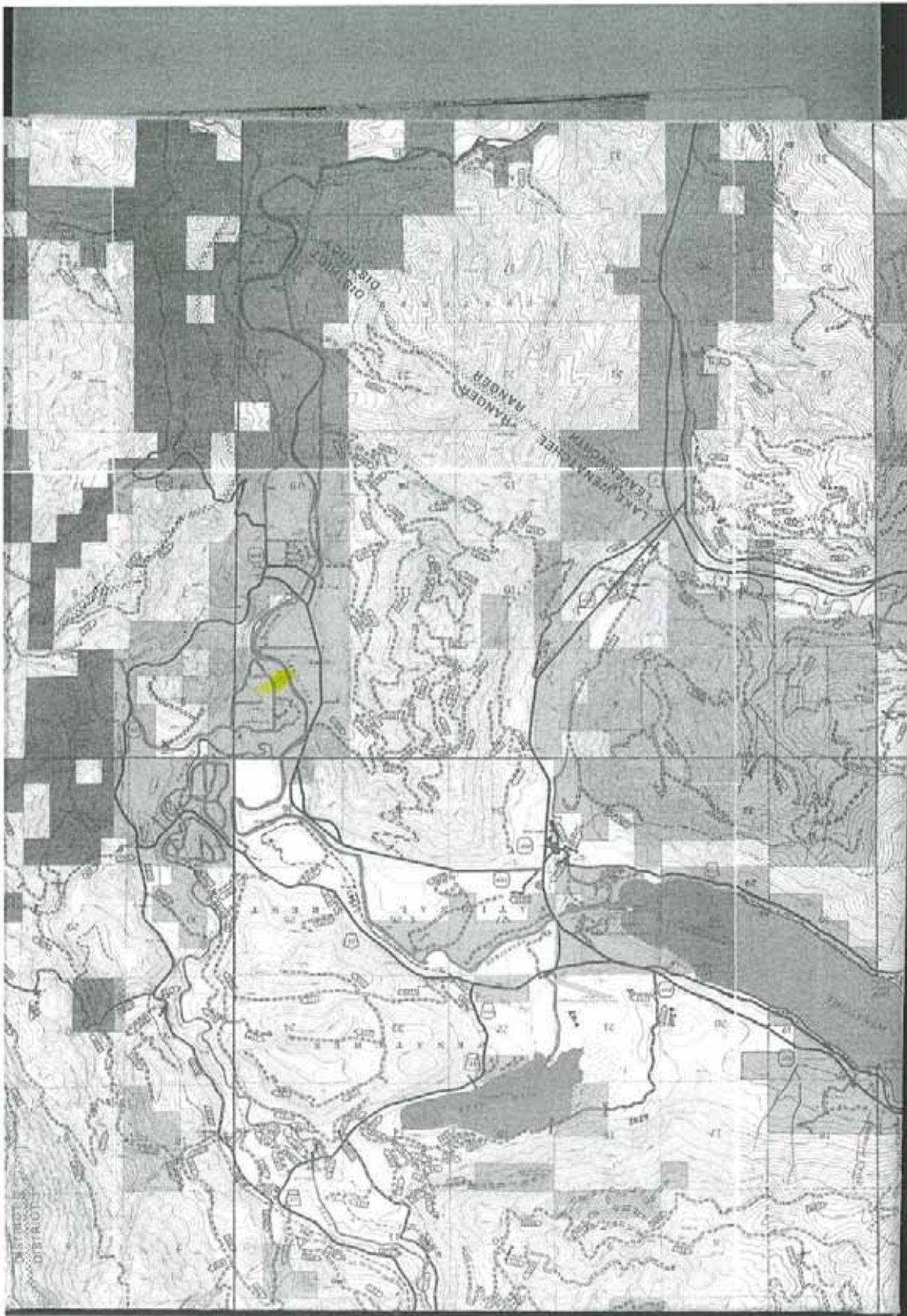
- **Nit Picks:** The primary launch site at the Lake Wenatchee State Park is hidden by the small location Map in the lower left hand corner of map 26

I figured out that the maps go from west to east and from north to south. I still recommend an index map showing the location of each map sheet. It is time consuming to find a specific location without one.

Will the 2010 census information be available before this study is completed?

I am mailing a copy of the map of the lake Wenatchee-Fish Lake area with the areas mentioned above marked with a highlighter. A second map of the Shugart Flats area is also enclosed. Both of these maps are just for your information so you can see where and what I am talking about in case you are not that familiar with the area. I hope this helps.





Erin Fonville

From: Gwendolyn Walsh [grendyl@earthlink.net]

Sent: Friday, April 23, 2010 4:02 PM

To: Erin Fonville

Subject: Re: "Thank You" and the Public Access Questionnaire

I am not sure if my remarks worked on your questionnaire. My concern is that on Western Northshore drive (17000-18000 addresses) there are some of those "access" streets every 4 lots. One near my home has a sewer installation in it, and the other to the East has no parking at all, and no trail. It is just a wooded lot. There is NO PARKING on any section of Western Northshore drive, as the shoulders are very limited, and used only for residential use. Western End of Lake Wenatchee is all residential and wouldn't be appropriate for Public Access, as those Access lots are only for the folks above the Road who have homes there. I am interested in what has been marked as "access", as you have mentioned 11 possible sites. I can't seem to find this information in what you have sent so far, can you please clarify?? My home is at 17815 Northshore Drive.
Thanks,
Gwendolyn Walsh

on 4/23/10 9:16 AM, Erin Fonville at Erin.Fonville@CO.CHELAN.WA.US wrote:

Thanks to all that were able to attend our recent public access workshops. We had a great turn out and received some valuable input that we will be folding into the next draft of the public access plans. We plan to have follow-up meetings the end of May and will send you all an e-mail when we have scheduled them.

If you were unable to attend and would still like to provide us with your comments, please fill out the attached questionnaire and return to me either by email or postal mail.

I also have extra hard copies of the County and Cities Preliminary Draft Public Access Plans with full color 11x17 maps attached. You can either stop by our office to pick them up or I can drop them in the mail for you.

Best wishes and Happy Apple Blossom,

Erin Fonville, Senior Natural Resource Specialist
Chelan County Natural Resource Department
316 Washington Street, Suite 401
Wenatchee, WA 98801
O: 509.667.6324 C: 509.699.9016
CCNRD Website: www.co.chelan.wa.us/nr/nr_main.htm
<http://www.co.chelan.wa.us/nr/nr_main.htm>

4/29/2010

Erin Fonville

From: Erin Fonville
Sent: Thursday, April 29, 2010 12:58 PM
To: 'Gwendolyn Walsh'
Subject: RE: "Thank You" and the Public Access Questionnaire

Wendy,

Thanks for the info. I will pull up the plat maps and talk with our assessor's office. It sounds like these are not true public ROW's so we need to remove them from our plan and maps.

Erin Fonville, Senior Natural Resource Specialist
Chelan County Natural Resource Department
316 Washington Street, Suite 401
Wenatchee, WA 98801
O: 509.667.6324 C: 509.699.9016
CCNRD Website: www.co.chelan.wa.us/injur_main.htm

From: Gwendolyn Walsh [mailto:grendyl@earthlink.net]
Sent: Wednesday, April 28, 2010 7:14 PM
To: Erin Fonville
Subject: Re: "Thank You" and the Public Access Questionnaire

Thanks so much Erin. I looked at your purple ROW access points, and those are the ones I am concerned about. There is no place to park as there are no shoulder parking spots, and most of these "access" areas have trees or other obstacles so create frustration and confusion for outsiders who want to use them. There are also no beaches...only rocky edges.

They were originally created for access of the cabins on the North side of the road...not for the general public. They were part of a development concept to allow residential access only, not public access.

I am not trying to be exclusive, as my home isn't on one of these accesses, but have experienced the confusion that the "public" who comes from elsewhere expresses when trying to find these "accesses" to the beach, which do not exist.

I suggest your planning folks delete these from their considerations, and recognize that these are only local residential accesses, not meant for outside folks who drive to the areas.

Thanks so much for responding.

Gwendolyn (Wendy) Walsh

on 4/26/10 10:25 AM, Erin Fonville at Erin.Fonville@CO.CHELAN.WA.US wrote:

Gwendolyn,

Thanks for the comments and information. I will pass on to our consultant for inclusion in the plan. The 11 access points mentioned on the Lake Wenatchee info website refer to the map that was part of the preliminary draft Shoreline Public Access Plan for Chelan County. They are also mentioned in Table 13 of the report on page 23. The access points are located on the north shore and they are identified in purple as "Potential ROW Access" on the map. I have attached the map and report. I think these may be some of the county ROW easements that are along the lake (20 foot strips every 600 feet) but have an e-mail into the person that put them together to see where the data came from. The access points are by no means accessible or have they been identified on the ground or verified. They were

4/29/2010

placed on the maps for planning purposes only.

Hope this information answers your question. Please let me know if there is any other information that I can provide.

Best wishes,

Erin Fonville, Senior Natural Resource Specialist
Chelan County Natural Resource Department

316 Washington Street, Suite 401
Wenatchee, WA 98801

O: 509.667.6324 C: 509.699.9016

CCNRD Website: www.co.chelan.wa.us/nr/nr_main.htm <http://www.co.chelan.wa.us/nr/nr_main.htm>

From: Gwendolyn Walsh [mailto:grendyl@earthlink.net]

Sent: Friday, April 23, 2010 4:02 PM

To: Erin Fonville

Subject: Re: "Thank You" and the Public Access Questionnaire

I am not sure if my remarks worked on your questionnaire. My concern is that on Western Northshore drive (17000-18000 addresses) there are some of those "access" streets every 4 lots. One near my home has a sewer installation in it, and the other to the East has no parking at all, and no trail. It is just a wooded lot. There is NO PARKING on any section of Western Northshore drive, as the shoulders are very limited, and used only for residential use.

Western End of Lake Wenatchee is all residential and wouldn't be appropriate for Public Access, as those Access lots are only for the folks above the Road who have homes there.

I am interested in what has been marked as "access", as you have mentioned 11 possible sites. I can't seem to find this information in

what you have sent so far, can you please clarify??

My home is at 17815 Northshore Drive.

Thanks,
Gwendolyn Walsh

on 4/23/10 9:16 AM, Erin Fonville at Erin.Fonville@CO.CHELAN.WA.US wrote:

Thanks to all that were able to attend our recent public access workshops. We had a great turn out and received some valuable input that we will be folding into the next draft of the public access plans. We plan to have follow-up meetings the end of May and will send you all an e-mail when we have scheduled them.

If you were unable to attend and would still like to provide us with your comments, please fill out the attached questionnaire and return to me either by email or postal mail.

I also have extra hard copies of the County and Cities Preliminary Draft Public Access Plans with full color 11x17 maps attached. You can either stop by our office to pick them up or I can drop them in the mail for you.

Best wishes and Happy Apple Blossom,

Erin Fonville, Senior Natural Resource Specialist
Chelan County Natural Resource Department

316 Washington Street, Suite 401
Wenatchee, WA 98801

O: 509.667.6324 C: 509.699.9016

CCNRD Website: www.co.chelan.wa.us/nr/nr_main.htm <http://www.co.chelan.wa.us/nr/nr_main.htm>

4/29/2010

Erin Fonville

From: Erin Fonville
Sent: Tuesday, April 27, 2010 3:28 PM
To: 'Michael Stanford'
Subject: RE: Public Access
Attachments: _Public_Access_initial_study_041510_pdssubmit.pdf; LWenandFishL_publicaccessmap.pdf
Michael,

Attached is a copy of the preliminary draft public access for Chelan County and the related maps for the Lake Wenatchee and Fish Lake Area (from appendix A). If you would like the rest of the appendixes B-E they can be downloaded from our ftp site, by following the instructions pasted at the bottom of this e-mail.

We held two workshops last week, one in Chelan and one in Wenatchee. At this time we do not plan to have a meeting in Lake Wenatchee specifically. The one in Chelan was held at the request of the City of Chelan because they have a moratorium on development because of the public access issue.

We have heard similar comments from other residents at both Lake Wenatchee. There have been a lot of questions about the County ROW access points at Lake Wenatchee and the one that was marked on the Fish Lake Map. I spoke with the Alpine Tracts HOA and we will be removing that access point from our plan and maps since it is on private. The problem as you mention below with Fish Lake is that most of the shoreline access to the lake is either owned by the Forest Service which only provides walk-in traffic or by private landowners. While the Cove is the only real place to launch a boat unless you are part of the Alpine Tracts development which has a community access point. My understanding is that the Forest Service has no intention of creating boating access to the lake on their property since they already have a concessionaire (the Cove) that operates on the lake. I know the Hideaway was closed down because of water quality issues and even if someone where to upgrade their system to bring them in compliance there still would be no true public access to Fish Lake.

On Lake Wenatchee there are some County ROW access points but at this time none of them have been surveyed or are marked on the ground. Many of them are too steep to provide safe access or have been "taken over" by the adjacent property owners. The County has no intention at this point to develop the access points but has identified them as potential future opportunities.

I hope this information answers your questions.

Ftp Site Download Instructions:

1. Open the "Windows Explorer" Program on your computer. For PC users it is usually under the Start Button (on the bottom right hand side of your screen). Then click on "All Programs" and then "Accessories" and then finally "Windows Explorer"
2. Once in Windows Explorer, type in the ftp site address: <ftp://nrp:nrprox!!@63.135.55.71> into the address bar at the top of the window explorers page, and press the enter button.
3. This will pop-up another window asking you to log on.
User id: nrp
Password: nrprox!!
4. Once you have entered the username and password you will see a bunch of file folders appear. Double click on the file folder for "Shoreline Master Program" and then "Public Access Planning". All of the information is located in the April 2010 Workshop folder.

Erin Fonville, Senior Natural Resource Specialist
Chelan County Natural Resource Department
316 Washington Street, Suite 401

4/29/2010

Wenatchee, WA 98801
O: 509.667.6324 C: 509.699.9016
CCNRD Website: www.co.chelan.wa.us/nr/nr_main.htm

From: Michael Stanford [mailto:emtstanford@gmail.com]
Sent: Monday, April 26, 2010 9:56 PM
To: Erin Fonville
Subject: Public Access

Hello I had seen short article about Shoreline access on lake Wenatchee and Fish lake on Lakewenatcheeinfo.com.

I had a few questions,

Is there a link that allows us to veiw the actual plan you have? I also saw there was a meeting in Chelan, will there be a meeting near lake Wenatchee?

as for comments on the issue, living near both Lake Wenatchee and Fish lake for 26 years, there has never been true public access to Fish Lake other than the Cove Resort which is still not 100% public, I beleive it is Federal land leased out to a private company. One of the biggest issues over the years is having no access to Fish Lake for fishing, boating, etc...

Lake Wenatchee has the state park and Glacier Veiw campground as the only public access and as usual you must pay to even park there. plus it's very crowded in the summer months and launching a boat is tough with all the people.

Also I know of one public access point that is being maintained by a private land owner on Lake Wenatchee, it is not defined as public access even though it is public land. Im sure there are many more peices of land that are being used and closed off by private homes.

I thank you for your time and any info about what plans you have would be great.

Michael Stanford

lake Wenatchee

4/29/2010



Chelan County
Natural Resource Department

316 Washington Street, Suite 401
Wenatchee, Washington 98801
phone (509) 667-6533 fax (509) 667-6527

website: http://www.co.chelan.wa.us/nr/nr_main.htm

April 29, 2010

Attn: Mr. James Deno
Deno Millikan Law Firm, PLLC
3411 Colby Avenue
Everett, WA 98201

RE: Chelan County Shoreline Master Program Update

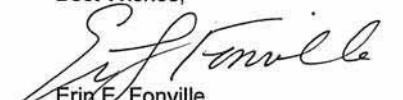
Dear Mr. Deno,

The Chelan County Natural Resource Department recently held two community workshops on April 21 & 22, 2010 to collect public input on the Preliminary Draft Shoreline Public Access Plan for Chelan County- *Initial Study* (April 15, 2010). The plan incorrectly identified a vacant parcel (designated as Community Tract "E" on the Fish Lake Alpine Tracts Plat Map) located in the Alpine Tracts subdivision as a "potential ROW access" point on map 25 of Appendix A, Public Access Inventory Maps. The plan also references the above access point in Table 13 on page 22.

The vacant parcel was identified in a ROW analysis that our consultant developed to look at potential public access to the shorelines. The analysis focused on GIS data from the Chelan County's Assessors Office to identify vacant parcels along street ends within the shoreline jurisdiction as potential ROW access points. After speaking on the phone with Bill Freist last Friday, April 23rd it was brought to our attention that the access point is on private land. We will be removing the access point from our map and the plan.

I have enclosed a copy of the Preliminary Draft Shoreline Public Access Plan for Chelan County- *Initial Study*, as well as the related map above. If you have any further questions or need more information please feel free to contact at 509.667.6324 or by email at erin.fonville@co.chelan.wa.us.

Best Wishes,


Erin E. Fonville
Senior Natural Resource Specialist

Enclosures (2)

CC: Mike Kaputa, Director, Chelan County Natural Resource Dept.
Bill Freist, President, Alpine Tracts Homeowner Association
Lisa Grueter, ICF Jones & Stokes

Thank you for your time. Please return questionnaires to:

Erin Fonville, Senior Natural Resource Specialist

Chelan County Natural Resource Department

316 Washington Street, Suite 401

Wenatchee, WA 98801

O: 509.667.6324

Erin.Fonville@CO.CHELAN.WA.US

