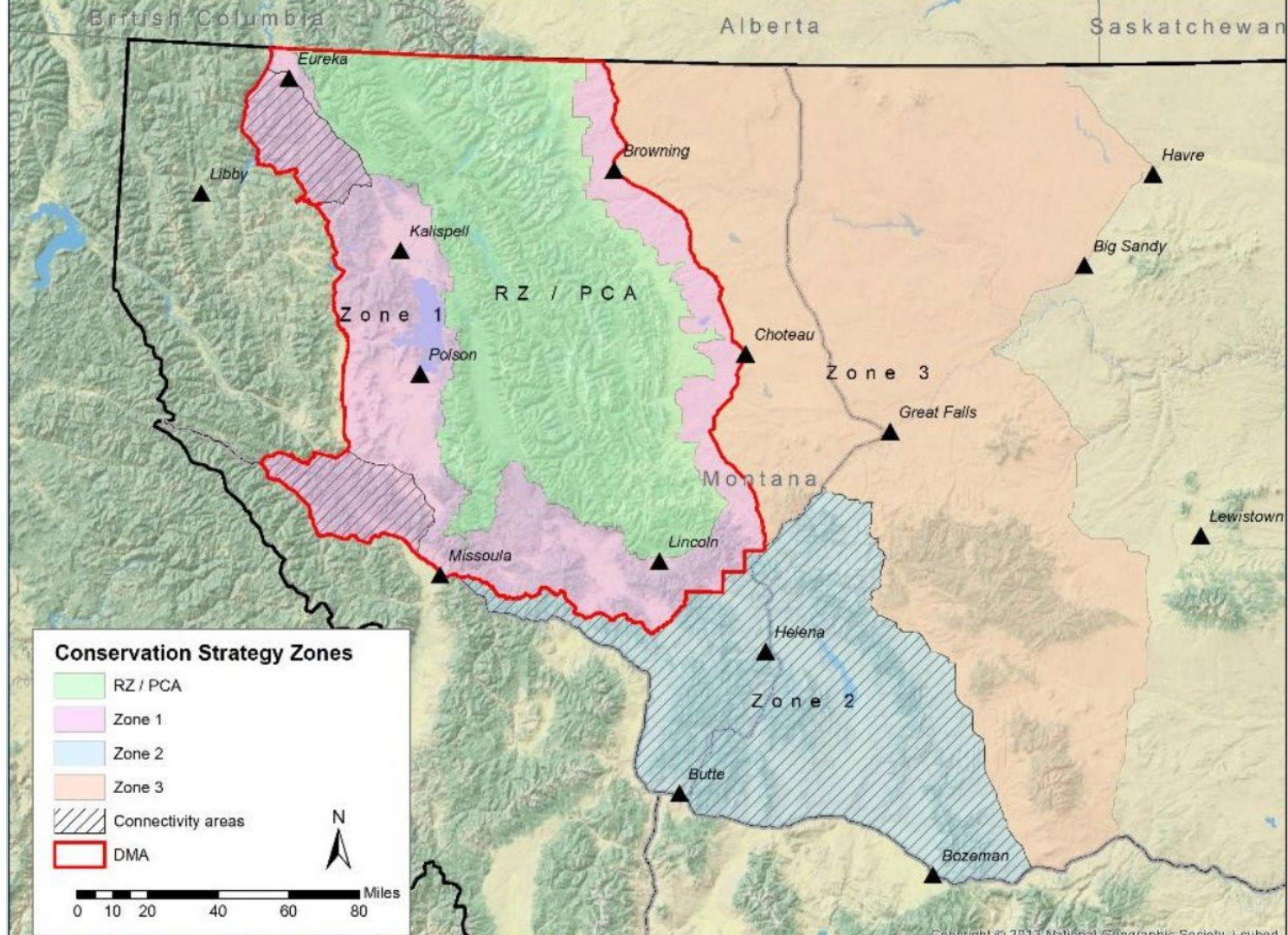




Living With Grizzly Bears

By Trina Jo Bradley







Bear meeting done for the day. Yay.



Ready or not, here I come...



ROCKY MOUNTAIN FRONT
RANCHLANDS GROUP

www.rockymountainfrontranchlands.org

A photograph showing a cowboy on a horse herding a group of cattle through a brushy landscape. The cowboy is wearing a hat and a light-colored shirt. The cattle are of various colors, including brown and white. The background shows a hilly, brushy landscape.

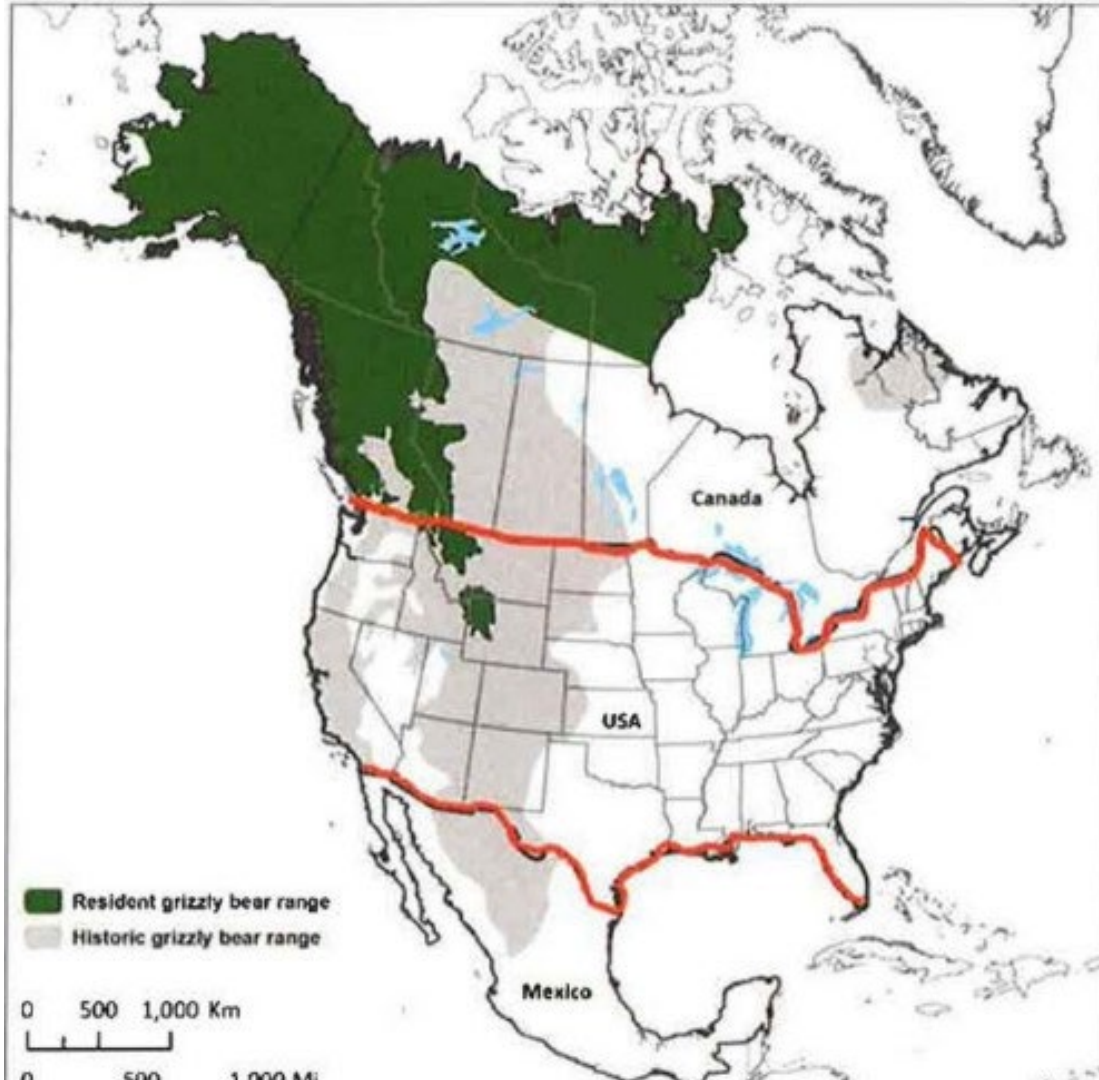
Montana Conflict Reduction Consortium

MISSION:

To reduce human-wildlife conflict and its impacts while supporting working landscapes that provide both economic viability and wildlife habitat.

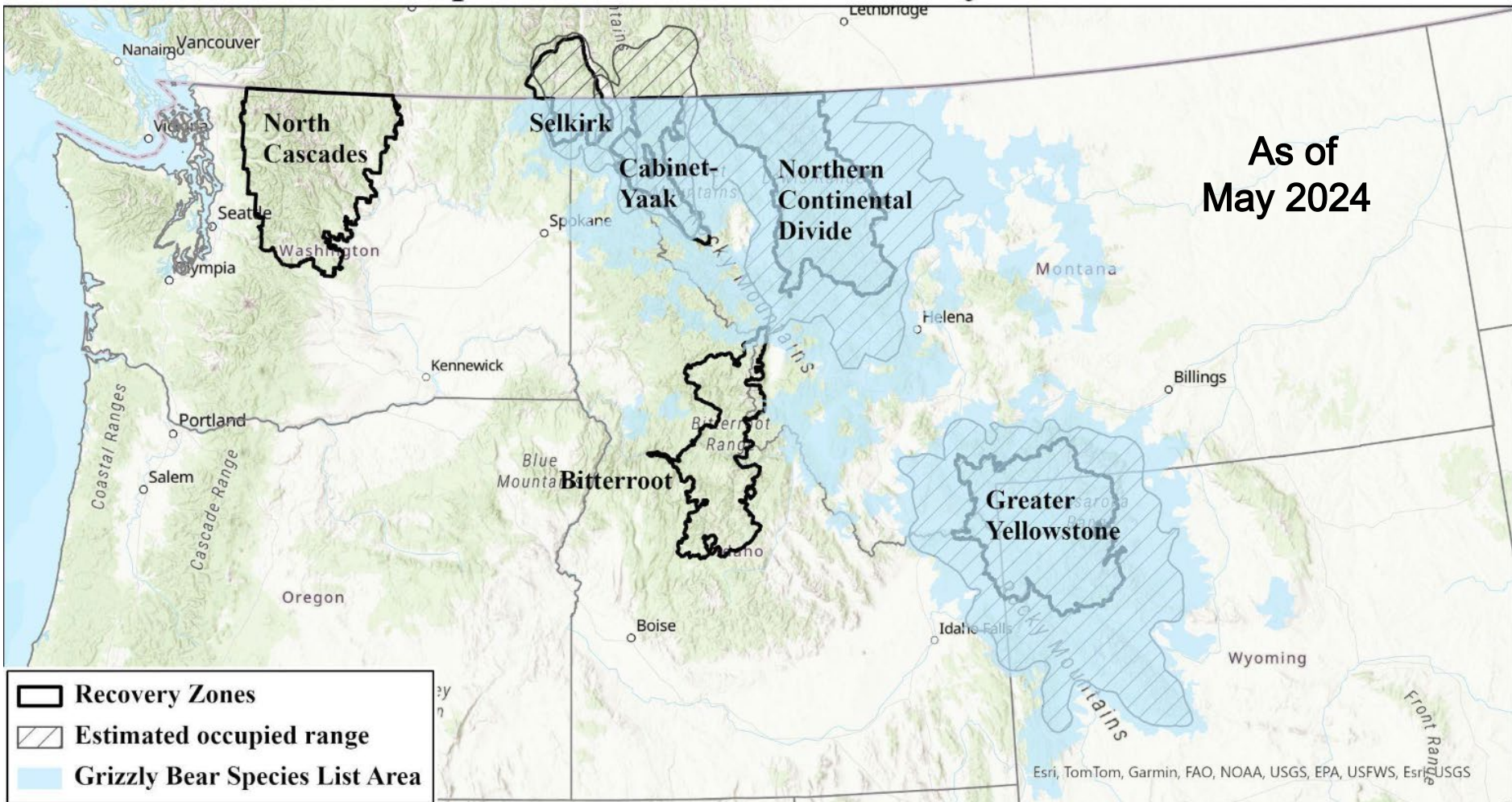
VISION:

We envision landscapes where people, livestock, and wildlife all thrive, where effective management practices reduce conflicts, and economic solutions support resilient, biodiverse working lands.



Species List Area for Grizzly Bears

As of
May 2024



MT Petition to Remove ESA Protections for NCDE Grizzlies

Montana Governor Greg Gianforte filed a petition Dec. 17, 2021 to remove ESA protections for grizzlies in the NCDE.



WY Petition to Remove ESA Protections for GYE Grizzlies



Wyoming Governor Mark Gordon filed a petition January 10, 2022 to remove ESA protections for grizzlies in the GYE, including Wyoming, Montana, and Idaho.

ID Petition to Remove ESA Protections for Lower 48

Idaho Governor Brad Little filed a petition March 9, 2022 to remove ESA protection for grizzlies everywhere in the lower 48.



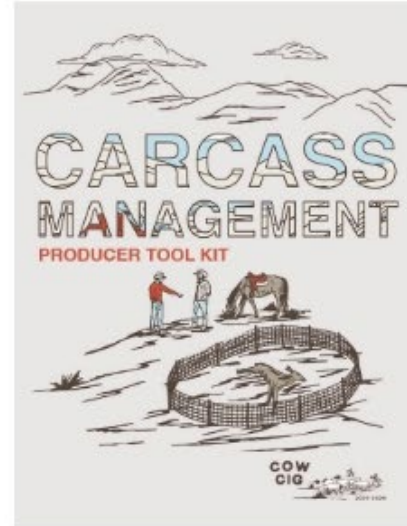
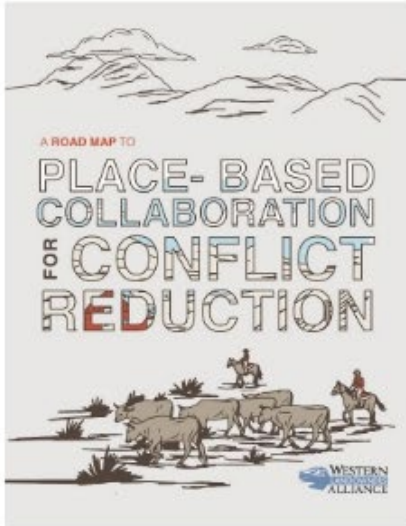
Selkirk Grizzly Bears



Washington has a small population of grizzly bears in the Selkirk Ecosystem in the northeast.

The entire Selkirk Ecosystem has an estimated population of 50-70 grizzly bears roaming between WA, ID, and BC.

Conflict Prevention Options and Resources



www.westernlandowners.org/working-wild-challenge

Range Riding



- Monitor predator activity
- Haze predators
- Monitor livestock behavior and health
- Grazing management to avoid heavy predator activity

Carcass Management

A person wearing a brown jacket, blue jeans, and a hat stands in the foreground, looking towards the camera. They are surrounded by large, dark brown piles of animal carcasses. The background shows a dry, hilly landscape under a clear blue sky.

- Remove carcasses from immediate area
- Dump sites
- Composting sites

Electric Fencing

- Chickens
- Fruit trees
- Orchards
- Yards
- Night pens
- Calving lots



Livestock Guardian Dogs

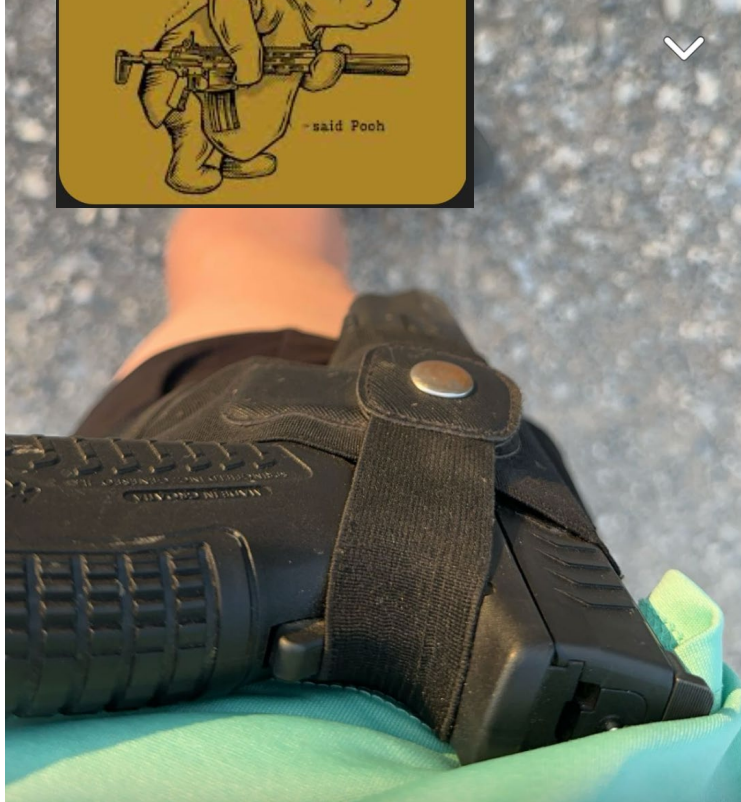
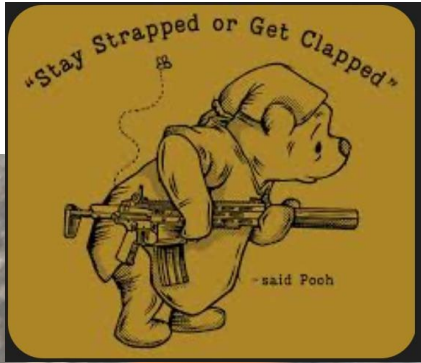


Sanitation/Attractant Containment

- IGBC approved trash cans and dumpsters
- Store trash and other attractants in secure locations
- Bear resistant grain bin doors



Surviving in Bear Country



**Be
Aware
Always**



Place - based Collaboratives

- Washington Cattlemen's Association
- Watershed groups
- Local livestock associations
- Community groups
- Potential WA CRC
- Bear Smart Communities
- Bear Wise Communities





www.igbconline.org

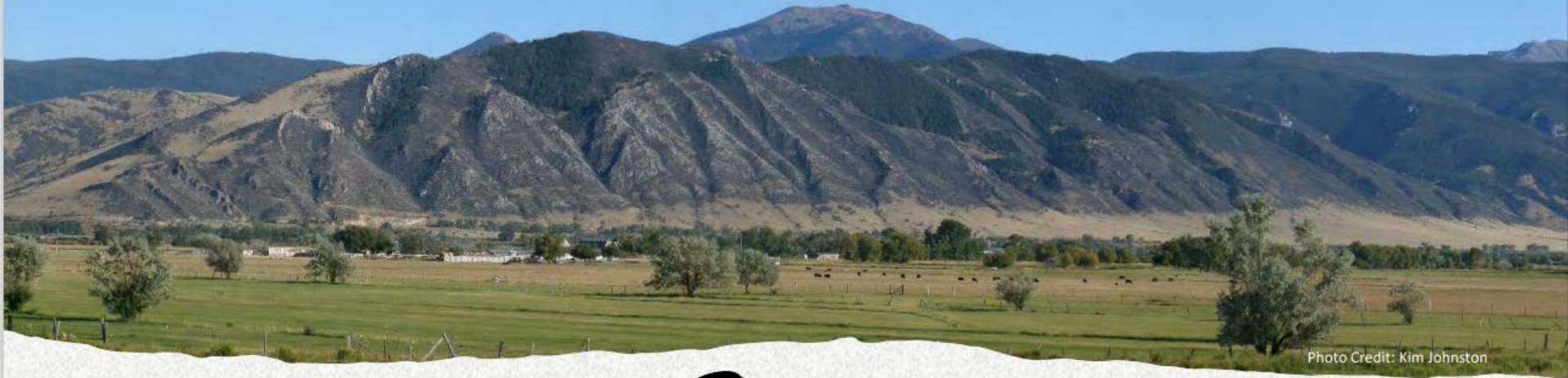


Photo Credit: Kim Johnston

IGBC Bear Smart Community Framework

The overall goal is to support collaborative community-based strategies that benefit both people and bears by reducing conflicts and improving human safety in areas where people and bears share the landscape.



ASSOCIATION of
FISH & WILDLIFE
AGENCIES

BearWise is an education and outreach program founded, supported and funded by state wildlife agencies.

Conflict Prevention Resources

**EXPANDING HUMAN-GRIZZLY
BEAR CONFLICTS - THE SITUATION,
CHALLENGES, AND SOLUTIONS**



MONTANA CONFLICT REDUCTION CONSORTIUM
CONFLICT REDUCTION CONSORTIUM

WESTERN
LANDOWNERS
ALLIANCE

- WDFW Landowner Services Division
- State Legislators
- Defenders of Wildlife Electric Fencing Incentive Program
- Coast to Cascades Grizzly Bear Initiative
- Washington Sierra Club Wildlife Committee



Scan QR Code
For More
Information



Trina Jo Bradley
trinajobradley@yahoo.com
www.rockymountainranchlands.org

questions?

