

Chelan County Official Local Voters' Pamphlet

November 5, 2024 General Election



Voters should receive their General Election ballot by October 22.

This pamphlet contains all races and issues that are on the ballot for this election. Your ballot will contain only the races and issues that you are eligible to vote on based on where you live.

You don't have to vote the entire ballot. You can leave any contest or issue blank if you are uncertain or don't feel informed enough to make a decision. Don't worry, we'll count every vote you marked.

Table of Contents

Voter Resources

About the November 5, 2024 General Election 2

Drop box locations 2

Register to vote 3

Vote center 4

Voter services 4

Accessible voting 4

How to vote 4

How are ballots processed 12

Check your ballot status 13

Your signature matters 14

Candidate Statements

Chelan County Commissioner District 1 5

Chelan County Commissioner District 3 6

Chelan County District Court Judge Position 2 7

Chelan County PUD Commissioner District 2 8

Chelan County PUD Commissioner District A 9

Ballot Measures

City of Chelan Transportation Benefit District 10

First District No. 8 11



CHELAN COUNTY
~ ELECTIONS ~

www.Elections.ChelanCountyWa.gov
elections@co.chelan.wa.us
350 Orondo Ave, Level 3 Ste 306
Wenatchee, WA 98801
509-667-6808

Local Voters' Pamphlet Statements

Statements are printed exactly as submitted. No spelling, grammatical or other corrections have been made.

The Chelan County Auditor's Office does not confirm that the statements printed are true or fact. The candidate or campaign committee is responsible for content.
RCW 29A.32.210-280



Who donates to campaigns?

View information on financial contributors for federal candidates:
Federal Election Commission
www.fec.gov
Toll Free 1 (800) 424-9530

View financial contributors for candidates and measures:
Public Disclosure Commission
www.pdc.wa.gov
Toll Free 1(877) 601-2828

If a primary election was held for an office, the two candidates who received the most votes in the Primary advanced to the General Election.

Each candidate for partisan office may state a political party that he or she prefers. A candidate's preference does not imply that the candidate is nominated or endorsed by the party, or that the party approves of or associates with that candidate.



The election for President and Vice President is different. Candidates for President and Vice President are the official nominees of their political party.

VOTING IS EASY!

1 VOTE

Follow the ballot instructions to mark your choice.

2 SIGN

You must sign your return envelope.

3 SEND

Your ballot must be postmarked by election day or dropped off by 8 p.m. on election day at a drop box.

Wenatchee

Chelan County Courthouse
350 Orondo Ave.
Wenatchee, WA 98801

Indoor Boxes: M-F 9 a.m.-5 p.m.
Licensing Office - Level 2
Or Elections Office - Level 3

Wenatchee Public Library
310 Douglas St.

Outdoor box: 24 hrs a day
Drive-thru access

Cashmere

Cashmere City Hall
101 Woodring St.
Cashmere, WA 98815

Outdoor Box: 24 hrs a day
Facing Mission Ave.
Walk-up access

Chelan

Chelan City Hall
135 E. Johnson Ave.
Chelan, WA 98816

Outdoor Box: 24 hrs a day
Drive-thru access
In alley next to payment box

Entiat

Entiat City Hall
14070 Kinzel St.
Entiat, WA 98822

Outdoor Box: 24 hrs a day
Drive-thru access

Leavenworth

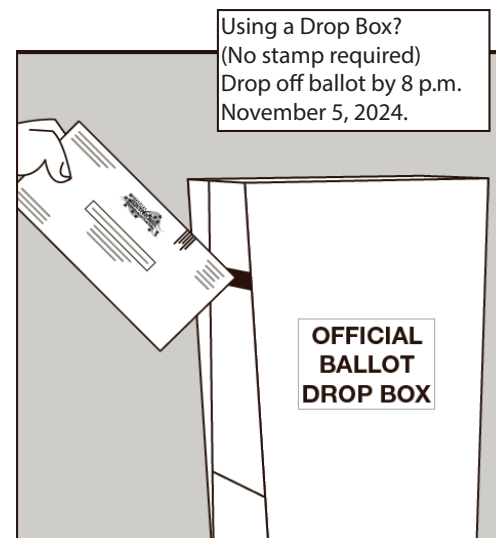
Leavenworth City Hall
700 Hwy 2
Leavenworth, WA 98826

Outdoor Box: 24 hrs a day
Drive-thru access

Manson

Manson Public Library
80 Wapato Way
Manson, WA 98831

Outdoor Box: 24 hrs a day
Walk-up access



All ballot drop box locations are closed promptly at 8:00 p.m. on November 5.

REGISTER TO VOTE

THREE WAYS TO REGISTER TO VOTE:



Online

You can register online, **24 hours a day**, at VoteWA.gov. To register in time to vote in the *General Election*, register online by **October 28**.



By mail

Download and print a registration form from VoteWA.gov and mail to Chelan County Elections. It must be received by **October 28**.



In-person

You can register to vote in-person at the Chelan County Elections Office through **Election Day, November 5**. More information about our office hours and location can be found on page 4 of this pamphlet.

VoteWA

Did you
know?

VoteWA offers an easy-to-use online voter portal where you can:

- Register to vote
- Update your address
- Track the return of your ballot
- View the voters' guide
- Find a ballot drop box near you

VoteWA.gov



Need Voter Assistance?

CHELAN COUNTY ELECTIONS VOTING CENTER

350 Orondo Ave Ste 306, Wenatchee, WA 98801

Phone: 509-667-6808

Email: elections@co.chelan.wa.us

Monday - Friday 9:00 a.m. - 5:00 p.m.
 Tuesday, November 5 9:00 a.m. - 8:00 p.m.

Voter Services:

- Register to vote
- Update voter registration
- Get a ballot and vote
- Replacement ballots for lost, damaged, or mismarked ballots
- Disability assistance - Large font, contrast, and audible ballot options
- Get a local voters' pamphlet

Accessible Voting



Chelan County Elections is committed to ensuring that all voters have the opportunity to vote a private and secure ballot.

Accessible Voting Units (AVU's) are available starting 18 days before an Election, until 8:00 p.m. on Election Day.

An AVU is a voting assistance unit that enables voters with visual impairments, cognitive/learning disabilities, illiteracy, or limited mobility to vote independently and privately.

An AVU presents your ballot on a monitor, you select choices by touching a screen, using a select wheel, or by using a tool. You can use headphones to listen to the text and prompts on your ballot. AVU's can also be fitted with sip-and-puff tools. AVU's are wheelchair accessible and screened from others to maintain privacy.



How To Vote

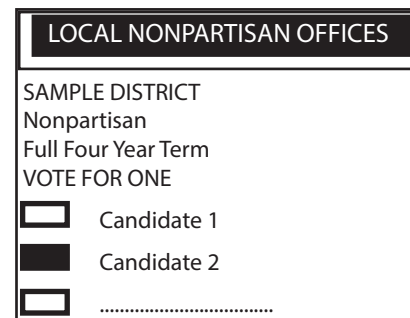
Here are a few important reminders to make sure your ballot is counted.

Mark your ballot by completely filling in the box to the left of your choice with a black or blue ink pen. If you want to vote for a candidate not appearing on the ballot, mark the box to the left of the dotted line provided to indicate your choice. Be sure to mark only one choice for each race on the ballot.

Example:

Candidate 2 has been chosen.

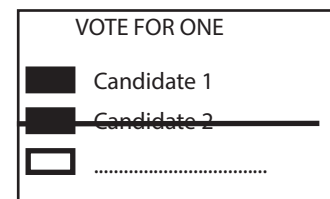
One candidate has been marked and the box is filled in completely.



Check your ballot to be sure you have voted for the candidates you intended. Make sure you mark only one response box in each race. If you mark more than one, your vote in that race will not be counted. Your other votes will be counted if they are done correctly. Leaving an office blank will not invalidate your ballot.

If you make a mistake marking your ballot, draw a line through the incorrectly marked choice as shown. You then have the option of marking another choice.

Please do not use white out.



To vote for a candidate not listed for that race, fill in the box to the left of the dashed line and print the name of the candidate.





Kevin Overbay

(Prefers Republican Party)

Elected Experience

Elected as Chelan County Commissioner, District 1 (2016)
Re-elected Chelan County Commissioner, District 1 (2020)

Other Professional Experience

Homeless Housing Task Force (Chairman), Chelan Douglas (CD) Health District (Former Chairman), Link Transit (Former Chairman), CD Transportation Council (Former Chairman), Aging and Adult Care (Vice Chairman), Washington Counties Risk Pool (President), Washington Association of Counties Legislative Steering Committee (Co-Chairman), RiverCom (Former Chairman), Disability Board (Former Member), Air Service Task Force, Sportsplex Workgroup, Pathways Leadership Team

Contact:

(509) 670-7515 | overbay.kevin@gmail.com
PO Box 2805 Wenatchee, WA 98807

Education

Community College of the AirForce; Washington State Patrol Academy

Community Service

Malaga Colockum Community Council: Chairman 2002-2012. Common Ground Housing Trust (Founding Board Member), NCW Chaplain Foundation, Greater Wenatchee Girls Softball Assoc., Our Valley Our Future (Board Member)

Statement

It has been an honor and a privilege to serve you, the residents of Chelan County, over the past seven years. I have fulfilled my promise of being your fulltime commissioner dedicated to serving all of the residents of Chelan County equally, and I am committed to continuing with that promise.

I will continue to proactively work toward finding solutions to social issues such as: substance use disorder, mental illness, and homelessness. I am working diligently, with my peer commissioners, toward addressing the future needs of our county regarding transportation infrastructure, community safety through forest health measures, supporting our law enforcement community and continuing to enhance our economy in an effort to provide opportunities for living wage jobs while reducing the tax burden to our residents. I will continue to champion against unfunded mandates from Olympia that adversely impact Chelan County residents and offer alternatives in an effort to mitigate potential negative outcomes. I am committed to continuing to work toward finding solutions to the many challenges that we currently face, all while building upon existing relationships and forging new ones in an effort to better position Chelan County to handle whatever challenges may come our way in the future.



**“It is not the hand that signs the law that holds the destiny of America.
It is the hand that casts the ballot.”**

– President Harry S. Truman



Chelan County - Commissioner District 3 - 4 Year Term



Brad Hawkins

(Prefers Republican Party)

Elected Experience

I have served 10 years on school boards, 4 years as State Representative, and 8 years as State Senator.

Other Professional Experience

North Central ESD Board, Wenatchee Valley YMCA Board, Rotary Club, and Public Utility District.

Education

Master's Degree in Public Administration from George Washington University in Washington, DC with a focus in State and Local Governments; Bachelor's Degree with honors from Central Washington University; K-12 education in the Wenatchee School District.

Contact:

(509) 393-3231 | bradhawkinsforcommissioner@gmail.com
www.bradhawkins.org | PO Box 1 Wenatchee, WA 98807

Community Service

My family has a proud history of public service, including my father Buell's two terms as Chelan County Commissioner for District 3.

Statement

I pride myself in being a good listener, sharing facts, working effectively, and getting results. I am a proud product of Chelan County and was raised in District 3. My wife Shawna and I have been married since 2002 and have two teenage boys. I hope to put my experience to work as your next county commissioner. If elected, I could serve in this position well into the future.

My priorities as county commissioner include growing our county economy, maintaining a balanced budget, promoting local tourism, and supporting our agricultural base. Our county must continue to reduce its wildfire risks, ensure adequate public safety, deliver on housing solutions, and mitigate growing property taxes. We should emphasize partnerships with city governments, maintain key infrastructure, and work together to identify transportation solutions.

As county commissioner, I will encourage our growing technology industry, support our hydroelectric resources, and enhance outdoor recreation opportunities. I've had the benefit of working with nearly all Chelan County elected officials, business groups, and nonprofits and look forward to continuing to support them as we work together to better our county. I would be honored to have your vote.



Flint Hartwig

(Prefers Republican Party)

Elected Experience

No information submitted.

Other Professional Experience

No information submitted.

Education

No information submitted.

Contact:

(509) 264-8204 | www.hartwigforchelan.com | Hartwigforchelan@gmail.com
4705 US Highway 97A Wenatchee, WA 98801

Community Service

No information submitted.

Statement

I'm not a career politician; I'm a businessman. I promise to manage public funds the same way I do in business, to make sure we're only spending money on life safety and essential roles of government, not shiny boondoggles that our children will be paying for decades to come.

Our government needs to be streamlined. The complex bureaucracy created by career politicians is hurting Chelan County. Small business is the backbone of our economy and deserves support, not obstacles. In life, you get what you reward. We are punishing productivity and rewarding vagrancy, and I want to reverse this.

Building in the county has become plagued with bureaucratic nonsense, and as a result, we have less housing. Our "Community Development Department" should do just that—help the community develop.

A vote for me is a vote for sound economic practices, and a return of customer service to the county. Don't count on me for bread and circuses. You can count on me for life safety and essentials. The power and responsibility lie with "We the People." Let's get this thing turned around!

Chelan County - District Court Judge Position 2 - 2 Year Unexpired Term



Jay Eyestone

(Nonpartisan)

Judicial/Legal Experience

Currently: Kottkamp, Yedinak & Esworthy PLLC, serving as a public defender for City of Wenatchee, conflict public defender for Douglas County, and attorney in private practice including civil litigation and estate planning. Formerly: experienced prosecutor as Deputy District Attorney, Jefferson County, Oregon; law clerk at the Oregon Department of Justice; public defender at Deschutes Defenders, A Public Defense Nonprofit; and private practice attorney at Donahue Law Firm LLC.

Other Professional Experience

Sergeant, Army National Guard, honorably discharged; Youth Treatment Specialist, Chehalem Youth & Family Services.

Education

J.D., Lewis & Clark Law School; B.A. in English, George Fox University.

Community Service

Little Bruins big brother/sister program.

Statement

Chelan County deserves judges who are fair, balanced, and committed to service. As a former servicemember, I know the value of integrity and courage, and will fairly follow the law without regard for personal interests. My actions as judge will be guided by balanced experience as an attorney, public defender, and prosecutor. My commitment to serving our community is inspired by my commitment to my wife and two young sons.

Every case is important—criminal charges, small claims actions, and even traffic infractions—because someone's safety, freedom, or finances will be affected. I will be tough in guarding your Constitutional rights. I will treat each case individually: tough on crimes that harm victims or threaten community safety, but, when appropriate, offering a road to rehabilitation to those ready to change. Every side will be heard, and treated with dignity and compassion.

I am grateful to have broad support among my colleagues in the District Court legal community: attorneys who have served as part-time *pro tem* judges like John Brangwin and Andrew Melton; former prosecutors like Nicole Hankins and Sean Esworthy; and leaders in public defense like Holly Pederson Duffy and Director Jeremy Ford, Counsel for Defense of Chelan County.

Contact:

(509) 596-0872 | info@eyestoneforjudge.com

www.eyestoneforjudge.com | 403 S Millers St. Wenatchee, WA 98801



Allen F. Blackmon

(Nonpartisan)

Judicial/Legal Experience

Current Presiding Judge for Chelan County District Court; prior Chelan County Deputy Prosecutor; Highly skilled in all aspects of District Court; Allen has served you as a judge and deputy prosecutor for 28 years; Allen firmly grasps the law and closely follows the Constitution in his court; Washington born; Chelan County raised.

Other Professional Experience

Created, owned, and managed a small business.

Education

Wenatchee local schools K-12, Wenatchee High School graduate; Syracuse University College of Law, Juris Doctor; University of Washington, B.A.

Community Service

Wenatchee Valley Gang Task Force, Recovery Navigator Program, WVC Criminal Justice Advisory Committee, S.A.G.E. volunteer of the year, numerous mental health committees.

Statement

Allen has proudly served the citizens of Chelan County for 28 years as a judge and deputy prosecutor. He was raised in Chelan County and has dedicated his entire legal career to Chelan County public service and community protection. Prior to taking the bench, he protected the community as a prosecutor. As an experienced judge, Allen has a proven track record of securing equal justice for all. He strives to guarantee all decisions are firmly rooted in the law and our Constitution.

Allen has created a culture of education and fairness in his courtroom. He ensures every voice is heard, including victims, in order for justice to prevail. He imposes accountability, and seeks positive alternatives for those undergoing mental health crises when possible.

Endorsements: Allen has extensive support in our community, with leaders such as Chelan County Judges Kristin Ferrera, Travis Brandt, Lesley Allan (ret.), T.W. "Chip" Small (ret.), Alicia Nakata (ret.), Roy Fore (ret.); Chelan County Commissioners Buell Hawkins (ret.) and Doug England (ret.); City of Wenatchee Mayor Mike Poirier; City Council Members Shela Pistorosi (Cashmere), Anne Hessburg (Leavenworth); Deanna Walter; Evelyn Arnold, Shiloh Burgess, Norma Gallegos, former and current defense attorneys and prosecutors, law enforcement, and many more.

Contact:

(509) 731-4535 | retainjudgeblackmon@gmail.com

www.retainjudgeblackmon.com | PO Box 4385 Wenatchee, WA 98807

Chelan County - Public Utility District Commissioner District 2 - 6 Year Term



Randy Smith

(Nonpartisan)

Elected Experience

Chelan PUD Commissioner 2007 – present; Cashmere School Board 1977-1985

Professional Work Experience

43 years as orchardist/tree fruit production; 11 years Tree Top Board of Directors; Past President Washington PUD Association

Education

Cashmere High School Bulldog; Wenatchee Valley College (AA degree); Central Washington University (BA degree); Washington Agriculture and Forestry Leadership Program graduate

Contact:

(509) 669-6628 | randy@smithforpud.org

www.smithforpud.org | 6787 Flowery Divide Rd. Cashmere, WA 98815

Community Service

Board member NCW Community Foundation; Cashmere Rotary (past president); Past President Washington State Horticulture Society; Citizen Advocate and former chairman for Washington State University in Washington, D.C.

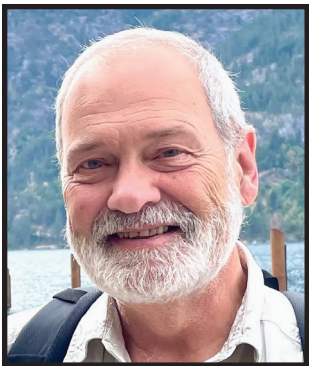
Statement

Experience does matter, that's why I am running for a fourth term as Chelan County PUD Commissioner in District 2. Our public utility is a vital treasure for the health of this community and it faces challenges from natural causes such as wildfires and dwindling snowpack, as well as increasing demand for electricity.

When I first took office, the PUD faced staggering debt; there was limited high-speed fiber network; and PUD customers had little say in how their utility was run.

Today, more than \$700 million dollars in debt has been paid off and Chelan PUD financially is one of the highest ranked public utilities in country. PUD electric utility rates are among the lowest in the US. More than 81% of county residents have high-speed internet access. And thousands of PUD customers have provided comments to let PUD commissioners know how they want their utility to operate today and into the future.

I am proud to be a part of the PUD and its hard-working commission. I want to be there for the next set of critical decisions that will shape the future and fortunes of the PUD as we provide *the best for the most for the longest*.



Steve Keene

(Nonpartisan)

Elected Experience

Peshastin Community Council 2006-Present; Peshastin Water District, Commissioner 2012-2019

Other Professional Experience

ClearView Computing: Business Owner, 1992-Present; Peshastin Water District: General Manager 2019-2024; Central Washington University: Faculty, Informational Technology Management 2013-2014; Custom Music Repair: Business Owner 1982-2000; Faculty: West Virginia Wesleyan College, Dickinson State University, Western Washington University 1979-1981; Professional Trumpet Performer: Seattle Symphony, Opera and Ballet, NW Chamber Orchestra, Tuxedo Junction, etc. 1980-2004

Education

BM & BME, University of Northern Colorado 1976; MM, Ball State University 1978

Community Service

Peshastin UGA Committee; Upper Valley Parks & Recreation; Cashmere Schools Robotics Coach; Boy Scout Leader

Statement

I moved to Peshastin in May 2004 knowing right away I wanted to become an active member of the community and help shape its future for the benefit of local families and businesses.

I joined the Peshastin Urban Growth Area Committee, working for two years to create a comprehensive plan. Along with others, I helped arrange public access to the old Peshastin Mill Site and was a member of the Upper Valley Parks and Recreation Service Area for six years. I was chairman of the Peshastin Community Council for 10-plus years and remain an active member. I became a commissioner of the Peshastin Water District in 2012, General Manager in 2019, and helped facilitate a merger with Chelan County PUD culminating in March 2024, a process that took nearly eight years.

The PUD provides essential services to our county: electricity, water, sewer, internet, and parks. I've been involved with PUD strategic planning committees since 2016 and know how mindful we must be preparing for the challenging demands ahead. I truly believe in helping provide the "Best for the most for the longest," work hard for my constituents, and hope you'll vote to allow me to serve as your commissioner.

Contact:

(509) 433-7191 | info@VoteSteveKeene.org

www.VoteSteveKeene.org | 8237 River View Rd. Peshastin, WA 98847

Chelan County - Public Utility District Commissioner District A - 4 Year Term



Steve McKenna

(Nonpartisan)

Elected Experience

No information submitted.

Professional Experience

Small Business Owner – Organizational Consultant; Public School Superintendent; Elementary Principal; Teacher

Education

Washington State University: Superintendent Certification; Gonzaga University: Master Degree - Organizational Administration; Eastern Washington University: Bachelor Degree – Education

Contact:

<https://stevemckenna4pud.com>

12490 Shore St. Leavenworth, WA 98826

Community Service

No information submitted.

Statement

I'm seeking re-election as your Chelan County Public Utility Commissioner, District A. In a rapidly changing utility environment, I am committed to the highest level of customer-owner satisfaction by providing the best value for the most people for the longest time. I believe we must invest in creating long-term value by investing in assets and people, protecting natural resources and ensuring financial stability in order to enhance the quality of life in Chelan County.

If I am a victim of a crime, can I vote safely?

Keep your voting address confidential

You may be able to enroll in the Address Confidentiality Program (ACP) and register as a Protected Records Voter if you are:

- A survivor of domestic violence, sexual assault, trafficking, stalking; or
- A criminal justice participant, election official, or protected health care worker who is a target for harassment.

To become a Protected Records Voter:

- You meet with a Certified Advocate who can assist with threat assessment, safety planning, and the program application.
- The best time to enroll is when you move or are planning to move to a location that is unknown to the offender and undocumented in public record.

Call 1 (800) 822-1065 or visit sos.wa.gov/acp.



Felony conviction?

Your right to vote is restored when you are no longer serving a sentence of total confinement in prison.



You must re-register to vote in order to receive a ballot.

You may re-register to vote by mail, in person, or online at VoteWA.gov.



Chelan Transportation Benefit District

Proposition No. 1
Sales and Use Tax for Transportation Improvements**Ballot Title**

The Board of the Transportation Benefit District, Chelan, Washington, adopted Resolution No. 2024T-001 to fund transportation improvements through a sales and use tax. This proposition authorizes a tax no greater than three-tenths of one percent (0.3%) on all taxable retail sales within the District for ten years pursuant to RCW 82.14.0455. Tax proceeds will fund projects identified in the Transportation Improvement Programs informed by the public and adopted by the City of Chelan.

For more information contact: Wade Farris | wfarris@cityofchelan.us | (509) 682-8014

Explanatory Statement

If approved by voters, Proposition No. 1 would authorize a sales and use tax of three-tenths of one percent (0.3%) for ten years beginning on January 1, 2025, to fund transportation improvements as authorized under chapter 36.73 RCW. The three-tenths of one percent tax rate equates to 3 cents on a \$10 purchase. The City of Chelan formed the Chelan Transportation Benefit District for the purpose of constructing transportation improvements identified in the City of Chelan's Six-Year Transportation Improvement Plan. State law requires that the additional sales tax revenues may only be spent for transportation improvements as identified by the Governing Board of the Chelan Transportation Benefit District. The Governing Board has identified projects from the City of Chelan Transportation Improvement Program for funding, including but not limited to road maintenance, intersection improvements, pedestrian safety enhancements, multi-use trails and emergency preparedness. This tax would be paid by anyone who makes a taxable purchase in the City, whether a resident or non-resident. Any material changes to the projects funded using sales tax revenue would require a public hearing and passage of a resolution by the Governing Board.

Additional information is available at <https://www.cityofchelan.us/tbd> or contact Wade Farris at 509-682-8014.

Statement in Favor

Do you call Chelan "*Home*", whether you have lived here all your life, or just a few years? Do you want to improve the quality of life for you, your children, or your grandchildren? Do you want our streets properly maintained and improved? Would you like our many tourists and visitors to help pay to maintain and improve our streets?

If you have answered "*yes*" to these questions, you should be in favor of this ballot measure. This measure will add .3% to our current sales tax and set the new sales tax rate at 8.7%. When dining out, a meal for two might cost \$40.00. The current sales tax is \$3.36. With this measure the sales tax would increase by 12 cents.

It is estimated this measure will generate between \$900,000.00 and \$1,200,000.00 annually for the Chelan Transportation Benefit District (TBD), approximately 65% of which would be paid by our visitors. These funds are not part of the city's general fund, and the use is restricted by law, as it can "*only*" be used to fund maintenance, construction, and operation of city roads and sidewalks, and multimodal transportation, like biking and walking paths and trails.

Dan Boon | (360) 808-7922 | danmboon@gmail.com

Statement in Opposition

This sales tax will increase the cost of everyday purchases, adding to the financial strain on households already facing high costs. Before supporting this tax, we should critically evaluate whether these projects represent our interests as a community. Previous traffic revisions have been very polarizing and made local residents feel unrepresented. Once the tax is in place, there is little recourse to remove it until it expires.

I implore all voters to review the Six-Year Transportation Improvement Plan before casting your vote on this measure.

Gabriel Boghosian | (510) 717-3978 | chelanballoter@gmail.com

PROPOSITION NO. 1**AUTHORIZING REGULAR PROPERTY TAX LEVY FOR CAPITAL REPLACEMENT AND VOLUNTEER SERVICES****Ballot Title**

The Board of Fire Commissioners of Fire Protection District No. 8, Chelan County, Washington, adopted Resolution No. 2024-1 concerning a proposition to continue funding the replacement of CAPITAL EQUIPMENT and the support of VOLUNTEER SERVICES. Under this proposition, a property tax levy of \$0.95 per \$1,000 of assessed valuation would go into effect in 2025. The dollar amount of this 2024 levy would be used for the purpose of computing the limitations for subsequent levies under RCW 84.55.050.

For more information contact: (509) 784-1366 | ccfd8@hotmail.com

Explanatory Statement

No statement submitted.

Statement in Favor

No statement submitted.

Statement in Opposition

No statement submitted.

How are ballots processed?

- Ballots sent through the US Postal Service are delivered from the post office by postal worker and brought directly to the Elections Office.
- Ballot drop boxes are emptied by two elections staff. Ballots are placed in sealed containers and brought to the Elections Office.
- Ballot envelopes are scanned and signatures are verified.
- The signature on each envelope is matched to the signature in the voter's registration record.
- If the signature matches it is marked as "accepted."
- If the signature is missing or doesn't match it is marked as "rejected." Voters are mailed a letter with a ballot declaration to cure the issue. This declaration must be returned with a signature matching to the signature on the ballot envelope for the ballot to move forward in the process.
- Ballots with verified signatures are then forwarded to an election team for extraction.
- The secrecy sleeves are removed from the outer envelope, separating the ballot from the voter's information on the envelope.
- Ballots are then removed from the secrecy sleeves.
- Ballots are inspected for physical damage or other potential scanning issues, such as white-out or tears.
- If a ballot is unable to be scanned, an election team will duplicate the ballot. An audit of all duplicated ballots is performed by a different election team.
- Ballots are scanned, prepared for tabulation and securely stored.
- A Random Batch Audit is completed within 48 hours after Election Day. Up to 6 batches are randomly selected and a race is chosen. All batches are hand counted and compared to the results tabulated by the machine to ensure the equipment is tabulating properly.
- Vote totals are calculated beginning at 8 p.m. on Election Night. Ballots with valid postmarks will continue to be processed and tabulated up until the day before certification.



CHECK YOUR BALLOT STATUS:

www.VoteWA.gov

During an election, track your ballot at www.VoteWA.gov. The ballot status will update as your ballot is received. Please allow 3-5 business days for your ballot status to be posted.

Ballot Status Categories:

Sent - Ballot has been marked as sent by the county (date may be in the future).

Accepted - Signature review has been completed, the voter has been credited with voting, and the ballot is accepted.

Rejection/Challenged + Challenged Reason - Signature or ballot has been challenged. The Chelan County Elections Office will contact the voter.

Challenge Reasons:

These challenge codes require action by the voter. The voter will be contacted by the Chelan County Elections Office.

Unsigned - The voter did not sign the declaration on the outside of the return envelope.

Signature Does Not Match - The signature on the return envelope does not match signature on file.

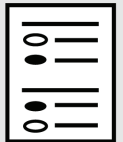
ID Required - The voter registration has failed the ID check and must provide ID before the ballot can be counted.

Power of Attorney - A Power of Attorney has signed the declaration on behalf of the voter. This is ***not allowed*** for voting purposes.

The status for this code could change during processing.

Hold - Voter returned a previously issued ballot that has been superseded. If the ballot returned is the same ballot style as the current ballot, it will be counted. If different ballot style, the ballot must be held until 7 days after Election Day.

**Has my ballot
been counted?**



**Tracking your ballot is
easier than ever!**

Sign up for text notifications when you register or update your info at **VoteWA.gov**.



Signature Verification Requirement and Cure Process

Sometimes signatures change. If that is the case, don't worry! We will send you a form to update your signature. If we have a phone number on file for you, we will also call you to remind you to return your form. Need a reminder of what signature we have for you? Take a look at your Driver's License. Many people register to vote when they apply/renew their Driver's License, so that is the signature we would have on file for you.

YOUR

Signature



MATTERS

Chelan County Elections employees are trained in signature verification. They compare your signature on the return envelope to the signature we have on file for you.

Signature challenges occur when a voter does not sign the back of the ballot return envelope or when the signature on the return envelope does not match the signature(s) in their voter registration record. Any voter with a signature challenge can fix the issue and have their ballot counted by filling out and returning a form to Chelan County Elections before the day the election results are certified.

If you would like to update your signature for future elections, simply scan the QR Code to print a voter registration form. You can mail the form back to us at the address listed on the form.




CHELAN COUNTY
~ ELECTIONS ~
350 Orondo Ave
Level 3 Ste 306
Wenatchee, WA 98801-2885



NONPROFIT ORG.
US Postage
PAID
Wenatchee, WA
Permit No. 90
ECRWSS

Residential Customer

Return your ballot by mail.

No Stamp Needed!

We recommend dropping your ballot in the mail by the Friday before Election Day to make sure it gets postmarked in time to be counted.

Mailed ballots must be postmarked by November 5.

