

# Appendix A: Figures 1 -20

Figure 1:  
Study Area  
Overview



Wenatchee launch at Icicle  
road bridge – see Figure 4 for  
more detail

Icicle launch sites – see  
Figure 4 for more detail



Wenatchee take out locations  
– see Figure 4 for more detail

Figure 2: Flows on the Wenatchee and river use seasons (2019 USGS flow data). Blue depicts the high flow spring boating season, the orange depicts the early summer falling hydrograph, yellow indicates low flow use season.

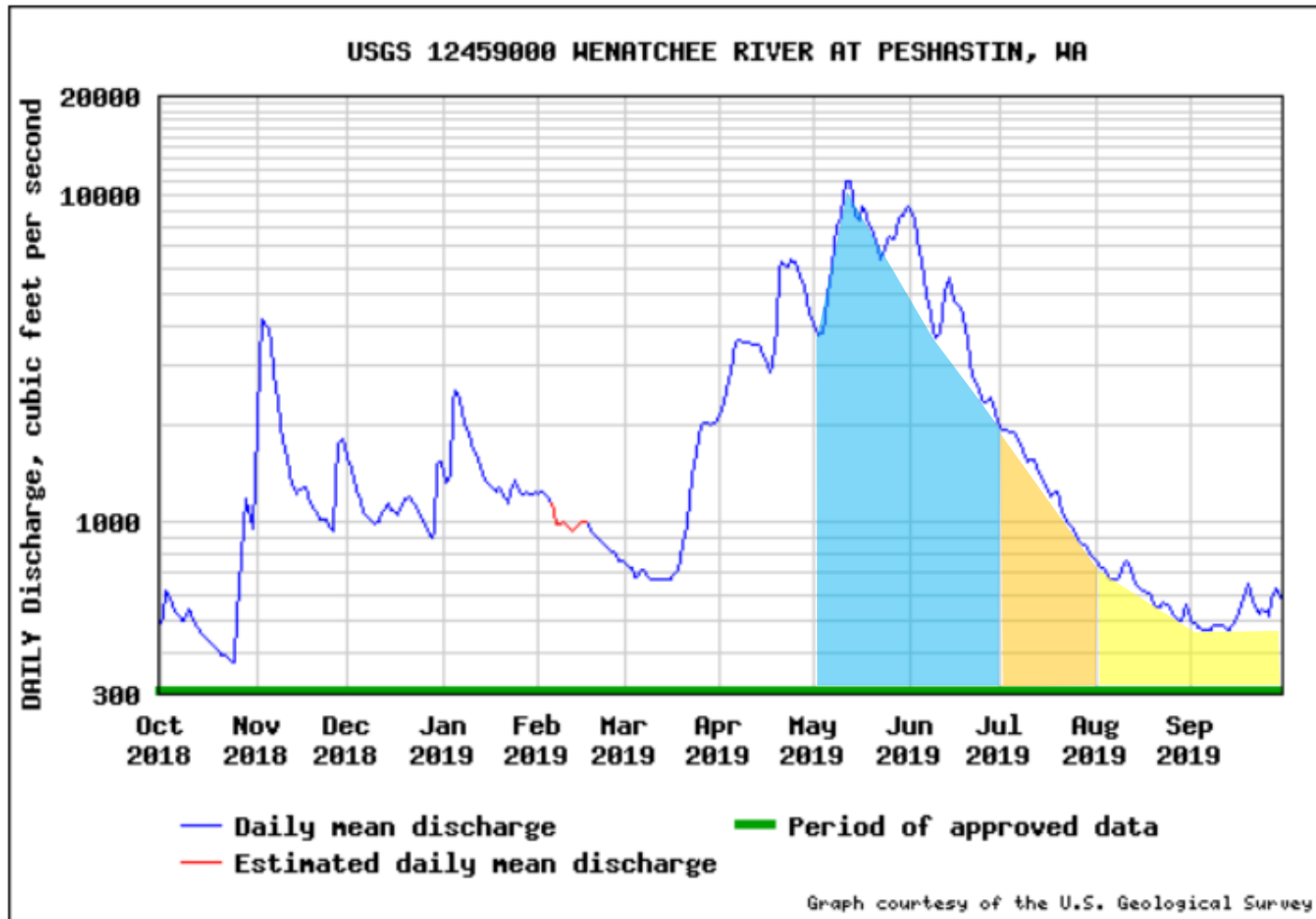


Figure 3: Flows on the Icicle Creek and river use seasons (2019 USGS flow data). Blue depicts the high flow spring boating season, the orange depicts the early summer falling hydrograph, yellow indicates low flow use season.

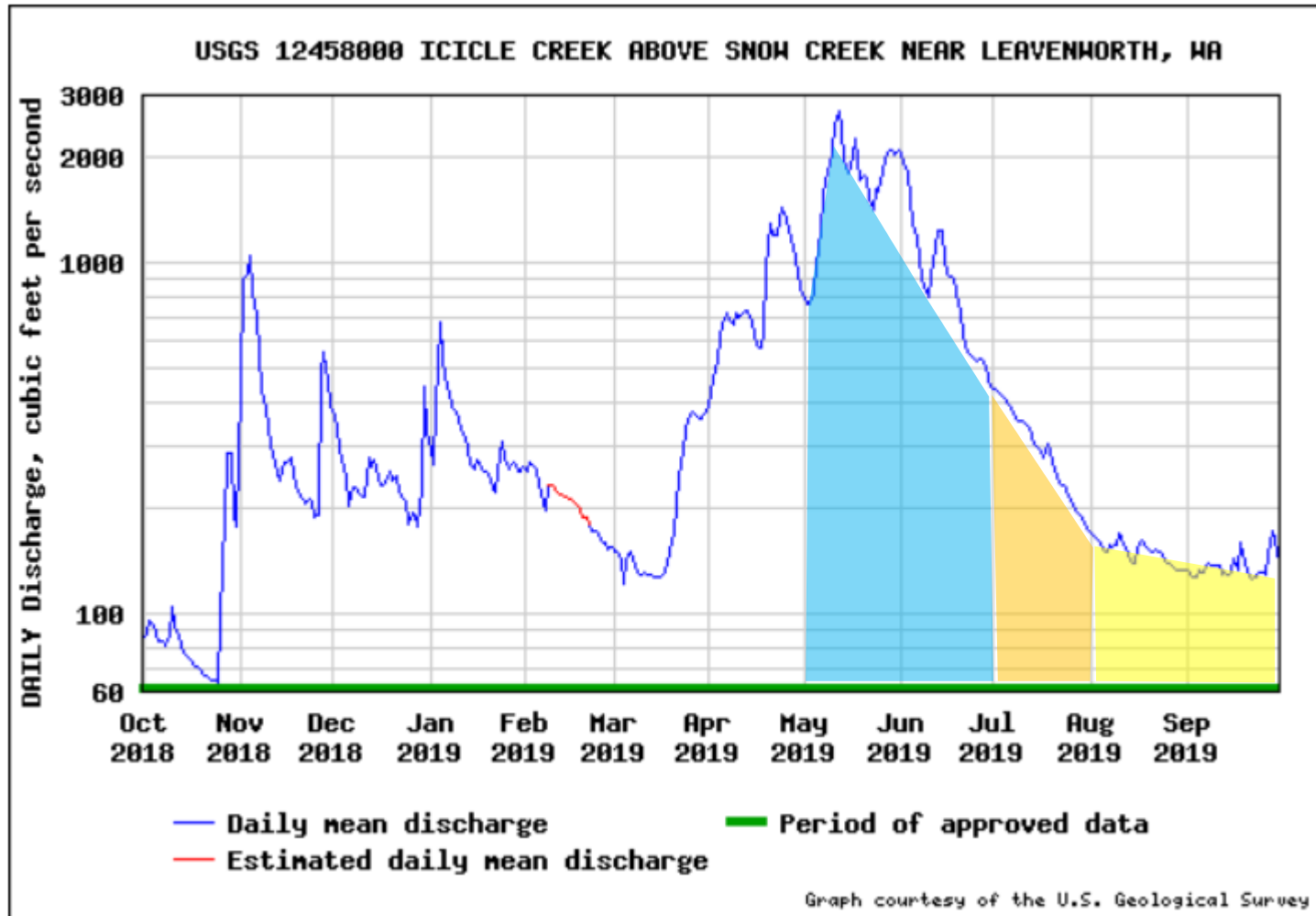


Figure 4: Launch and Take-out Sites (see text for more information about each numbered site):

Wenatchee River Launch sites

- 1. Icicle Road Bridge
- 2. End of Wilson St (private land)
- 3. Enchantment park

Wenatchee River Take out sites

- 4. End of Wilson St (private land)
- 5. East Leavenworth Road Boat Launch
- 6. Above Barn Beach

Icicle Creek Launch Sites

- 7. USFWS Fish Hatchery
- 8. End of County spur road
- 9. E. Leavenworth road bridge
- 10. Stump hole (E. Leavenworth rd)
- 11. End of Shore st



Figure 5: Categories of Survey Responders

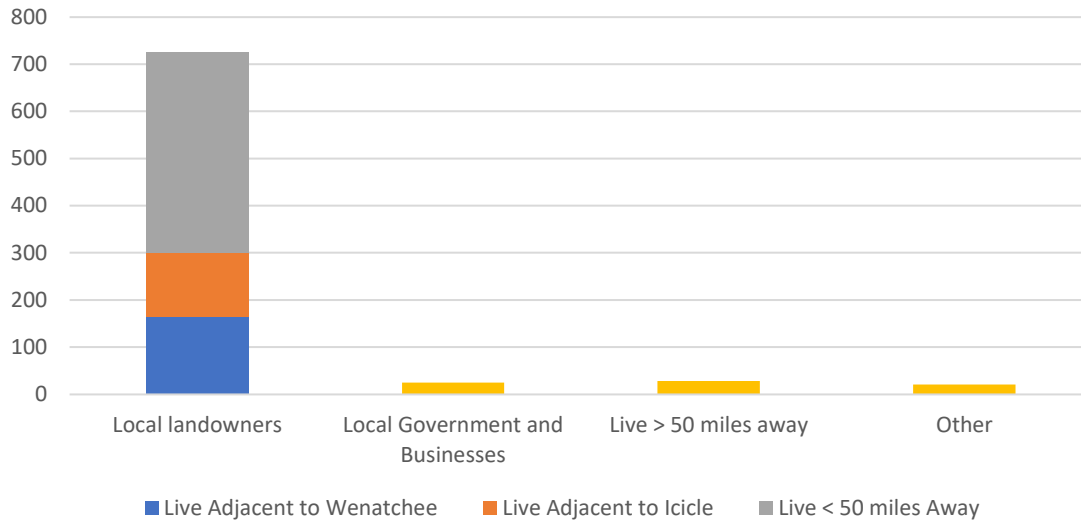


Figure 6: Do you recreate on the river within the study area?

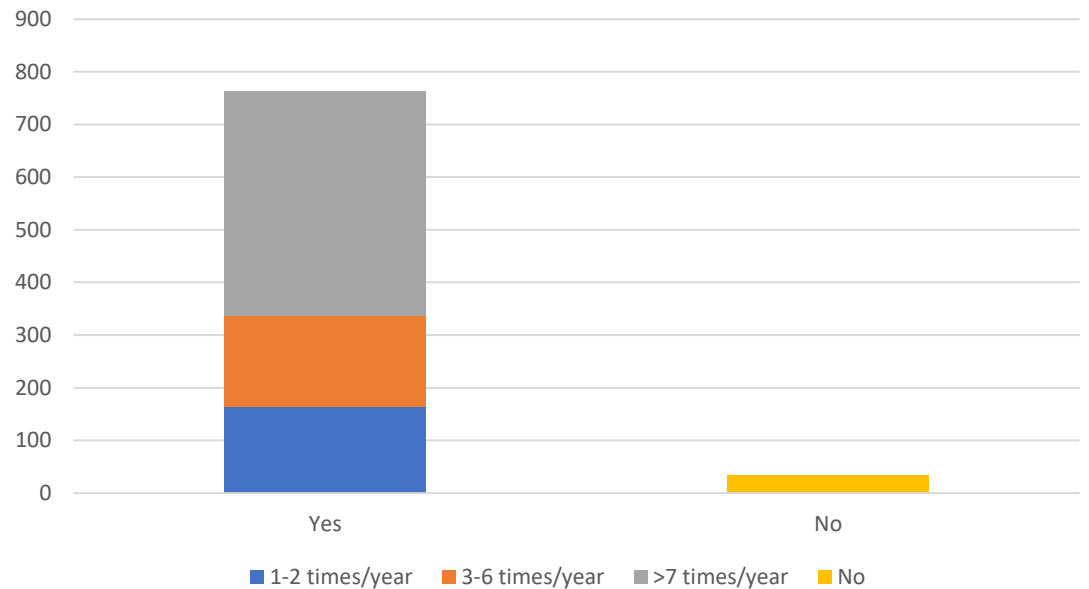


Figure 7: How do survey respondents recreate within the study area?

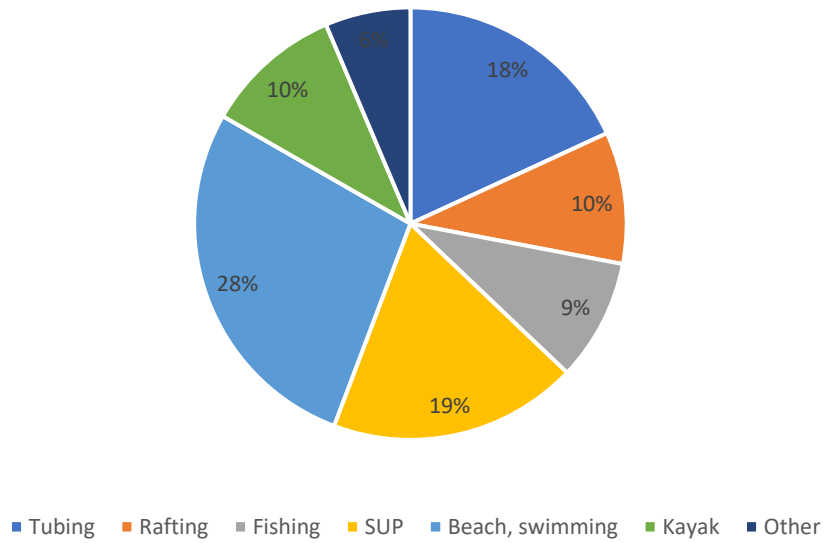


Figure 8: Do you have concerns with river recreation within the study area?

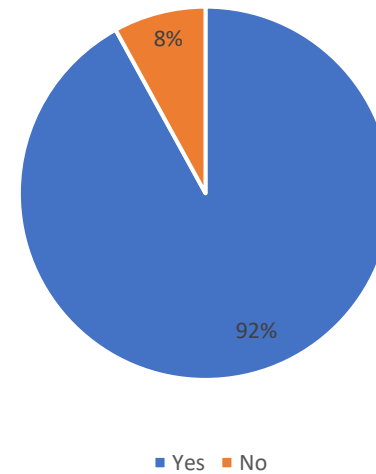


Figure 9: Number of River Users Surveyed on Icicle Creek, July 2020

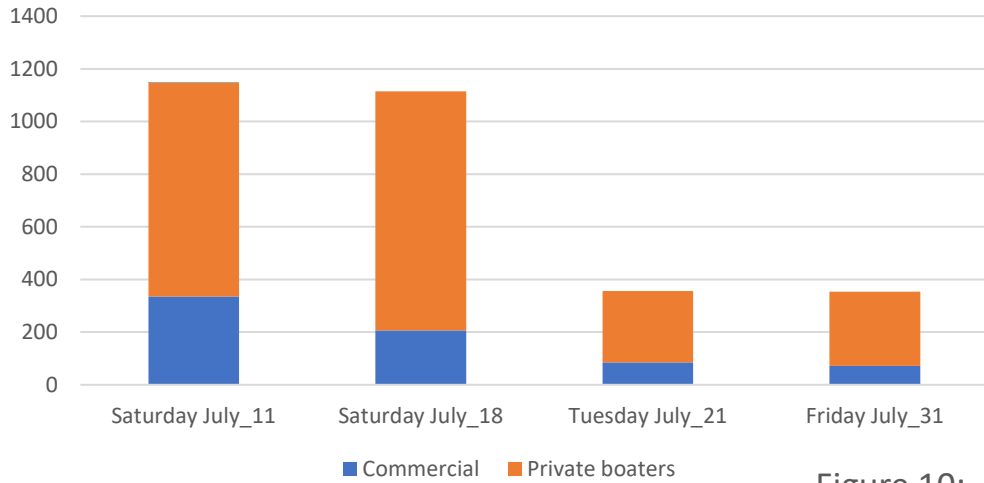
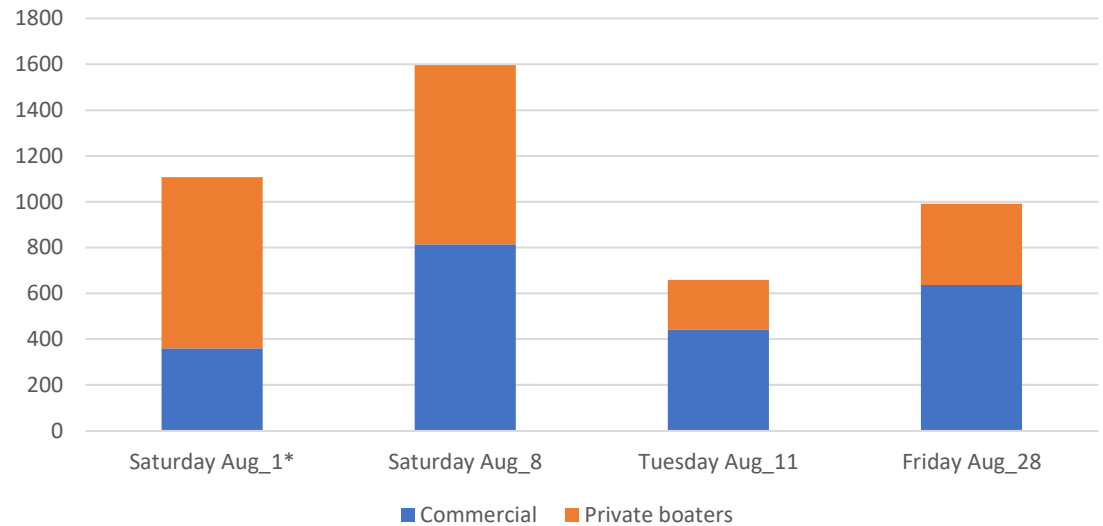


Figure 10: Number of River users Surveyed on the Wenatchee River, August 2020



\*August 1 counts are from Icicle bridge; ~ 400 more commercial users likely launched from the end of Wilson st. making numbers more similar to August 8.



Figure 11: Total number of users (N=1146) over time – Icicle Creek July 11, 2020

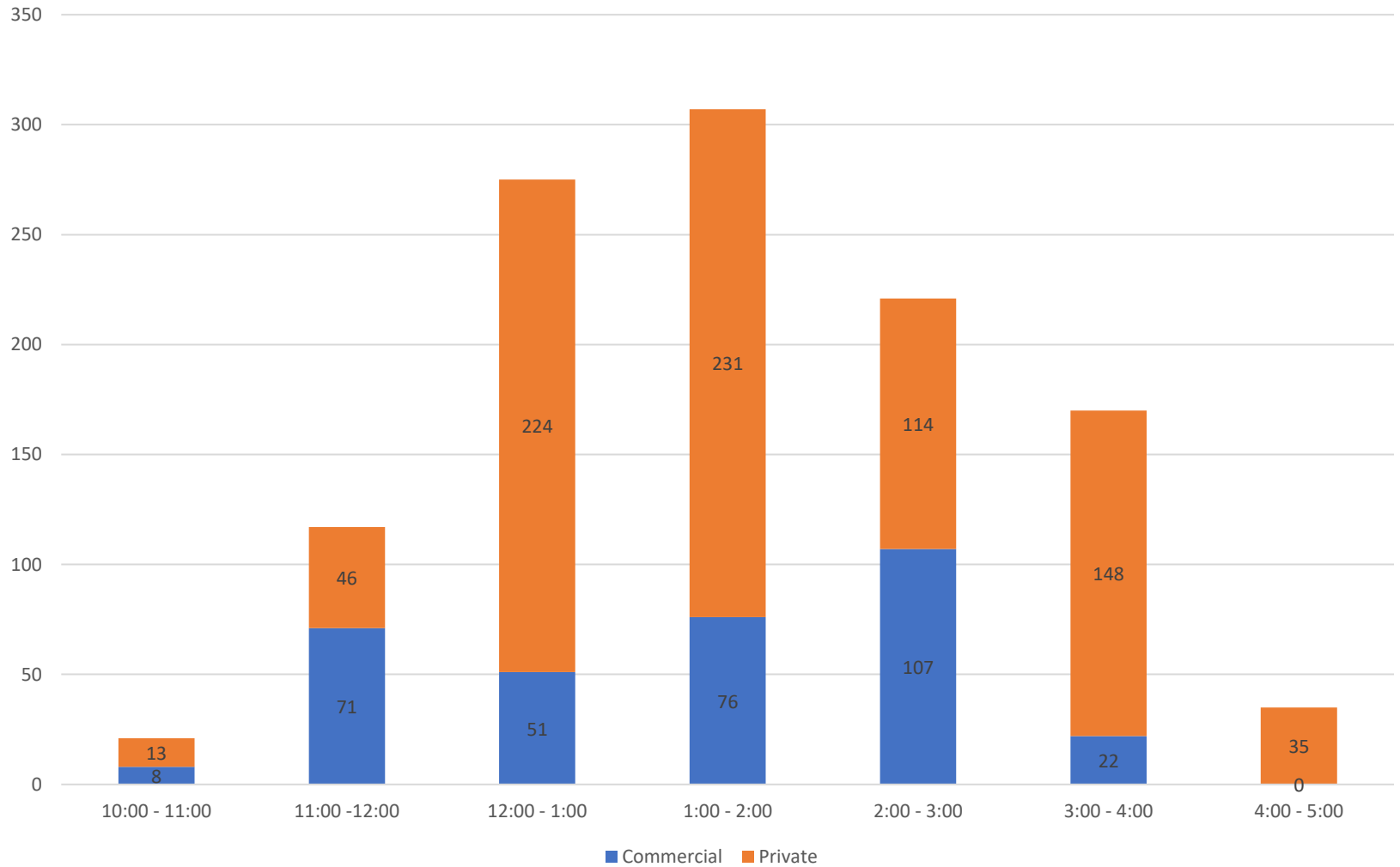


Figure 12: July 11, 2020 Private boater watercraft  
Icicle Creek N=807

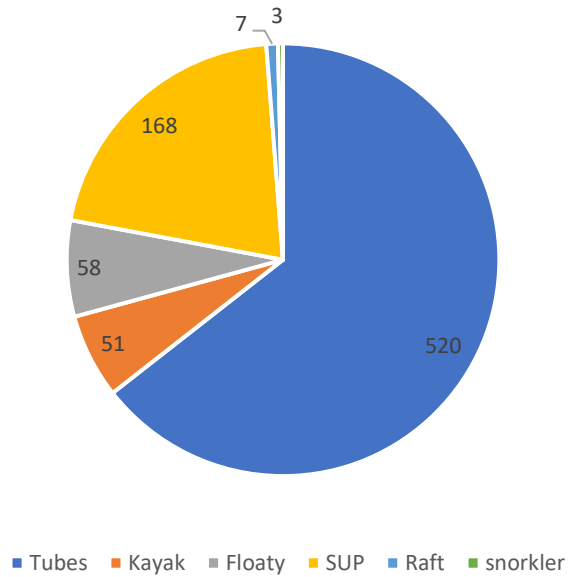


Figure 13: July 11, 2020 Commercial Boater watercraft  
Icicle Creek N=335 (46 Osprey, 289 LOC)

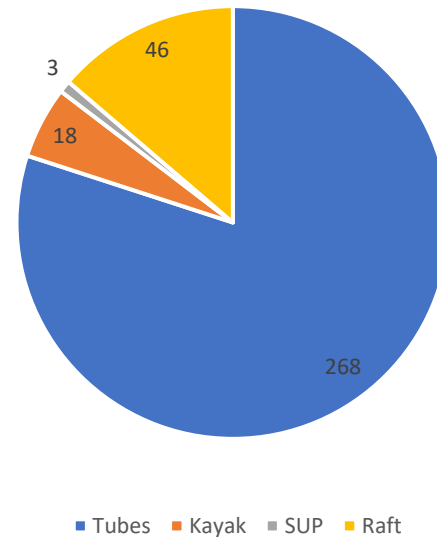


Figure 14: Private Boater PFD Use July 11, 2020 Icicle Creek

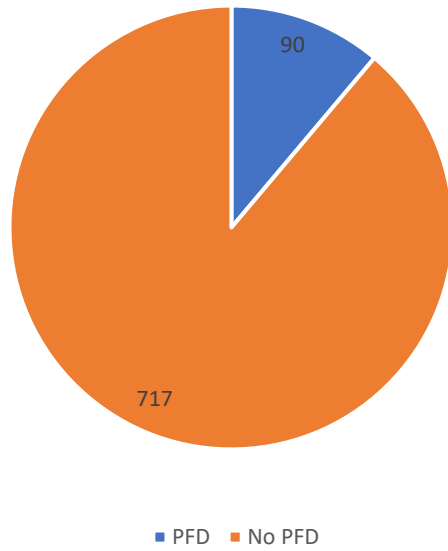
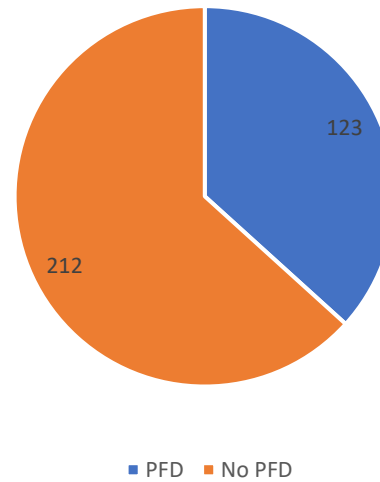


Figure 15: Commercial Boater PFD Use July 11, 2020 Icicle Creek



Home

Add Map Data

Clear Map Data

Tutorial Videos

Legend

Filter Data

Zoom To

Tools

 **Add or remove map data**

**Assessed Waters/Sediment** 

**Water**

-  Category 5 - 303d
-  Category 4C
-  Category 4B
-  Category 4A
-  Category 2
-  Category 1

**Sediment**

-  Category 5 - 303d
-  Category 4C
-  Category 4B
-  Category 4A
-  Category 2
-  Category 1

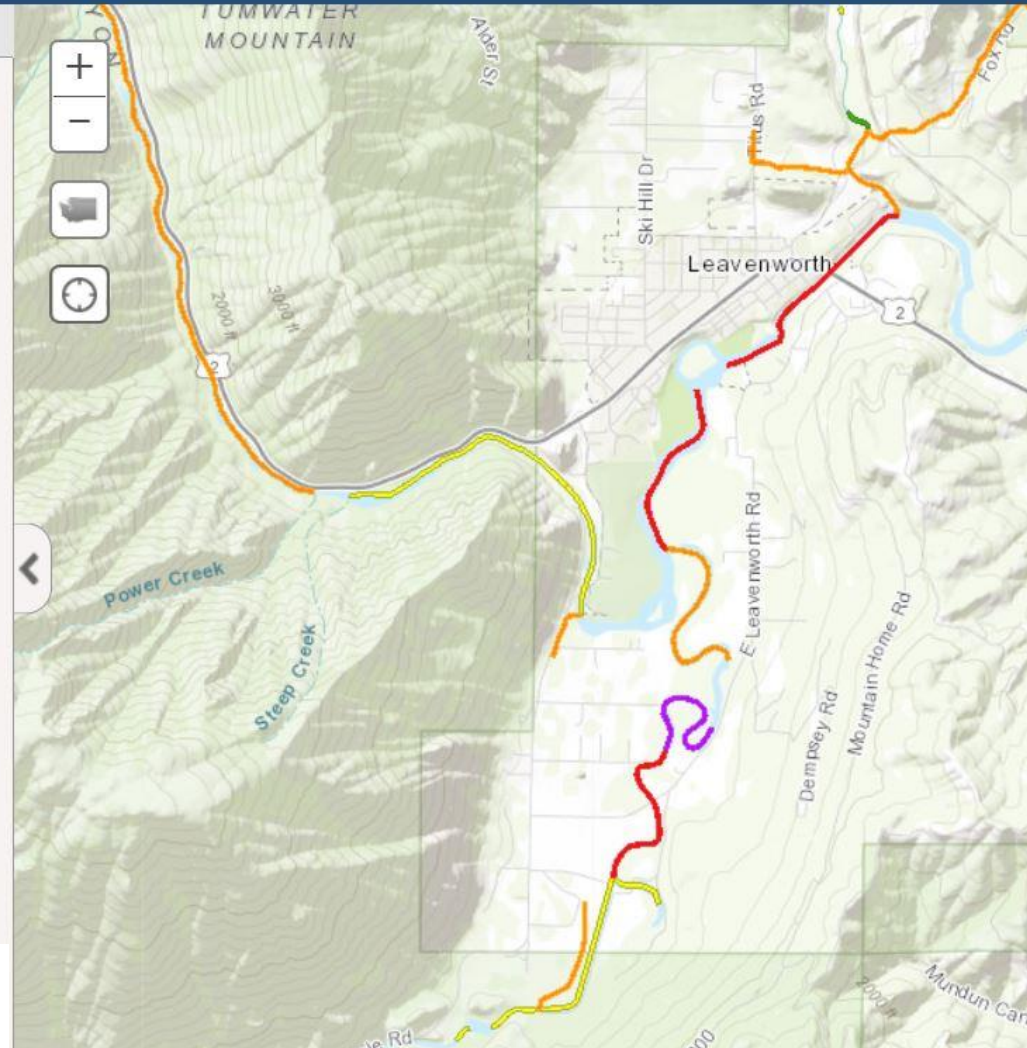


Figure 16. Water Quality Designations within the Study Area.

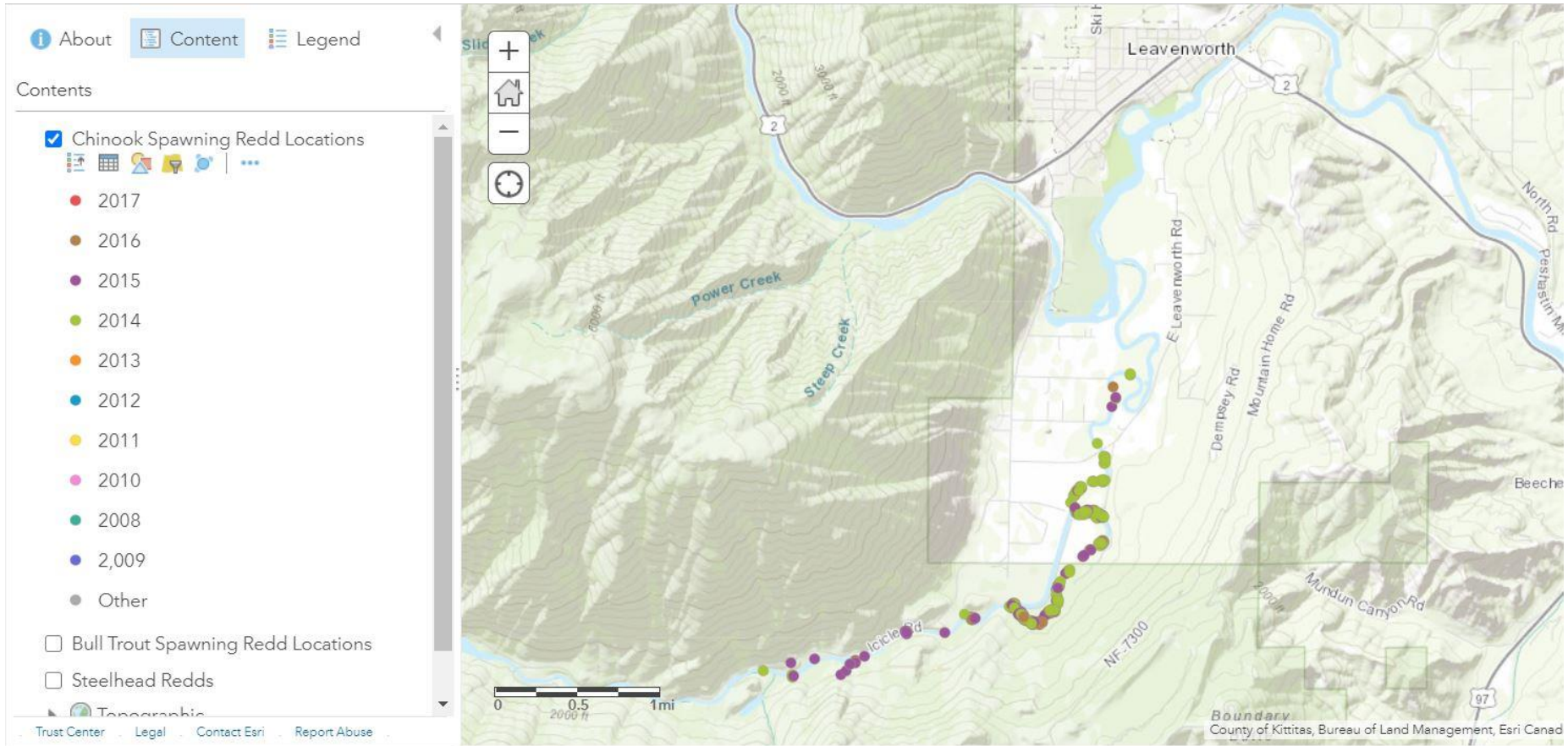


Figure 17. Chinook spawning within the Study Area. Map source: Upper Columbia Salmon Recovery Board.

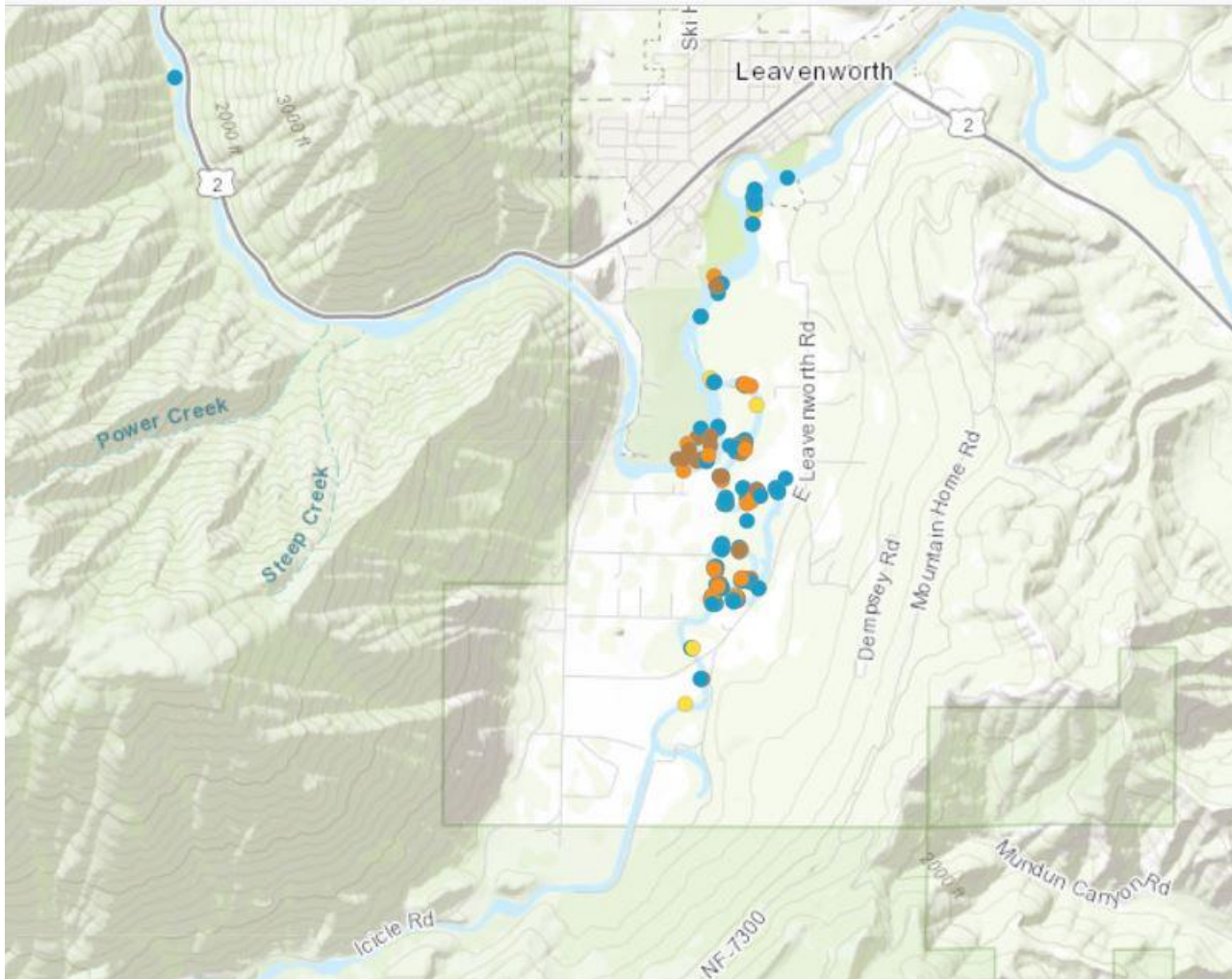


Figure 18. Steelhead spawning within the Study Area. Map source: Upper Columbia Salmon Recovery Board.

Table 2-1. Periodicity Table for Spring Chinook, Summer Steelhead, and Columbia River Bull Trout in the Lower Wenatchee River

Species	Lifestage	Jan	Feb	Mar	Apr	May	June	Jul	Aug	Sept	Oct	Nov	Dec
Spring Chinook Salmon	Adult Immigration/Holding					■	■	■	■				
	Adult Spawning												
	Egg Incubation/ Fry Emergence												
	Juvenile Rearing	■	■	■	■	■	■	■	■	■	■	■	■
	Juvenile Outmigration		■	■	■	■	■	■					
Summer Steelhead	Adult Immigration/Holding	■	■	■				■	■	■	■	■	■
	Adult Spawning		■	■	■	■	■						
	Egg Incubation/Fry Emergence		■	■	■	■	■	■	■				
	Juvenile Rearing	■	■	■	■	■	■	■	■	■	■	■	■
	Juvenile Outmigration		■	■	■	■	■	■					
Bull Trout	Adult Immigration/Outmigration				■	■	■	■	■	■	■	■	■
	Adult Spawning												
	Egg Incubation/ Fry Emergence												
	Juvenile Rearing	■	■	■	■	■	■	■	■	■	■	■	■
	Juvenile Outmigration												

Indicates periods of most common or peak use and high certainty that the species and life stage are present  
 Indicates periods of less frequent use or less certainty that the species and life stage are present  
 Indicates periods of rare or no use

Sources: EES and Payne 2005; Hillman et al. 2008, 2010, 2011, 2014; Ringel et al. 2014; UCSR 2014

Figure 19. Fish periodicity in the Lower Wenatchee. Source: Yakama Nation Lower Wenatchee Reach Assessment

Species	Life-Stage	USE		Proposed Monthly Periodicity												
		Migration	Spawning	jan	feb	mar	apr	may	jun	jul	aug	sep	oct	nov	dec	
Bull Trout	Adult/Subadult															
	Adult/Subadult Rearing															
Steelhead and Rainbow Trout	Adult															
	Juvenile Rearing															
Coho	Adult															
	Juvenile Rearing															
Summer Chinook	Adult															
	Juvenile Rearing															
Spring Chinook	Adult															
	Juvenile Rearing															
Mountain Whitefish	Adult															
	Juvenile Rearing															
Sucker Spp.	Adult															
	Juvenile Rearing															
Pacific Lamprey	Adult															
Westslope Cutthroat Trout	Adult															
	Juvenile Rearing															

Figure 20. Fish periodicity in Icicle Creek. Source: Icicle Creek Fish Passage Evaluation for the Leavenworth National Fish Hatchery. US Fish and Wildlife Service. 2013.



# Appendix B: Survey Monkey Questions

## WENATCHEE RIVER AND ICICLE CREEK RECREATION USE SURVEY

This survey is intended to document and understand river recreation use in the Leavenworth area. Questions apply to river recreation use within the study area which is the Wenatchee mainstem from the Icicle Road bridge to Barn Beach and Icicle Creek from the USFWS fish hatchery to the confluence with the Wenatchee river. Survey results will help inform future management actions. Chelan County drafted these survey questions with input from a stakeholder working group.

Fill out this paper copy and return it in the envelope provided **OR** fill out the online survey at:

<https://www.surveymonkey.com/r/FGCNY6Y>

1. Which of the following choices best describes your point of view when responding to this survey?

- Live adjacent to the Wenatchee river
- Live adjacent to Icicle creek
- Commercial river outfitter
- Government entity which owns land within the study area
- Local business
- Local (live <50 miles away) river user
- River user who lives >50 miles away
- Other - describe

2. Do you recreate on the Wenatchee River and/or Icicle Creek?

- No
- Yes, once or twice a year
- Yes, 3-6 times/year
- Yes, >7 times/year

3. How do you recreate on the Wenatchee River and/or Icicle Creek; check all that apply:

- |  |  |
|--|--|
| <input type="checkbox"/> Tubing                | <input type="checkbox"/> Beaches, swimming |
| <input type="checkbox"/> Rafting               | <input type="checkbox"/> Kayak             |
| <input type="checkbox"/> Fishing               | <input type="checkbox"/> Other             |
| <input type="checkbox"/> Stand up paddle board |  |

4. Do you have any concerns about river recreation use on the Wenatchee River near Leavenworth or Icicle Creek?

- Yes
- No

**If you answer to Question 4, then skip to Question 13. If you answer yes to Question 4, then continue to question 5.**

5. River use within the study area can generally be divided into a high-water season (May-June) and a low-water season (July – September). Please indicate whether your concerns are related to high-water or low-water river recreation use.

- I am concerned about river recreation use during high water season
- I am concerned about river recreation use during low water season
- I am concerned about river recreation during high and low water season
- I am not concerned about river recreation use in the study area

6. Please indicate whether your concerns are related to river recreation in the Wenatchee River (from Icicle Road bridge to Barn Beach) or Icicle Creek.

- I am concerned about river recreation on the Wenatchee River (from Icicle Road bridge to Barn Beach)
- I am concerned about river recreation use on Icicle Creek
- I am concerned about river recreation on the Wenatchee River (from Icicle Road bridge to Barn Beach) and in Icicle Creek
- I am not concerned about river recreation use in the study area

**If you answered Icicle Creek only, then skip to Question 10. If you are not concerned, then skip to Question 13. If you check either of the other answers, then continue to Question 7.**

7. Please list concerns that you have for launch sites on the Wenatchee River. Check all that apply.

	Parking	Bathroom facilities	Bank Erosion	Garbage	Noise	Public behavior	No concerns
Icicle Road Bridge	<input type="checkbox"/>	<input type="checkbox"/>	<input type="checkbox"/>	<input type="checkbox"/>	<input type="checkbox"/>	<input type="checkbox"/>	<input type="checkbox"/>
End of Wilson Street (Private property - river access with landowner permission only)	<input type="checkbox"/>	<input type="checkbox"/>	<input type="checkbox"/>	<input type="checkbox"/>	<input type="checkbox"/>	<input type="checkbox"/>	<input type="checkbox"/>
Enchantment Park	<input type="checkbox"/>	<input type="checkbox"/>	<input type="checkbox"/>	<input type="checkbox"/>	<input type="checkbox"/>	<input type="checkbox"/>	<input type="checkbox"/>

Other issues associated with launch sites on the Wenatchee river (please specify)

8. Please list concerns that you might have for these take-out sites on the Wenatchee River. Check all that apply.

	Parking	Bathrooms	Bank erosion	Public behavior	Noise	Garbage	No concerns
East Leavenworth Road boat launch -	<input type="checkbox"/>	<input type="checkbox"/>	<input type="checkbox"/>	<input type="checkbox"/>	<input type="checkbox"/>	<input type="checkbox"/>	<input type="checkbox"/>
Barn Beach -	<input type="checkbox"/>	<input type="checkbox"/>	<input type="checkbox"/>	<input type="checkbox"/>	<input type="checkbox"/>	<input type="checkbox"/>	<input type="checkbox"/>

Other concerns about take out sites on the Wenatchee river (please specify)

9. Please rank your level of concern about boaters and floating down the Wenatchee River. Safety, noise, garbage, environmental (water quality/fish), public behavior, trespass, no concerns. Rank your top concern #1 and your least concern #6. If you are not concerned about boaters floating down the Wenatchee river, then you can skip answering this question.

- Safety
- Noise
- Garbage
- Environmental (water quality, fish, and/or wildlife)
- Public behavior
- Trespassing

Add Numbers 1-6 to the rows in Question 9.

10. Please list concerns that you have for any of these launch sites on Icicle creek. Check all that apply.

	Parking	Bathroom facilities	Garbage	Bank erosion	Noise	Public behavior	No concerns
Fish hatchery boat ramp (USFWS) -	<input type="checkbox"/>	<input type="checkbox"/>	<input type="checkbox"/>	<input type="checkbox"/>	<input type="checkbox"/>	<input type="checkbox"/>	<input type="checkbox"/>
End of County spur road (near the fish hatchery) -	<input type="checkbox"/>	<input type="checkbox"/>	<input type="checkbox"/>	<input type="checkbox"/>	<input type="checkbox"/>	<input type="checkbox"/>	<input type="checkbox"/>
East Leavenworth Road bridge -	<input type="checkbox"/>	<input type="checkbox"/>	<input type="checkbox"/>	<input type="checkbox"/>	<input type="checkbox"/>	<input type="checkbox"/>	<input type="checkbox"/>
End of Prowell Road -	<input type="checkbox"/>	<input type="checkbox"/>	<input type="checkbox"/>	<input type="checkbox"/>	<input type="checkbox"/>	<input type="checkbox"/>	<input type="checkbox"/>
End of Shore Street -	<input type="checkbox"/>	<input type="checkbox"/>	<input type="checkbox"/>	<input type="checkbox"/>	<input type="checkbox"/>	<input type="checkbox"/>	<input type="checkbox"/>

Other concerns about launch sites on Icicle creek (please specify)

11. Please rank your level of concern about boaters and floating down Icicle Creek. Safety, noise, garbage, environmental, public behavior, trespass. Rank your top concern #1 and your least concern #6. If you are not concerned about boaters floating down Icicle Creek, then you can skip answering this question.

☰	▼	Safety
☰	▼	Noise
☰	▼	Garbage
☰	▼	Environmental (water quality, fish, and/or wildlife)
☰	▼	Public behavior
☰	▼	Trespassing

**Add Numbers 1-6 to the rows in Question 11.**

12. If you have concerns about river recreation use impacts to environmental conditions, please rank the order of your concern about water quality, fish, wildlife, and garbage. Rank your top concern #1 and your least concern #4. If you are not concerned about environmental impacts due to river recreation then you can skip answering this question.

☰	▼	water quality
☰	▼	fish
☰	▼	wildlife
☰	▼	garbage

**Add Numbers 1-4 to the rows in Question 12.**

13. Do you have any other thoughts or ideas about river recreation on the Wenatchee River or Icicle Creek? If you answered the questions about issues, do you have any management solutions that you would like to suggest?

# Appendix C: Tables 1-14

Survey monkey respondents were asked to check boxes to list all concerns at launch and take out sites. Results are provided in Tables 1-9.

Table 1: Icicle road bridge over the Wenatchee River

Rank	Concern	Number of responses checked
1	Garbage	432
2	Parking	416
3	Public behavior	416
4	Bathrooms	397
5	Bank erosion	358
6	Noise	278
	No concerns	11

Table 2: End of Wilson street

Rank	Concern	Number of responses checked
1	Garbage	249
2	Public Behavior	241
3	Bathrooms	209
4	Bank erosion	203
5	Parking	199
6	Noise	108
	No concerns	103

Table 3: Enchantment Park

Rank	Concern	Number of responses checked
1	Garbage	429
2	Public behavior	410
3	Bank erosion	286
4	Parking	282
5	Noise	271
6	Bathrooms	241
	No concerns	33

Table 4: East Leavenworth Road

Rank	Concern	Number of responses checked
1	Garbage	438
2	Public behavior	390
3	Bathrooms	345
4	parking	266
5	Noise	257
6	Bank erosion	242
	No concerns	24

Table 5: Barn Beach

Rank	Concern	Number of responses checked
1	Garbage	450
2	Public behavior	420
3	Parking	372
4	Bathrooms	360
5	Noise	290
6	Bank erosion	258
	No concerns	24

Table 6: USFWS Fish Hatchery

Rank	Concern	Number of responses checked
1	Garbage	475
2	Public behavior	429
3	Bathrooms	375
4	Noise	281
5	Bank erosion	278
6	Parking	265
	No concerns	58



Rank	Concern	Number of responses checked
1	Garbage	403
2	Public behavior	413
3	Bathrooms	395
4	Parking	360
5	Bank erosion	343
6	Noise	279
	No concerns	61

Rank	Concern	Number of responses checked
1	Garbage	424
2	Parking	413
3	Public behavior	395
4	Bathrooms	360
5	Bank erosion	343
6	Noise	279
	No concerns	61

Rank	Concern	Number of responses checked
1	Garbage	389
2	Parking	363
3	Public behavior	360
4	Bathrooms	336
5	Bank erosion	295
6	Noise	285
	No concerns	87

Table 10: Concerns about floaters on the Wenatchee river

Concern	Rank (and number of survey respondents who gave that rank)					
	1	2	3	4	5	6
Safety	145	64	75	79	79	81
Noise	17	43	69	113	160	113
Garbage	55	165	140	87	57	16
Environmental	224	126	61	55	40	21
Public behavior	80	100	133	121	75	20
Trespass	16	31	49	64	97	258

Ranks were assigned points and weighted. In other words, all votes for the #1 rank were multiplied by 6, #2 rank multiplied by 5, etc. Then, the total points were summed to determine final ranks assign biggest and least concerns.

Concern ranking	6 pts	5 pts	4 pts	3 pts	2 pts	1 point	Sum
1. Environmental	1344	630	244	165	80	21	2484
2. Garbage	330	825	560	261	114	16	2106
3. Public behavior	480	500	532	363	150	20	2045
4. Safety	870	320	300	237	158	81	1966
5. Noise	102	215	276	339	320	113	1365
6. Trespass	96	155	196	192	194	258	1091

Table 11: Concerns about floaters on Icicle creek

Concern	Rank (and number of survey respondents who gave that rank)					
	1	2	3	4	5	6
Safety	127	66	78	77	88	149
Noise	23	52	88	127	189	100
Garbage	55	191	137	128	58	18
Environmental	294	111	80	57	34	22
Public behavior	86	124	144	122	88	35
Trespass	28	54	67	72	115	253

Ranks were assigned points and weighted. In other words, all votes for the #1 rank were multiplied by 6, #2 rank multiplied by 5, etc. Then, the total points were summed to determine final ranks assign biggest and least concerns.

Concern ranking	6	5	4	3	2	1	Sum
1. Environmental	1764	555	320	171	68	22	2900
2. Garbage	330	955	548	384	116	18	2351
3. Public behavior	516	620	576	366	176	35	2289
4. Safety	762	330	312	231	176	149	1960
5. Noise	138	260	352	381	378	100	1609
6. Trespass	168	270	268	216	230	253	1405

Table 12: Summary of Site Assessment Characterization

Site Location	Owner	Garbage	Bathrooms	Parking	Bank erosion	Notes
Wenatchee Launch Sites						
Icicle Road Bridge	City of Leavenworth and Chelan County	No	2 portable toilets	25 cars	Yes	LOC provides garbage cans while on site
End of Wilson st.	Private	unknown	1 portable toilet	1 acre	yes	
Enchantment Park	City of Leavenworth	1 large can	Permanent facilities	>80 spaces	Yes	High water launch site (May and June)
Icicle Launch Sites						
USFWS Fish Hatchery	USFWS	Dumpster	2 portable toilets	>150 cars	Yes	Closed in August
End of Co. spur road (formerly Old Bridge Road)	Chelan County	Provided at	LOC garage	2-3 cars	Yes	
East Leavenworth Road Bridge	Chelan County	No	No	No	Yes	
Shore Street	Chelan County	No	No	3 cars	Yes	
Stump Hole	WDFW	No	No	~12 cars	No	
Wenatchee Take out sites						
East Leavenworth Road Boat Ramp	City of Leavenworth	1 large can	1 portable toilet	0.75 acre	No	
Above Barn Beach	City of Leavenworth	No	4 portable toilets	~ 32 cars	No	LOC and Blue Sky provide garbage and recycle cans while staff are on site in the parking lot

Table 13: 8 Day River Count Summary of Data Collected

River	Date	Day of Week	Commercial	Private boaters	Total	Notes
Icicle	July_11	Saturday	335	811	1146	LOC launched for 6 hrs
Icicle	July_18	Saturday	206	909	1115	LOC launched for 4 hrs
Icicle	July_21	Tuesday	85	271	356	LOC launched for 2 hrs
Icicle	July_31	Friday	72	281	353	LOC launched for 2 hrs
Wenatchee	Aug_1	Saturday	360	747	1107	Only counted Icicle bridge launches (not Wilson st)
Wenatchee	Aug_8	Saturday	814	783	1597	Includes 405 commercial + private launches from Wilson st
Wenatchee	Aug_11	Tuesday	441	218	659	Includes 128 Commercial launches from Wilson st.
Wenatchee	Aug_28	Friday	636	356	992	Includes 272 private+commercial launches from Wilson st

Table 14: Icicle River Totals by Hour Divided into Commercial and Private Boaters.

		Totals By Hour								Totals by
User Type	Date	10:00 - 11:00	11:00 -12:00	12:00 - 1:00	1:00 -2:00	2:00 - 3:00	3:00 - 4:00	4:00 - 5:00	5:00 - 6:00	Day
Commercial	Saturday July_11	8	71	51	76	107	22			335
Private	Saturday July_11	13	46	224	237	114	148	35		817
Totals		21	117	275	313	221	170	35		1152
% commercial of total/hour		38%	61%	19%	24%	48%	13%	0%		
Commercial	Saturday July_18		48	72	52	34				206
Private	Saturday July_18	42	140	188	231	146	96	66		909
Totals		42	188	260	283	180	96	66		1115
% commercial of total/hour		0%	26%	28%	18%	19%	0%	0%		
Commercial	Tuesday July_21		49	13	0	23				85
Private	Tuesday July_21		2	50	36	67	54	46	16	271
Totals			51	63	36	90	54	46	16	356
% commercial of total/hour			96%	21%	0%	26%	0%	0%	0%	
Commercial	Friday July_31		48	24						72
Private	Friday July_31		41	74	50	58	26	20	12	281
Totals			89	98	50	58	26	20	12	353
% commercial of total/hour			54%	24%	0%	0%	0%	0%	0%	

While Commercial boaters were launched on Icicle creek, they represented an average of 34% of river users (ave of yellow highlighted cells). This number ranges from 13% of river traffic to 96% of river traffic at any given time.

# Appendix D: Written Comments Provided in the Survey

Live Adjacent to the Icicle		
Concerns about Wenatchee Launch sites	Concerns about take out sites Wenatchee	Concerns about launch sites Icicle
bridge over wenatchee river on Icicle road. Parking & public behavior	courtesy/fisherman - tube people	Alcohol
Coliform levels in river. Poop on the river	Need warning signs about danger water below site	
Commercial/tubing businesses and their associated traffic (both number of vehicles and humans)	I was unclear of Barn Beach is simply the one sandy beach or all the areas between Black Bird Island and Barn Beach, but my concerns are valid either way.	Not familiar with end of county spur road
Damage to wildlife and salmon redds		
Destruction of fish habitat/spawning sites		
Destruction of habitat, over tourism.	Destruction of habitat, over tourism.	Destruction of habitat, over tourism.
dust, driving behavior, trampling of vegetation	disturbance of wildlife, dust, cars driving fast from parking	disturbance of plant & animal life. Disturbance of people living near launch areas.
Ecosystem health- so much trash and sunscreen. Drunk in public behavior, out of town tourists, local access. I'd like to propose a permit system. County residence get a yearly pass and maybe it cost \$ or not? All others pay for day use permit and parking permit. Oldest hatchery in the state we should be concerned with river corridor for wildlife and water quality as well as privacy for adjacent land owners. Also during Covid seems like not safe to see so many users	The old river pier pilings that stick up at bot launch are unsafe for folks accessing take out... wish they could be removed and pay for day use for non locals	Shore is out of control! I go there often and people ask if I live there and I say yes, and then I ask how they heard about shore street? I think some rentals talk about it.... it's crowded , dog poop, beer cans, inappropriate tubing parties beaches up and then lots of locals as well. Needs trash cans and Maitence all river access should have posted ecological sensitive areas, bathrooms and parking permits (again locals get for free)
Fish habitat.	Fish habitat, public intoxication	Fish habitat, over crowding
Fish hatchery launch site needs improvment		
Interference with animals, birds, fish and other organisms	Plant life and other organisms are severely impacted. Dust and dirt instead of grass, flowers and other vegetation.	speeding in fish hatch and entering/exiting the spur road, lots of dust, urine and feces around parking. Lots of garbage despite a dumpster and bears entering the dumpster. Wildlife impacted by all the people
Life jacket use. Alcohol consumption	Lack of signage	Lewd behavior on Shore St. Sandbar.
No life jacket borrowing program - life jackets at launch sites, drop off points at take outs.	Existing pilings on the East Leavenworth Road boat launch site pose a serious, and known, threat to locals and tourists alike. Need sawed off/removed in late summer to mitigate future risk.	
Parking and the amount of people		
People not wearing PFD		
Periodically parking can be an issue	If high water people can be swept down river further than they want and it can be dangerous.	Don't think it's safe to float while drinking alcohol or without a life jacket.
Safety notices. Awareness of natural habitat. Sustainability	Safety and sustainability	
Shore Street launch site is overcrowded and causing all of the above listed problems.		
there should be educational signs at each launch point, private or not	safety exiting onto East leavenworth RD, no educational signage at the take outs to help people behave better	signage is needed to educate people about the river and help them behave better.
These sites are seeing too much use including a lot of drunken and rowdy behavior	These sites are seeing too much use including a lot of drunken and rowdy behavior	
Traffic on Icicle rd is dangerous at the curved bridge people park and walk on road to get to river	drinking on rivers then getting in their vehicle and drive drunk.	End of shore people park on private property. End commercial activitys

Live Adjacent to the Icicle		
Concerns about Wenatchee Launch sites	Concerns about take out sites Wenatchee	Concerns about launch sites Icicle
<p>Besides all of the other issues mentioned in the survey there is a concerning safety issue with cars parking on icicle road at the bridge crossing the Wenatchee River, a little girl was ran over and killed in front of my house a couple years ago having kids of my own it's very scary to even allow your kids to ride their bicycles to visit friends nearby, scary due to many speeding cars on the road any number of which may have inebriated drivers. Also The increased traffic makes pedestrian or bicycle travel in general unpleasant and much more dangerous than it was before tube Leavenworth started running their Vans up and down the road, what has happened is people have now discovered they can tube the River and bring their own tubes and run their own shuttle, was okay when it was just a low-volume local activity, but tube Leavenworth has turned a pristine River with salmon Reds other wildlife which which are being frightened by obnoxious tourist. Another issue is the business running tubes Up and Down the River is going to some guy from Idaho Named Dave, and I don't think he should be allowed to get away with destroying the pristine River so he can make a few bucks while the resident quality of life is degraded. It would be one thing if it was a community run business that was run respectful of residents in the area and all the proceeds were going back into the community or environment, or funding for the schools. I am all for people getting out and enjoying the outdoors but these River sections should be closed to commercial use, also the end of shore Street should be local use only there is extremely limited parking and no turn around..</p>	<p>Before the city of Leavenworth allowed tube Leavenworth to run their business out of the parking lot at Barn Beach one could go down there and find parking any day of the week, now it is a traffic Jam in a Dusty parking lot, that parking lot should be reserved for people who want to go walking in the park or swimming in the river not as a take out spot for some jackass to make a bunch of money off a natural resource we all share. A lot of time and energy went into creating the riverfront park and there's a lot of old people and young children that just wouldn't mind going down there and enjoying the park, now it's very difficult to enjoy it due to the congestion created by tube Leavenworth..</p>	<p>The biggest concern I have is the effect of allowing someone to run a tubing business in a sensitive river system as if the rivers is a water park. And the accumulative effect that it has on not only the residents but also the river itself and all of that beings that depend on it, it's disgusting what has been allowed to go on, it's not just the tubing business but all of the development of these hotels right along the River, again it would be one thing if all of this development was a benefit to everyone instead of just a few property owners who are capitalizing on there position in life at the expense of everyone else and the environment. I also think there should be a moratorium on any new large development, until until the issues around access and traffic are addressed.</p>
	all of above plus the fish	parking along road
	interrupting spawning salmon and drunkenness	drunkenness
	no signage posted about water level, current, safety, temperature, take out spots, or life vests	no signage for water level, current, temperature, safety, life vest, pull out
	over crowding/entertainment only for out of town visitors	all over crowded.
	safety. the submerged logs make it a dangerous approach for innertubers	trespassing
	Sometimes people take out on private property	Treaspassing
	When fish hatchery parking closes people start parking near old bridge rd and accessing the icicle from old bridge. Cars line up on the roads blocking off the already tiny shoulder. No one enforced the discovery pass required parking down the street from old bridge headed towards Safeway. Then people start creating erosion in the already super low water. Should be permanently closed to tubers once the hatchery closes as well	
		5-11 cars parked, tents, ice chests and lawn chairs on sand bank and there till 9 pm. Left articles of clothing, bikes, toys, skateboards, paddleboard
		Across the icicle from Shore Street is an area that has eroded significantly because of excessive public use (climbing up and jumping off bank). We also lost a tree in that spot last year because of erosion
		Added traffic and excessive speed on the road. There are many children that bike and families that walk the street.



Live Adjacent to the Icicle		
Concerns about Wenatchee Launch sites	Concerns about take out sites Wenatchee	Concerns about launch sites Icicle
		Damage to the environmental system
		Due to the large public use in the Icicle during the summer pollution, garbage, noise, and public behavior is our to hand. I have seen this summer over a hundred cars parked at or near the fish hatchery. Control of public use is required in the Icicle required. Your survey will demonstrate out of hand public behavior, garbage etc.
		Leavenworth Outdoor Center continues to act like the County spur road is their private property. This discourages others from using it so they park along E. Leavenworth Road which is hazardous. LOC also does not tell their customers that alcohol is illegal on the river, leading to more bad behavior. LOC has a long history of acting like this and should not be allowed to operate on public ands and waterways.
		Not wearing life jackets, alcohol, inexperienced tubers and SUPs during high water
		People drinking alcohol on the creek.
		There is limited parking and low reguard for speed limits and pedestrians and bike riders.
		Traffic down shore street. Speeding.

Live adjacent to the Wenatchee river		
Other Concerns about Launch sites on Wenatchee	Other Concerns about take out sites wenatchee	Concerns about launch sites on Icicle
access to River from end of Riverbend Drive; rafters/tubers often travel over private property to gain river access. It is a liability issue and a nuisance for residents.		
Along the Wenatchee River to Confluence of Columbia		
Commercial vehicle traffic on Wilson Street, speeding; Commercial vehicle speeding on Icicle Rd and E Leavenworth Rd; Tubers stopping along river on private property, using land as bathroom and bringing their dogs onto private property.	Stumps at E Leavenworth boat launch create safety concern when exiting tube/SUP	
Concern with the number of people using each of the launch sites, plus the commercial operators. Way too many people which makes the river feel like an adventure park ride. Nature gets the back seat.	Tubing individuals which are drunk, loud, and blasting their music - which travels across the river.	
Crowding the river (too many people on the river at one time due to rapid let-ins by floating companies		Crowding the river (too many people on the river at one time due to rapid let-ins by floating companies
Destroying salmon habitat	Salmon and river destruction	Mistreating the river.
Driving too fast into private driveway, using private driveway as drop off, pump tubs (then leave garbage), turnaround or parking. Driving on lawn adjacent to driveway (it's worn out to dirt). Arguing with me when I ask to leave my driveway. Excessive parking along Icicle Road and danger of people walking down the road with rafts, SUPs, etc.		
Drunkenness, speeding on Wilson St.,using private properties as bathrooms, littering, beligerent behavior when asked to vacate a private property.	Drunkenness, too many people on the river at one time. Need to control number of rafters, tubers and paddle boarders affecting water quality.	Wilson Street Launch: Too much traffic, too many people, serious bank erosion.
Endless shuttle vehicles on all our local roads.	Businesses act as if they have sole use of our public parks. It is hard for us to use the facilities.	We locals are being precluded from using the rivers. Tourists are drunk and rowdy and ruin the experience for the rest of us.
Fish Hatchery and E Leavenworth launch sites impacted by excess crowds: traffic/parking, noise, disturbing landowners	Barn Beach is completely overwhelmed by tubers and commercial use of community property. Beach erosion, crowding, noise, trespass on private land etc.	
Fish Hatchery- garbage, E.Leavenworth Icicle Bridge- Parking	Traffic from commercial operators accessing takeouts/launches through residential neighborhoods.	WDFW property on E. Leavenworth would be a great place for a bathroom ~1/2 down the float
Fish propagation , Bird nesting, Bear issues.	Fish propagation, Bird nesting, Bear issues.	Fish propagation, Bird nesting, Bear issues.
Heavy traffic on Wilson Street by river companies in a neighborhood with children playing.		
How about the public launch on East Leavenworth road? Not only do locals use it, the river rafters have taken to launching from there. Tons of people, with paddle boards. So parking, bathroom facilities, garbage, Noise, public behavior. Those are just a few of the problems.	They also take out and put in on old bridge road, and the trail and beach at Black Bird island.	
Icicle Road Bridge launch (from city of Leavenworth property) results in heavy parking on both sides of Icicle Road south of the bridge. The parking on the side of the road makes it nearly impossible to pull out of the residential side streets in that area. We live there. in addition to impaired site lines, families and kids walk out in the street, with tubes, with little awareness of oncoming traffic.		

Live adjacent to the Wenatchee river		
Other Concerns about Launch sites on Wenatchee	Other Concerns about take out sites wenatchee	Concerns about launch sites on Icicle
illegal drinking - disposal of cans, bottles by filling with water and sinking in river and icicle creek, public urination on banks beaches etc over crowding in areas of access and river, river vendors taking over icicle road bridge area, multiple cars parked on icicle rd making it unsafe for residents to get out of drive ways, more pedestrians on road and speeding vehicles, not enforcing speeding on icicle road it is all associated	illegal drinking on river in parks, garbage in river, sinking cans and bottles in river, public urination on beaches and banks, etc its all the same on river and icicle creek	the issues are all the same just a different day site and people see above
Im confused as to why the main launch site on the Wenatchee is not listed: at the bridge on Icicle Road. Parking, facilities, erosion, garbage, noise, behavior are all major problems every Friday, Saturday, Sunday and Monday from June through September.		
It is totally out of control		
just collected a bunch of garbage from above the very end of icicle road... garbage and mistreatment of environmental areas throughout the entire river system is an issue		
KOA has river access (commercial tubers use for put in) that is not monitored and multiple rescues have been needed there, lack of education and understanding on dangers of the river	East Leav takeout needs obstacles (pilings) in water to be removed for safer exit	All launch sites should have clear signage indicating the dangers of being on the river and rescues/deaths YTD. There should be a mandatory use of PFD's for each person on the water.
Lack of safety- people who don't know the river, sometimes not even knowing how to swim- get in the river float, drunk unprepared and are a danger to themselves and others. 2 parking on Icicle has become dangerous. Pedestrians and bikes cannot pass safely. Tourist park anywhere including blocking driveways and mailboxes. No masks, our neighborhoods becomes Covid Central.	Friends who have private property on the river are constantly being intruded upon by people looking to relieve themselves. Drunken people abound and cause lots of trouble.	
Littering at launch sites and along the river. Public drinking along the road where cars are parked. Parking at Icicle bridge that creates decreased safety for bikers crossing the bridge.		East Leavenworth Bridge launch site public behavior is very poor. People walk through the landowner's backyard and are often unconcerned with traffic. When I lived on Old Bridge Road I often observed open containers and disregard for property owners.
Overcrowded, too many parked cars along Icicle road. Very dangerous for cyclist on the road as well.	Twice this month I had to witness men peeing in public space.	
People drowning or near drowning in the river due to alcohol use and pure ignorance of rivers, water, currents, and swimming ability	Over crowding especially during a pandemic	Over crowding, drowning, near drowning, and pure ignorance of rivers and currents
people that lack knowledge of danger using unsuitable recreation equipment for the rivers and lack of pfd's.		Permit only to avoid overcrowding & safety concerns
people trespassing on our property		
Proximity of parking at the icicle bridge is too close to the river, leaking oil etc could end up in river	Commercial companies taking up too much space and encouraging overuse.	
Public safety . Environmental impact	Public safety. Environmental impact	
Safety	Safety	Safety
Safety and lack or sign boards addressing safety and environmental dangers	Safety of take out concerns AFTER Barn Beach toward Boulder Bend	
safety esp. during high water	safety	Although we don't live by these sites we are concerned
Spawning grounds Destroyed		
The site at the end of wilson street is used as a commercial launch spot, but it is not classified or taxed as a commercial spot. Companies increase traffic grerately on Wilson St, sometimes speeding and not paying attention to loacal residents who use the street. No one takes responsibility for this extra use. Private landowners are profiting off rafting businesses and not paying taxes.	Use exceeds capacity at both the above spots during most of the summer. Parking for barn beach, like everywhere is leavenworth, is inadequate.	With the high numbers of tourists using these spots as tubing launches while they are on vacation, the use everywhere exceeds capacity. A major concern of mine is that (along with many things in leavenworth) tourists do not respect the environment, residential space, or anything else while thet are using the sites and natural resources in the valley..

Live adjacent to the Wenatchee river		
Other Concerns about Launch sites on Wenatchee	Other Concerns about take out sites wenatchee	Concerns about launch sites on Icicle
There are not enough locations for public access to the river.	It would be helpful to have anchors along the riprap to tie up boats to. Currently there is one large tree immediately upstream of the ramp, and one small scraggly tree downstream that are used to tie up all boats and it is hard to keep it all sorted.	
Too many people, over use. Trespass!!!! on private property is a huge issue.	Trespass on private property. Over use.	Trepass on private property. Too many people and vehicles. It is just overused.
Traffic on Wilson Street - speed of vehicles. Way to many cars, buses, vans, trucks on Wilson street. County should count cars on a summer day.		
Trash in the river and the affects on wildlife	Locals can't access public beaches because of commercial launches and take outs- primarily Barn Beach	Even when fish hatchery is closed, tourists are parking on road and launching. This is not good for salmon spawning
Unsafe behaviors and lack of understanding of the river	Public misunderstanding of water safety	
Wildlife is being so disrupted, also living here almost 40 years, I respectfully paddle river.picking up garbage where ever I can get too.have noticed over the years, the clarity of water has changed.as well as the bottom and rocks have increase algae.I would gladly give up my paddling to save our rivers.. people have no respect, the trash it then leave.. please do something, watching the destruction, is killing me.	Same as above, disruption of wildlife, polluting water..	Disruption of wildlife, polluting waters,
	Alcohol use on river and then people getting in cars	Commercial use of private land
	At the boat launch, the logs in the take out area has caused injuries and pose danger for flipping of tubes and being carried a su down river.	
	Boat launch has dangerous logs in the water that must be navigated	
	Concerns about the posts in the water at the E Leav boat launch	
	Dogs depositing feces on the beach	
	Icicle Bridge is overrun!	Icicle Bridge
	Lack of warning signs/education for non locals about dangers downstream if they do not exit at Barn Beach/ East Leavenworth boat access.	
	People drinking alcohol - drunk and safety getting into the launch area.	People trespassing onto landowners' property with no respect or regard.
	Perhaps the take-out or put-out sites could be more clearly marked for water users...in my area, when the ambulances and fire wagons come, it's usually because someone has missed the put-out spot and get carried down to Boulder Bend and beyond...or: river craft get hung up on the rocks and moving is impossible. Have seen river rescues, watched EMTS/PARAMEDICS/FIRE HALL PERSONNEL watch, wait, and hope a successful rescue has taken place upriver...	
	take-out sites are easy to miss - warnings about downstream hazards (hobo gulch, boulder bend) might be more obvious, and more explicit	explicit warnings about water hazards downstream from barn beach ought to be posted at all put-ins
	We live next door to the boat launch on East Leavenworth. We constantly deal with loud, disruptive people, trash everywhere, people trespassing through our yard, going the bathroom in our yard, driving drunk, constant dust in the air because no one oils the parking lot. People party there all night, there are no gates that close at dusk like other parks. Bears are always down getting into garbage. I could go on and on...theft has no become and issue as well.	

Live adjacent to the Wenatchee river		
Other Concerns about Launch sites on Wenatchee	Other Concerns about take out sites wenatchee	Concerns about launch sites on Icicle
	With public bathrooms closed people are excreting in the bushes or even trails.	
		concerned about the eco system with heavy commercial use
		Degradation of spawning areas
		JimDelzer / Dave Johnson @ LOC
		Safety of launching from smaller sites around cars and traffic on the road

Local (Live <50 miles away)		
Concerns about launch sites on Wenatchee River	Concerns about take out sites on Wenatchee river	Concerns about launch sites on Icicle creek
Barn beach parking	LOC and their customers and Blue Sky are monopolizing parking lit space, walking in front of drivers in the middle of the road and also their multiple cars causing traffic jams.	Barn beach parking lot, LOC and their customers monopolizing public parking lot.
Better Signage - PFD's, risks, garbage, etc	The pylons in the river at the boat launch are difficult to navigate for tourists	
Boom boxes		
Commercial river companies encouragement of using beaches along the river and allowing dogs to tube.		
Concerns more with these same issues near Beaver Valley Road and Wenatchee River headwaters access points.		
Covid: people not social distancing, not wearing masks, not respecting others	Covid: people not social distancing, driving and traffic on E Leavenworth	
damage to fish habitat		
Disregard by out of town users towards fish habitat and river health	same as above	
Disturb and/or destroy salmon spawning habitat	Disturb and/or destroy salmon spawning habitat	Disturb and/or destroy salmon spawning habitat
Dogs and people trespassing on private property. Over use!!!!	Over use. Trespass on private property is rampant. Too many commercial entities populating the river with untrained, ill-equipped people who are often drunk or using drugs or both.	Trespass. Over use - just too many people, too many dogs, too many inflatables most behaving badly.
Drinking in public	Very drunk people returning to their cars to drive home	drinking in public
Everything.		Icicle should be closed all year to help with salmon runs
Excess crowds on the water	Overcrowding	
Glass bottles, drunk people everywhere and cigarettes	It is disgusting how many tubes these companies are sending down the river. There is zero regulations and it is ruining the river	There are too many people with zero regard to the natural environment they are in. Garbage everywhere. These numbers need to be regulated. We used to float as a family now with all the paid tubers it looks like the trash rivers in Texas
I am concerned about impacts to fish and wildlife areas in riparian areas along icicle and wenatchee rivers		
I am concerned about the safety of the public while recreating!	Safety!	
I don't have any experience with these particular sites, however at launch sites I use I notice a lack of garbage and restroom access.	there seems to be a bottle neck situation and floaters struggle with gaining access to a safe exit location.	
Impact on riparian habitat & wildlife, & fisheries	Impact on riparian habitat & wildlife, & fisheries.	Impact on riparian habitat & wildlife, & fisheries.
Just today, two trees and a gigantic boulder heve eroded out of the bank. the boulder is terrifying.	Commercial user taking over a beach, widening trails on public land and parking vans, traffic issues	
Lack of Noxious weed control along trails and river bank.		
Lack of posted information to spread awareness of conditions to river users; particularly, lack of emphasis on use of PFD's and caution when floating the river.	Significant danger at the E. Leavenworth take-out, pilings and lack of monitoring for commercial tubers. I haven't floated the river in 10 years without seeing confused LOC tubers who take out on the wrong side of the river and are asking (often drunkenly) how to get back to town.	
Lack of safety signage		

Local (Live <50 miles away)		
Concerns about launch sites on Wenatchee River	Concerns about take out sites on Wenatchee river	Concerns about launch sites on Icicle creek
Land issues (trespassing); Overuse off Rover's by masses of people disturbing wildlife and potentially fish habitat; Public safety and the high number of water rescues; Uneducated boaters/tubers/paddle boarders with no knowledge of water safety for themselves and others; Public health issues with many people defecating and urinating in and on shorelines and water	Overuse of public facilities both by hoards of public and allowed commercial operations who have taken over the area	
Level of use not sustainable.	Over use. Impact to locals.	Not appropriate on residential streets.
Levels of alcohol consumption	Alcohol consumption	Levels of alcohol consumption
LIFE JACKET USAGE IS HUGE PROBLEM		
My residential street Commercial St has become a speedway for the Leavenworth outdoor center vans. They speed by well above the posted 25mph limit. I	The businesses have taken over the public park making it their place of business pushing the residents and other users out.	
No use of safety equipment ie life jackets!	No use of life jackets!	No use of life jackets!
over crowded; parking extends out of launch site		overcrowded
Over crowding and commercial operators acting like they own public lands	Drunk tubers, commercial operators putting way too many people, crowding	Over crowding, drunk people
Over use by outfitters. They think they own the launch site over local residents. Very rude.		
Overcrowding		
Overuse. Especially at the Icicle Road Bridge Launch.	Overuse and traffic into the local community	
Overuse with too many people going in by companies		
Pedestrian and vehicle crowding issues Icicle Road Bridge	Despite signs, users miss these takeouts and require rescue. Log pilings at the East Leav. Rd takeout are dangerous at high flows and can cause people to miss the takeout Eddy.	
Pollution		
Private business taking up public access		
public behavior on or along the river on private property		
Public Education/Warnings: Commercial agencies are not providing sufficient safety information/supervision. I would recommend signage similar to the forest services fire danger rating and a host/info booth during busy commercial use, not that I support the crazy level of commercial use which has so many negative impacts. Turning off of Icicle Road and people walking along this road to access river is a public safety issue	Public Safety, takeout identification from river	I do not use these sites often and am unable to comment
Public intoxication	Too much traffic from tubing companies	
Rafting traffic on Wilson street, too fast, too many busses		
Respecting private property on the river shore	Floaters drinking themselves drunk, unruly behavior, not able to keep themselves safe in the river due to intoxication	
River pollution/littering. Critical habitat for endangered species	River pollution/littering. Critical habitat for endangered species	River pollution/littering. Critical habitat for endangered species, and very narrow road via East Leavenworth Rd. The road needs to be widen with the amount of recreation traffic (pedestrian/bicycle)
River users ignorant of dangers		Trespassing
Rude people leaving garbage all along the river, or urinating or defecating on people's property		

Local (Live <50 miles away)		
Concerns about launch sites on Wenatchee River	Concerns about take out sites on Wenatchee river	Concerns about launch sites on Icicle creek
Safety of the boat launch across the street from Barn Beach	During high water, I'm concerned about drowning risk/appropriate signage letting people know about dangers of the river	
Safety related to alcohol use and lack of pfds during high water	Drunk driving from takeout to put in to pick up shuttle vehicle.	
Salmon disturbance		
Salmon nesting site damage	Fire risk, theft	
Serious lack of parking, no respect for locals from out of towners		
Significantly increased traffic on Wilson Street (dead end street). Yellow school bus loads of tubers seemingly numerous times a day. As far as Icicle Rd Bridge, concerns of a business taking over a public space. They have set up a tent and rent out tubes and do not allow people to park in PUBLIC PARKING AREA. Enchantment Park is just filthy. So much trash and waste.		
Signs of potential river dangers. Needs recycling/garbage cans @ fish hatchery launch site/icicle bridge. Lack of general respect for river safety	Boat launch should become paid parking or part of discovery pass. Recycle bins necessary for beverage cans/bottles. Larger signage for take-outs.	
Spawning	People that miss it can be in trouble	
Speed of transport vans from outfitters.	Lost garbage in the river while floating	
stop commercial tubing	stop commerical tubing use on our rivers	



Which of the following choices best describes your point of view when responding to this survey?	Concerns about launch sites on Wenatchee	Concerns about take out sites on Wenatchee	Concerns about launch sites on Icicle
Commercial river outfitter	Parking and unloading zones are poorly marked and congestion is awful. This is city and county property that could be improved with signage and a some fresh gravel. I take provide the garbage, recycling, and bathrooms.	more bathrooms and a recycling dumpster is needed. Road widening needed for safety and easier use.	The fish hatchery says the primary use is fishing. The numbers show otherwise. if they close the parking they should also close the river access.
Commercial river outfitter			huge crowds of people, with no masks, congregating. also.....not having guides or any safety personnel.
Local business	Fish habitat, local river front property owners must experience a lot of nuisance created by the tourists		
Local business	Trespass on to private property is a major issue. Over use is a major issue. Too many people, too many commercial vehicles, too much of everything.	Too much trespass on private property. Too many people. Too much alcohol and drug use (and yes, we see it all the time.) Over use is hurting the river, hurting the experience.	Trespass on private property is rampant. Over use is evident everywhere on the Icicle.
Other - describe	waaaay to many ppl and dogs. erosion of shore lines and poop and pee from humans and dogs. The animal wildlifes quality of life. ppl womder y and where all the fish have gone well individuals stompin all ober tje beds amd reds fish ate dying not to mention tje other animals that live in on around the rivers. There are to many ppl in the riber. Nothing let for locals. all beaches pretty much takin over all beaches w rude ppl that dont give a hoit about it. there waz a co named Seattle Excursion that loaded ppl up on busses to come here and taft tube our rivers. how is that possible?	errosion of shotelines and habitat. total manipulations of parking. chalked out to benefit said co. basically a shit show in our town. get out and stay out let the locals have SOMETHING THE RIBERS AND HIKING TRAILS R OVER RAN W PPL WHO DONT CARE THEY LRAVE DIAPERS LEFT OVER FOOD HARBAGE BEER CANS LEAV ADBERTISES DRINKIN ON THE RIBER CO NEED TO HAVE NON ALCHOLIC BEVERAGES BEER BOTYLES IN RIVER NROKEN GLASS LEFT ON BRACHES. BREAKS MY HEART LIVING HERE MY EMTIRE LIFE MY GRANDKIDS 5TH GENERATION I BEG U TO PLEASE SAVE OUR RIVERS AND HABITAT!	waaaay too many ppl should b a cap on how many buyts in river alot of human poop and pee plus alot of dogs poopin and peein. im concerned for the habitat and environmental impact on wildlife.
Other - describe			launch sites need to be easily identified and locatable
River user who lives >50 miles away	Fish protection		
River user who lives >50 miles away	general ecological damage		
River user who lives >50 miles away	Wildlife disturbance, noxious and invasive weeds, general overuse!!!	Wildlife, noxious weeds, overuse!	
River user who lives >50 miles away		Water quality issues associated with above	
River user who lives >50 miles away			As how many people on river during salmon spawn as killing are fish i was in my drift boat on day and counted over 250 palle boarders and inertubers in a 3 hr pirod. And there where walking around the river killing salmon spwns
River user who lives >50 miles away			Fish habitat and too many people

Live Adjacent to the Icicle
Do you have any other thoughts or ideas about river recreation on the Wenatchee River or Icicle Creek? If you answered the questions about issues, do you have any management solutions that you would like to suggest?
Give the Cascade School District a permit to operate a tubing business on the River so we can pay for that 60 million dollar school they just built and let the teenagers run it they are already doing all the work anyways.
Yes. Alcohol and noise/no boom boxes. You need a emphasis patrol on life jackets and alcohol by WDFW and Chelan County Sheriff dept. Once word gets out it will cut problem in 1/2 when 1000+ people float down the Icicle the water quality changes due to urine. Somehow you need to control the number of people using the river at one time (good luck). Encourage landowners on Icicle to create a natural riparian zone on property next to river (good example is my property +700 feet of river front left in natural state.
Test coliform levels tubing companies required to provide for human wast of all kinds
Since moving here nearly a decade ago, the amount of use on both Wenatchee and Icicle has grown significantly, to the point where is really busy even on weekdays. Kudos to the County for taking a look at some of these issues. Reducing the number of commercial trips may help resolve some of the issues maybe through a permitting effort. I understand the complexity of trying to "regulate" recreation on these rivers. Maybe the county could ban alcohol to help mitigate noise, garbage, and unruliness, though enforcement could be challenging. Maybe banning floating on the Icicle during low flow periods like August/September.
There really needs to be some restrictions on rafting companies. Like trips into the Enchantments, there needs to be stipulations on how many people are allowed to be on the rivers at one time. Noise restrictions are definitely needed. Locals that live on the river may be interested in volunteering to help police or take photos of floaters who are not complying with restrictions.
A cap on how many tubers private companies can have on the river per day.
Put-ins and parking need to be regulated like The Enchantments. There should be public access for swimming areas where flotation devices are not allowed. There should be substantial fines for emergency services required by irresponsible people and those fines should help fund enforcement and regulation.
There should not be commercial outfitters on the Icicle - too small and over-whelmed. There should be a limit to non-commercial use also as there are at over-used public sites. Could use lottery system or 1st come 1st serve
It's a huge issue that needs creative local input. We can make our town wonderful for locals and wildlife... that will attract tourists and they will love it... please help
Limit commercial tubing
People drown every year due to stupidity and improper use of equipment. I have never seen any signs or public officials trying to warn or site people for dangerous practices. We live at the confluence of the Wenatchee and the Icycle overflow channel and we see all kinds of dangerous activities (ie too much alcohol etc. ) Maybe some warning signs, or an officer there occasionally might help. We've had at least two very bad incidents this year and probably more. Thanks for any improvements that might be made.
There should not be as many people on the Icicle as is currently. We are destroying the beauty and viability of the creek. Stop commercial use and limit the numbers to an amount that doesn't impact the wildlife and owners on the river.
Ticketing people without life jackets. More sign about the danger of the water.
Stop allowing tubing/rafting outfitters to overrun the river with as many people as they can cram into their shuttles. Local outfitters pass off the negative impacts of their operations to the local and frequent users of the river without taking responsibility for the noise, garbage, erosion, lack of restrooms, etc. These outfitters should be required to mitigate their environmental impacts on the local entry and exit points that are now overrun. Outfitters are unjustly benefitting from the public river resource are not dealing with any of the consequences of their commercial activity. Limit the number of commercial launches per 30/60 minutes to ensure a trickle of users rather than dropping off groups of 50+ tubers that greatly diminish the natural river setting people are coming for.
Not allow commercial tubing at high water or at all.
I haven't floated in a few years but if there are too many floating now, and they are not respectful of property along the water, the environment by littering, etc., and don't take safety precautions like life preservers then I think measures need to be taken to maintain the natural beauty, peacefulness, and safety.
Out of town visitors contribute to environmental stewardship by paying a use fee or taxed to directly go towards environmental sustainability and stewardship education. Let's have our region of CHELAN County become leaders for environmental stewardship.
Shut down the tubing companies, make the access point at Shore street safer, add bathrooms to the areas that do not have them

Live Adjacent to the Icicle

Do you have any other thoughts or ideas about river recreation on the Wenatchee River or Icicle Creek? If you answered the questions about issues, do you have any management solutions that you would like to suggest?

Hello, thank you for taking the time to do this. It seems like we need some studies about water quality, how much usage is happening, disturbing of spawning sites and bank erosion among others. I am especially concerned about water quality this year as I can often see an oily film on the river, something I have not seen before. There has been an incredible increase in use of river (on the Icicle--maybe Wenatchee too but I live on the Icicle ) this year and it was already over used. I think that educating people would be helpful. And, maybe suggest some other places they can go that are not so oversubscribed? If there were signs at every ingress or egress it might help people behave better. For example, people could be asked to: use sun protective clothing or only certain kinds of sunblock, not stop along the way, especially at spawning sites (need to educate people as to what these look like), prohibit bringing drinks of any sort on the river especially alcohol (and then enforce this!) Remind people that almost all the property is private and remind them not to trespass. Have a noise ordinance, explain that this disturbs wildlife and other people and enforce it. Stop commercial tubing, they are ruining the river and not helping at all monetarily or with monitoring their guests. Put up signage about hypothermia, dangers of the river and highly suggesting lifejackets be worn. Close the river earlier when it is low. As of last week it was already too low for people not to be dragging over the rocks. Close it when it is too high. people were tubing during the flood season this year. Signage should also indicate river etiquette, reminding paddle boarders and rafters who can actually navigate to avoid tubers and reminding tubers to stay away from swimmers. People are completely ignorant and need education. We have been here 12 years and have seen the river get more and more crowded and more and more polluted and more and more rowdy (drunk and stupid). I wish there was a water park nearby where people could get drunk and float. People should be charged for river access so garbage collection and bathrooms can be provided. I saw several people trespassing on my neighbor's land to use it as their bathroom. These were fishermen/women earlier in the year. ( As an aside, the the decrease in fishing seems to have allowed snags and logs to pile up. The fishermen/women used to remove them.) And, why is the Icicle called a river now when it used to be a creek? It is not navigable. could this designation help stop the overuse somehow? It is truly unbelievable how many people are on this little river this year. Every year we say this but there is no let up during the week this year. every day it is incredibly crowded and overused. The erosion this year is incredible near shore street. People are trespassing on the bank across from sandcastle island to jump into the river. the sandbar itself is completely full of people each day and weekends are a zoo. Every year we see less salmon. I think this is a critical time to do something to protect an endangered species and to protect the river, other wildlife and future. Please help!!! thank you

It would be nice to discourage the overuse of these facilities. I am not sure how that can be done. It would also be nice to discourage drunken and rowdiness on the river and at these access locations as there are some key people who are causing much of the problems. Also, don't have good ideas on how to accomplish these goals.

limit time when open

close down river to tubers boaters and paddleboards when salmon are present. have police on the creek to control public behavior and drunkenness

Pull outs unmarked; put ins need color coded signs indicating water danger levels for temperature, current, level if flow; signs stating regulations of life vests mandated, not drinking in public while operating floating devices; bathroom facilities with trash cans would be helpful.

stop commercial use and limit use to provide site parking no more after spaces are filled. Do we have to entertain the masses 24/7 ??? Limit hours on River 11-4.

Ban alcohol! As in a public park, and on operation of boats, do not allow consumption of alcohol on the river. That would help trespassing, noise, rowdy public behavior, and more. Here is an article that Oregon does not allow alcohol consumption on rafts (does not apply to inertubes, sadly) <http://special.registerguard.com/csp/cms/sites/web/news/12501043-41/story.csp>. Ban alcohol; set rules; limit numbers

Please stop river recreating where people can just enter anywhere. Please limit the number of tubers businesses are allowed to put on the river. Maintain entry sites with porta-potties, garbage cans...and have tubing businesses be responsible for cleaning up after their customers. Allow for the possibility of fines on people who recreate illegally.

Permits to float the river with enforcement. Cap the private tuber companies with amount per day they are allowed. No parking signs in people parking randomly around in front of peoples houses. Tax the tubing companies more and more education. Involve environmental studies on damage being done to the rivers

Their dogs run up my steps, shit on my lawn and if my door is open have come into the house. They are wet and muddy and more than one dog w/o leashes and all bark. I've watched men and children pee daily. Fishing hole has not been good for last 5 years. we no longer enjoy the canadian geese and deer. Dogs should not be permitted w/the sand/islands. We attract children and most owners have no control of their dogs. I've watched in horror as they bound after balls. Music/ice chests/lawn chairs & tents create a "beach" feel & they stay for 2-4 hours & there are no restrooms. Shore street is not a beach-great place to put into the river, swim & float but not a beach. Every morning, I pick up trash & left articles.

We have lived on the river for 7 years. There has been a tremendous increase in the number of tubers Coming down the river, most especially those all linked together in large groups. During June and July and into early August especially, the atmosphere of the river radically changes. I guess our question is whether the river is really supposedly a place for fish and wildlife or has it instead been allowed to become a big party zone. We aren't opposed to people on the river, enjoying themselves, and even using our beaches that border our penninsula. What we are beginning to feel uncomfortable with are the sheer numbers that are allowed to come down the river without any apparent control from the tubing companies. The very large groups often bring with them the loud boom boxes, the loud talking and shouting, and the general feeling that this section of Icicle Creek is no longer an experience of nature. When we moved here we were told there was great concern for the stabilizing of the fish habitats of the river but that does not seem consistent with the allowed current use of the river, most particularly when the river is lower in July and August. Our desire would be to see some management of both the size of groups allowed and the frequency with which they are allowed in the river by the tubing companies. Lastly, in reference to the above question about the launch off Shore Street, if the public continues to be allowed to use our property for their jumping off and diving hole, we request that that area be shored up so that we do not experience further erosion on that bank of the river.

It's not realistic to ban recreation on the Icicle but there should be a way to manage traffic. It should be paid parking at the boat launch with limited spots, paid parking at East Leavenworth road parking area, no parking or launching at street ends and adjacent streets. It should be enforced during low water season. Tubing vendors should pay an access fee and the number of tubers/floaters should be monitored if future access needs to be reduced or scheduled.

No

The fish hatchery has to maintain strict water quality discharge standards which are measured downstream of the hatchery. Where hundreds of people use the waters adding pollution to the environment and Icicle Creek. The hatchery has water discharge controls thus the river recreation people need the same controls or YOU loose control and that is where you are NOW.

Live Adjacent to the Icicle
Do you have any other thoughts or ideas about river recreation on the Wenatchee River or Icicle Creek? If you answered the questions about issues, do you have any management solutions that you would like to suggest?
There are way too many people going down Icicle Creek in low water conditions creating multiple problems: the amount of urine and sunscreen in the water, noise, alcohol-influenced behavior. LOC is an out of control, irresponsible actor. First they took over Boyce's Landing and acted like it was their property until the City of Leavenworth regulated them. They have had at least one fatality. Their vans are overcrowded. On the E. Leavenworth spur they carved trails into the bank and cut down trees and moved dirt to widen the road. If we eliminate or severely limit commercial use on Icicle Creek, we will eliminate many of the problems. There is a broader issue, and a root cause: the Leavenworth Chamber of Commerce endlessly and mindlessly promoting more tourism in the Leavenworth area when we already have more tourists than capacity. This has led to too much traffic, too many cars for parking places, too many STR's in residential neighborhoods, too many people trying to use the trails and too many people on Icicle Creek. The City and County need to reform their lodging tax policies to 1) have a representative group (not just business interests) directing how the taxes are spend and 2) spending more on infrastructure (to benefit both tourists and residents) and much less on increasing the number of tourists. We are a small area and are getting overwhelmed in many respects. Other jurisdictions (City of Winthrop, San Juan County, have figured this out. Let's have a vision of high quality of life for residents as well as a good economy and work towards that, not just ever increasing amounts of tourists.
Sheer volume of tubers is inappropriate for Icicle Creek-there are way too many people. At times it feels wall to wall, and the noise of that many people having fun is disruptive to both human and animal residents.
Put a limit of people on the icicle creek and stop the commercial companies.
No suggestions. It is impossible to inspect or enforce things like garbage or litter control or even public behavior in these situations. Best to hope for is people policing themselves.
There needs to be a limit to commercial operations on the Icicle. Self use or private use would be difficult to control. There should be a tax on every tuber to help fund bank restoration, litter control, restrooms, and enforcement.
1) define prop owners rights in a clear and consistent way. "OHV" is interpreted differently depending upon whether you are a user or an owner. We need an objective working definition. 2) why is public drinking allowed - we can't do it in parks but we encourage it on the river. Drunk people fight, trespass, are loud and rude and even drown. 3) commercial users should pay for the 911 calls - they are increasing as stupider people use the river 4)the Icicle is too small for all this use. Ban commercial use of the Icicle and use a permit system for others. I also live on the Wenatchee and it seems to take more traffic easier with much less scraping of the gravel bottom, etc. people also seem less drunk, probably because it's faster. 5) dogs need to be on leash! Or don't bring! 6) users need to stop peeing and pooping in the bushes - by definition they are trespassing and littering and being gross! 7) how about some signage "don't pee and poop while going down the river" - also "leave no trace". Also "don't walk and drag your floatation through a gravel bar, dummy". Users need A LOT more education! Maybe post some "appropriate river use" signage around town, in hotel rooms, etc.
1. Commercial operators need to be limited to much fewer tubers on the river each day. 2. Have them pay a fee for each tuber. Use the funds to hire river rangers to patrol for trespassing, leaving trash, being drunk, loud music, polluting beaches, etc.
1. Commercial operators need to be limited to much fewer tubers on the river each day. 2. Have them pay a fee for each tuber. Use the funds to hire river rangers to patrol for trespassing, leaving trash, being drunk, loud music, polluting beaches, etc.
1. Set a daily quota for maximum commercial use (including tube rentals) for the entire area. 2. Hire a staff of River Rangers to patrol and enforce laws, codes, and ordinances AND provide education.
Closing Shore St to public access. It is affecting the bank, water, and our neighborhood.
Commercial tubing on the Wenatchee river is getting a bit out of hand. I often see litter in the parking areas and I am continually retrieving trash out of Icicle Creek and the Wenatchee when I kayak from the hatchery boat launch to the East Leavenworth road launch. There should be a way to limit the number of people on the river. The access area at the bridge on Icicle road is over run and I've notice cars parked along the road up to 1/4 mile away from the bridge. This poses a safety hazard along with an issue for local residents.
Do not let either become over used!!
Education for private users, enforcement of safety regs.
Education. Limit number of people using river.
end commercial rafting on the icicle creek as a family that has lived on the creek for 40+ years i've seen the impact of over use there's really no public property along this creek with a 2 to 4 hour float and a county that lets alcohol use on the creek . no restrooms so people trespass to relive them selves . low water impact on salmon nest .in the last 10 years my family can't enjoy our own front yard on weekends my grandchildren have had beer bottles thrown at them watched people relive them selves on our bank . i'm not opposed to rec on the river but don't believe commercial operations should be able to profit with no accountability when they drop off there people they say there not responsible for there actions that's wrong if you have to have commercial rec on the creek every bus load of people need a company guide to be with them form input to output and clearly identified as who they work for .
Far too many people on the river! The lack of respect for private property...garbage, noise, defecating on river banks. This goes on for months! We feel there should not be commercial use of the river-especially at low water times of the year! The overpopulation makes it not fun for locals to use what used to be a nice afternoon at the river. We grew up respecting the river and using it wisely. Many of those who use the river for commercial purposes probably meant well to begin with and we know they do a float to pick up garbage, but their users often disrespect property owners and the river itself! It is a shame that this is happening. Thank you for giving us a voice. We have owned property near the river for 62 years...Truly saddened by the conditions and we feel that no one is listening!
I am a local and do not want the river access to be shut down for locals because there has been too much commercial use of putting thousands of tourists and people bussed in to float the river. Commercial businesses profiting from using the river (tube and raftingcompanies etc) should be regulated or given permits for only so many paying customers a day or required to do clean up and have employees out on the river to monitor and contain the drunk tubers or those who not following the rules and being respectful . Please do not stop locals who use the river respectfully and occasionally from using it because over commercialism of the river has made it so over crowded.
I am against the exploitation of these waters by the commercial tubing outfitters. Crowds are constantly growing and peoples behavior is increasingly rude without regard for the environment and the local residents.
I believe the waters should be accessible to public and should nowhere be limited to private use.
I don't want to see the rivers over managed
I have concerns for the people that live here being restricted on the rivers use due to the poor decisions of tourists.

Live Adjacent to the Icicle
Do you have any other thoughts or ideas about river recreation on the Wenatchee River or Icicle Creek? If you answered the questions about issues, do you have any management solutions that you would like to suggest?
I have no problem with traditional rafting on the Wenatchee, however, commercial tubing on the Icicle should be banned. The Icicle has sensitive land and aquatic habitat, low water flows, and respect issues with residents. The traditional rafting companies use a guide in each raft, and that is a big reason why they have a more acceptable outcome. On the other hand, tubing outfitters on the icicle have no policing, and the lack of bathrooms and safety measures is irresponsible.
I would like to have commercial tubing regulated in the Icicle. There are often more tubers on the river than the river can support. The salmon runs should take first priority over money interests on the river.
If there was a way to control alcoholic beverage use on the river, that would solve nearly all our problems regarding garbage, behavior, noise, and even safety. Also, our shared well is located on the parking site at the end of Shore St. I am concerned with vehicles encroaching further and further onto private property and endangering our houses' water supply. Also, with the tree that fell this year, and with tourist pulling up rocks and throwing them into the river, the access at the end of Shore St is growing dangerous to the older folk who live on our street and accompany their grandchildren to the river.
In my opinion, the issues that are my top concerns could be mitigated by lowering the numbers of people allowed on the river per day during peak season, and this would most easily be done by limiting the number of people the tubing companies allow. The sheer numbers are staggering, with it not being uncommon to see hundreds and hundreds of people float by on a weekend day. I can only imagine that this has negative impacts on water quality and wildlife habitat (all the sunscreen, as well as human urine and feces due to there not being bathroom facilities along the multi-hour float). We live on the river, and we do not mind people using some of our beaches with respect, but when there are hundreds of people using our land, there is inevitably garbage and human waste left behind, which is very unpleasant. We also have one area of our land across from the Shore Street access point which is badly eroding due to so many people using the land. We would like permission to shore up our bank to prevent this from worsening.
is it possible to limit the number of "water craft" on the river during the day ? I realize that the tubing companies want as many as will pay anytime.
It is frustrating that we cannot enjoy our own property when tubing season occurs. I'm impressed with the entrepreneurial spirit of the rafting companies, but they're making money at our expense. The land owners need to benefit from the inconvenience. Last weekend we had a drunk group on our property yelling profanities next to our children. Our family has been here for 135 years and the tubers act like they own the place. Ideas: penalize tubing companies for illegal infractions, tax the tubing companies by headcount and reduce property taxes with the revenue...i could go on. What about the traffic...
Keep it open with safe and sane rules and education about what is expected. People need to experience nature. It heals the soul.
Less people on the river=happy water, fish, wildlife and residents.
Let's make everyone have a permit like they do to climb half dome in yosemite to cut down on use and pay for more enforcement, just like like we do for the enchantments
Limit commercial rafting and tubing. I've lived her for 49 years and have never seen it so bad. The noise and traffic on the rivers and roads are ridiculous
Limit on parking;
Make commercial tubing illegal on Icicle Creek. Ban tubing during low water to protect spawning beds from being walked across because it's too low to float.
more public trash containers, and public restroom facilities. thank you
My concern is safety on the river. People need to know the safest areas to exit the river and understand river conditions drastically change quickly.
No
No alcohol or music; give citations for these. Must sign an agreement to enter the river at access points just like at trailheads. River property owners can call in any disturbance. There is a lot of revenue being lost by not writing citations. It is basically Oktoberfest on the water in July and August. How is it allowed to drink in public? Can we walk downtown with an open container?
No concerns. Let people have fun. We love to watch white water kayakers. Just keep folks off private property beaches and roads.
No signs for safety Garbage pick up Drinking and smoking weed on the rivers
Not allow for profit business on the Icicle. Bathroom & garbage spots.
Parking on both sides of Shore Street is a mess. Parking should not be allowed. It is a public safety issue. One or 2 trucks at the bottom of the street for fishing is OK. There are drunks trying to find their cars, no restrooms so they pee on peoples property it is shameful. Usage should be limited with permits and designated places for outhouses.
Please put an ordinance in place to limit the commercial tubing outfits that send many hundreds of people down the river. They are loud, polluting, trespass, urinate and defecate on the beaches, leave beer cans and other trash. Hire river rangers to police behavior. Everyone using a commercial tubing/kayak outfit should have a permit to be on the river and permits should be limited. Permit revenue could be used to hire rangers.
Public operators should have a limit on tubers, and a fee (\$5/person) that will serve to hire river rangers to police the river, keep the peace, and ticket those who trespass, litter, use private beaches as toilets. Private companies must do a much better job of informing people of an obligation to respect the peace and property of those who live on or near the river.
Public urinating and trespassing are just a normal event along the Icicle and unacceptable. Large tubing groups in low water are also a concern.
Put no parking signs up on east leavenworth/old bridge road near the bridge and direct all traffic to the fish hatchery, then when the fish hatchery closes at low water, there would be limited access to the river. This would significantly decrease river traffic at low water when the hatchery is closed. The fish hatchery could also have improved signage to educate people about how to be responsible. Also, increase sheriff patrols in the afternoons to decrease the drunk drivers, there are many.
Should not be allowed for commercial use.
shut the creek and river down until this is taken care of ~ people won't like it, but they seem to think that they can hide their stupid from those that live in the Valley year round...if they can't take care of it, they don't get to use it.
The Icicle river has become too much of a good thing and WAY too many people. We live on Icicle road and although we enjoy floating the river, would be good to see changes made

Live Adjacent to the Icicle

Do you have any other thoughts or ideas about river recreation on the Wenatchee River or Icicle Creek? If you answered the questions about issues, do you have any management solutions that you would like to suggest?

The number of tubers are staggeringly high and the negative effects on the environment, and for local residents, are significant. We all love the river and shouldn't stop people from recreating, but commercial operations should not be allowed to profit off our natural resources while damaging them. I think we should limit the number of users commercial tubing operations can put on the river per day. I also think those commercial operations should have to pay a per-person-fee, and that those funds should be used to hire river rangers. River rangers already exist in other communities with similar issues and successfully patrol the water, writing citations for polluting, drunkenness, trespassing, etc.

the volume of rafting traffic consisting of intoxicated, loud, young adults has become horrific. Garbage, screaming rafters, damage to environment has reached emergency status. a method to control volume of tourists is urgently need. there clearly is "over tourism" that jeopardizes the future of Leavenworth.

There should be public access sites to the Icicle and Wenatchee Rivers that allow people to use the rivers in their natural states for recreation.

To many people. Ruining experience.

TOO MANY PEOPLE!!!!!!

Tubers might be required to have paddles, water and life vests. Maybe a Hazard checklist Reader board at put ins to remind.

Wave play area just below the E. Leavenworth boat lunch on the Wenatchee.

We live at the confluence of the Wenatchee and Icicle and own a beach at the confluence. It can be stacked with people at this time of year many of whom think they are entitled to occupy our property. I suggest you help by confirming and making public that there is ONLY private property on the Icicle between the put-in at the hatchery and the takeouts in Leavenworth.

We would like to see more areas for picnicking and walking areas for families.

Wear a pfd

What are the companies who profit off the rivers doing to mitigate all the issues raised in this survey? How are they testing water quality, how are they picking up trash, how are they improving safety, and how are they enforcing poor public behavior?? I don't feel those profiting have any accountability in making this better.

YOU NEED TO CONTROL NUMBERS OF PEOPLE ON RIVER AND ALCOHOL USE. NO BOOM BOXES ALLOWED ON RIVER. AND MORE PORTA POTIES FACILITIES LIKE STUMP HOLE ON EAST LEAVENWORTH ROAD. CLOSE THE ICICLE TO FLOATING RIGHT AFTER JULY 4TH. TO PROTECT SPAWNING FISH. ALSO CHELAN COUNTY NEEDS TO ENFORCE THE LAW ON LIFE PRESERVERS ON CHILDREN . I HAVE DISCOURAGED PEOPLE ON TRESPASSING BY MAINTING RIVER BANK RAPARIAN ZONE PLANTING IN NATURAL VEGETATION INCLUDING HAWTHORN AND POISON OAK. DON' CUT YOUR RIVER BANK BECAUSE YOU ARE INVITING EROSION AND UNWANTED PEOPLE.

Live adjacent to the Wenatchee river
Do you have any other thoughts or ideas about river recreation on the Wenatchee River or Icicle Creek? If you answered the questions about issues, do you have any management solutions that you would like to suggest?
You need to police the area better. People are drunk, floating on tubes and careless. They leave garbage everywhere and have no concern for property owners or fish/wildlife.
Limit commercial tubing to max # per outfitter per year through permitting; commercial outfitters could be limited to boats only (rafts, kayaks) if that's less impact on environment/wildlife and water quality; ticket illegal parking at launch sites to discourage private tubers or require paid parking passes for non-residents and use proceeds from passes to clean river, pay for public bathrooms. Require visible Tel#/Co#/Tube# on all commercial tubes to easily report trespassers.
Limits on the number of people/trips the commercial operators have for tubing. Enforcement for no alcohol. As a local, I feel that the river is too crowded on Friday, Saturday and Sunday as well as peak mid week times. I want a more natural experience not a river party. But this is my backyard and it makes me a bit sad to think that a natural experience can only be found early morning or very late afternoon on week days.
ISSUES: Environmental impact of the water quality due to: • Excess of floaters at one time from floating companies • pollution from sunscreen • human waste contributing to increased algae SUGGESTIONS: • Limiting the amount of guests floating companies may have on the river at one time. • floating companies could offer environmentally friendly sunscreen. • Signage encouraging individuals to use the facilities before floating the river to avoid urinating in the river. (floating companies should also encourage guests to use the restrooms at their site before loading their vans) • educational flyers or talks at floating companies to inform people about care of the river when floating prior to launch
Limit access: use a lottery or ticket system. Close the river during salmon egg laying and hatching times. Do not allow privately owned businesses to use MY parks to make money by setting up shop on MY land.
Leavenworth residents get a free non-transferable family annual pass each year when we pay our taxes. Visitors can purchase one-day passes; if they go with a tubing company, they must still purchase a pass. Vacation rental houses can inform renters where to purchase one day passes. Having a nominal fee may curb the over use and proceeds can be used to reclaim the natural beauty of the drop off areas. Right now, all funds are going to the stores that sell rafting tubes and the companies that make the rafting tubes.
Limit the number of people on the Icicle and Wenatchee Rivers and patrol the rivers. Require floatation devices and limit age of children.
There are way too many people going down the rivers. Every aspect you mentioned is important. Use of the rivers should be limited. And locals should be on the top of the list. Parking on Icicle rd and E. Leavenworth rd. should be restricted. All those parked cars are a safety concern for pedestrians and cyclists. The shuttles for the tourists alone are a huge addition to the traffic.
Regulate commercial operations and require them to use HWY 2 for commuting between Barn Beach and Icicle Rd. They drive very fast all day up and down commercial st. -Improve launch locations for non-commercial users and include map of toilet locations and Leave no trace principals. -Drunk driving associated with tubing -Fines for excessively loud music on the river. From our house ~200 yards from the river with a forested buffer it sounds like we are in a night club all day long due to super loud stereos
The amount of river users, both guided and no guided has increased substantially in the past few years. As a result the impacts are becoming intense and associated traffic overwhelming in residential neighborhoods greatly impacting our quality of life and the environment. Unfortunately use is going to need to be regulated somehow. A priority is to get heavy traffic off of residential streets where kids and families live. This is a considerable safety concern.
I would like to know why the rafting companies are allowed to use public facilities, without a user fee. They are making a TON of money, and not putting anything back into the areas they are helping to erode. Not to mention the 30 times a day they drive down many of our roads, not at the safe speed either. Then let's talk about the end of the ride, across from our home. The amounts of things left in and around the river is appalling. I want people to enjoy it..... but I too would like to enjoy it.
I think the rivers are an important aspect of recreation in the Leavenworth area. I generally support access to the river. My concern is the impact the indiscriminate parking along Icicle Road, leading to unsafe conditions for pedestrians and drivers, should be addressed. Perhaps if some or part of the shoulder is signed "no parking" it would make conditions better. thank you.
all these issues are of equal importance how about trying a permit system - limit the number of users per day by river vendors? require river vendors to guide groups of tubers, hence making them responsible for their clients behaviors? enforce drinking laws? require river vendors to clean up river and creek access sites, beaches, embankments and river everyday after using river?
Ban the rafting companies from doing business on public lands. City of Leavenworth should close Icicle Road launch.
Commercial river rafters are not a problem and of no concern. The tubing companies are the huge uncontrolled problem. If you would like to witness the mess, please stop by the vacant lot at 8721/8725 Icicle rd anytime and watch and listen. Saturdays and Sundays are best. Bill Teshler 66905727
It seems like education is the only solution. Commercial river "outfitters" should do more to educate on the environment, wildlife, etc
Every outfitter and store should have warning signs posted at time of purchase/rental of tubes indicating PFD's saves lives and YTD rescues/deaths on the river. All river access points should have the same signage, and should include the KOA, which has many users that drink and party and swim in water with strong currents. Most people are unaware of the inherent dangers of playing on a river and the YTD rescue and deaths clearly stated may give people enough information to take it seriously (more serious than deer getting hit in the Methow which is posted annually). I think we should have an ordinance which requires people on any type of flotation device to wear PFD's, they save lives, it is common sense. River access should be limited seasonally due to sensitive environmental conditions. We should be good stewards of the environment and protect habitat. Low water levels enable users to disrupt the river bottom. Public access to the river (including the KOA) should be limited and restricted on a seasonal basis.
Some kind of restriction to limit overuse, but I don't know how those things work.
I live on Wilson Street. I am very bothered by the amount of rafting traffic that is up and down my road all day long. As the mother, the traffic impacts my daily life and the amount of independence I am comfortable giving my children on the street. The bank erosion at the Wilson Street launch site is significant and the bank needs to be reinforced or the area needs to be regulated. I don't understand how commercial operations can legally occur at the incredibly high level that they do at the end of a residential street and without the river bank being protected from erosion. As for the high use of the rivers and the general behavior of the public, I would like to see the volumes of people limited through some sort of permitting system. Ideally, there would be some small fee that users pay that goes into a fund for conservation efforts. I would gladly buy a use permit.
When river is low, I pick up lots of beer cans and bottles on the bottom of the river, and the amount of this plus other garbage has greatly increased in recent years.

Live adjacent to the Wenatchee river
Do you have any other thoughts or ideas about river recreation on the Wenatchee River or Icicle Creek? If you answered the questions about issues, do you have any management solutions that you would like to suggest?
No more commercial tubing or stand up paddle boarding On the river. Some type of "patrol" on the river for people throwing garbage and beer cans in the river. Or a clean up crew that comes through a few times a week to clean up the river. Paid parking but a very cheap pass for locals. Patrol on the river especially when the icicle closes for salmon. Tourons ignore the closure and still float the river disturbing the fish. That is not ok. Have some one posted there On the weekends turning people away.
Make it by permit only and with safe flotation for rivers current flow and required PFDs
way to many people
Limit or prohibit commercial access. Limit non-resident access.
There should be a limit on the number of people that private outfitters can put on the water. Especially tubers. They tend to have the most impact. Walking on the bottom of the river, drinking, urinating and near drownings are all way too common. Plain and simple, it's just too many people.
Guided tours, limited numbers
Survey seemed biased towards upper ends instead of considerable safety concerns at take outs and rescues past Barn Beach. Taxpayer impacts on the numerous rescues each week is also troubling. Time for enforcement and personal financial accountability of those rescued for foolish behaviour.
Need regulations for recreation on rivers (Wenatchee & Icicle) esp. when levels are low (like prohibit it).
Guide services, rafting companies, tubing companies need to take more responsibility for managing the impact and actions of the people that use their services. Tubing companies especially are guilty of providing access and equipment to hundreds of people on a weekend, but they take no responsibility for crowded parking areas and they routinely take over public launch spots with their business operations. The people they provide with equipment are many times very disrespectful to the natural environment and surrounding communities that they interact with. Independent parties using these natural resources can also be very damaging as many of them have no knowledge of or respect for the natural resources or the community around Leavenworth where they vacation. Vacation entitlement is an issue for many things in the upper Wenatchee valley, but it is a big part of the overuse of the Icicle and Wenatchee rivers. I would propose that when the fish hatchery launch gate in closed, tubing/floating on the icicle should be prohibited. The low water use in late summer continues from other access points when the launches close but the river can not support the use in its very low water state. Education, enforcement, and more responsibility from businesses that profit off the use of the river systems should all be on the table as part of a solution. Operations profiting off the access at the end of Wilson St should definitely have to pay taxes and have oversight for running commercial operations out of that area, which they do not now.
I know a lot of riverfront owners are concerned about the impacts of recreational use, but it doesn't really bother me. I don't think that a handful of very wealthy folks who own houses on the river should dictate use of a public resource. I do however, think that some police/sheriff/whatever presence on the rivers to tamp down on some of the excessive drinking would go a long way to minimizing some of those impacts. In addition, it appears to me that it is the private parties, not paying clients of the tubing companies, that are causing issues.
There are too many commercial operators putting too many people on the rivers without any supervision, any regulations. The area is overused to the detriment of the environment and the private property owners in the area. Too much alcohol and the garbage left behind from the containers. Too many people using private property as a bathroom. Too much drug paraphernalia left behind. Too little space left for responsible people to enjoy the rivers. We need to regulate this much better than is happening now. Thank you for starting that process.
Safety issues (not your Dept, I know). Lack of life vests on adults and children. Too cars on both sides of Icicle rd by bridge. Solutions: perhaps limit the number of users on the river on a daily basis (that would reduce trash and traffic), Monitor damage to river banks and check for trash/waste.
I am concerned that the increased usage will affect the locals ability to enjoy the river. It seems that heavy ticketing of parking (giving some of ticket revenue to river clean up), limiting commercial use or not letting commercials trips launch on public land without heavy cost/clean up and safety requirements, and or requiring every commercial trip to launch with a guide (someone to clean up and run safety) might curb some of the usage issues.
How much money is being spent by Chelan County on river rescues? Signage on the river is limited -- public needs to be warned about the dangers.
I've lived in Leavenworth for almost 40 years now. Spent a good part of our time at the river. Over the last 10 years I have seen big negative changes from people. Garbage everywhere, drunk loud disturbing wildlife. I'm now seeing the impact it's having on the river. Heavy algae on rocks and bottom. Change in clarity. Wildlife is disappearing or dying. I love the river so much, but I'm willing to give up my paddling to save the river. When things really started to change was when tube Leavenworth started..... tubing has the biggest impact on our rivers.. garbage, drunk and disorderly, trespassing, noise. They have ruined the river and it needs to be shut down. I'm surprised there hasn't been more drownings. They now have a booth setup underneath the icicle bridge. Signs posted on rivers, is the city allowing this? Please please help our rivers, I will be willing to do anything to help.. Thank you so much for sending out this survey. I really hope this will be a start of giving back to what we take for granted, is our incredible beauty and nature.. I know we can't completely stop it, there are just too many people in the world.. But we can come up with a good plan, with some restrictions. We truly are loving our rivers to death... thank you
Large groups gather on beaches, private and public and in the era of COVID-19, this is an additional concern. I think a permit system will have to be put in place to protect our waterways. As a local, while that pains me to inhibit even my own use, it's a sacrifice that I believe is the only path forward.
Increased education on river safety, etiquette, emphasize respect for private property, carry out garbage, use santi cans. Have all rafting/tubing rental companies review rules of the river.
I would like to see the logs upstream of the boat launch site removed.
If tubers damage salmon spawning areas, they should be restricted at low water levels. Tubers need to be accountable for their garbage and trespassing. Every year we rescue unprepared people who have missed the safe takeout. Maybe there could be another takeout at the highway 2 bridge?
Centralize the put in and take out areas (preferably to commercial spaces) and concentrate on improving the environment in those centralized spots, thus reducing river impact in residential areas.



Live adjacent to the Wenatchee river
Do you have any other thoughts or ideas about river recreation on the Wenatchee River or Icicle Creek? If you answered the questions about issues, do you have any management solutions that you would like to suggest?
Put a cap on commercial tubing. Our rivers are a precious resource that we should protect and care for. Just like with highly popular backcountry zones, regulating the number of people that use these rivers per day will reduce the human burden we are putting on them. Continuing to pump more and more people downstream every year just to make a few bucks (or a lot of bucks) doesnt seem worth it for the continuing environmental impact.
1. Large print Signage that lets people know how dangerous the rivers are. I live on the Wenatchee on Riverbend Drive. I have seen deaths, near deaths, and people making dumb choices. 2. No life vests are being worn especially the drunken individuals. 3. People do not have whistles on them - required by law when on the rivers, lakes etc. 4. Garbage. Today, saw a group throw their beer cans into the woods across the river from my house. 5. Tree has fallen in the river... branches caught up boats with rafters - one near death accident today. Osprey helped the victim... got him out safely. Tree should be cut so people don't get caught and sucked under which is what was happening with this individual. The tree has already a deflated rafter hung up on it and garbage. It is pretty dangerous. People wander over to try to get the deflated raft... distraction that could take someone's life. Tree can be found across from our house - Old KOA entrance on Riverbend Drive. 6. County signage on Riverbend Drive that says "Private Residence" no river access. Dead End." We get a lot of people trespassing on our property to get to the river. 7. Emergency vehicles are always welcome on our driveway to help get stranded people or dead people out of the river. I worry a lot about the safety of individuals floating the river with no life vests. I see small children with adults who are not equipped to handle an emergency - no life vests, etc.
Enforcement in ALL areas (parking, behaviour, safety) is essential. HOW it's handled is often subjective and needs always to be consistent - good monitoring at launch sites is very important -
Mark snags in river with ribbons or poles so leashes don't get caught on them or mandatory no leashes. Mark beaches as private property near homes. Noise limit- no speakers larger than a water bottle. Have "water angels" who are available to help collect garbage or even give written warnings for lewd behavior. Bathrooms are a must.
I think commercial use should be limited due to the toll it puts in the river and wildlife. I think when the icicle is low or getting low the public should be limited to its access
I am concerned about both high water and low water recreation use, but the question did not provide me with an option to note that. High water has more safety concerns, not just for recreationers, but also and importantly, for public safety folks and good samaritans who risk themselves to help ill-prepared and careless folks.
Please figure out a way to stop Dave Johnson / Jim Delzer @ LOC from destroying the habitat by severely limiting the numbers they put down the river on private land. They have so far been able to skirt all the newer requirements that other commercial outfitters putting in on public land has to follow!
1. I am concerned that some people are taking unnecessary risks paddle boarding and tubing in high water. 2. Alcohol use by tubers.
Actually enforce the law.
All seems very good in late spring an summer, weather dependent river activities
Ban all human use of the Rivers and Lakes.
Ban commercial tubing!
Better maintained put ins and takeouts and parking would help reduce congestion
Can we charge for parking and use the revenue to build better facilities at both ends? Gravel/graded lots with parking spaces, better bathrooms, and clear guidance for proper behavior with enforcement (no smoking, garbage, etc)
Clear, concise signage relating to safely floating the river at the launch sites. Generally less is more, don't make the sign too busy, but include information about using the rivers safely and respectfully. Possibly explore some sort of quota system for the commercial users.
Commercial floating should be limited to certain numbers especially in low water times
commercial tubing should be eliminated
Cornered about rafters/tubers using alcohol while on the rivers and not being safe. I read about recent deaths and near deaths that may have had this as a factor.
Educate the public; start a public awareness/pride campaign.
I can't believe that private business has been allowed to turn this beautiful, peaceful spot into a floating frat party. Gabage, condoms, beer cans, wash up on the banks, people trespass on private property to use the bathrooms, sit on the banks and drink, yell, play music. It has destroyed the peaceful scene along the river, as well as I suspect, the environment for fish and wildlife.
I feel that the commercial tube companies do not inform tubers of being respectful in the outdoors. And there isn't enough parking
I have noticed quantities of garbage lately that exceed what I have seen in past years. I have also noticed the lack of safety equipment (ie, PFD's) for inner tubers
I live about 150 ft from the Icicle bridge. I am one of a few full time residents. The parking situation at the put in is terrible. We get lots of loud drunk people who park on our street to access the put in. A larger parking area would be a great idea. Signage about the dangers of floating the river would also be good at the Icicle Bridge put in. There are several incidents requiring rescue on this stretch of the river because people don't understand how to navigate the river or the danger that is possible from getting caught in a strainer.
I love that people are able to access and play on the river. Many visitors and residents would not otherwise be able to be on or near natural water sources without the recreational access to the Wenatchee River and Icicle Creek.
I think there should be limited access to the river
I wish a capped permit system were in place for commercial operators
If there is no limit to the number of bodies and tubes/crafts these companies can send down these two rivers per day then there needs to be. If there is, then it needs to be a much smaller number allowed. As a local that watches the vans and school buses crowd out our public spots so that a few private entities can profit I am very frustrated by the over use of our waters and resulting degradation of the river environments! I have even had circumstances where I try to park at a public river access spot and one of these tube companies has told me that I can park where they are trying to run their business!

Live adjacent to the Wenatchee river
Do you have any other thoughts or ideas about river recreation on the Wenatchee River or Icicle Creek? If you answered the questions about issues, do you have any management solutions that you would like to suggest?
It is important to set people up for success. We invite millions of people to our town, we should therefore plan for millions of people to need to use restrooms, throw away garbage, and to give them the tools to stay safe on the water. Idaho is a great example of a state which cares for river access and does a great job maintaining put in and take out sites with things like bathrooms, garbage cans and even slides for rafts/kayaks/tubes to enter the water without deteriorating the bank and subsequent ecosystem.
Keep it open, please don't or restrict rive use! It's all we seem to have left these days and even that requires a permit to park in most places.
Limit number of commercial floats on both Icicle and Wenatchee rivers.
Limit or regulate the number of people that can float or inner tube. Prohibit or regulate dogs on beaches and rivers. Somehow teach people to respect rivers for people safety but also for fish and wildlife.
Limit the amount of Tube Leavenworth tourists on the river through out the day. The river gets to crowded. Make any company that has rafts, tubes or paddle boards become more responsible to limit customers. Need to make these companies help pay for the river cleanup during and after the season.
Limit the number of people who can be on the river/creek at any given time and do not allow organized groups/companies to reserve all the spots. Reserve a certain percentage of slots for locals (who pay local taxes and vote locally). Thank you . . .
Make the users pay either for parking or for floating and put the money back into the community that is impacted by it. Limit the amount of tourist floats per day. Fine people for littering.
More education on river use. Not allowing coolers on the river for tubing could cut down on loud and rude behaviors. Signage warning people of the potential ramifications of river recreation during high water times.
More parking, better river access
No parking allowed on edges of Icicle Road in the vicinity of Icicle Road Bridge (IRB). Regulate the number of customers the inner tube rental company can send down the river from IRB.
No, but we do enjoy the hiking on upper Icicle Creek Gorge and skiing along the river.
Paid parking, require commercial trips to be guided (creates jobs), limits on commercial head count, river rangers during 5 week busy season.
Perhaps we need to have some sort of way to police the river and if there are problems with garbage or behavior then those folks need to fined or at least given a warning or asked to leave.
PFD loner stations would be sweet.
Please do not shut river access to locals. We use it respectfully and occasionally. Commercial use in the river is a huge problem( tubers and rafting companies are over using the river...there should be a limit to commercial users each day and use money to clean up) that is where regulations need to happen ...please don't penalize locals who use river respectfully because this is where we live.
Provide more bathrooms and garbage receptacles.
Require a seasonal pass or a single day use pass with a fair and reasonable fee to everyone who is in the river. Additionally I would ban dogs from the beach area and from being in the river.
require life jackets & age management for children
river rescue in that many people with low water levels in the Wenatchee Rive do not wear life jackets and other appropriate gear
Thank you for providing this opportunity for data gathering. We need to limit access to protect the river. Permits may be necessary with associated enforcement.
The icicle is such a small river to sustain all the commercial tubing that goes on. It inevitably affects the wildlife, fish and environment.
The main concerns are people who disregard their own safety.. 3-7 deaths occur annually due to mostly preventable accidents.. the profit earned from this river in tubing, rafting, hotel, restaurant, and general retail sales here needs to be reinvested into river sustainability ... better facilities, education, signage, cleanup crews, etc
The main issue I have is overuse and how many people are out on the river at one time during the weekends and busy seasons. We went out on Sunday evening to paddle board as a family and it was a complete shit show. Huge groups. Blaring music. Tons of alcohol. Girls gone wild. And this was multiple groups throughout the entire float. There wasn't even one quiet section. This is not enjoyable for those of us who live here, have little kids, and want to enjoy a peaceful float down the river and the natural beauty of where we live. Unfortunately, I haven't had time to research ideas of how to manage this in a way that still allows use by all groups. I understand wanting to have a good time on the river, it's just really sad when you see people taking it too far and thinking it's ok to get drunk and party on a river without being respectful of all the other people around and without concern about safety for themselves and those who might have to help them if they get into trouble.
The number of people floating down the river definitely needs to be limited on the busy weekends.
The number of people on the river has increased dramatically. On the busiest days thousands of people pass by our property. Noise and alchohol use are the biggest issues, plus our beach frontage often l'm o
The tubing on both the Wenatchee and icicle creek has gotten out of hand. And regardless of limitations on usership, the access points need serious attention. I'm an avid river recreationalist who has been using these access points for years and have been very sad to see the changes in the amount of users (especially commercial) and the lack of respect for the rivers
There appears to be a need to extremely limit or prohibit tubing & swimming in the region of Icicle Creek from the Fish Hatchery on down to the confluence with the Wenatchee River.
there are simply too many recreational tubers without proper PPE. Too much pressure on first responders and neighbors when accidents occur.
There is extreme parking issues and over use at the Icicle Rd. Bridge down stream. Fish spawning beds are walked on by tubers near the confluence of the Icicle and Wenatchee River.
There should not be access for commercial tubing companies and limited for commercial rafting companies after the middle of July
Tube Leavenworth should provide outhouses along the Icicle and the Wenatchee rivers. Too many floaters using private property to defecate. Increased traffic from tubers. 10-20 vans per day on East Leavenworth. It is fun to tube, don't take away the right to float the river. Some of us property owners like to tube.

Live adjacent to the Wenatchee river

Do you have any other thoughts or ideas about river recreation on the Wenatchee River or Icicle Creek? If you answered the questions about issues, do you have any management solutions that you would like to suggest?

We are mostly concerned about our access to our property. We have a 2nd home at 8888 Icicle River rd. The road under the bridge is our driveway for which we have an easement. In the heavy use months of July and August we often can not drive into our property because of cars left blocking the driveway. Our signage to not block the drive way has been removed or defaced which we will again replace. Also of concern is the parking on Icicle Rd just North of the bridge. Sometimes 40 or 50 cars lining both sides of the road. This creates a pedestrian hazard on the blind curve. Also people cut through our property to get to the river quicker. All this has increased exponentially the last couple of years. It is getting to be a mob mentality. Trash under the bridge is constant but better that i might expect considering the amount of traffic it gets. The road under the bridge (our driveway) is getting bad and needs periodic maintenance. I think the commercial rafters are good stewards of the property but they open the window to mass public usage. I understand the great opportunity to the public that this site has for tubing and rafting and have enjoyed it myself for many years. My family has owned this property since 1965 and has always seen this as a minor problem, but the last few years it has just exploded so the parking or a limited use needs to be managed. This is only going to get worse so we have to figure this out. Our property becomes useless and of no value when we have a big problem under the bridge. Thanks, Bill Fry 509 733 2900 cell

We live on the Wenatchee River and the # of people trespassing on private property to get to the River has risen considerably!!! The # rafters, tubers, etc without PFDs, shoes, helmets, etc. (Even those with commercial rafting Companies) is Significant. The number of rescues is high, and risking the rescuer's lives. At this perilous time the # without masks, also in the Commercial boats, is nil...as in none. In their close quarters in the boats they are most certainly not adhering to "social distancing" guidelines/mandates.

We need better regulation of permitted tubing companies, better barriers, regulations and education to protect fish and wildlife habitat to ensure sustainable recreation use of the area

We need to educate folks on trash, strainers, tying tubes together, high and cold water, foot entrapment, walking on rocks, ect. Tubing companies could educate and do trash pickup days w staff throughout the summer. Old pillars should be removed and we should look at the standing wave as an opportunity to get some environmental grants to fix barn beach/blackbird island or Dryden dam. My neighbor drowned the other day and some of the hazards need to be addressed.

Local (Live < 50 miles away)
Do you have any other thoughts or ideas about river recreation on the Wenatchee River or Icicle Creek? If you answered the questions about issues, do you have any management solutions that you would like to suggest?
Keep barn beach public parking lot for locals and visitors. Company vehicles and their customers can access river from upper pay parking or somewhere else
Better signage for safety issues, garbage cans available, river clean-up days (commercial does this already some), location identification signs along river bank for emergency location identification.
Fewer permits to tubing companies. Permits needed for private floaters. Limit party size. Need a Security team to patrol. Boom boxes need to specifically prohibited. This is a natural area. Take the Party elsewhere.
River companies should have a cap on river use, pay for or pay a large portion for conservation programs to keep the rivers healthy and less affected by their use.
Why is the survey not including the upper Wenatchee river recreation? Headwaters to Plain? Just as much issues and concern there.
I think the Wenatchee river Through town should be closed to use during salmon spawning. Likewise Icicle but because of the run timing it's less of an issue. I watch people walking right over redds and disturbing fish while spawning. Salmon aside, the parking and density of people on the river are out of control. Trash is becoming a huge issue in Enchantment, in the river itself, and elsewhere. I have spent so many mornings cleaning up along the river, it's depressing that people think they can just come here on vacation and trash our beautiful town, smash bottles, throw their garbage on the ground or in the river. Maybe you could limit commercial user days or require All users to buy permits to at least track usage. The city should do more education and outreach. As should the commercial shuttle operations.
Icicle Creek is being loved to death right now.
The commercial operators are not being regulated and stuff as many people/boats/tubes/boards as they can on the rivers with total disregard for the habitat
Better enforcement for illegal parking/camping in high use areas -minimize overcrowding. Penalties for disturbing spawning fish. Better public outreach
Questions #9 and #11: I would rank ALL of those as a 1 if this survey would allow. They are all beyond being minor issues - they are all major issues and concerns. We are overusing these rivers. There is too much commercial use with people who are not supervised, unprepared, treating the river bank private property as their bathroom and garbage can, trespass is rampant and more - much more. We need to control the situation now, not later. Thank you for moving forward to deal with these rivers before it gets even worse.
The sheriffs patrol sections of the Columbia River that I assume see less traffic than the rivers in Leavenworth. Right now the local rivers are a free for all. It is concerning the number of people who are clearly DRUNK while floating; then they get into their cars and drive down the highway...
Close down the icicle all year except for fishing when open. We need to protect our salmon runs and wildlife. Also there shouldn't be any tube or rafting vendors allowed to setup business at put ins. It just creates a shit show
Limit these tubing companies. This is absolutely out of hand. It is disgusting to see the river used like this for as long as this has been allowed to go on.
I believe that numbers on the streams should be limited especially by commercial outfitters
Hire paid or volunteer River Rangers during the busy season to be at put in sites and to float the river for safety. This could be paid for by permitting put in sites or charging for parking.
group sizes are a concern, public drunkenness, smoking, music levels. As far as management solutions, I would suggest having regulations on group sizes and alcohol consumption. I would suggest a river ranger or some sort of authority position who has the capabilities of ticketing people who are being obviously drunk. I would also like to see educational signs and how floaters and paddle boarders effect fish habitat. Potential closer during spawning times, just like there are regulations on fishing in the rivers.
Issuing permits, monitoring the water & closing access when thresholds reached (like monitoring smoke & particulates), user fees that cycle back in to restoration efforts.
I would like a lot more transparency with the contracts with the city and commercial tubing vendors. I would like commercial vendors to have a daily cap. I do not like commercial vendors using my public park for their own fleeting profits. The chamber of commerce relentlessly promotes tubing as an attraction. This policy also needs to be addressed.
Perhaps a fee for parking for non locals to cover costs of managing people impact. Noxious weed control!
It would be great to see a PFD program at launch sites. Offer and promote the use of free PFD's through a publicly sponsored program (similar to what you'd see at large public boat launches at boat marinas, etc.) and a drop-off site at the popular take-outs.
Safety signage. People should be prepared to dodge tree branches, discouraged from drinking alcohol (is it legal even?). Warnings about tying yourself to your tube or paddleboard, PFD recommendation. Also I think the sheer volume of people that the tube companies put in the river is really abusing the environment. They should be paying per person (not sure if they are). They give people extra tubes to store their coolers full of alcohol and snacks that end up as trash.
Heavily restrict public and commercial use of rafting, tubing and boating of any type. The impact of neighborhoods and the environment is tremendous. Safety is a huge issue. Many uniformed boater (tubes, paddle boards, etc) are unsafe and cause undue burden in the community and others. We have personally rescued dozens of floaters already this year before official rescue was called. Many lives saved who had no idea how perilous travel in the rivers can be
Limit use, especially for commercial use. Perhaps a permit system that requires a short training on water use etiquette and safety. Close waters during spawning season. Water patrol; fines for trash in water. No put-in or take-outs from residential roads.
Some method of managing the number of people the guide companies can have in the river at a time.
We need some sort of safety patrol in the community. Life jackets need to be required. Drunken out of town vacationers will continue to require rescue until we put in place some sort of safety precaution.
There should be limits to how many people can tube the river. The abuse is sickening and I feel that I cannot use my local river as it is over crowded and dirty....it truly makes me sad....greed ruins everything and the tubing companies are proving that.

Local (Live < 50 miles away)
Do you have any other thoughts or ideas about river recreation on the Wenatchee River or Icicle Creek? If you answered the questions about issues, do you have any management solutions that you would like to suggest?
Why don't we regulate parking and charge entry fees at all launch sites, or post signs at those we cannot support that it is closed/no trespassing. The money we raise can be for restroom maintenance, river cleanup and beautification, etc. Partner with the City of Leavenworth to do this. The river users, especially tubers are getting more numerous every year. We should charge them for parking and charge an entry fee, at least for adults. Perhaps we could have locals apply for a bracelet that waives the fee?
Commercial operators put way too many people on the river. Garbage, drunk tubers without life jackets, people going to the bathroom everywhere, erosion, decreasing water quality, negative impacts everywhere. The road by the bridge should be labeled no parking and the commercial outfitters should be banned. The parking at fish hatchery should be severely reduced. Maybe limit the number of tubes that can be rented per day to reduce the people. Something must be done. The weekend are so bad that we don't want to take our kids or friends down the river due to all these issues.
The need to spread out floating and rafting to other parts of the river to relieve pressure in town. Restrict some of the outfitters use of the in town section of the river.
What if we limit use (permit system) or charge for parking? The parking fee could go towards trash clean up?
I have significant concerns about the overuse of the Wenatchee/Icicle Rivers during summer months. Large and loud groups tie rented float company tubes together and party all the way down the river. The river is congested, noisy and many violate private homeowners' banks. Perhaps it is time for regulation of tubing companies and recreation like they have in Bend, OR where floating is managed and limited to a certain number per day? I am especially concerned about the damage non-locals create to the fish beds. Perhaps very clear signage about avoiding certain rocky areas could help?
Develop a parking area with garbage dumpsters, bathrooms that can be housed out, a ramp for river access all below icicle bridge in the water maintenance yard, permit tubing companies and rafting companies to pay for this as well as limiting the number of companies than can access the river. This way it is controlled but still accessible for all.
Conditional use permit conditions for commercial tube/raft/SUP operators to pay into a fund to help with garbage pickup. Secure funding to do a use analysis to quantify just how many people use the river.
I just want to comment that "public behavior" is a really vague term that lends itself to subjective responses. I observe that folks are constantly having a blast with their friends and family on the river and if that means drinking beer, playing music, swimming with dogs, etc., I don't feel that we have a right to judge them on how they express having a good time. Leavenworth is touristy, we all know that. People come here to recreate in this special place and I don't think basic behaviors beyond simple respect for the environment, not littering, not trespassing, etc. need to be regulated. It is not fair to judge people having a good time in a different way than we would.
A trail along the river, from the bridge crossing the Wenatchee river on icicle rd to black bird island, its all public land.
thank you for your work and good luck
Yes, all agencies should work together to establish a management plan for the Icicle and Wenatchee river recreation utilization. Once safety requirements, infrastructure requirements and fish and wildlife preservation requirements are clarified/established, conditional use permits need to reflect those requirements and should limit a sustainable level of commercial use through permitting/maximum occupancy/use numbers per day. Safety: Signage, increased/required levels of supervision for commercial operations, public safety where busy roads are adjacent to river access points. Overutilization of the river and access points without respect for wildlife or others is destroying the environment, experience and culture. Let's educate, permit to sustainable levels and require commercial operators to mitigate public safety and environmental impacts.
There is an increased number of people on the river who over drink, are unprepared for tube failures, or are adequately prepared to be on the water for multiple hours
Restrict parking along icicle road by the bridge, and enforce it, this is a dangerous situation. Enforce trespassing on private property along the River. Enforce speed limit on Wilson Street.
I believe the take out at the E. Leavenworth boat launch needs to be evaluated carefully for hazards to paddle boarders and tube floaters. A Leavenworth resident drowned when her foot strap became entangled on a limb as she was getting ready to exit the river. Also I have heard of at least two accounts of tubers and rafter scraping themselves on the pylons just up river from the take out.
Have designated put in/take outs. And police and regulate unauthorized puts ins. Also limit the amount of recreation on the river to reduce the impact to endangered species and wildlife. Make East Leavenworth road wider for pedestrian and cyclist use.
Don't base decisions on a survey. Regulate the rivers to do the right things for preserving the viability of the watershed.
Not sure if this is happening, but I do think the number of tubers the commercial outfits are allowed to accommodate should be limited. I also think we need more signage. Both rivers are used by SO many people. We need more signs about where to get in, what safety measures to take, etc. Otherwise I worry that more and more people crowding in will continue to erode the river, etc. To be honest I am not sure there are any wild fish in the Icicle, but if so I am concerned about there eggs, etc with all the tubers, etc on the river. Wenatchee also. I'm not so concerned about people trespassing on the banks, but I am concerned about erosion of the river bank and the garbage and human waste they leave behind. People treat the river as if it is an amusement park ride. I think better management and signage could help them enjoy it without using it as an amusement ride. Also - somehow signs about the risk of alcohol and rivers? I think many of the noise, etc complaints are people who are consuming too much alcohol.
Thanks to the county for taking this on. Long overdue.
Loaner pfd's, LOC river patrols for garbage, safety, & guest behavior violations
There needs to be more regulation on who uses the facilities up Icicle. Hiking trails and camp sites are overflowing. It is a huge concern with people from out of town and leaving trash, especially while COVID is such a concern. Tourism should have been significantly discouraged this year.
I strongly believe that there needs to be a limit to river use in our area. The other day, a TUESDAY, I counted 36 cars parked along Icicle Rd at the bridge. Living on Wilson Street, I see endless loads of school buses with tubers. I think one of the solutions can be to limit how many people commercial tubing companies can shuttle, as well as a limit to how many tubes they can rent out in a day. I suggest a DRASTIC reduction to what they are currently running. These companies are profiting off of resources that are bleeding dry. The river banks are eroding, the salmon fry are being trampled, the garbage and sheer volume of noise and people is disturbing. We need to put solutions in place!
Remove the commercial tubing companies. Educate tourists (and locals) about the river ecosystems and dangers in the river, year round. Make pay to park areas at launch and take out sights to deter excessive use.
Limit the amount of rentals at a time- have a employee stationed prior to take out to send in the correct direction- it is difficult to enjoy great places on the river because the rafting companies take them over!

Local (Live < 50 miles away)
Do you have any other thoughts or ideas about river recreation on the Wenatchee River or Icicle Creek? If you answered the questions about issues, do you have any management solutions that you would like to suggest?
I see so many tubers from the commercial outfitters who loose the discs they are given to paddle on the river it's really sad to find them floating and hung up in the bushes. They should be tethered to the tubes. And no coolers allowed for commercial tub rentals it brings so much trash that ends up in the river.
stop or limit commercial tubing on Icicle AND Wenatchee River.
Enforcement...they have the education they just don't care. The party comes first... I do think the fish issues may not be well known or realized. Education with WELL MARKED areas to stay out and off of...would make a difference to some folks. The thought that they are damaging fish and/or fish habitat could be something they care about enough to respect those areas.
Install bear proof garbage cans on larger beaches along the icicle river that are managed by the city and or commercial river outfits- accessed by boat. Provide shuttle/ buss service specifically for river put-in and take-out that is managed by the city. Enforce a new mandate preventing commercial tubing on the icicle river.
get rid of the commercial tubing operations, they seem to think they own the right to control the area they are in, like the icicle bridge, they have completely destroyed that are for locals to use, after the icicle closes, come up and see for yourself, come on the next how Saturday after the icicle closes
People jumping off the Blackbird Island bridge, someone is either going to get hurt on the logs and debris in the water, or when they jump on someone floating. People ripping out foliage to make beaches or expand ones there. People going to the bathroom all over. Monitoring the park trails and giving fines for these issues.
It seems like there should be a limit on the number of people that can go down the river through the various operators per day. Perhaps the operators should have to buy land and create their own launch sites. Why are they allowed to overrun the public launch sites? Also, the operators could have to pay fines for non-compliance, help clean up the river, help restore the river banks, and maybe help with education about the river. In my opinion, things have gotten way out of control in LW. I think the city needs to step in and limit the amount of people on the river.
It seems to have been taken over by commercial profit rather than recreational m.
I'd like to see less commercial tubing or the outfitters should be asked to contribute to the cleanup.
Limit the amount of commercial tubes and require parking permits to tube the river if you are not a Chelan Or Douglas county resident. Then actually enforce the rules with citations and fines
Commercial outfit should have permits that limit the number of people per hour/day. There are way too many people on the river, a lot of whom are drunk. It's not safe, it's loud, there is a lot of garbage and it detracts from recreating on the river. Water quality and fish habitat are negatively affected. It's impossible to enjoy the river on weekends, it's a drunken freeway of floaters.
Huge trespass issues. Alcohol, drugs and related issues are bad. Dog issues as well
Suggestions: Limit the number of commercial operators who are essentially filling the river with non-educated, poorly behaving people and dogs - with alcohol and worse. Limit the entry times and locations and numbers of tubers they can dump onto the river each day. Please mark more of the road as No Parking and then ticket on a routine basis! It is a safety issue on the roads. Can you respond to trespass complaints and ticket either the people or the commercial operator (identified by the flotation devices)?? Give us a way to send in photos of issues. Many of us locals would do so if we knew how and where. Is there a way to limit entry locations? Day and Time limits? No alcohol?
How do you expect a person to "rate concerns". They all seem to be connected. Commercial tubing is ruining our waterway/ fish habitat, letting people drown, letting people trespass, litter, etc. At least fishing guides and rafting companies are accountable for the people on their water-crafts. The commercial tubing companies are essentially operating a liquor bar on the water. Enough is enough!
Limit number of people to a more manageable level. No parking in areas where people live, example: Prowell, Shore streets. No pets because of in these areas because of clean up responsibilities.
Hardening launch sites only helps some of the esthetics. A free for all is not resource management even though the rivers are an open public resource. Consider some sort of use allotment/reduction. Stop promoting river use to visitors! Close rivers at a certain cfs or temperature target.
Because it is a public space, people are going to do what they are going to do. It would be great to implement some facilities (bathrooms), clear river rules and guidelines, maps at the put-ins on where to take out, safety tips, and require tubing companies to have a staff member on hand at take-outs to ensure safety. Remove pilings from take-outs, and possibly improve put-in and take out ramps to prevent bank erosion.
I think it's time for river ranger to much alcohol use commercial tubers need to monitor guest better should have armplyer at their stakeouts and do not give coolers for beer I believe tube leavenworth has abused the river in everywhere possible from the environment to trespassing either pull their permit or maybe make a guide go with groups it is so bad I will not float that section of the river anymore been floating for over 30 years
Need to shift mindset to a nature experience, not a party on the water. Floating tag or season pass w money to river ranger and education program.
Millions have been and are still being spent to protect our salmon fisheries but the damages that the private tubers and the private companies that make monies - are doing to our river beds is beyond belief. If the Yellowstone river can be protected why can't ours!
Rafting companies need to be responsible for garbage on the river as well as getting a handle on the public drunkenness they support.
Limit the commercial user numbers by daily caps. Have more facilities at out ins and take outs, have River patrols to pick up garbage/educate public
Yes. I believe we should halt all commercial tubing operations, this would substatially decrease the congestion/impact on the river. In addition, I feel a river patrol, funded through parking fees, would also decrease the negative imoact. This patrol could consist of paid/volunteers. Similar to a neighborhood watch.

Local (Live < 50 miles away)
Do you have any other thoughts or ideas about river recreation on the Wenatchee River or Icicle Creek? If you answered the questions about issues, do you have any management solutions that you would like to suggest?
Current levels of (over)use is unsustainable. Water quality is already considered degraded under the Dept of Ecology TMDL (phosphorous, temp) and excessive recreation exacerbates these, along with fecal coliform concerns from human waste. The considerable bank erosion contributes to excess sediment contribution which degrades water quality and fills-in salmonid redds. Many landowners respond to excess erosion of their banks with legal/illegal bank hardening, sometimes due to trespass but also due to cumulative effects from recreation. While most spring and summer Chinook in Icicle Creek and the lower Wenatchee are hatchery-origin fish (which should be collected at LNFH for broodstock), any residual wild Chinook, along with ALL Onchorynchus mykiss populations (steelhead and resident) are negatively affected by excess recreation. This includes trampling of redds, sedimentation, increased sediment and dissolved oxygen, loss of vegetative shade (>temperature), and general reductions in fish fitness due to harassment at critical life stages. Most fish on the Wenatchee suffer the same fate, however, some may also be wild-origin fish in the lower river. Bull trout entering either watershed in July are subject to the same deleterious life-history effects. Any number of wildlife (particularly birds, ungulates and bears) experience harassment and reduced foraging and migratory opportunities. There ARE management solutions for these myriad problems, though few are easy or palatable to the local business community.....
Visitors need to be educated. They don't know when the river level drops enough to be safe for tubing, what's considered safe on this river, where to take their trash (HOME!) or what to do if they have to use the restroom when they're out and there's no bathroom. Teach them to be better stewards or start shutting down river access for their own and our environmental safety.
At some point, Icicle Creek is going to be overpopulated with rafters, tubers and paddle boarders that their presence is going to cause environmental impact and damage to wildlife and fish.
As a stakeholder, I hate the idea of it being closed to locals. I DON'T wan that to happen. I think we could restrict alcohol consumption on the rivers. This has helped on some rivers in Southern Oregon (the Illinois River). People simply stay away if they can't drink or smoke while on the river. The trouble with this is enforcing it. Perhaps it could be limited to a certain number of people per day. The access points could be closed after a certain number of people have entered the river. This would require an official to count people enter the river at each point.
Boaters could buy permits/passes to access put ins like we do for state parks. There could be annual dues like memberships to help provide to recover the ecosystems they use.
informing visitors in multiple languages about proper use of our waterways. Different cultures have different ways of what is acceptable use help them understand our ways of protecting what we have
I would love to see patrols on the river nailing people for public intoxication and public urination/defecation. I feel so badly for folks who live close to the river and are assaulted by peoples music, contant profanity, and overall disrespectful behavior
Put in and take out locations should be managed- clear parking spaces and clearly defined limited access points, erosion control or dock structures to prevent damage to the shore, and porta potties in any location that has parking for more than a few vehicles and is publicly accessible. Education (signage that you can't avoid walking past and seeing, and possibly a staff person) should be provided at every public put in to let people know that they are not to get off their tube/sup/boat at any location other than designated public beaches, and how to identify and avoid salmon spawning locations. Any company that provides tube/sup/boat rental should be required to provide this same guidance, and preferably a guide. Fees collected from such companies for their use of put ins and take outs can fund these improvements.
Perhaps, there needs to some kind of limit to the numbers of people who can be on the river at the same time. More trash receptacles, noise ordinance signs installed.
Don't allow private companies to provide recreation. Once the hatchery closed private they just paid private land owners and destroyed habitat.
Outfitters need to be limited in numbers allowed. They need to be responsible and stop letting rivets go down at unsafe levels. It is absolutely out of control on the Icicle, way too many, most notorious being tube Leavenworth or LWOC! Need to go to a permitted and lottery style system for outfitters. I do not want to see any regulations for private users.
So many people tubing both rivers are ignorant of the power of the water; nor are they aware of the dangers, and caution required. More rescues happen than are reported to authorities.
Outlaw all commercial tubing on the Icicle. I have been here since 1986 and have seen no problems with commercial rafting I would assume since they are guided. Tubing has been an absolute disaster. Drunks, fight's , trespassing, irate property owners , noise, trash, human feces , dog crap, broken bottles .
Seems recreation is allowed too late in the season on Icicle Creek. When the water is lower, as you know, fish habitats are more vulnerable. Also, it increases the amount of people who linger and trespass on beaches and the creek floor therefore creating more noise and drunken behavior.
Icicle Creek and Wenatchee River usage by watercraft must be reduced. It has become out of control, impacting wildlife, water quality and quality of life for residents. If it is not managed now it will explode and become harder to get control of. I propose a permit system, similar to what is used in the Enchantment Lakes sub-basin. Also, tubings companies must do a better job of educating their customers about low impact tubing. Thank you for your attention to this issue...it's long over-due
It should not be allowed for profit. It is damaging the river, the water, the fish and our quality of life. Leavenworth has turned into a circus to line the pockets of a few while the locals and our rivers suffer.
restrict the use of the commercial tubing and rafting to just the Wenatchee, no ,ore tours from companies like Tube Leavenworth, Osprey and anyone else who is exploiting our paradise for profit. I have been floating the icicle for over twenty years and it is is dying!!! The color has gone from a beautiful emerald green to a dingy brown and is full of trash sunscreen. You can literally see the oily sheen on the water now. it does not flow fast enough to cleanse itself like the Wenatchee does. I feel bad for all of the property owners who have people defecating in their yards. Let alone all of the massive groups of tourists who just do not show enough respect for the environment let alone the homeowners. I recently had to stop a group of twenty guys trying to skip rocks into a group of ducks. It is getting out of hand. Thank you for allowing us to fill out this survey, I just hope it doesn't fall on deaf ears.
A wave park at barn beach would be a wonderful addition to the community.
Additional parking at the Wenatchee River bridge on Icicle road could be provided down the access road near the city wells. This would help alleviate the parking problems at the bridge.
As a property owner near the area, I would be willing to allow easements and access in a way that would help this growing enthusiasm.

Local (Live < 50 miles away)

Do you have any other thoughts or ideas about river recreation on the Wenatchee River or Icicle Creek? If you answered the questions about issues, do you have any management solutions that you would like to suggest?

As we get busier with tourism, it may be a good idea for more regulation - I think it's a way to actually make everyone happy! I bucket my thoughts into three main subjects: 1. protecting the fish/environment/natural world. This is important, but I'm the least educated on management solutions here. So, I'll just say it's important to keep our wonderful area healthy so that it continues to be wonderful. I'll let the experts suggest ways to do this best. 2. Educate the public. We need to tell people "how" to float the river - from where to park, to what to expect, to what not to do, and why. I recently searched google for a map of the river with the tubing paths laid out. Couldn't find one at all. Lack of info contributes to people using the recreational facilities in ways that we don't want them to. Bend, OR does a pretty good job of putting info out there. Examples are <https://www.oldmilledistrict.com/stay-play-bend/how-to-float-deschutes-river/> or <https://www.visitbend.com/blog/2020/06/24/what-to-know-about-floating-the-river-in-bend-during-the-2020-covid-pandemic/> or <https://www.visitbend.com/things-to-do/activities/river-lake-water/deschutes-river-floating-tubing/>. 3. Begin to run scenarios/gather data/plan for things like charging for parking, a more coordinated shuttle for tubers since parking is such an issue, controlling river traffic by having tuber time slots, or other future income generating ideas / traffic control measures. And if we do end up regulating to solve issues, or generate income that tourists would gladly pay, we'd need to educate the locals as well. Example, if regulating parking at the fisheries or city lots happens - give locals a free - yep, \$0 cost, but priceless goodwill! - pass that they can display on their windshield. Or something like that (I know parking is a hot issue right now!). I'd be happy to chat through some of the ideas, as I know space is limited in a survey. My email is [christie.voos@gmail.com](mailto:christie.voos@gmail.com). I love showing my friends and family our wonderful area. I tubed 4 times one week this summer. :) But it's gotta work for the tourists and for our locals...finding the balance will be the toughest challenge of them all.

Both steelhead and summer chinook use these areas for spawning. Steelhead are less impacted as they tend to spawn in April. However, summer Chinook use this area intensively for spawning grounds from mid July to mid-August. Summer chinook numbers, to my knowledge have been steadily declining. It seems like if there is one thing that could be done, it would be to minimize use during these times as they can be left in peace to finish their journey. Sage Hills is closed for deer wintering grounds, shouldn't we protect all animals breeding/wintering grounds?

Charge Commercial entities to cover costs of damage to the environment & for disposing garbage & human waste (provide & maintain public toilets waste disposal on several stops along the float. Charge a parking/launch fee to maintain launch sites. Ticket cars parked illegally on private & public property.

Chelan county encourages the activities on the river and has a responsibility to maintain public safety as such. Beginning with providing proper trash receptacles and bathroom facilities, there are multiple places along these routes where accessible porta potties could be placed, hopefully putting an end to drunken tubes urinating and pooping in front of our children and where our children play. There needs to be a sheriff's presence ticketing and arresting drunken tubers. Our children's lives should not be placed in danger rescuing intoxicated adults on tubes.

Commercial exploitation by tube rental/shuttle services needs to be limited. Parking, beach access and shoreline impact are out of control. Tensions with landowners concerned with trespass make legal use of the waterway unpleasant and dangerous. Perhaps park access along the route with restroom and trash pickup would help. Maybe the lodging tax could be put towards this end.

Commercial Outfits held more responsible for river cleanup and protection via fee/"tax" and/or having to hire people specifically for cleanup activities. Having places along the river for porta-potty and trash with signs/maps at put-ins so people know where they can use those facilities. More signage/education opportunities to reduce trash and damage to river.

Commercial trips encourage crowding.

Consider limits on tubing

Creation of a wave park near the takeout at Barn Beach. This could eliminate bank erosion in that high use area, and act as a resource for our community and visitors alike.

Currently, Covid presents a unique challenge. The number of out of town visitors using the river is record, social distancing is nearly impossible (and rarely attempted at put ins and take outs) and mask compliance while on the water is very low for obvious reasons

Cut the times available to the tubers.....All summer long is hard on the river!

Don't allow LOC or other outfitters to put so many gosh darn people on the rivers. It's disgusting.

Eliminate professional tubing companies from being allowed to operate on either river during low water after July 1st. This is the driving force behind over tourism of the river. Locals who float know the protocols for avoiding Salmon Redds.

Enforcement of wearing life jackets For ALL uses of the river, even when tubing!

Happy with the way it is now- don't want any changes

I am a local, and from what I have seen on the river time and time again are tourists being disrespectful of our waters. Too many drunk people being so unsafe and almost drowning. They treat it like a ride at a water park. I would hate to see our locals pay for their disrespect. Us locals know to respect the river and love to be able to float on a nice summer day! But it has become too overrun with tourists for it to be enjoyable. It would be great if we could somehow have local permits for parking at the hatchery and or boat launch. At least for some days during the week have the river be limited to locals, and on weekends have a cap of how many can park at the hatchery.

i and other locals have noticed a significant increase in tubers floating the rivers due to shuttle vans and businesses, in my opinion, exploiting our natural resources. this increase will and has affected the river, in my opinion there needs to be a limit set on commercial tubing/floating. I have seen other rivers damaged by this practice of commercializing a river and putting way to many people on it during a critical time for the river, low water salmon ect.

I appreciate that an agency is finally addressing these issues.

I believe that the commercial tubes should be done away with. 10000 or more people on the little Isicle is just to much of strain on the environment and the fish

I did not see any questions pertaining to limiting the number of people allowed to use the river. This would seem to be an important issue to discuss, to try to preserve the river from over abuse.

I didn't fill out specific places or concerns, but just overall the sheer numbers of floaters should be controlled at certain times of the year. For the enjoyment of all. Reservation system?



Local (Live < 50 miles away)

Do you have any other thoughts or ideas about river recreation on the Wenatchee River or Icicle Creek? If you answered the questions about issues, do you have any management solutions that you would like to suggest?

I don't foresee the river use slowing down at all, especially with the easy access to cheap tubes and rafts and the nearness to Seattle for recreation. So can we control how that increase happens (provide parking, parks, garbage services, bathrooms, etc)? A great example is what CCPUD did in Plain -- we had a major problem of cars parking (unsafely) along a 45MPH County road to launch or pull off the Wenatchee River. It was also crowded and full of garbage. As part of their public power benefit, PUD constructed a gravel parking lot nearby, provided trash cans and porta potties that are serviced weekly, and constructed concrete steps down to the river. The parking lot is now usually FULL on weekends, with just a few cars on the side of the roadway. It is gated closed during the winter. Could something like that be done by the City/County/Other in several locations? Tourists will go wherever it's easiest, so let's make it easy for them. I also have several concerns about too many people on the water in general with regards to salmon habitat, garbage, and other environmental concerns, but I don't have any good suggestions for that one...

I feel like PFD's should be required on everybody floating the river in high water season. And I don't know how we would enforce that, or enforce people picking up after themselves!! Tourists always come through and just trash this beautiful town with no regard to anybody.

I feel that commercial operations are unregulated especially the tubers. The commercial operations have led to more people using the area. The city or others should regulate the commercial operations and then work to reduce the impact on the river through education and regulation.

I feel we need to limit the number of people. It seems the river has turned into a water park for out of towners who don't realize the impact their float has to our local environment and home. Maybe we can require rafting companies to show a short PSA about our rivers and the wildlife that need our waters to be clean and healthy. Maybe they can get a small refund for bringing back their garbage. They could also be given the option to donate that amount to help restore the river banks or something else that might be needed. Noise level could be presented in the PSA as a way to not disrupt the animals. I'm sure we can do better and be better stewards for our local waterways and wildlife.

I have major concerns for the damage to Salmon Redd's by people tubing and rafting on the Icicle and Wenatchee Rivers. There is total disregard for private property and no respect for property owner rights. I have witnessed people throwing away their garbage, beer cans and other trash in the river and defecating in the river and on private property. This has been totally "out of control" for too long and needs to be addressed along with the damage to endangered Salmon species habitat!

I know that at lower water during warm weather the Icicle-Wenatchee river section can get very crowded with tubers, but I don't feel like it should be limited (e.g., fee, parking, etc.). It's nice to have something that is open to anyone. So many recreation areas are becoming costly to use or closed to certain groups of people. I don't think the crowds are bad most of the time.

I know this is a difficult topic to discuss and find solutions for. It would be great to satisfy the desires of everyone using the river who would like to as it pertains public lands and waterways. That said, the demand for use is underserved by the infrastructure to accommodate it all. From Put in to Parking to take out to transport: the infrastructure really only accommodates a fraction of the demand and use making for an unsafe use and burden on local resources: both emergency resources and physical infrastructural resources. Being that the river is such an amazing resource: how can mechanisms be put into place to not only encourage its use to the greatest extent, but also to establish enough resources to safely guide its use from access, (foot, bike, car, van, emergency services) to use (permits, fees, educational extent, facilities, consumables, human waste), to exit (cleanliness, respect, garbage and monitoring respectful use). I'm not sure the answer on all this: ramping up infrastructure that is commensurate with its use / vs. curbing use to meet existing infrastructure? This is the conundrum, and I look forward to hearing thoughts.

I live on Shore Street close to Icicle Creek. People using this beach access to the river often leave garbage and parking of their cars often congests the area. I think the commercial floating companies should pay a fee per customer for cleanup of the river, potty stations. I think that commercial floating companies should not use residential streets (like I have seen them on Benton Street to bypass traffic on US Hwy 2). I think parking at end of Shore St should be limited to 4 cars only. I think you should post signs to educate people on river safety, protecting the river quality (from garbage, etc.) and wildlife. I see floaters drinking beer from glass bottles and I cringe at them leaving them in the river and broken for others to be cut.

I love late July floating. How can we make it good again? But so many people, loud, rude, drunk, no safety equipment.

I strongly believe in limiting the amount of customers that the tube companies can put on the river each day.

I think that commercial companies should have a daily limit on the number of people they can send down the river. I also believe they should have to provide chaperones for larger groups to prevent trespass and littering. They should not be allowing alcohol on commercial tubes at all. The chamber of commerce needs to change their advertising because it is promoting drinking on the river. My biggest concern is the environmental damages of overuse relating to humans in relation to sunscreens, defecation, garbage and constant dragging over our stream beds. My least concern as harsh as it may sound is safety. Unfortunately if you don't have the brains to not drink or wear a pfd on the river there is not much anyone can do for people like that. These companies should be held accountable for sending uneducated people down a river in my opinion.

I think THIS year the river floating is over populated. I do think it's because of the Pandemic and people only being able to travel within a limited area from their home. I would suggest surveying this year and comparing it to next year (or prior years).

I think too many people are allowed to float where ever they want without respect to the river, local people, private property and are drink and toss their garbage all along the way.

I wish I had suggestions. I love these stretches of river and would love to see access remain open. Thank you

I wish there was a way to limit the alcohol intake of tubers.

I would like to know if river companies have a cap on how many tubes they can send down in a day

I would like to see rafting and tubing companies take a more active role in keeping their clients from trespassing, littering, urinating and defecating in public, and being disrespectful to people in general. Why can't these companies supply security personnel and portable toilets? I would also like for hotels and RV parks to refer people to more accessible beaches like Barn Beach and not beaches like Shore Street where high traffic and parking have a bigger impact on the neighborhood.

I would love to see audio restricted while on the river-not only are there a ton of idiots floating, but they also have terrible and loud music they share with us all.

Local (Live < 50 miles away)
Do you have any other thoughts or ideas about river recreation on the Wenatchee River or Icicle Creek? If you answered the questions about issues, do you have any management solutions that you would like to suggest?
I've lived her for over 40 years. The biggest change has occurred since commercial tubing started. It should not be allowed.
If it's going to be used by commercial outfits, they need to be paying a per person fee (also limit of persons allowed access per day) to properly maintain area and protect environmental integrity of the area.
I'm concerned about alcohol and drug use while people recreate on these rivers causing safety issues. Sorry that I have no ideas on how to manage this for better safety.
In the fall when female salmon are making spawning nests, the river is low and people WALK in the river, destroying those nests. They have no idea that their behavior is completely destructive to salmon's existence. Put SIGNS during that time of year to stay out of the river (except at common swimming holes).
Issue fewer permits. Limit party size. Have a patrol person monitor the waterfront park. Ban boom boxes to further reduce the party atmosphere.
It seems that a primary concern is the number of users per day. Might the commercial groups alternate days? Or perhaps limit daily uses? The parking at Barn Beach is very difficult especially when the comm. operators have their vehicles and equipment taking so much room. And of course the garbage and behavior. (alcohol intake!..... Sigh.....)
It seems that summer tubing on the Icicle and Wenatchee down to Barn Beach is over used. I don't know how to control this other than with education.
It seems the need for permitted use would be helpful to manage the number of people on both rivers. This would help manage the environmental impacts usage has on the environment as well as create a revenue stream for managing permits and enforcement.
It would be nice if the put ins and take outs were more developed better accommodate the crowds.
Just enforce existing laws. Tow illegally parked cars. Charge fees to tourists to use the river.
Keep area open for max. public use.
Keep the rivers open to use
Large number of tubers (private and commercial) during low water is the problem. Limit the number and behavior of tubers (somehow)
Less commercial tubing traffic along the Icicle
limit # outfitters can send on River/day.
Limit and/or exclude commercial use. Mass tourism is damaging the rivers. It will reduce the number of uneducated, unprepared and uncaring people on the river. The amount of use should be regulated by parking availability.
Limit commercial tubing. Enforce the no open container law! No one should be allowed to float the river when it's low and salmon beds are at risk!
Limit commercial usage- or take it away on the Icicle.
Limit daily numbers. Regulate and educate on usage. Facilities with trash and recycle. Signage with rules and consequences.
Limit LOC tubers on the Icicle!
Limit number of commercial tubing on both river systems! To many people!
Limit number of tubers. Tube by permit ONLY
Limit the amount of people going down the rivers.
Limit the amount of people who use the rivers. Permitting system
Limit the amount of rafts and tubing per day. EVERYONE must have a permit to use the river. Tourists and locals!! It needs to come to this!! Funds from this permit can pay for enforcing this. The waterways are getting too populated!!
Limit the number of non-locals on the river. Limit tube company numbers. Sell use permits to non-locals. Educate people on why they should not urinate or defecate in the river. Post Danger signs. Get safety information out to the public.
Limit use by establishing designated put in areas. Charge for parking or drop off to support onsite staff that can educate and stagger users during weekends or high traffic times.
Limited permits for tubing companies and tubing rentals please. The river is saturated from over-use.
Limited tubers/day, noise ordinances.
Limits on tubing/floating access are critical to the continued beauty and uniqueness of the area
local passes to be on the river and severely limiting outsiders from being on the river. taking away local tubing business is zero concern for me when in comes to environmental health.
Local use of river should be maintained it is sustainable. Commercial rafting should be maintained as larger groups can be taken down with less impact behavior is managed. Commercial tubing is the equivalent of a absent landlord behavior and impact to environment is unacceptable. Limit user days to river use during peak seasons and times even with especially with personnel tubing trips.
Lottery system for tubing for businesses
Love that people want to enjoy a float. Seems like heavy commercial use (maybe permit / limit that?). Find a Campaign / way to encourage respect for neighbors (noise) and yelling / drinking? Maybe en educational component?
make sure river users and floaters haul out garbage
Mandatory life jackets for tuning companies, better signing about safety, remove river obstacles (old pier at E. Leavenworth boat launch, volunteer river ranger garbage patrol.
Maybe limit the amount of outsiders on the river. Cutting the tubing and rafting in half
Maybe parking permits (outside vendor kiosk?) required with a set number of permits issued per day to limit access

Local (Live < 50 miles away)
Do you have any other thoughts or ideas about river recreation on the Wenatchee River or Icicle Creek? If you answered the questions about issues, do you have any management solutions that you would like to suggest?
More educational signage at put ins. This includes etiquette suggestions such as not blasting your music and keeping loud voices down and family friendly language used. More garbage cans.
More public education about taking care of the river(radio ads maybe?)
More signage needed regarding PFDs. More garage/recycling containers and restrooms.
My use of the rivers near where I live has declined over the years as the issue of overuse by tourists has increased. I stopped going to the rivers rather than deal with issues of too many drunk, unprepared people.
need to limit people(private and commercial). commercial folks need to pay into an environmental/education/restoration fund for education patrols, clean up, monitoring bank stabilization etc. Need Wilson street access to be better regulated. owner allows way to many people to access that area which includes high volumes of traffic on road, gathering at end of road(garbage, erosion, no toilets, noise levels traffic..all a huge concern)need to be added to the above info even tho they are a private entity. They are adding a huge part of the problem to the equation.
No more Leavenworth Tubing business
No more LOC
No tubing or rafting companies please.
Not allow tube use during salmon runs. Outlaw alcohol on the rivers. Limit the number of tubers to something more manageable. It appears to be out of control.
Nothing in particular. It is a great activity to have at our back door and it seems heavily used without requiring significant County resources to maintain.
Only issues I see is the binge drinking from large parties and litter around or in water.
Outfitter and board/tube rental limits. Enforcement and fines for litter/garbage. Diversify economy so not so dependent on hoards of tourist.
Outfitters should have to be held accountable for the impact they put in the river. They should be limited in their user days/ people they put on the river.
Overuse of the river/creek. Either charge for river use or establish a lottery system similar to that used for hiking in the Enchantments.
Perhaps a permit system of some kind to limit numbers per day. It is crazy on the river every weekend May-July. Too many people.
Perhaps close off or limit river access for parts of the summer to allow natural processes to take place uninhibited if indeed they are being inhibited.
Permit system. It sucks, but it might be the only way to control the unchecked growth of river use.
Permit use. Far too many people are floating. 2 local teenagers saved a mans life 2 weeks ago. He was drowning and very drunk. There are so many issues with public behavior and safety and the amount of use is destroying our waterways. Locals want to be stewards of this beautiful place but we are so overrun with people who just don't care and are here for a good time that we are losing hope. People who live here love this place and don't want to see it destroyed. Our rivers are special and they are being abused.
permitting process for tubers? limiting numbers on the river at any one time.
Please limit the amount of rafting/tubing companies. Please limit the number of people each company can run per day. Please expect companies to require safe sunscreen brands, bathroom facilities for their customers, use private land for putting in and take out.
Porta Potties at the most populated access points. Regulation of commercial tubing companies.
regulate/reduce number users on the river (tubers, paddle board, etc.)
Regulation and limitation of commercial use is absolutely necessary.
Remove the parking along Icicle Road it is creating a hazard, limit the number of people on the Icicle,Wenatchee River and increase the cost to launch, revenue should go to management.
Restrict tubing companies to a more manageable number of tubers at one time
River use tax for SUP and tubing rental companies to manage waste, parking, etc. Discover parking pass requirements or Leavenworth locals parking pass which would be free or cheap for locals but would force tourists to pay to play and create funding for management
safer, more orderly parking
Severely limit use by non-locals during low-water. Suspend tube rentals after a certain low water point is reached. Require a USFWS permit to park at the hatchery launch. Require tubing/rafting companies to have more educational material re: fish and wildlife of the Wenatchee Valley and have signage at launch areas that remind folks to be respectful of habitat.
Should have ban on sun screen use.
Shut the river down to tubing (Not paddle boards) once spawning is starting
Some sort of permitting process should be enacted to limit the number of boaters/tubers on the the river. More signs about private property, respect for the environment, etc is not going to affect tourist behavior. Sadly, I think tourism in general in valley needs some form of regulation.
Standards for river use need to be higher, their is to much litter and not enough respect for property owners and the environment. This is not a "river user" problem, it is a societal problem that is being carried over into the river areas where it is more apparent.
Stop bridge jams at Blackbird Island. Teens are crowding the bridge, not masking or social distancing, making it difficult for pedestrians to enjoy and have created a dangerous game of jumping from the bridge to see how close they can come to rafters and tubers. I personally experienced this. It's extremely dangerous to everyone and must stop.
Stop the tubing,

Local (Live < 50 miles away)
Do you have any other thoughts or ideas about river recreation on the Wenatchee River or Icicle Creek? If you answered the questions about issues, do you have any management solutions that you would like to suggest?
The business' who use the river should be held accountable to keeping the river clean. This could be accomplished by a joint agreement that they spend one day a month just cleaning up the garbage or a day use fee that would cover clean up.
The condition of floaters after consuming on river and then drucing
The Dryden dam needs to be modified to provide safe passage for boats.
The number of rafters should have a limit. Alcohol should be restricted. Trash needs to be forbidden. There are too many people on the river almost every day. I walk along the river everyday and see the effects.
The parking at the fish hatchery put in should open earlier in the year, there is essentially no reason to close this parking that I can see in the spring although I understand it is closed in low water season for fish and habitat protection
The river is an asset for residents and tourists. It is important to create sustainable use for the future. I do not know how commercial permits work, but I wonder if commercial companies are permitted a certain number of user days/ users per month. When they hit their quota, then they are done. Another way to encourage better behavior by guests is to require companies to have employees floating the river every hour with a uniform that shows the guests that the companies are invested in safety and the health of the river.
The river needs to be alcohol free, especially to the tube rental companies
The rivers and riparian zones are being loved to death. Leavenworth was built for tourism and there is now competition to some extent between residents, locals and tourists. The quality of life of locals and residents has been impacted negatively.
The sheer number of tubers on the icicle makes it undesirable to even go there any longer as a local resident. Quality of life for the wildlife and the homeowners has been severely impacted. I can only imagine the number of redds that are disturbed or destroyed.
The tourist group vehicles are driving too fast and are reckless with our banks, parking lots, and feel like they overload the system.
The use of alcohol, drugs, nudity and pure congestion. The activity on Icicle River is not general public use, but rather business with tubing companies profiting and the publics expense. The operate illegal vehicles and provide pollutants (Frisbees). People dedicate on private property and causing conflict potentially escalating in bodily injury.
The Wenatchee and Icicle are fantastic resource and recreational benefits of living in this community. updated signage, improved parking and bathroom (park) infrastructure are most important to focus on. You can't REGULATE people from having a good time. People will drink (I drink) when they float the river. People will stop and access beaches. I hope this group encourages good behavior but does not Police and over regulate river users. We can encourage positive use of these resources.
There are companies who run a business on these stretches of rivers, providing anybody the ability to float the river. Which is good for a business but crowds the river. They need to spearhead trash clean up and providing clean restrooms.
There are too many commercial floaters. It is a Disneyland circus that diminishes the natural experience. Too many drunks. Too much loud party music. Crowded launch and take out sites. We are local so bathrooms aren't so much of a problem but there are just too many people. It's like a water slide park even midweek. Garbage. Parking along Icicle rd making it hard for bikes/peds to stay out of traffic. It's a lost recreational resource for us. Getting worse.
There are way too many people recreating on the river, especially in the low flow months, especially by people not from this area. Too many times I can barely get by people on the river during the heat of the day because there are just so many people. Way more garbage and cans floating in the river or lying on the bottom. People urinating anywhere and everywhere. Parking can get out of control on Icicle Road by the bridge, making safety a huge concern.
There has been SO many people on the icicle this year, and so many of them are drinking. Regulate the number of people accessing the river, and also the amount of drinking that is happening. The alcohol issue is that people seem to be less likely to be awareness of their impact on the river, more likely to litter and also more likely to defacate on river banks. There are not many put in locations: perhaps people can be issued passes for floating so those of us without river access can still use the river and the county is able to generate funds to manage it better. Then people could buy a one day or multi-day pass? This is costly to monitor but limits could be placed at the hatchery for number of people who could float per day without going through a tubing company? There are SO many drunk drivers right now driving away from both the Boat Launch and the hatchery that having the sheriff come through during peak season to give people DUI's will help curb things. Lastly, it's the habitat that I'm most worried about so enforcing the closure for the fish window is essential.
There is a high demand for river access facilities by locals and visitors to the area. I'd like to see more participation from local governments to increase and improve recreational facilities.
There probably should be limitations on the numbers of folks on the river tubing as my understanding is that there getting out of the craft disturbs the salmon spawning. Also many behave loudly and poorly with respect to the community's aural environment. Perhaps the limitations should be only in effect Fri-Sun during the main hours of tubing, 10-5. Perhaps maximum number of companies doing rentals and a maximum number of rentals each. The tourists seem to behave far more poorly than the locals from what I can see.
There should be a cost to launch on the weekends at icicle bridge and the fish hatchery. This should be passed along to the commercial companies who's patrons are trashing the river and town. This can be used for facilities and public safety.
We all pay for the fire department and sheriff but they are running calls all day rescuing people in the river and it's the local residents that pay for it. Increase the tourism tax on hotels.
There should just be a quotas, and unique restrictions on put in/take out locations during low flows when salmon are developing their redds
This is beyond the scope of just river/creek recreation, but I wish there was legal means to limiting the number of people at a given time in the park, on our trails, and in the river, as well as enforcing open container laws and drinking on the river. It hardly feels like a place to go be in the quiet and serenity of nature and see wildlife with the noise, litter, and behavior that goes on in the park and on the river. Thank you for the opportunity to provide input.
Time to limit the tubing operations numbers. Over exploitation is ruining our waterways and the locals who live along the river. Maybe set up a taxing system for the tubing companies to offset the damages.
To crowded, how do we limit
Too many commercial tubers. Companies need to be more responsible about garbage. I see so much garbage floating down the river when I hang out at Alpensee Strauss beach
Too many people float the Icicle. Commercial tubing should be limited and managed more closely.

Local (Live < 50 miles away)

Do you have any other thoughts or ideas about river recreation on the Wenatchee River or Icicle Creek? If you answered the questions about issues, do you have any management solutions that you would like to suggest?

Too many people talking/yelling/laughing causing noise along the river ways disturbing home owners, golfers and those doing non floating recreation by the rivers.

Tube comp it's should be limited. Charging for parking would also weed out the trashiness. Maybe a \$25 annual pass that a portion of the proceeds went to river conservation efforts.

Tubers and out of town floaters need to go

Underwater safety of logs and old piers at east leavenworth boat launch

Unfortunately our valley has become a recreational hot spot. I feel I can no longer enjoy it anymore and now travel to less used areas.

Use Colorado's Maroon Bells as an example. Parking at fish hatchery. Buses would transport hikers to trailheads. Locals, campers could still tribe in. Revenue for improvements.

Way to many people and unacceptable behavior.

Way too many people on tubes and rafts who are inexperienced. The area is also overcrowded. Commercial tubing and rafting should be limited.

We love going down the icicle as a family. It is unfortunate that it has become such a party scene. The drinking, loud music, pot smoking, and foul language by the large groups really takes away from the beauty of the river. I would love if outfitters could no longer rent tubes on the river. I would also like to see group sizes limited and alcohol banned on the river.

We need a standing wave at the Dryden dam.

We need controlled use regulations with maximum limits on public usage to protect our environment.

We need to eliminate alcohol use while floating / tubing and we need all to wear ( not carry) their flotation. Devices

We need to implement permits for the areas especially at low water times(july,august).

We used to float the river as locals and it was a pleasant way to cool off in the summer. But ever since businesses started operating, encouraging drinking and large groups, it has lost all the charm. The last time I went down the river I spent my time gathering trash. It just was no longer enjoyable. The tourists were throwing food at each other and tossing beer cans out in the river. It has become a crowd mentality. Do whatever you want and disregard the consequences to the water, fish, other people and land owners.

When the river is low, there is damage to fish spawning areas and at that point, the river should be closed to tubing and rafting and paddle boards.

Which of the following choices best describes your point of view when responding to this survey?	Do you have any other thoughts or ideas about river recreation on the Wenatchee River or Icicle Creek? If you answered the questions about issues, do you have any management solutions that you would like to suggest?
Commercial river outfitter	More signage and education on proper equipment on a river
Commercial river outfitter	The city needs to take a bigger role in managing access points. Parking lot and road improvements, bathrooms, garbage, recycling, signage, and enforcement. Regulation is needed on the busiest weekends at the Icicle Road bridge. A sheriff or security guard in uniform would be effective.
Commercial river outfitter	yes. every 10 people commercially tubing should have a guide on a paddleboard or ik with them. its pretty clear there is 2 major tubing companies that do not do a great job monitoring their customers.
Government entity which owns land within the study area	Human waste is one of my biggest concerns. This leads to water quality issues and trespassing. Perhaps portajohns could be installed at intervals along the river, perhaps with easements from landowners, to help relieve the problem. To deal with a variety of issues, the simple presence of a uniformed person can be very helpful. Perhaps uniformed volunteers could float the river and be stationed at launch points on weekends, educating people on appropriate behavior. If they were empowered by the ability to issue citations, they would be far more effective. We could make all sorts of rules, but without enforcement, they are meaningless. They could be trained in water safety and lifesaving as well. Perhaps some lodging tax funds and fees from commercial river users could be used to support this kind of River Monitor program. If River Monitors were in place, some rules of behavior could be established too, such as banning the playing of music on external speakers (likely much appreciated by people living along the river).
Government entity which owns land within the study area	I think that the rafters and tubers need to be reined in more. Their behavior is pretty bad. I think DOE should come in to regulate these kind of activities on the rivers.
Local business	I just feel the tubing has got to change. It's so bad having so many people go down both of our rivers . People get way to drunk and don't know how to respect the rivers . It's horrible for the poor people that live on the rivers. I have lived here in Leavenworth for 40 years . They never should've let the commercial tubing come in.
Local business	Limited number of tube rental per day Limited number of private rafters per day There must be dozens of other small town communities that are facing the same issues. How are they handling it?
Local business	Too many people allowed on river at one time. Must be permitted like so many other of our high use Nat'l rivers ie Salmon in Idaho
Local business	Unfortunately the number of accidents in and around the rivers are increasing and so is the cost to Chelan County. A portion of these cost should be passed on to those who have required assistance. Restricting access to Public areas and like the Enchantments limiting the number of visitors is likely and necessary approach.
Local business	We need to lessen the use. It is obvious that there are too many people (behaving badly), too many vehicles, too much alcohol, too much trash, too much trespass and the experience has been degraded. I am not a biologist but I'm sure the Hatchery can speak to the mess this is for them and for the fish they are charged with raising and releasing. Solutions: lessen the number of commercial businesses that are dropping people in to the river. Lessen the dates/times they can do so. Maybe put further limits on river rafters as well as the tubing outfitters although tubing is a bigger problem. Start giving tickets to those who park where they should not be parking - and make them expensive tickets. Post signs about no parking, no river entry. Ticket those who trespass/dump garbage/make excessive noise and otherwise conduct themselves against the laws. Close off the Hatchery entry completely if possible. Close off other entries where it can be done. Our river used to be a great place for a family to spend part of a day -- now it is often times not safe to take children anywhere near the river due to unacceptable public behavior as well as over crowding. Thank you for acknowledging this issue and staring to deal with it.
Other - describe	As a local I feel we have no privacy on or around the river and parking and homes and garbage and sanitary issues & 🏠 we are going to have outdoors rec.visitors so I don't have a solution
Other - describe	I would like to see the flotillas of multiple people tying up their tubes together be illegal. I'm not sure what the max number of tied tubes together would be, but these massive groups of 10 or more make it difficult to maneuver the water system at times.
Other - describe	limit number of people allowed on river by rafting companies. Charge rafting company \$10 per person to float on the river. Charge river floaters\$ 10 (or more) to use river at entry points.
Other - describe	maintain public awareness of hazards and respectful behavior for others and for the river.
Other - describe	Overuse seems to be the main issue. When I drive on Hwy 2 toward my home off of Icicle Road, I am amazed at the traffic, many of whom are coming to recreate here. Theses are rough health and economic times. What would it be like if all was free of Covid and economic downturn? As long as we rely on individual private vehicles, our impact is immeasurable. I have no answers but public conveyance has got to be considered. We're destroying our planet faster than we can reclaim it. Sad but I'm afraid true.
Other - describe	Shouldn't allow kayaking on the Wenatchee river in the Tumwater canyon. Too dangerous & too many killed doing it.
Other - describe	Yes the co can pay the city more money per butt to have the funds to correct what they petmit by having too many companies that put butts in ri er and DO NOT CARE ABOUT ANYTHING BUT LINNING THEIR POCKETS! No more rafting or tubing. Save the wildkife fish environment shorelines eroding stop all and any other co loading ppl up on busses from Seattle Excursions from droppin ppl off to abuse our rivers w no repercussion. No more shuttle after shuttle eroding parking areas that arent big enough stop co from running business that think greed is more important then the animals that call the river their natural habitat. Stop the insanity i beg you.
River user who lives >50 miles away	Cashmere takeout, it is difficult to access from the river
River user who lives >50 miles away	Charge a use fee for out of town residents to use this stretch of the river. It is getting pretty beat up. Maybe limit the number of floaters/day who are using commercial floating services. Locals should now be limited to use of their community natural areas.
River user who lives >50 miles away	Charge a use fee or tax and/or control the number of recreational floaters on both rivers.

Which of the following choices best describes your point of view when responding to this survey?	Do you have any other thoughts or ideas about river recreation on the Wenatchee River or Icicle Creek? If you answered the questions about issues, do you have any management solutions that you would like to suggest?
River user who lives >50 miles away	Floating should be banned down the icicle portion of the river, the fish and wildlife are more important than WAY too many tourists trashing the river and not showing any concern or thought to it being a natural place. They treat more like a ride at Slide waters without thought to safety or the impact they leave. It's gotten out of control and ridiculous
River user who lives >50 miles away	Icicle closure during fall spawn
River user who lives >50 miles away	In the summer the river is too crowded. The recreaters have little respect for the beauty of silence in nature. I wonder if the tubing businesses educate clients about their impact on the river.
River user who lives >50 miles away	It's getting so crowded and I'm worried that the fish habitat and water quality will suffer.
River user who lives >50 miles away	Less permits issued for commercial tubing and rafting. Create well managed and established river access points that do not interfere with regular park recreation access.
River user who lives >50 miles away	Limit the amount of people allowed to rent rafts and other divides during and after salmon spawn ive been a fisherman for years on this river and every year it gets worse with more people on the river and walking the banks during and right after spawning
River user who lives >50 miles away	Now is the time to set the standard and hold people accountable. I think education and holding people accountable for the LAW as well as being stewards of the rivers is really important. While it may seem harsh to limit use or restrict certain types of use - if left unchecked it will only get worse and then it will either be too late or we will lose access period.
River user who lives >50 miles away	Some daily limit on floaters, some cut-off based low water and thus destruction of fish habitat.
River user who lives >50 miles away	The novice public floaters treat the river like a toilet and destroy it with garbage. I feel a permit system would help control the abuse of the area. I put in for permits on a lot of rivers and it's the luck of the draw.
River user who lives >50 miles away	We need better systems to monitor usage on these valuable river sections, both for private and commercial users. I also would love to see no alcohol...it is such a problem (I took my family to the river yesterday and watched a woman become severely intoxicated, remove all of her clothes and proceed to be disruptive, rude and also dangerous as she attempted to swim across the river). I suggest having a fee attached to tube/river rentals and a permit fee that could help fund a river law enforcement crew/river ranger that can help monitor behavior at put ins/take outs and on the river. Tickets for littering, trespassing, public behavior could also go towards funding this.

# Appendix E: Photos 1-26





Photo 1: Icicle Road Bridge River Access. This photo depicts the parking area, portable toilets, vehicle turn around, LOC tent, 2 paths to the river, old bridge abutments, river users preparing to launch and bank erosion. Photo taken August 1, 2020.

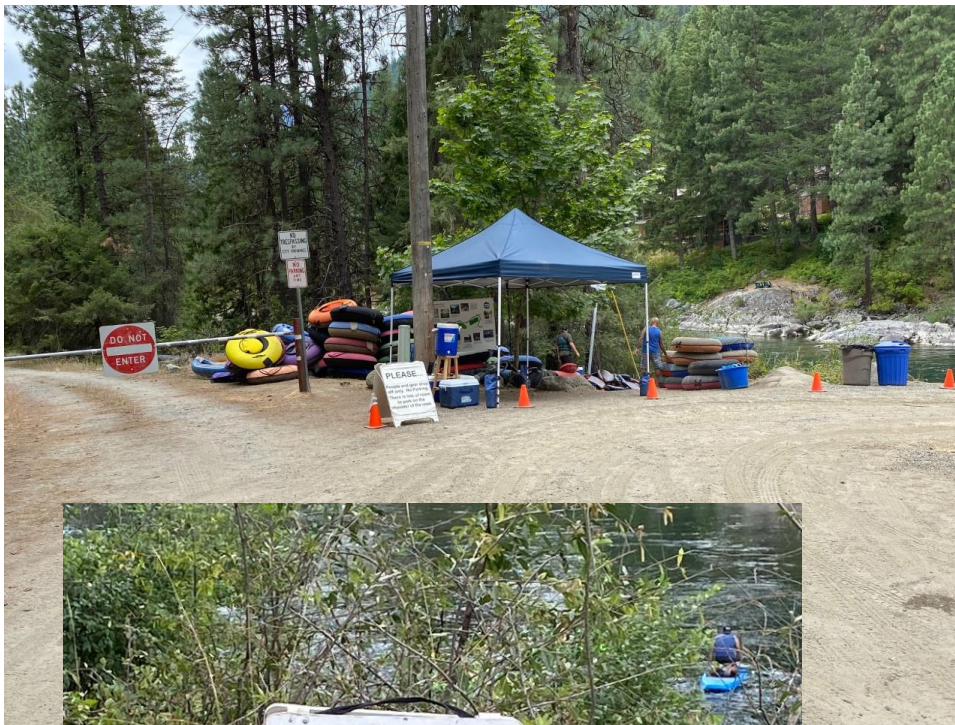


Photo 2: LOC tent near the Icicle road bridge river access. Note their sandwich board signs that direct river users to park in the Icicle road ROW. Photos taken August 1, 2020.



Photo 3: Parking in the Icicle road ROW. Note that when cars are parked in the road shoulder, pedestrians must use the road travel lanes when walking from their cars to the launch site. Photo taken August 1, 2020.



Photo 4 (above): River access from the end of Wilson street.  
Photo taken from the golf course August 1, 2020.



Photo 5 (above): This eroding bank at Enchantment park used to be used for commercial river access.



Photo 6 (left): Beach at Enchantment park that is used for high water commercial river access.

Photo 5 and 6 taken August 21, 2020.

Photo 7 (below): The parking lot at the East Leavenworth road boat launch.

Photo 8 (right): Boat ramp at the East Leavenworth road boat launch.

Both Photos taken August 21, 2020.





Photo 9: The beach at the East Leavenworth road boat launch. Note the rip rap boulder bank at the upstream end and the wood pilings in the river just above the boat ramp. Photo taken August 21, 2020.



Photo 10 (above): The parking lot near the beach and commercial/public take-out just upstream from Barn Beach.

Photo 11 (right): the beach just upstream from Barn Beach. Note the two stop signs to notify river users to exit the river. Also note the rocky bank extending into the river which is a remnant of the historic dam used for logging operations.

Both Photos taken August 24, 2020.

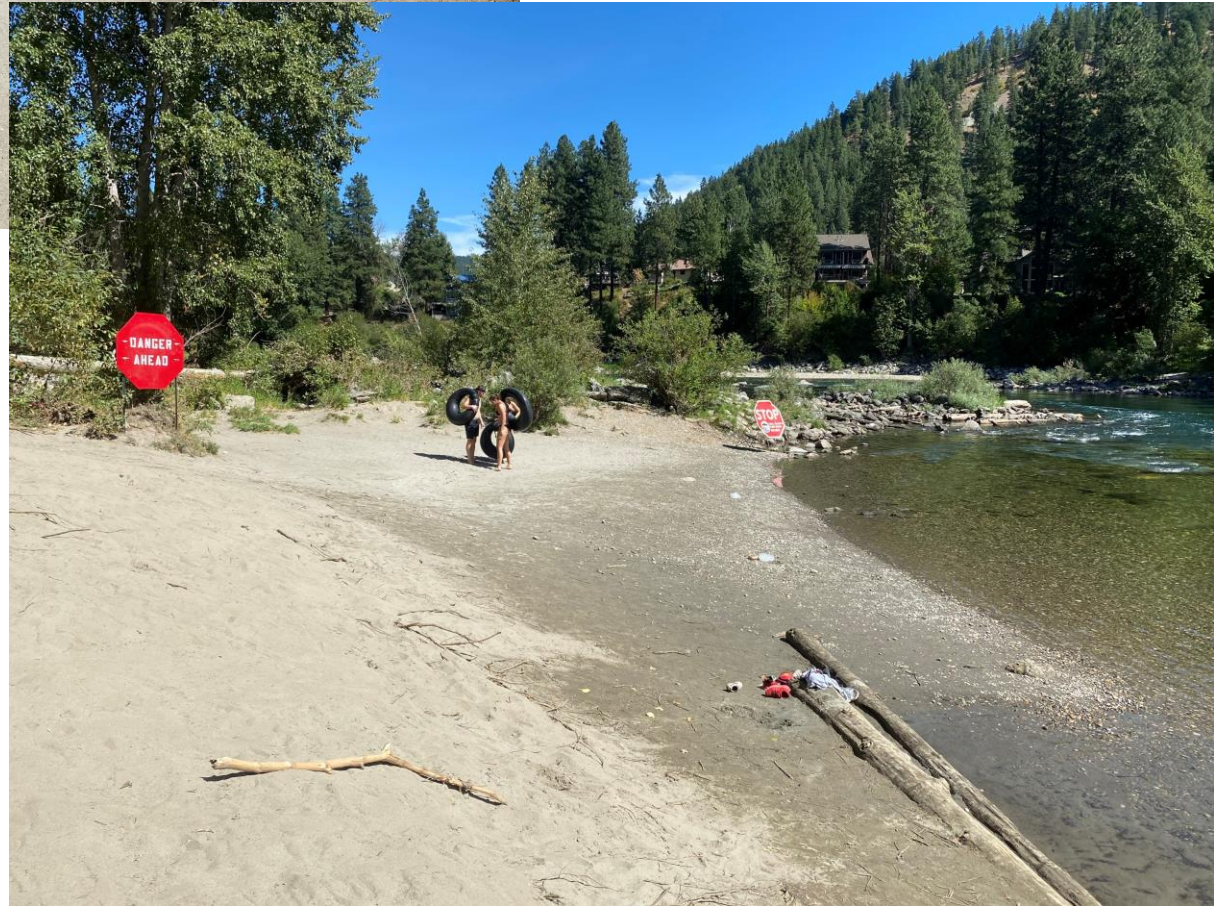




Photo 12 (left): Cars parked in the parking lot near the USFWS boat ramp.

Photo 13 (bottom left): Boat ramp providing access to Icicle creek.

Photo 14 (bottom right): Beach adjacent to the boat ramp on Icicle creek.

All Photos taken July 31, 2020.





Photo 15 (left): County ROW that was formerly Old Bridge Road.

Photo 16 (below): River access near the end of the County road. Note the sand bags and railroad tie steps to facilitate river access on the eroding bank.

Photos taken August 21, 2020.







Photo 17 (left): Footpath that is used for access to Icicle creek near the East Leavenworth road bridge.

Photo 18 (below): Icicle creek banks under the East Leavenworth road bridge.

Photos taken August 21, 2020.



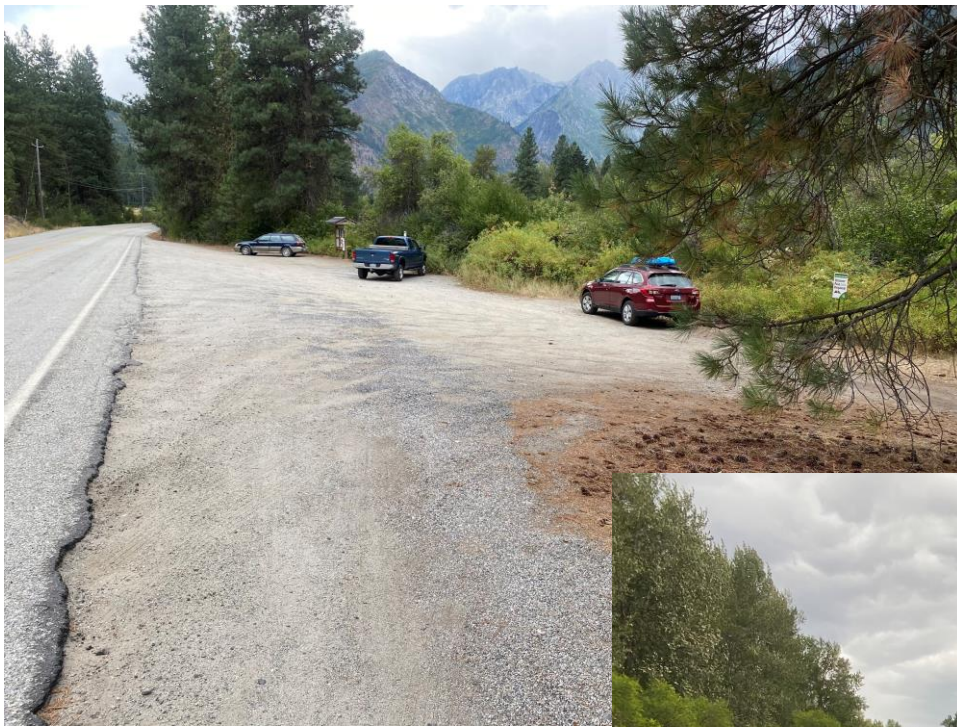


Photo 19 (left): Parking area for the Stump hole WDFW access to Icicle creek from East Leavenworth road.

Photo 20 (below): Icicle creek banks near the Stump hole WDFW river access from East Leavenworth Road. At higher water levels, there is no beach at this site.

Photos taken August 21, 2020.





Photo 21 (left): Parking at the end of Shore street provides access to Icicle creek.

Photo 22 (below): Icicle creek banks near the end of Shore street.

Photos taken August 19, 2020.





Photo 23. Icicle Creek near the LOC launch site at the end of the former Old Bridge Road crossing. July 18, 2021



Photo 24. River users on Icicle Creek just north of the E. Leavenworth bridge. July 31, 2021



Photo 25. Above. River users on Icicle Creek near the end of Shore Street. August 19, 2021



Photo 26. Right. River users on the Wenatchee river. Photo taken from river left near the upstream end of the golf course. The launch site at the end of Wilson Street is at the downstream end of the photo. August 8, 2021

# Appendix F: December 2020 Community Meeting Notes

## **Leavenworth River Recreation Survey Public Presentation**

**December 9, 2020 6pm**

Participants:

Sharon Waters, Carolyn Wilson, Mike Kaputa, Marty Fallon, Will Henson, Troy Campbell, Kirvil Skinnarland, Sharon Lunz, Mara Bohman, Colin Forsyth, Tina Rieman, Bob Bugert, Bruce Williams (bwseattle@gmail.com), Alan Hunt, Marty Fallon ([martyfallon@gmail.com](mailto:martyfallon@gmail.com)), Gro Buer, Jesse Boyd, Ana Cortez, Julia Pinnix, Pat Thirlby, Jim Holland ([jimholland0@gmail.com](mailto:jimholland0@gmail.com)), Chris Clark, Zeke Reister, Lisi Ott, Dave Johnson, Robes Parrish, Ingrid Backstrom, Bob Stroup, Duane Goehner, Bob Fallon, Jane Lee, Barbara Rossing, Pete Tiegen, Erin McKay, Jennifer Hadersberger

### **Breakout Room Report-Out**

#### **Room 1:**

Missing from report was big picture goal.

Data surprise: commercial tubing ended up being less than the 50% originally stated.

Key finding: most people want to limit the number of tubers and that environmental concerns were highest priority. More research needed on water quality, and how to balance allowing use of resources while balancing impacts. Sunscreen could be harmful, State of Hawaii has banned harmful sunscreens. We could make safe sunscreen available.

How can we find a way to reduce overall impact?

Safety a concern.

#### **Room 2:**

Question of whether Covid impacted numbers, but not a big concern because the trend shows very high usage. Stump hole gets higher use later in the summer when hatchery is closed. Requires Discover Pass so could enforce regs there.

Surprise that environmental concerns were the highest priority.

Next steps: more info needed on all management actions. What are the actual laws that could be enforced? Need a clear list of existing laws. Need more info on impacts on water quality and clarity on salmon use. This is concrete data that we should be able obtain (Julia Pinnix chimed in saying that the data does not currently exist).

#### **Room 3:**

**Photos of number of people on the river.**

Data surprise: number of commercial vs. private (questions of accuracy).

Recommendations: enforcement of existing laws (alcohol, trespass). Is there a way to regulate the amount of commercial use?

**Room 4:**

Trend in use seems to be going up rapidly in recent years. Some sort of permit system may be a good solution, but then you may have an issue with displacement and trespass as people enter river at different points to avoid permit. Use has increased so rapidly that we are behind the curve on addressing issue.

**Room 5:**

Alcohol use and public behavior is the obvious problem- perhaps having a 'river monitor' at put in could discourage bad behavior.

Where would funding and support come from for increased enforcement.

Rapid increase in use mirrors rapid increase in short term rentals.

The experience becomes less quality with more people, and where is that line? Has it already been passed?

Sheriff's office has already said they will not be able to address this issue. What are alternative solutions?

**Room 6:**

Outreach and education can go a long way before law enforcement has to get actively involved.

Quality of experience has gone down for locals because of the crowds.

Lottery system could be a consideration like it is on other rivers. Questions of whether we reviewed what other areas are doing to address river use issues. Could be informative to research similar situations and see what has worked.