



# Nason Ridge Stewardship Group Quarterly Meeting January 23, 2025

## Topics:

Potential 6910-112 Snopark

Shared Road Stewardship Updates

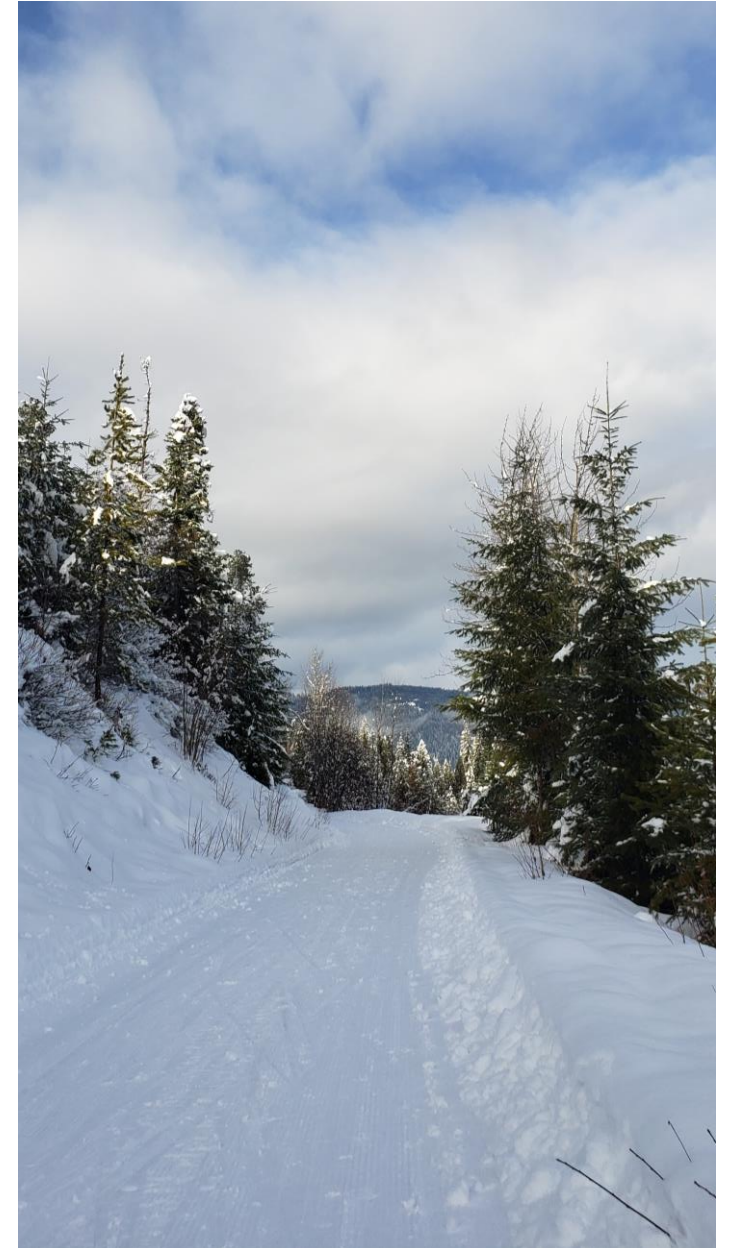
Grant Updates

Kahler Creek Restoration Update

Forest Health Updates

# 6910-112 Snopark Discussion

- Hear from State Parks about non-motorized snopark idea
- Pros and Cons of operating a snopark on the west side of property
- Road plowing/maintenance considerations
- Safety of accessing from Hwy 2
- Timeline for WA State Parks Winter Recreation Program application



# Title II 6910 Shared Stewardship Grant

- Proposal submitted in fall 2024 with support from USFS staff, based on feedback from local residents at past Stewardship group meetings
- \$30,000 in Title II funding approved for maintenance/improvements on 6910
- Proposed improvements include grading and gravel in priority areas
- 20% match required - \$7,500 from Stewardship fund for additional maintenance/improvements
- Chelan County will work with USFS and local residents to hone in priority actions and implement improvements in 2025



FS 6910

6910-112

New Gate

6920-112

Second Gate

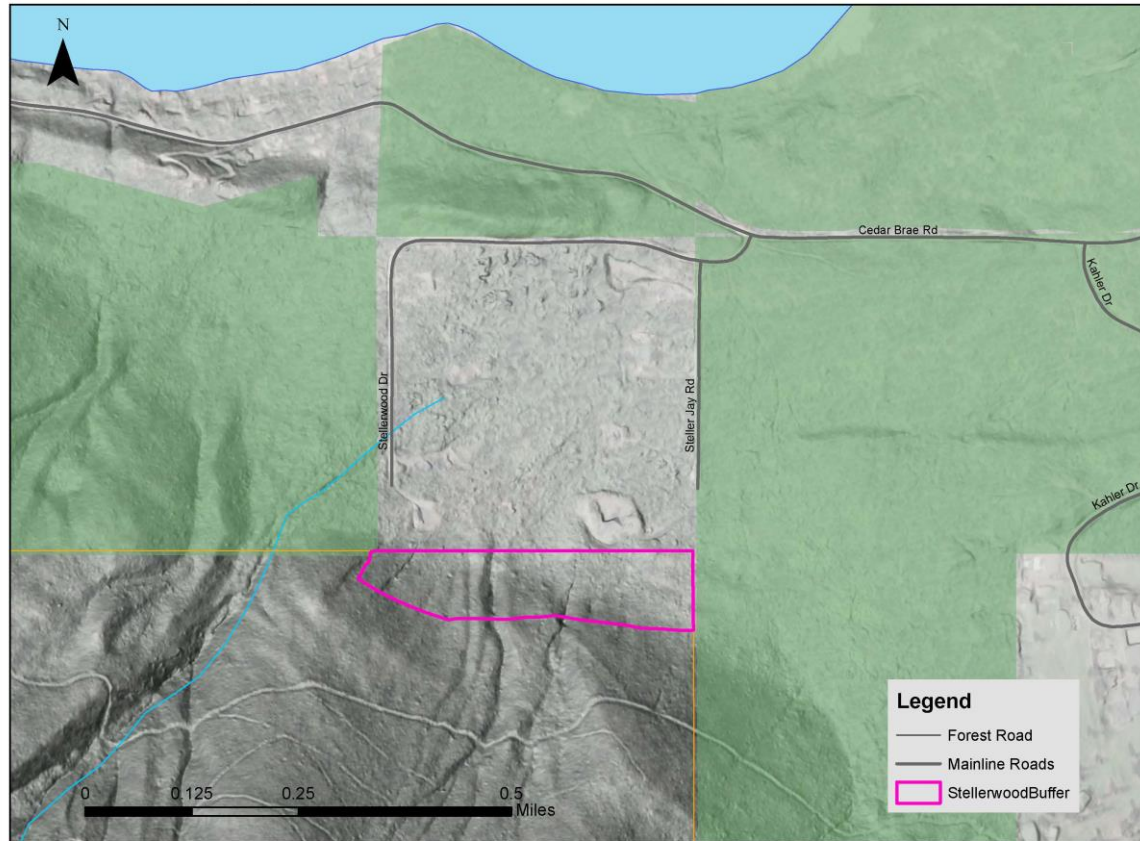
US Hwy 2

Google Earth

# Community Forest Fuels Reduction Projects

- Stellerwood wildfire risk reduction buffer complete
- Ridgetop PCT fuel break thinning planned for 2025 with NRCS funding

Stellerwood Community Buffer



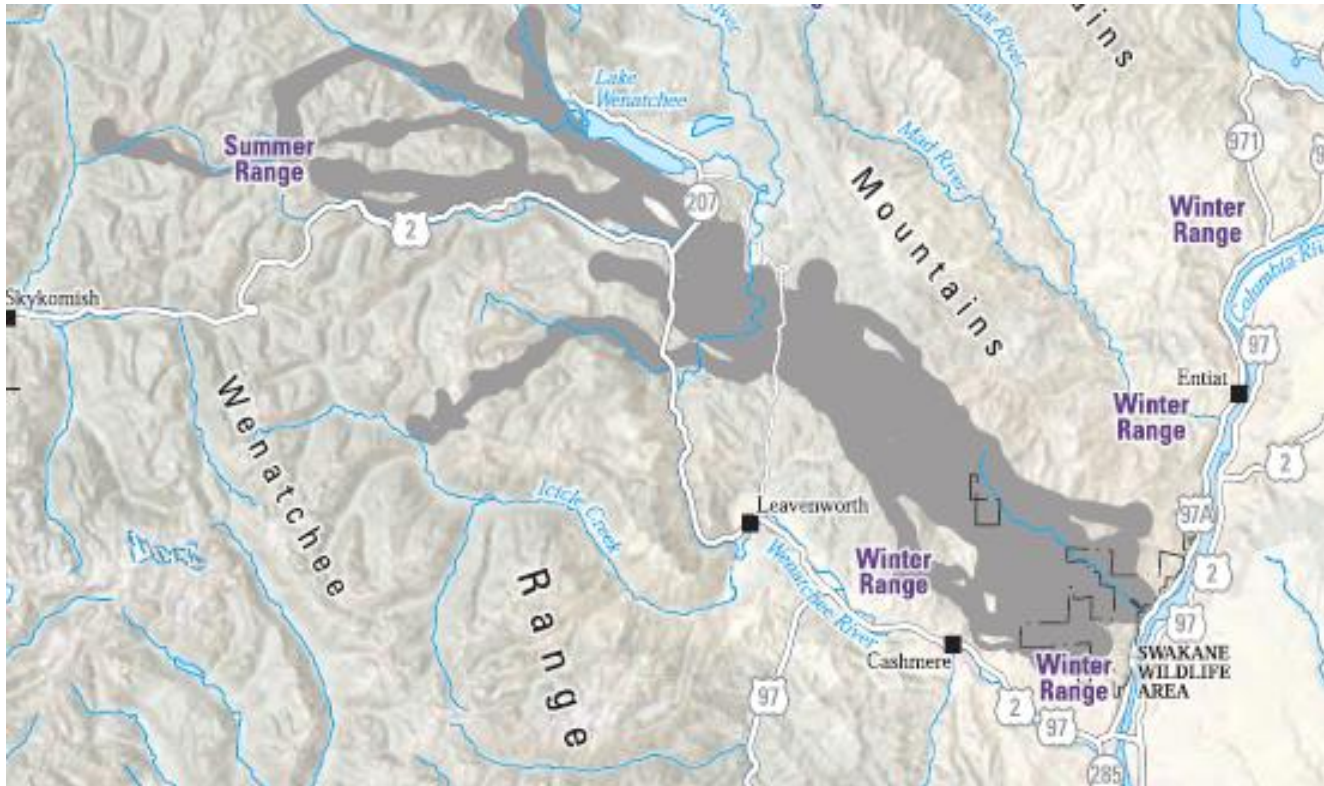
# Nasonview Thinning Project





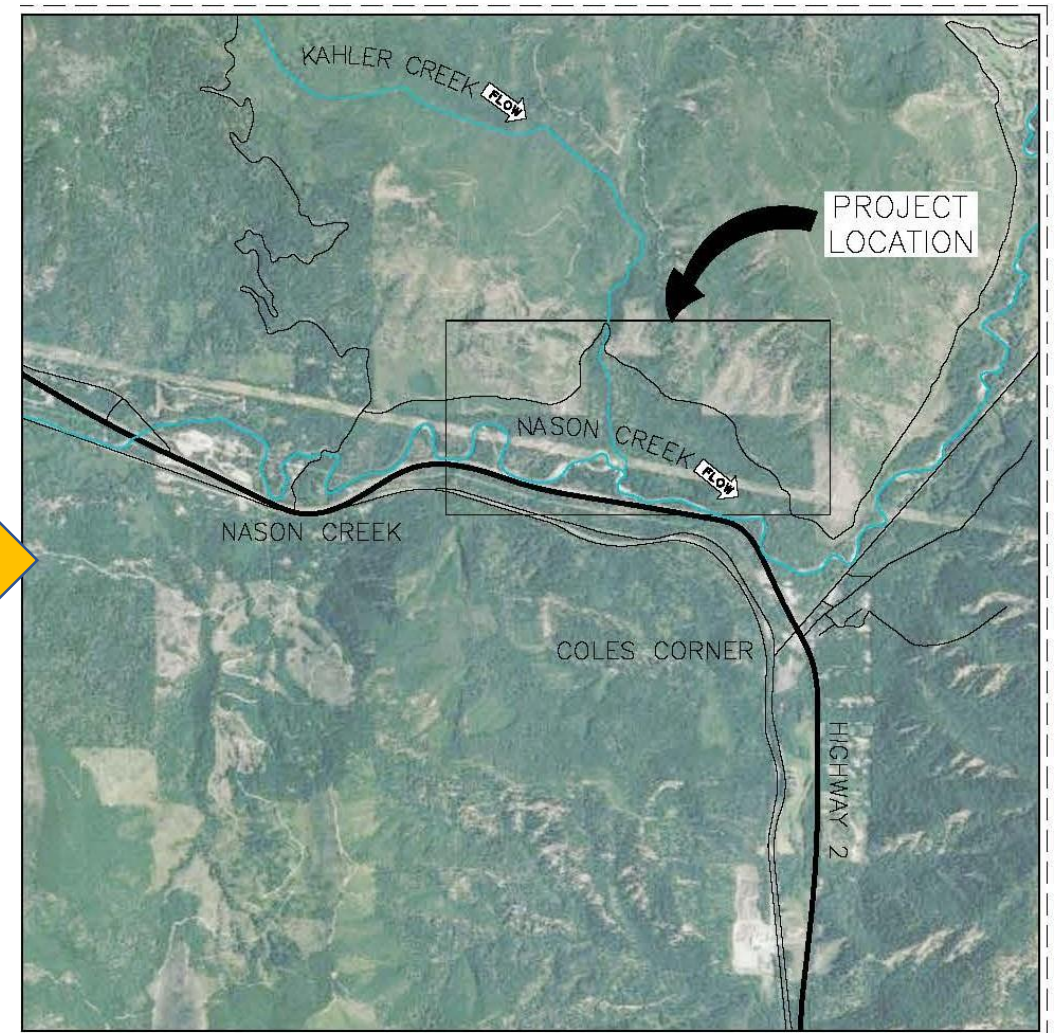
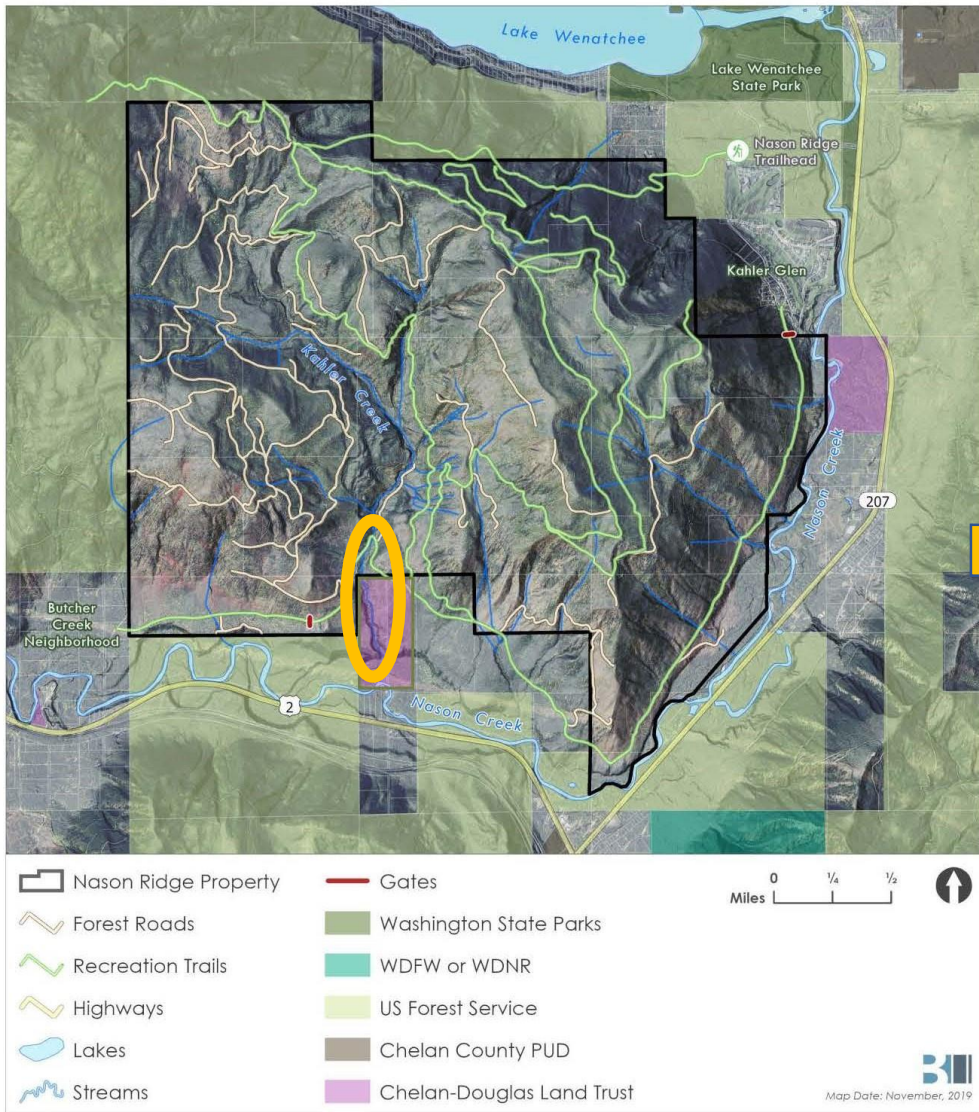
# Wildlife Corridor Thinning Project Proposal

- National Fish and Wildlife Foundation grant proposal, matched by DNR Forest Resilience funds for ~125 acres of habitat improvement/forest health thinning
- Reduce brush competition in migration and stopover corridors
- Promote forage species and resilient trees





# Kahler Creek



**VICINITY MAP**  
SCALE: 1" = 2,000'

# Kahler Creek – Restoration Solution

- Alluvial Water Storage (AWS)
  - Installed wood debris structures
  - Aggrade sediment
  - Retain surface water
  - Reconnect the stream to its floodplain
  - Force groundwater exchange



*Alluvial Water Storage on Poison Creek*

# Landscape Scale Forest Health Updates

- Community Wildfire Defense Grant
- Upper Wenatchee Forest Resilience Bond
- Nason NEPA on hold

# Nason Ridge Recreation and Access Objectives

- Provide access to enjoy open space and recreation opportunity.
- Continue to increase opportunities for non-motorized recreation such as hiking, skiing, biking, and snowshoeing.
- Increase opportunity for both summer and winter recreation.
- Provide recreation and education opportunity for children and underserved communities.
- Provide quality hunting opportunities.

The management goal for recreation is to work with community members, recreational interests, and neighboring landowners to address the recreation objectives in a manner that integrates with forest management and aquatic/ecosystem health.

## Short-term Management Activities (1-10 Years)

- Implement a community planning effort to develop a Recreation Element of the Nason Ridge Community Forest Management Plan that defines pathways from existing conditions to desired future opportunities.
- Address parking and access issues at existing gates and trailheads. As two of the access points are near private residential properties (Kahler and Butcher Creek gates) sensitivity toward landowners and sustainability of access recommendations are paramount and will necessitate inclusion of these landowners in decision-making.
- Continue existing Winter Recreation Program trail grooming.

## Long-term Management Activities (11-20 Years)

- Identify funding for implementation and maintenance of desired improvements in recreation access and opportunity.
- Maintain partnerships with adjacent landowners to continue/improve recreation connections across the landscape.
- Assess and adaptively manage impacts of recreation on adjacent landowners and wildlife/aquatic resources.

<p><b>Nason Ridge Trailhead (USFS)</b></p> <p><b>Landowner: USFS</b></p>	<p><b>Desirable short-term option for increasing summer access. Work with USFS on potential for trailhead expansion. Expansion would require coordinated NEPA. Not a desired winter access point.</b></p> <p><b>Level of Use/Facilities: Toilet improvement. Additional signage about Community Forest.</b></p> <p><b>Monitor use and consider expansion if use increases due to Community Forest. Plan ahead with USFS as process can take years.</b></p>
<p><b>Kahler Glen</b></p> <p><b>Landowner: Kahler Glen Community Association</b></p>	<p><b>Maintain current use of winter snopark, work with Kahler/State Parks on signage, do not develop summer access points through Kahler Glen (but work with residents on trail maintenance needs)</b></p>
<p><b>Butcher Creek Road/6910</b></p> <p><b>Landowner: USFS, Chelan County, Private</b></p>	<p><b>Priority for short-term access improvement</b></p> <p><b>Work with WSDOT on potential safety improvements</b></p> <p><b>Look into FLAP grant for Butcher Creek road improvement</b></p> <p><b>Determine new gate location and parking area near tree island/spur road</b></p> <p><b>Work with residents on signage</b></p> <p><b>Determine level of use desired</b></p> <p><b>Potential winter sno-park. Work with State Parks to determine feasibility of winter access point/plowing etc.</b></p> <p><b>Level of Use/Facilities: Toilet. Signage about Community Forest. Small parking area.</b></p>