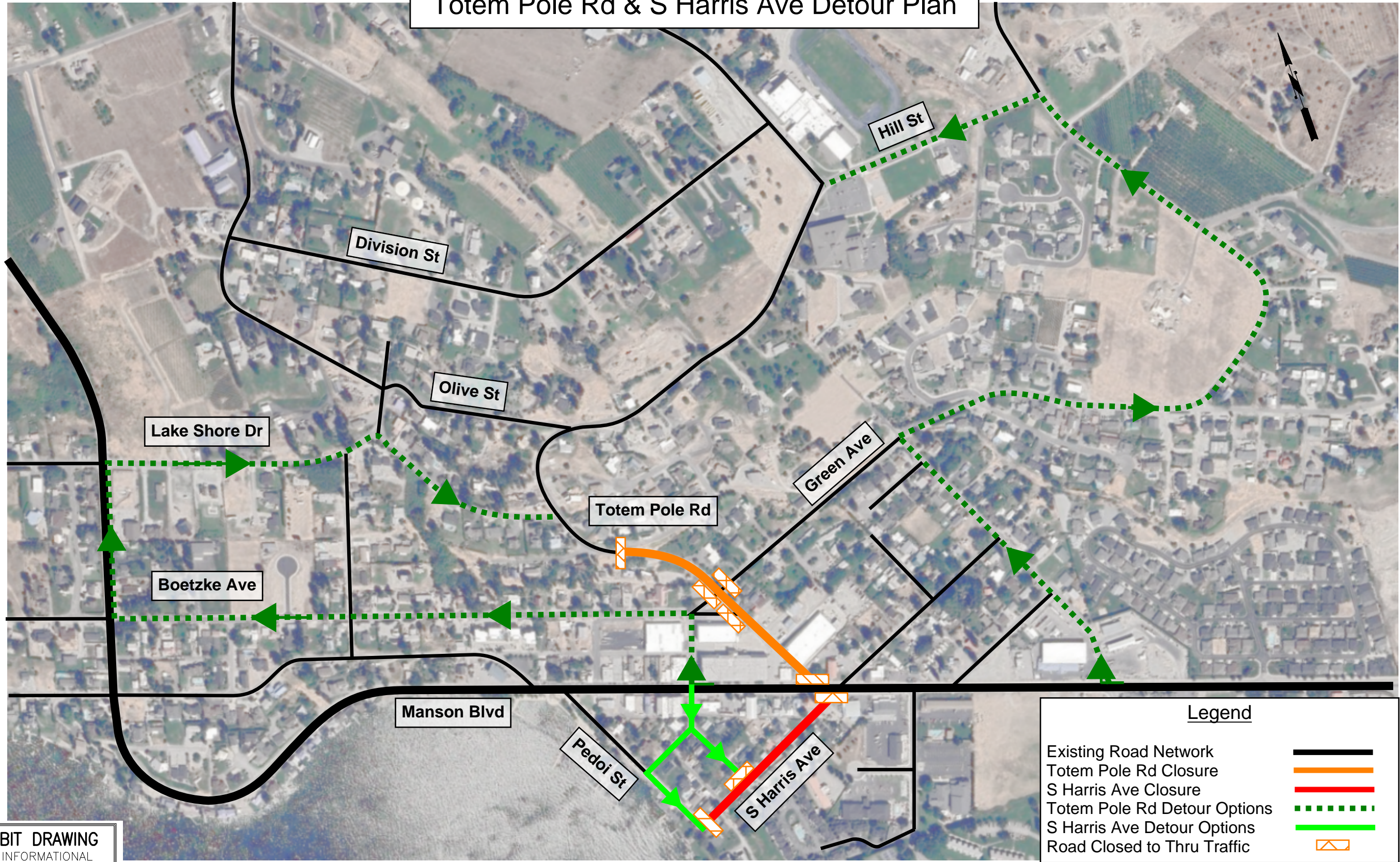


Totem Pole Rd & S Harris Ave Detour Plan



Legend

- Existing Road Network
- Totem Pole Rd Closure
- S Harris Ave Closure
- Totem Pole Rd Detour Options
- S Harris Ave Detour Options
- Road Closed to Thru Traffic

EXHIBIT DRAWING
FOR INFORMATIONAL
PURPOSES ONLY

NOT TO SCALE

No.	Date	Revision	By	Appr.

PERTEET
125 OHME GARDEN ROAD, SUITE 8
WENATCHEE, WA 98801
800.615.9900



811
Know what's below.
Call before you dig.

CRP #650
Project Number 20220011

CHELAN COUNTY
TOTEM POLE ROAD
DETOUR PLAN

Drawing No. **DT1**
Sheet No. ---
of Total